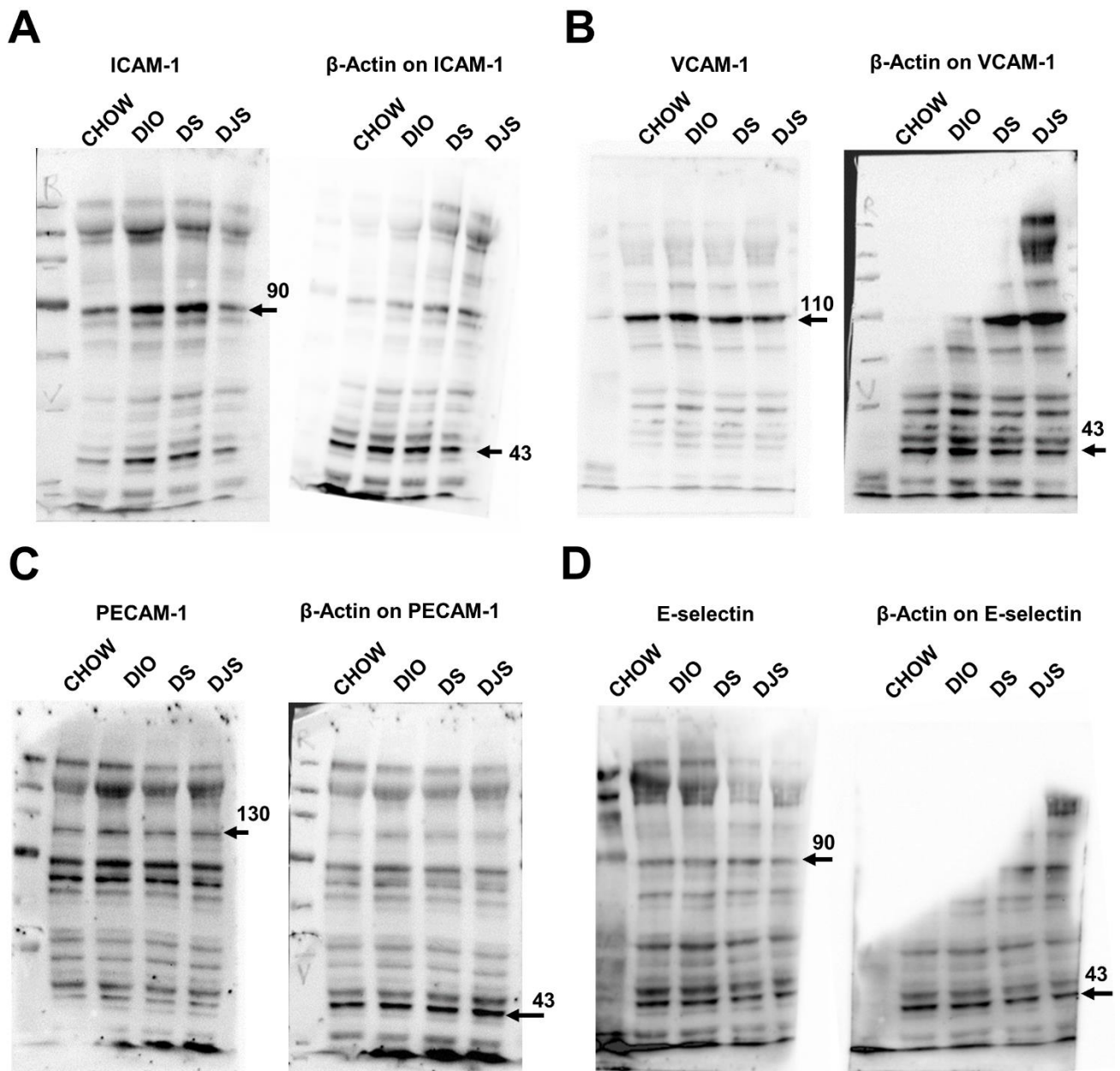
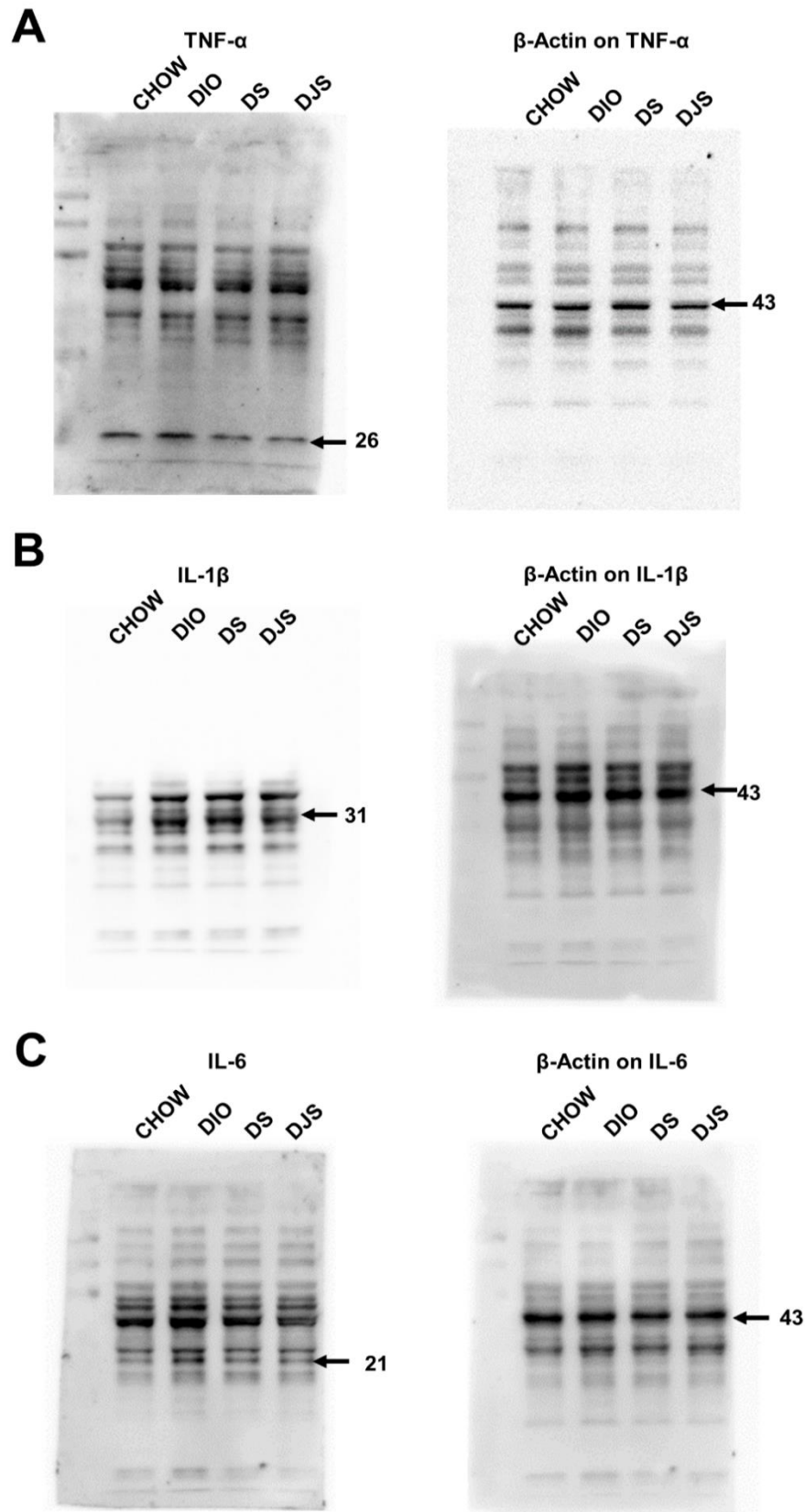


Supplementary Figure S1. Full-length WB images for figures 3 and 4: oxyblot (A), 4-Hydroxynonenal (4-HNE) (B), caspase-3 (C) and nuclear factor kappa-light-chain-enhancer of activated B cells subunit p50 (NF-κB p50) (D). All the WB were normalized to β-actin. Molecular weight of proteins in kilodaltons is indicated by the arrow at right. CHOW rats, fed with standard diet; DIO rats, fed with high-fat diet; DS, DIO rats supplemented with tart cherry seeds; DJS, DS rats supplemented with tart cherry juice.



Supplementary Figure S2. Full-length WB images for figure 5: intracellular adhesion molecule-1 (ICAM-1) (A), vascular cell adhesion molecule-1 (VCAM-1) (B), platelet endothelial cell adhesion molecule-1 (PECAM-1) (C) and E-selectin (D). All the WB were normalized to β -actin. Molecular weight of proteins in kilodaltons is indicated by the arrow at right. CHOW rats, fed with standard diet; DIO rats, fed with high-fat diet; DS, DIO rats supplemented with tart cherry seeds; DJS, DS rats supplemented with tart cherry juice.



Supplementary Figure S3. Full-length WB images for figure 7: tumor necrosis factor- α (TNF- α) (A), interleukin-1 β (IL-1 β) (B) and interleukin-6 (IL-6) (C). All the WB were normalized to β -actin. Molecular weight of proteins in kilodaltons is indicated by the arrow at right. CHOW rats, fed with standard diet; DIO rats, fed with high-fat diet; DS, DIO rats supplemented with tart cherry seeds; DJS, DS rats supplemented with tart cherry juice.