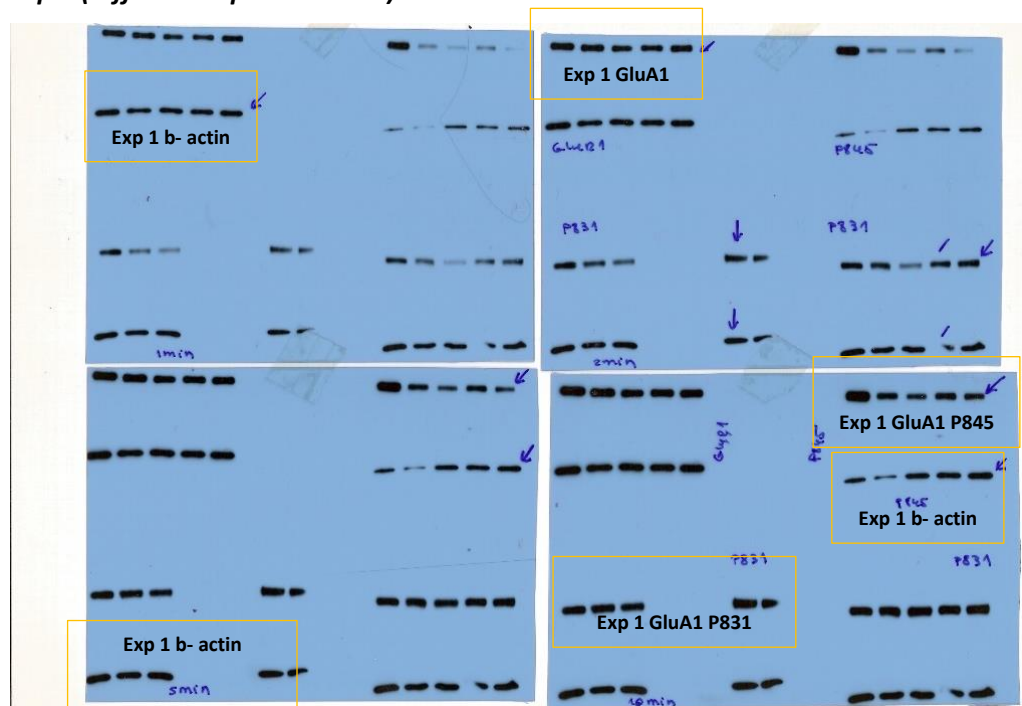
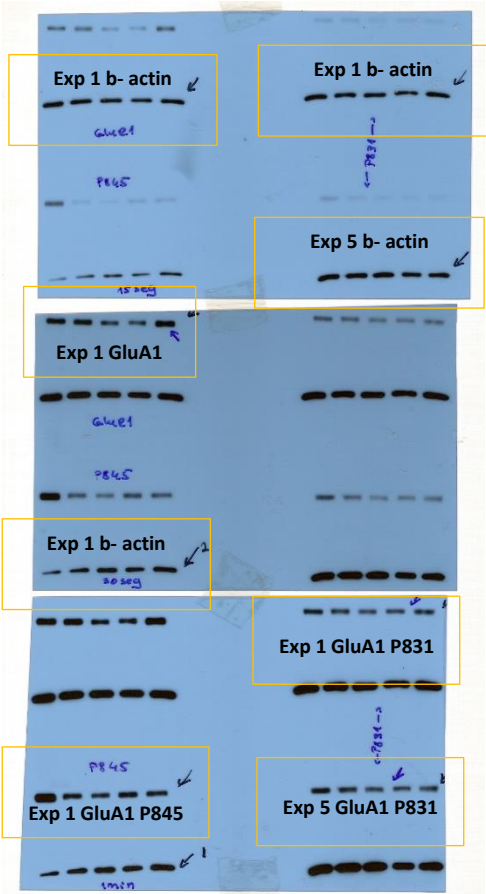


Supplementary file S1 - Western blots GluA1 – order of samples is membranes from: *control slices (C)*, *VPAC1 antagonist (PG)*, *theta-burst (T)*, and *VPAC1 antagonist + theta-burst (PG+T)*, except where otherwise indicated. Due to incomplete records in some experiments, we can no longer identify the exposure times used for analysis. Experiments were developed on film thus MW markers are not visible. Different experiments are outlined in yellow.

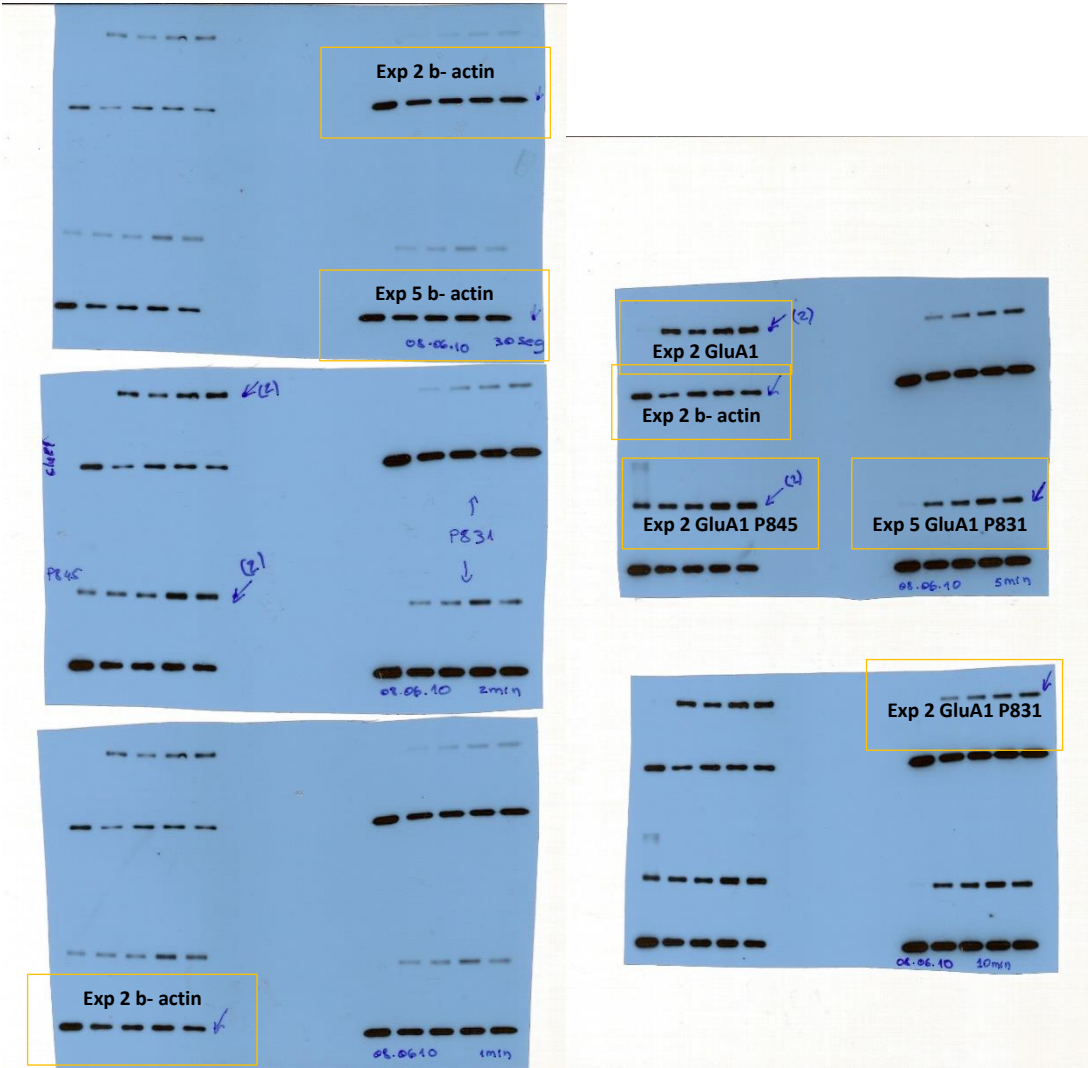
Exp 1 (different exposure times)



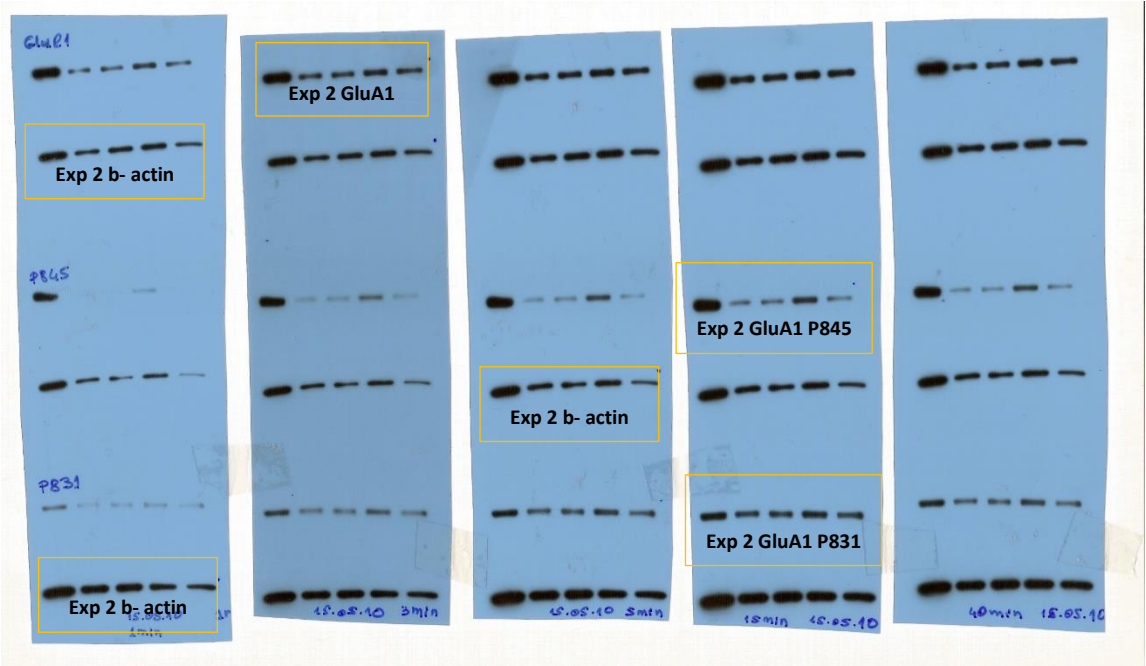
Exp 1 and 5 (different exposure times)



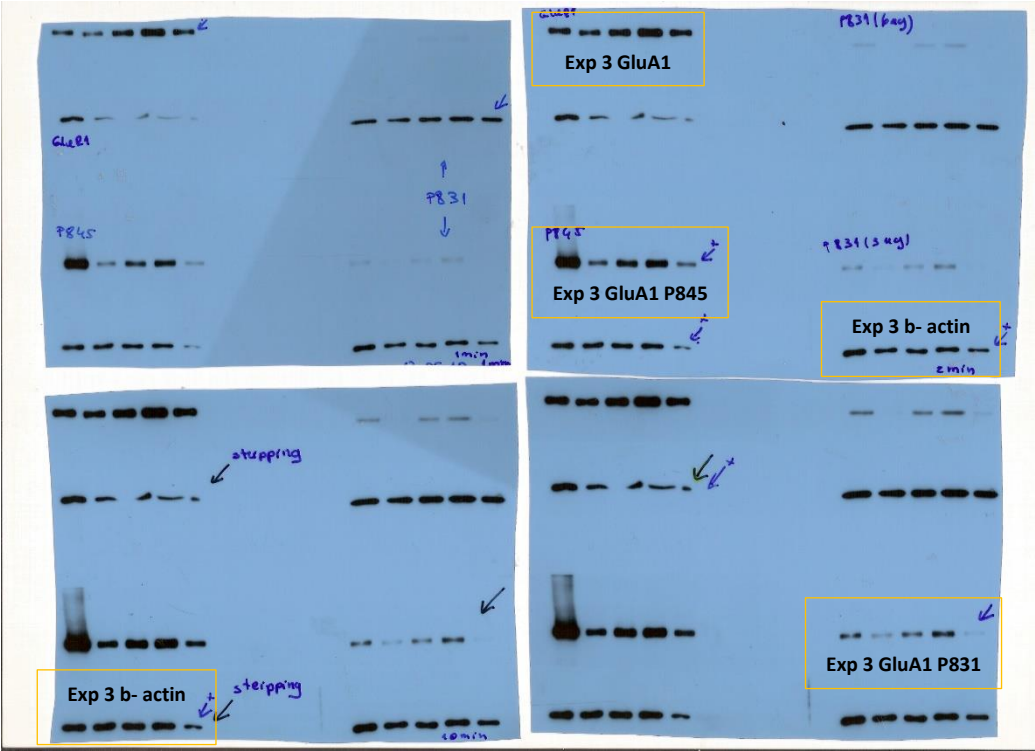
Exp 2 and 5 (different exposure times)



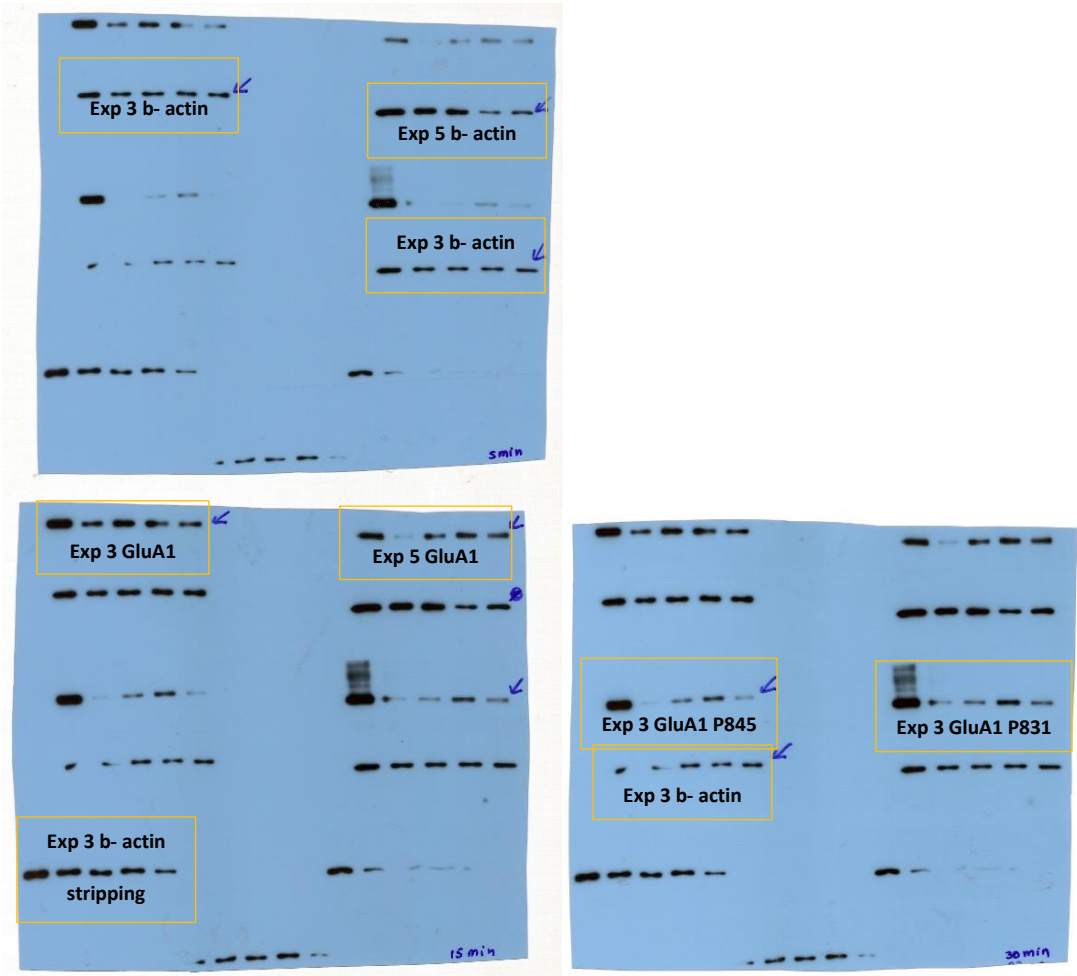
Exp 2 (different exposure times)



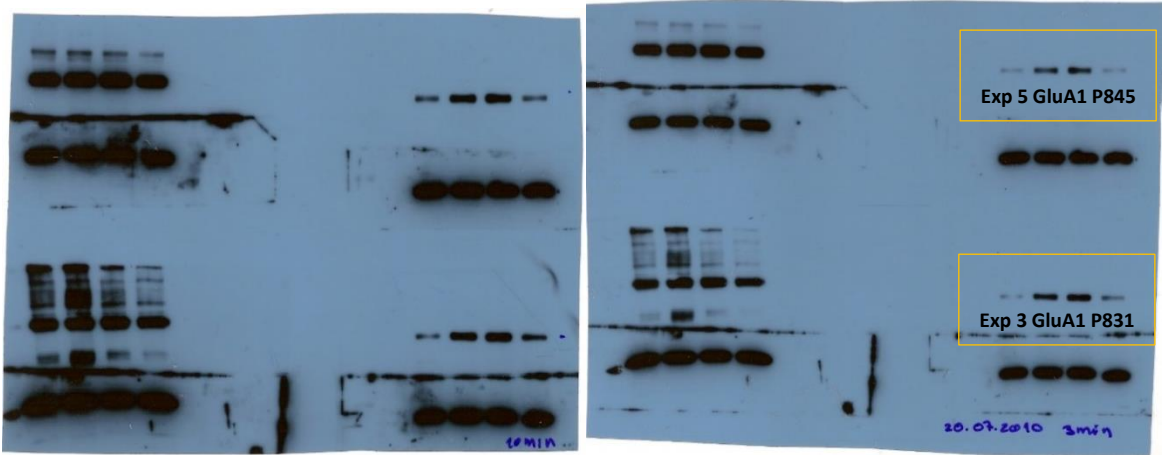
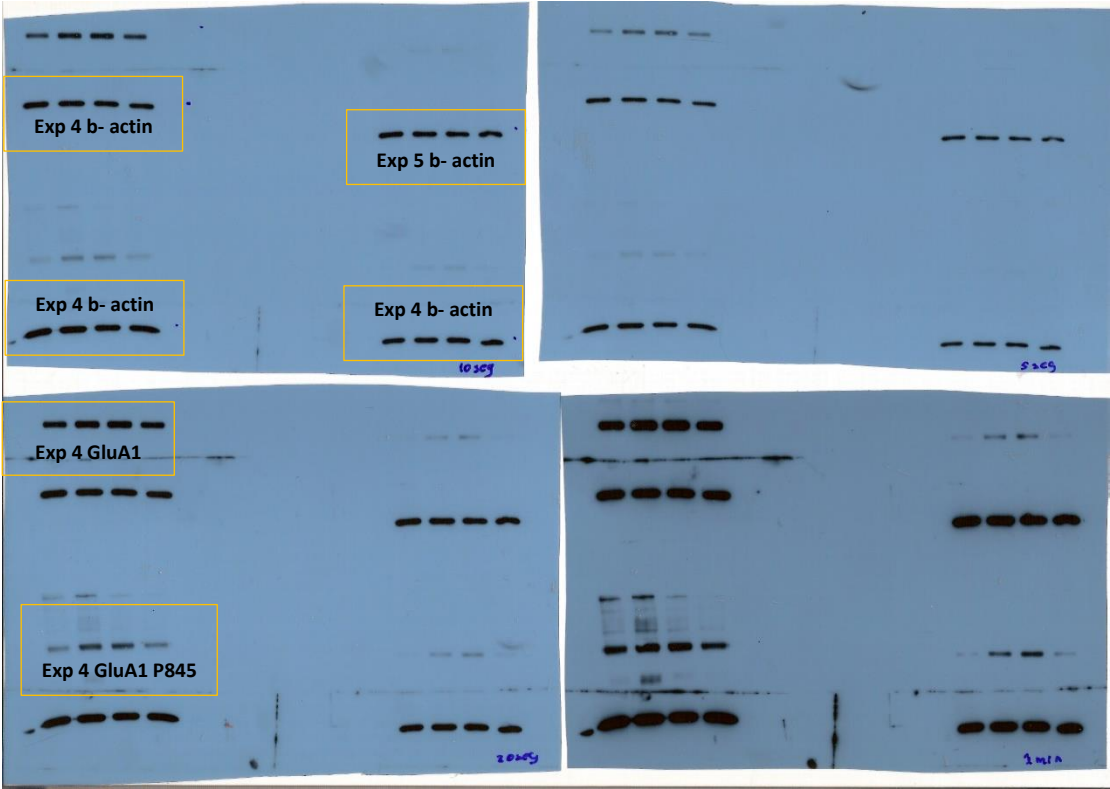
Exp 3 (different exposure times)



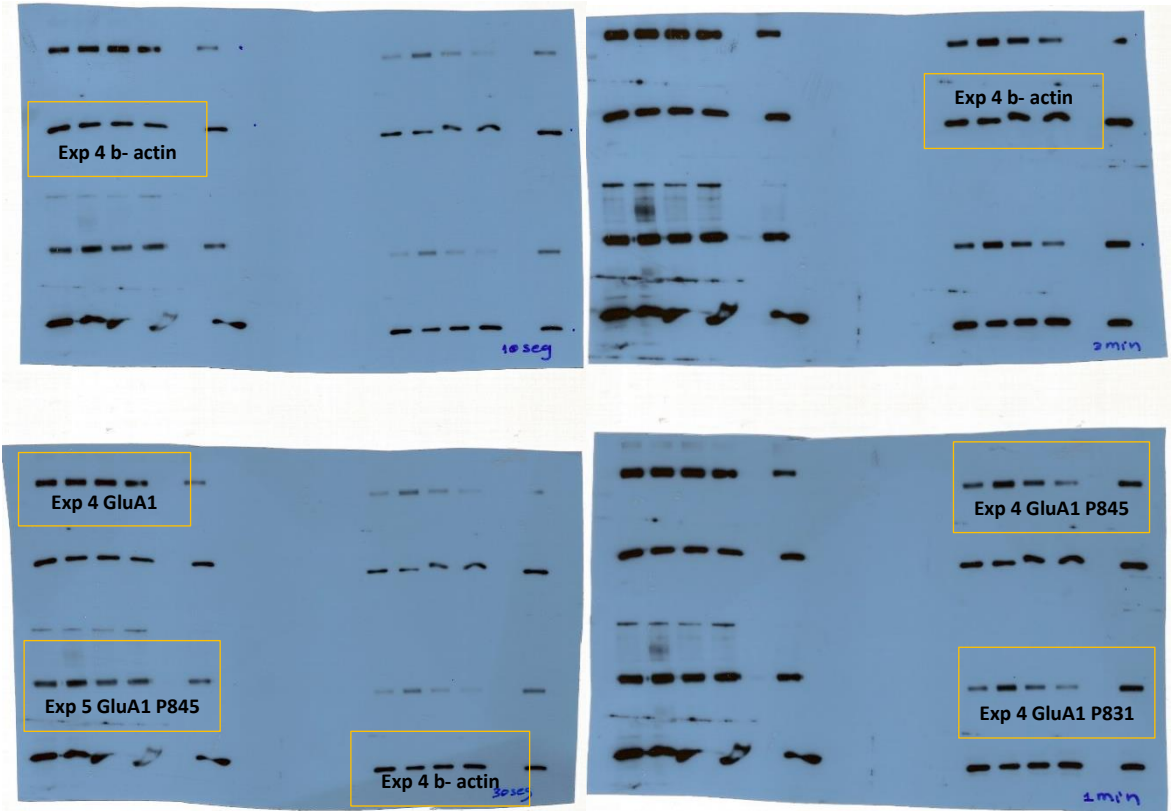
Exp 3 and 5 (different exposure times)



Exp 4 and 5 (different exposure times)



Exp 4 and 5 (different exposure times)



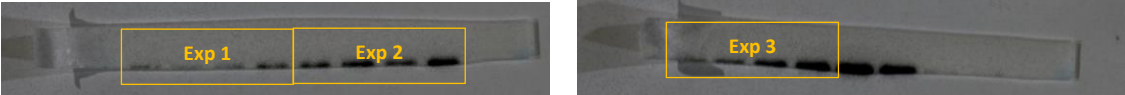
Supplementary file S2 - Western blots CaMKII – order of samples is membranes from: *control slices (C)*, *theta-burst (T)*, *VPAC1 antagonist (PG)*, and *VPAC1 antagonist + theta-burst (PG+T)*, except where otherwise indicated. Different experiments are outlined in yellow.

CaMKII PThr286

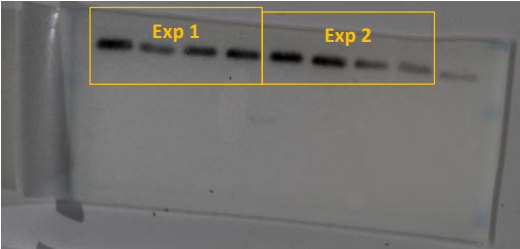


Obs: No staining on lower membrane when probed for CaMKII/CaMKII PThr286

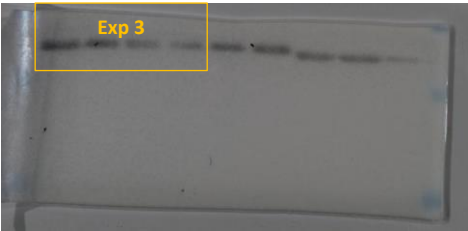
CaMKII (stripping)



beta-actin M1



beta-actin M2

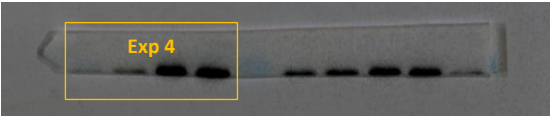


CaMKII PThr286



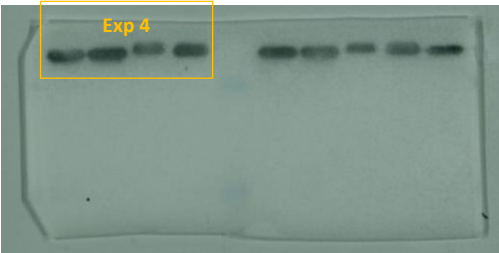
reversed order

CaMKII (stripping)

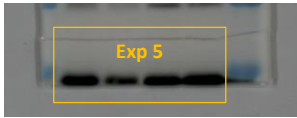


reversed order

beta-actin



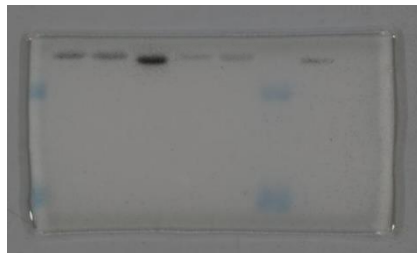
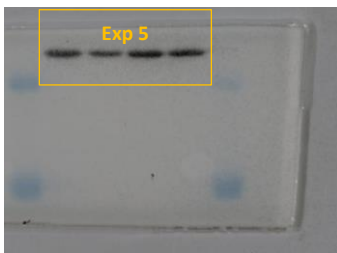
CaMKII PThr286



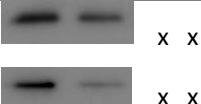
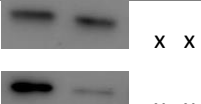
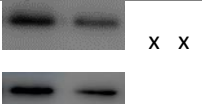

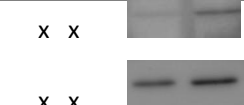

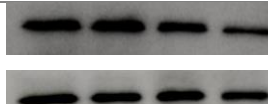
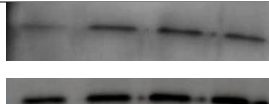
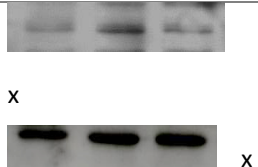
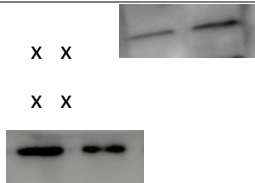
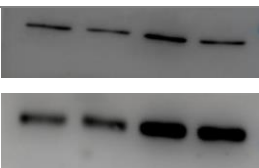


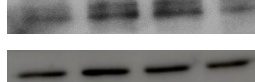
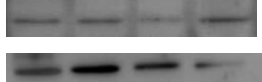
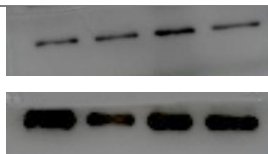

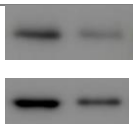
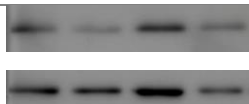
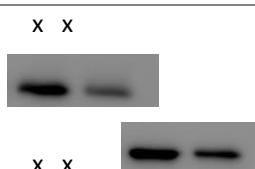
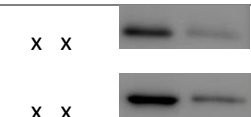
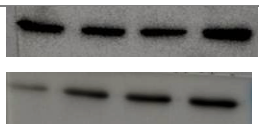

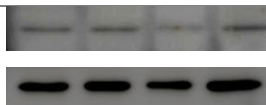
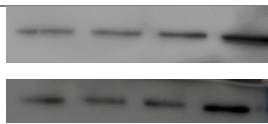
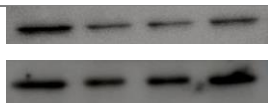
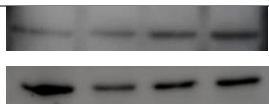
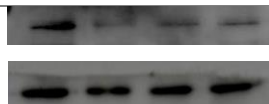
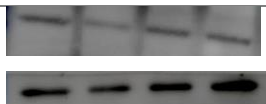
CaMKII (stripping)



beta-actin

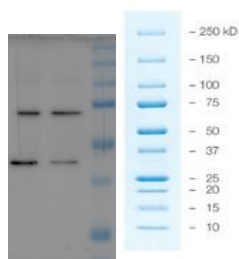
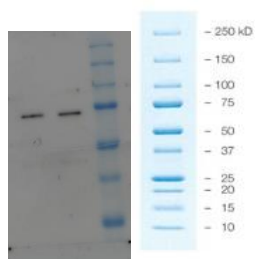


Supplementary file S3 - Western blots Kv4.2 – order of samples is membranes from: *control slices (C)*, *theta-burst (T)*, *VPAC1 antagonist (PG)*, and *VPAC1 antagonist + theta-burst (PG+T)*, except where otherwise indicated. Different experiments are organized in a table.

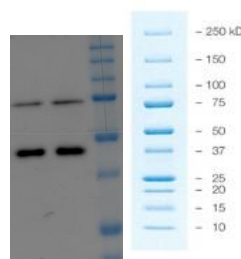
Experiment	Kv <i>β-actin</i>	PSer438 <i>β-actin</i>	P Thr602 <i>β-actin</i>	P Thr607 <i>β-actin</i>
Exp1 – 08-11-2017 Order C and T				x
Exp1 – 04-12-2017			x	
Exp1 – 14-12-2017				
Exp 1 - 29-11-2018 Order C PG T and PG+T		x		x
Exp2 – 30-11-2017 and 06-12-2017		x		
Exp2 – 14-11-2018 -> Order C PG T and PG+T			x	x
Exp 3 – 23-11-2017				
Exp3 – 11-12-2017			x	
Exp4 – 06-12-2017		x	x	x
Exp5 – 13-12-2017				

Optimization:

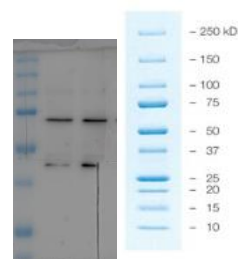
NOTE: images do not always have the MW marker in the immediate next lanes, i. e., samples from other projects were run in the same gel and were not included to avoid confusion.



Lower half cut beta-actin



Lower half cut beta-actin



Lower half cut beta-actin