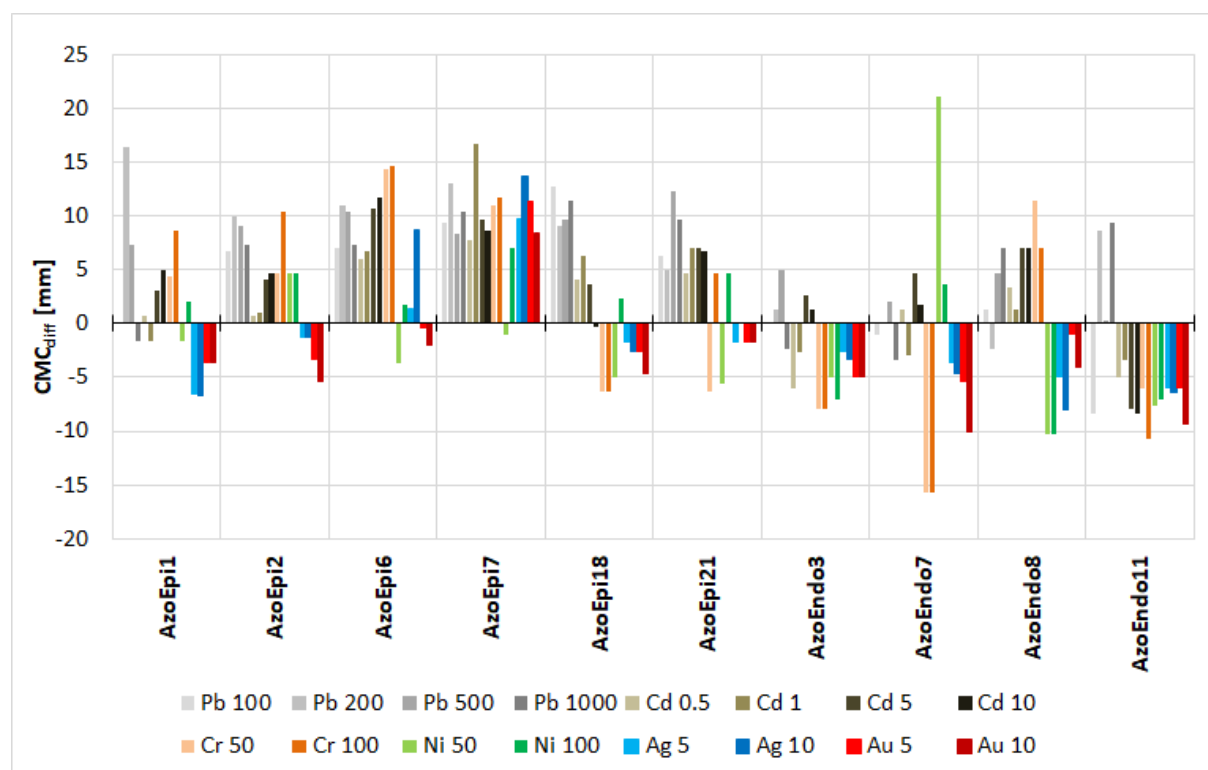


Supplementary Figure S1. Effect of the metals applied in the specified range of doses (in mg L<sup>-1</sup>) on the cellulolytic activities of the selected strains expressed as differences in the size of halos (in mm) vs. the untreated control. Positive values of bars - stimulation of the activity; negative values of bars - inhibition of the activity. See Table 1 for strain codes.



Supplementary Figure S2. Effect of the metals applied in the specified range of doses (in  $\text{mg L}^{-1}$ ) on the xylanolytic activities of the selected strains expressed as differences in the size of halos (in mm) vs. the untreated control. Positive values of bars - stimulation of the activity; negative values of bars - inhibition of the activity. See Table 1 for strain codes.

