

Supplementary Materials

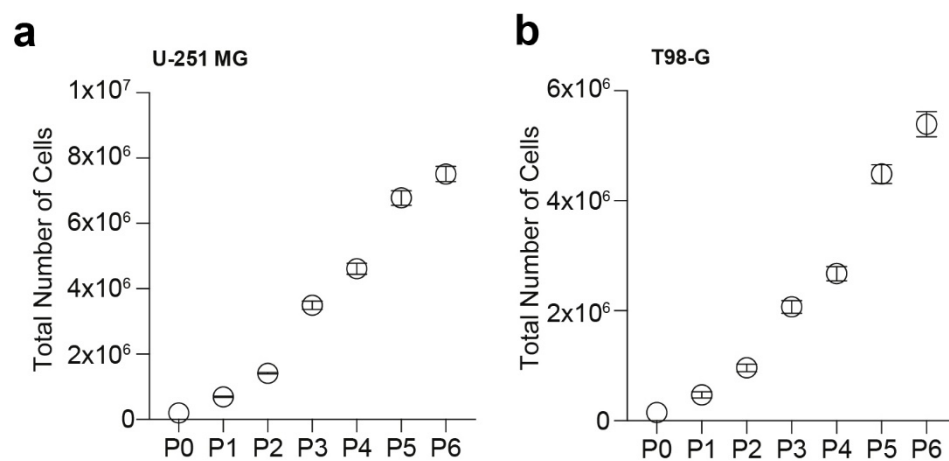


Figure S1. Growth curves. (a,b) Growth curve over six passages of human U251-MG (a) and T98-G (b) cell lines. Data are mean \pm SEM of $n = 3$ independent cultures. P: passage.

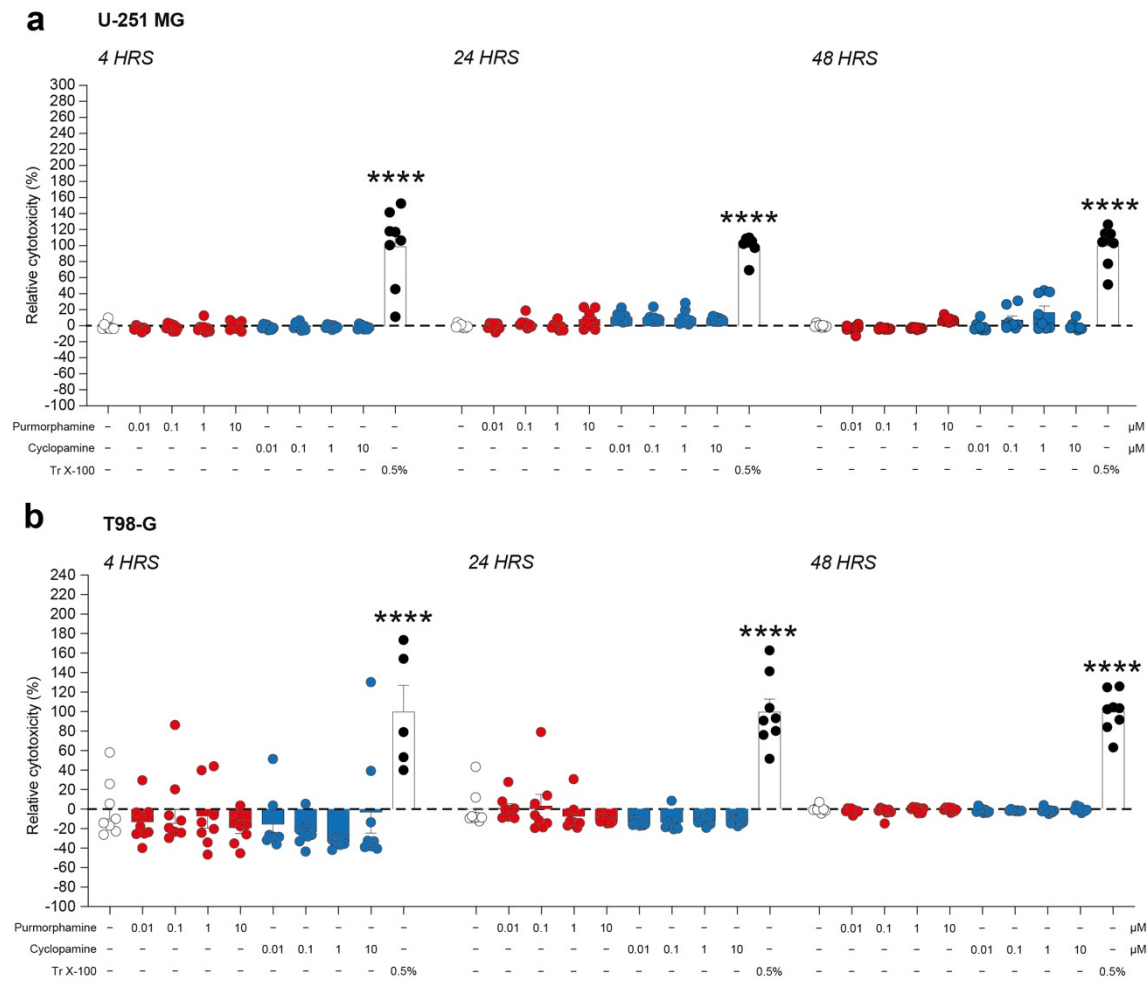


Figure S2. Cytotoxicity assay. **(a,b)** Cytotoxicity assay of positive and negative controls of human U251-MG **(a)**, and T98-G **(b)** cell lines and cultures exposed to increasing concentration of purmorphamine and cyclopamine (0.01–10 μ M). Data are mean \pm SEM of $n = 3$ independent experiments; **** p -value < 0.0001 versus control; one-way ANOVA with Holm–Šidák post-hoc test. Tr X-100: Triton X-100.

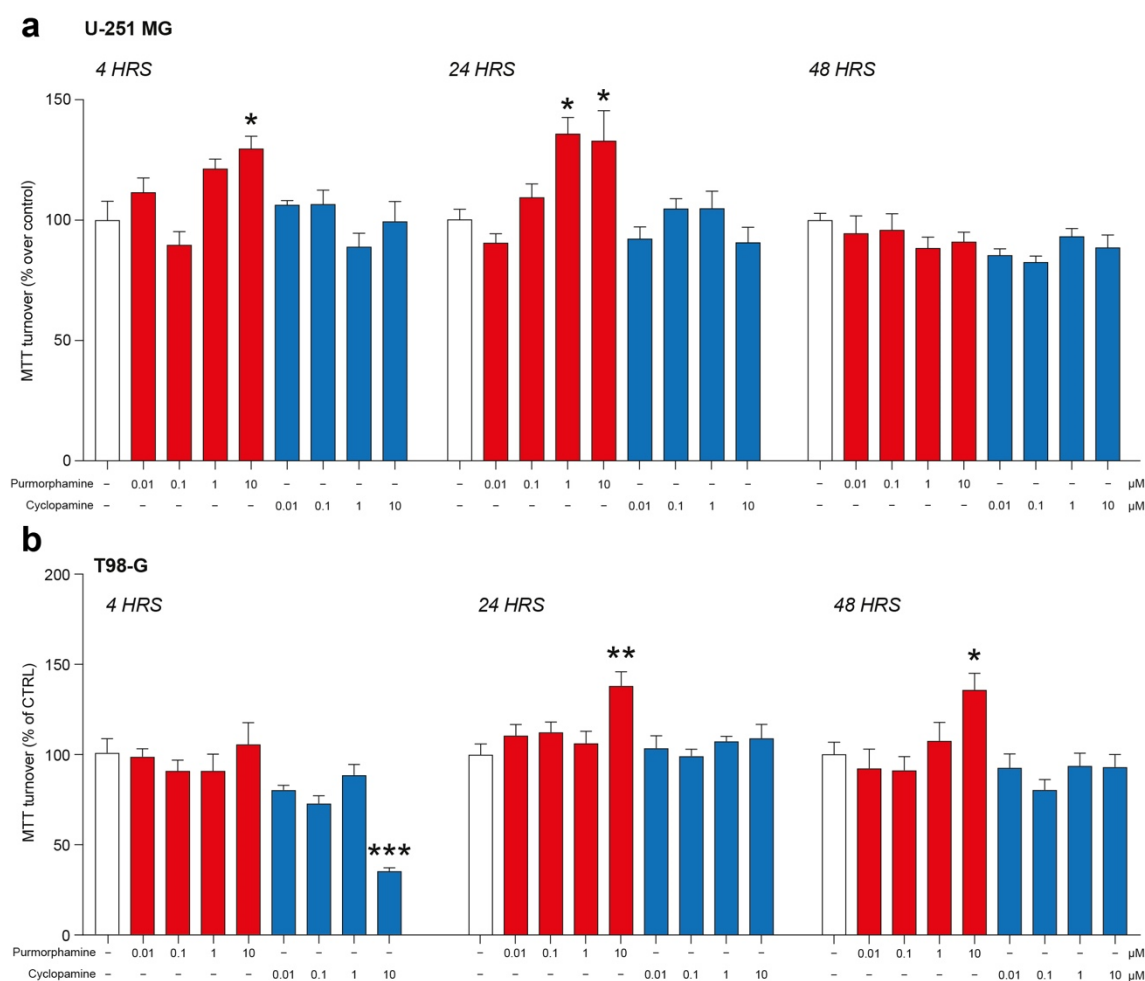


Figure S3. MTT turnover assay. (a-b) 3-(4,5-dimethylthiazol-2-yl)-2,5-diphenyltetrazolium bromide (MTT) turnover of control human U251-MG (a) and T98-G (b) cell lines and cultures exposed to increasing concentration of purmorphamine and cyclopamine (0.01–10 μM). Data are mean \pm SEM of $n = 3$ independent experiments; *p-value < 0.05, **p-value < 0.01 and ***p-value < 0.001 versus control; one-way ANOVA with Holm–Šidák post-hoc test.

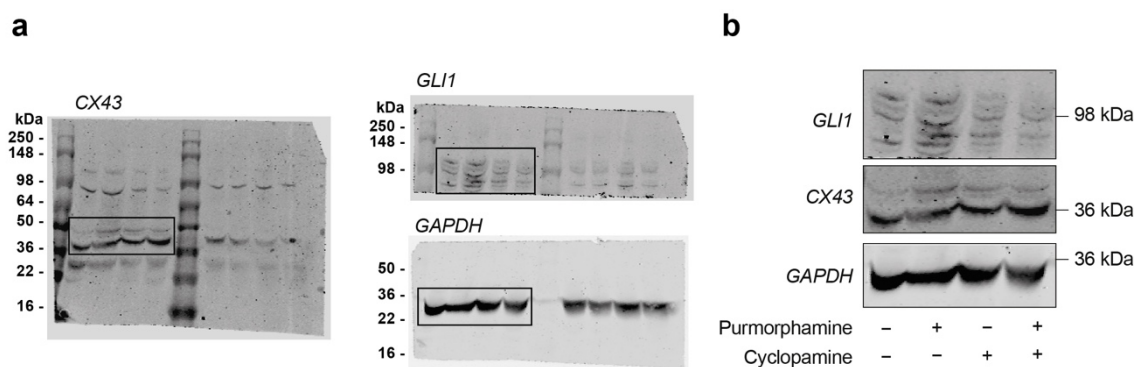


Figure S4. Whole Western blot showing all bands. **(a)** Uncropped membranes for CX43, GLI1 and GAPDH. **(b)** Cropped membranes showed in Figure 2c.