

# Study of the Adhesion of the Human Gut Microbiota on Electrospun Structures

Francesco Biagini <sup>1,2</sup>, Marco Calvigioni <sup>3</sup>, Carmelo De Maria <sup>1,2</sup>, Chiara Magliaro <sup>1,2</sup>, Francesca Montemurro <sup>1</sup>, Diletta Mazzantini <sup>3</sup>, Francesco Celandroni <sup>3</sup>, Monica Mattioli-Belmonte <sup>4</sup>, Emilia Ghelardi <sup>3</sup> and Giovanni Vozzi <sup>1,2,\*</sup>

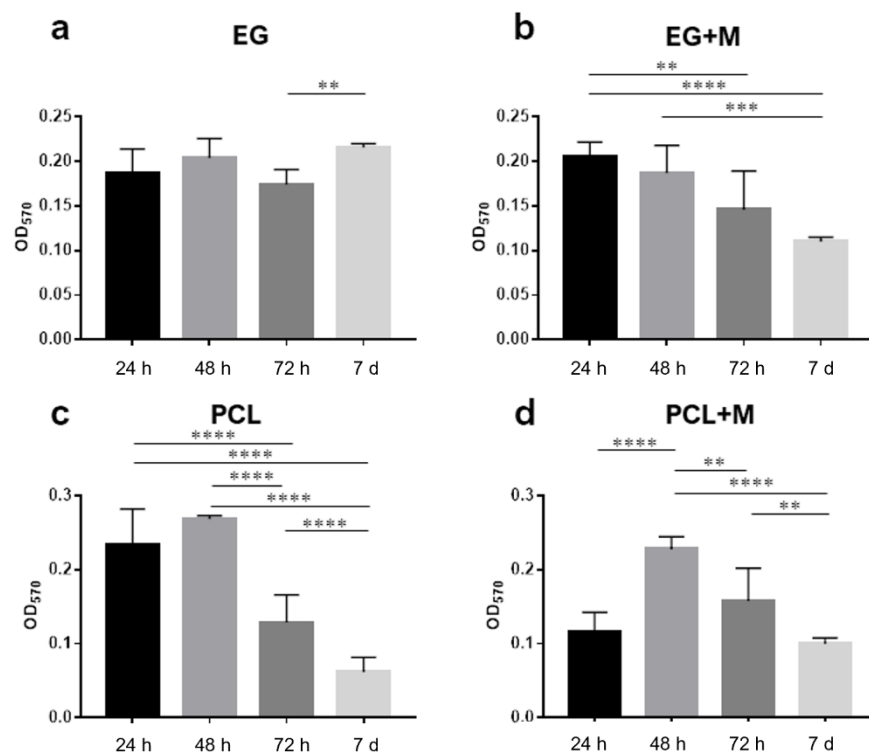
<sup>1</sup> Research Center “E. Piaggio” - University of Pisa, Largo Lucio Lazzarino 1, 55122, Pisa, Italy; francesco.biagini@phd.unipi.it (F.B.); carmelo.demaria@unipi.it (C.D.M.); chiara.magliaro@centropiaggio.unipi.it (C.M.); francesca.montemurro@unipi.it (F.M.)

<sup>2</sup> Department of Information Engineering - University of Pisa, Via G. Caruso 16, 56122, Pisa, Italy

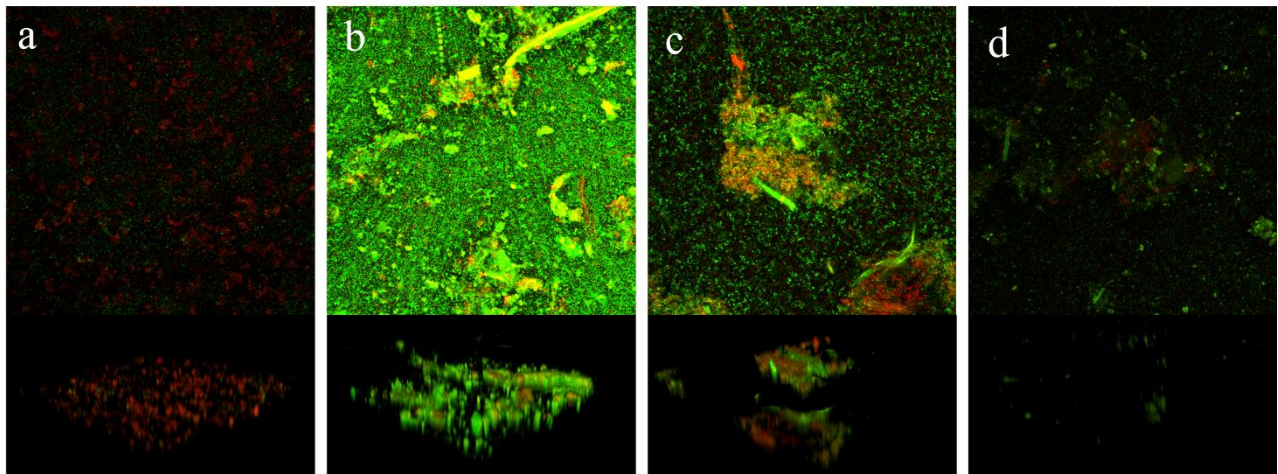
<sup>3</sup> Department of Translational Research and New Technologies in Medicine and Surgery - University of Pisa, Via San Zeno 37, 56127 Pisa, Italy; marco.calvigioni@med.unipi.it (M.C.); diletta.mazzantini@med.unipi.it (D.M.); francesco.celandroni@dps.unipi.it (F.C.); emilia.ghelardi@med.unipi.it (E.G.)

<sup>4</sup> Department of Clinical and Molecular Science - DISCLIMO Università Politecnica delle Marche, Via Tronto 10/A, 60126, Ancona, Italy; m.mattioli@staff.univpm.it

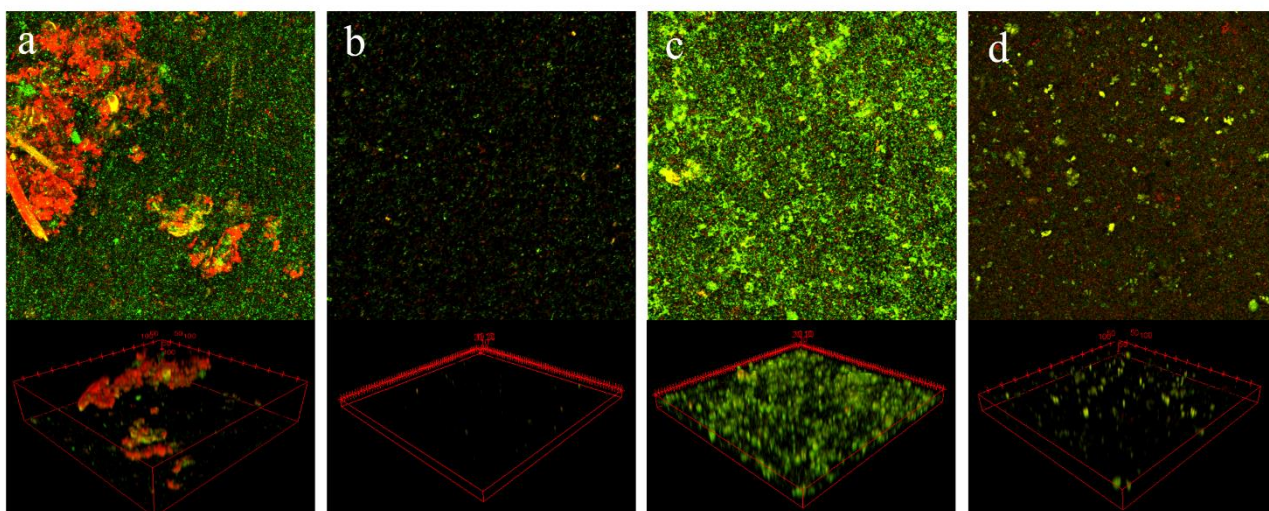
\* Correspondence: g.vozzi@ing.unipi.it



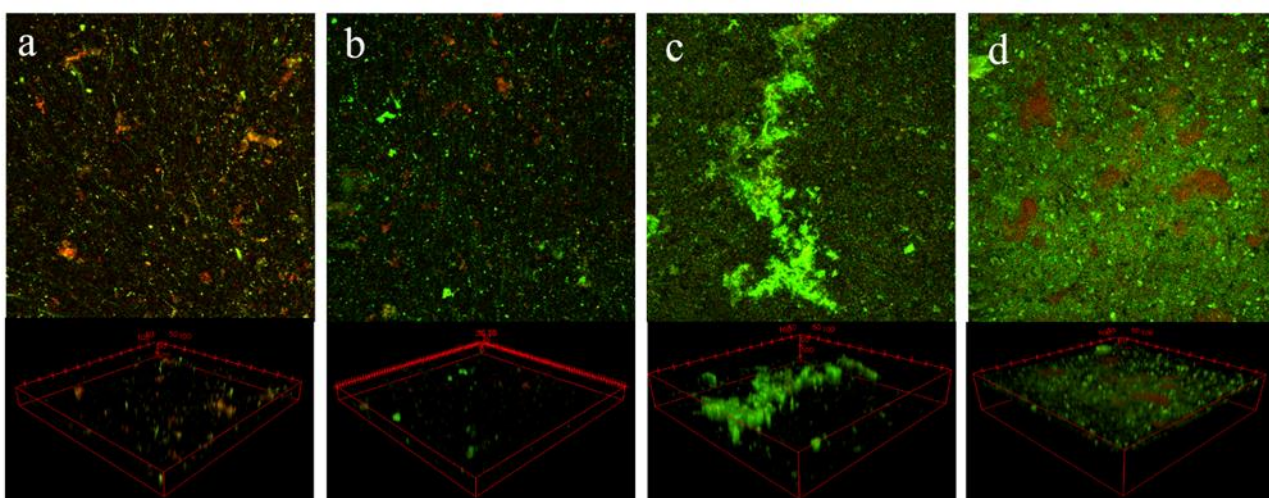
**Figure S1.** Analysis of the microbial biofilm formation using crystal violet quantification of the fecal microbiota for (a) EG, (b) EG+M, (c) PCL, and (d) PCL+M at different time points (electrospun gelatin structures, EG; electrospun PCL structures, PCL; electrospun gelatin structures with mucins, EG+M; electrospun PCL structures with mucins, PCL+M). \*  $p < 0.05$ , \*\*  $p < 0.01$ , \*\*\*  $p < 0.001$ , \*\*\*\*  $p < 0.0001$ .



**Figure S2.** Live (green)/dead (red) imaging of the fecal microbiota cultured on the electrospun structures at 24 hours (z-stack images and 3D reconstruction). **(a)** Electrospun gelatin structure; **(b)** electrospun gelatin structure with mucin; **(c)** electrospun PCL structure; **(d)** electrospun PCL structure with mucin.

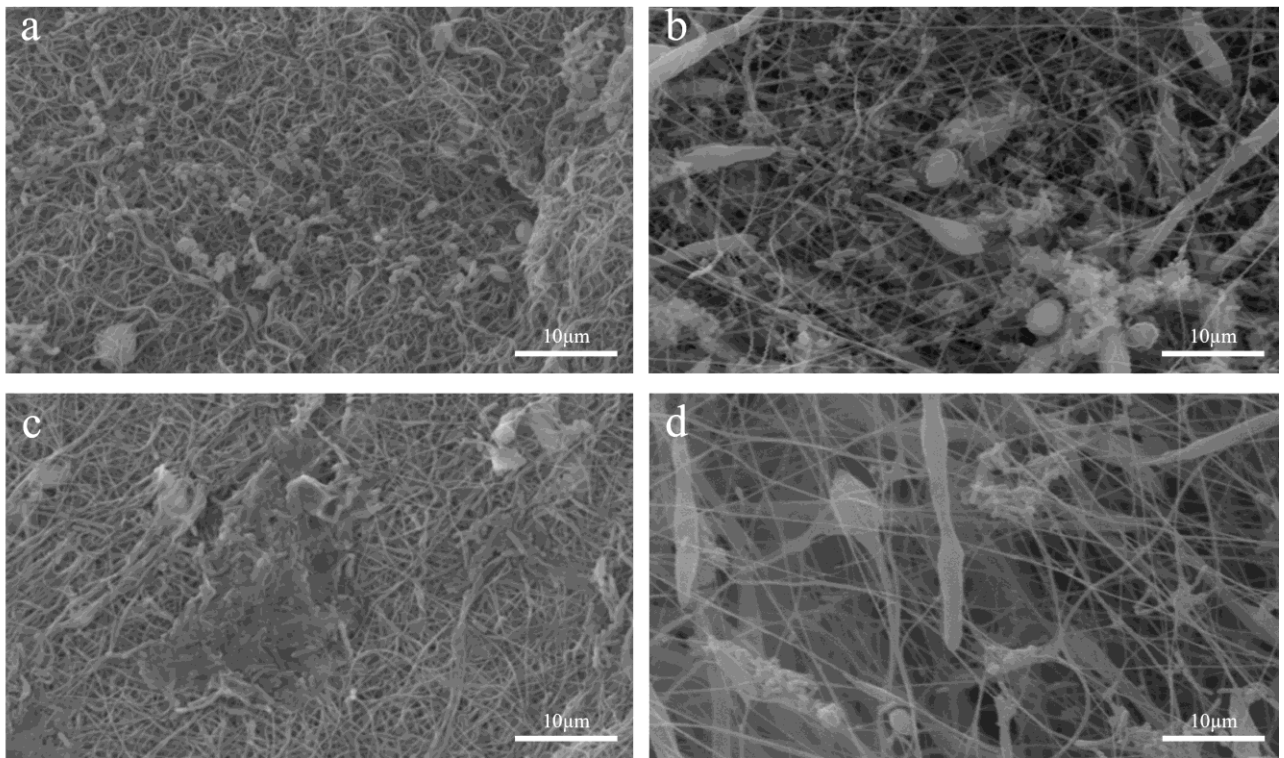


**Figure S3.** Live (green)/dead (red) imaging of the fecal microbiota cultured on the electrospun structures at 48 hours (z-stack images and 3D reconstruction). (a) Electrospun gelatin structure; (b) electrospun gelatin structure with mucin; (c) electrospun PCL structure; (d) electrospun PCL structure with mucin.

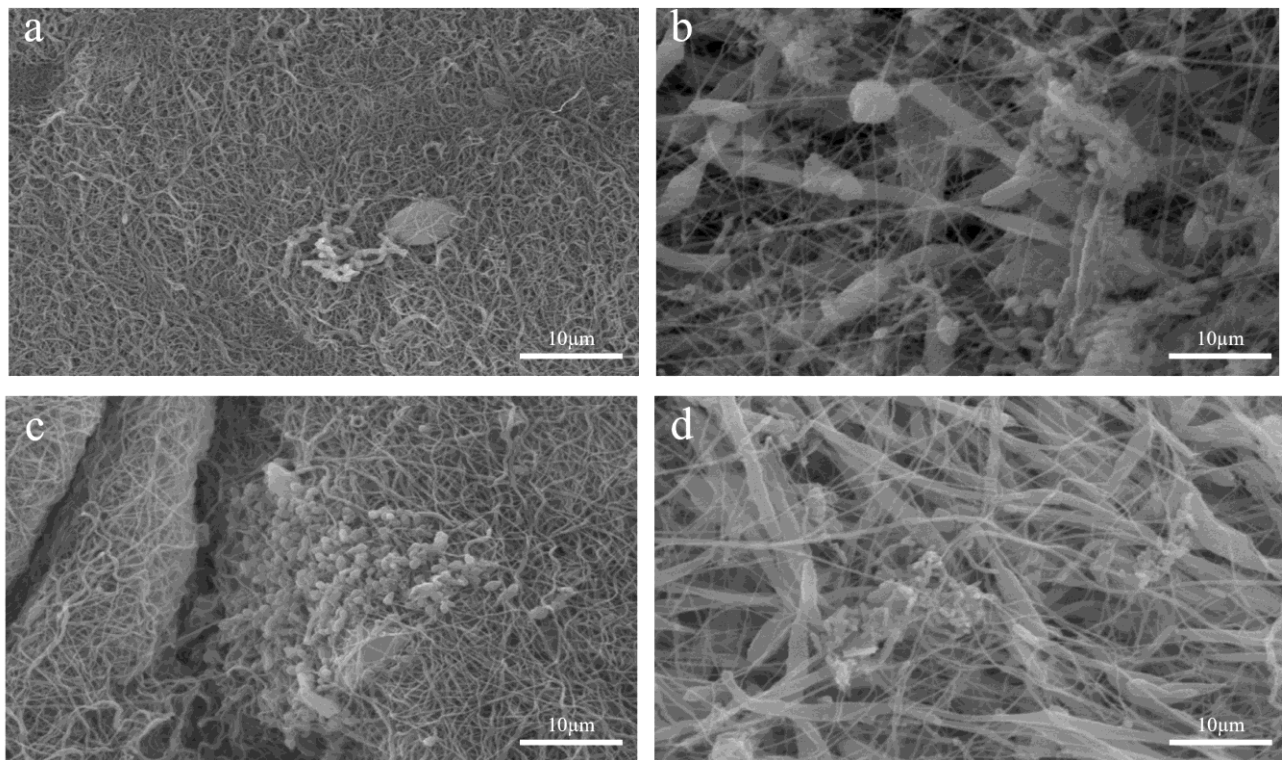


**Figure S4.** Live (green)/dead (red) imaging of the fecal microbiota cultured on the electrospun structures at 72 hours (z-stack images and 3D reconstruction). (a) Electrospun gelatin structure; (b) electrospun gelatin structure with mucin; (c) electrospun PCL structure; (d) electrospun PCL structure with mucin.

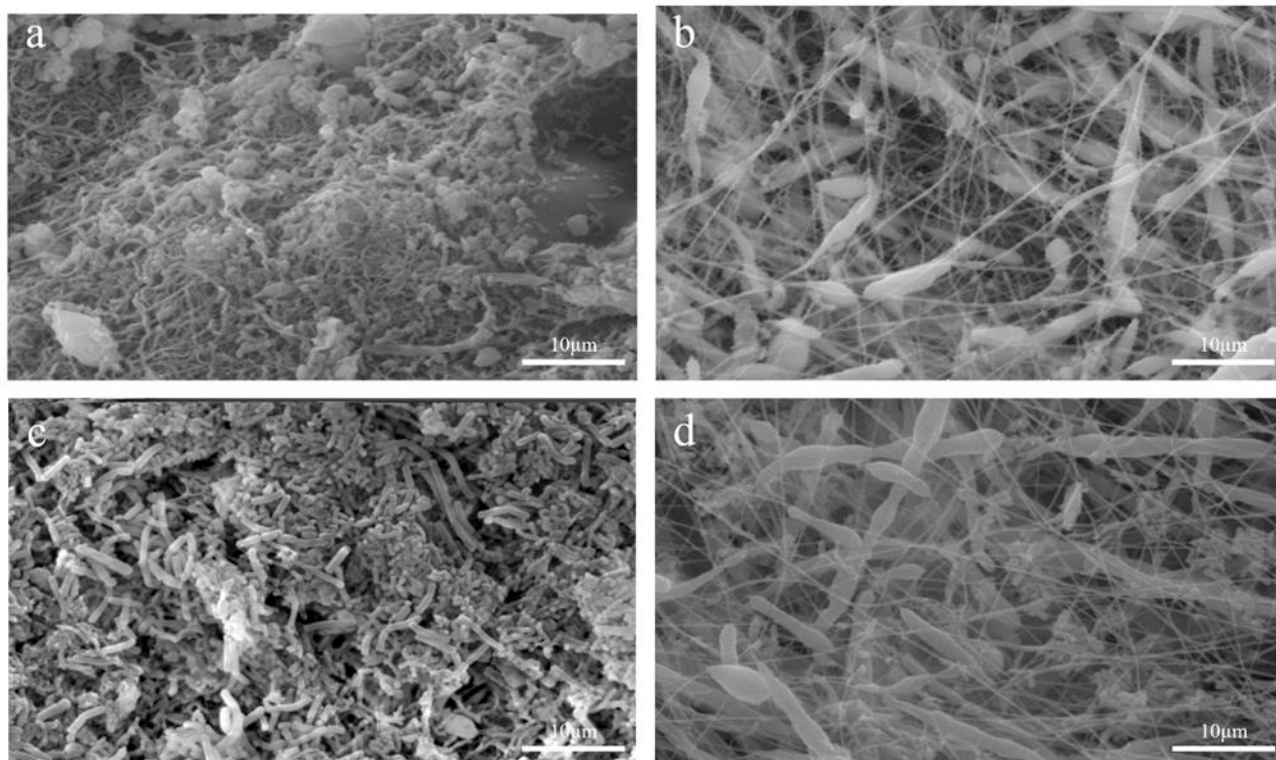




**Figure S5.** SEM imaging of the fecal microbiota cultured on the electrospun structures at 24 hours. (a) Electrospun gelatin structure; (b) electrospun PCL structure; (c) electrospun gelatin structure with mucins; (d) electrospun PCL structure with mucins.



**Figure S6.** SEM imaging of the fecal microbiota cultured on the electrospun structures at 48 hours. (a) Electrospun gelatin structure; (b) electrospun PCL structure; (c) electrospun gelatin structure with mucins; (d) electrospun PCL structure with mucins.



**Figure S7.** SEM imaging of the fecal microbiota cultured on the electrospun structures at 72 hours. (a) Electrospun gelatin structure; (b) electrospun PCL structure; (c) electrospun gelatin structure with mucins; (d) electrospun PCL structure with mucins.