

Figure S1. Voluntary caged wheel running distance in mice starting on day 0 after induction of VML. Data is shown as mean \pm SD (n=6).

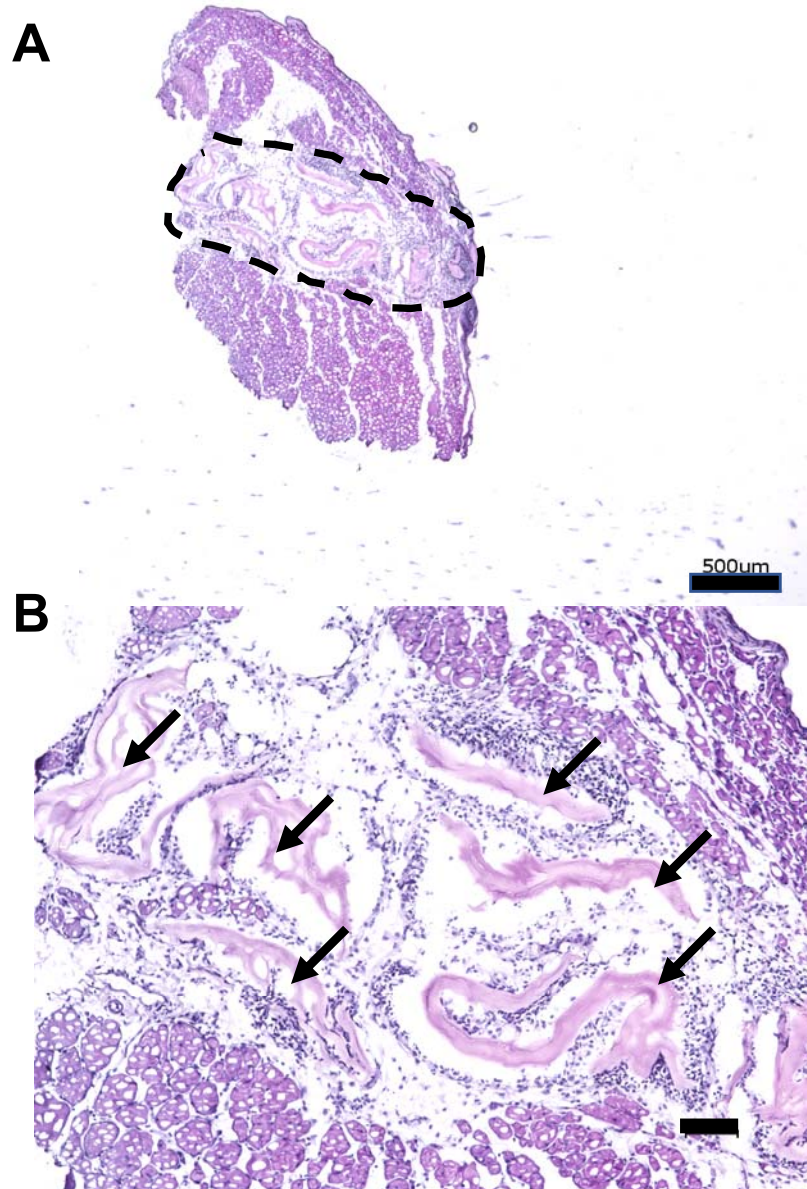


Figure S2. Representative histological images of bFGF scaffold implants at 3 weeks after induction of VML. **(A).** Low magnification image (2X objective) of scaffold implant, as shown by the dotted region in the hematoxylin and eosin stain. **(B).** Higher magnification image (10X objective) shows cellular infiltration and partial degradation of the collagen scaffolds, as indicated by the arrows. Scale bars: 500 μm **(A)** and 100 μm **(B)**.