
Supplementary Information

Buliding ultrathin $\text{Li}_4\text{Mn}_5\text{O}_{12}$ shell for enhancing the stability of cobalt-free lithium-rich manganese cathode materials

Yuhong Qiu ^{a b}, Xuefeng Peng ^a, Lichun Zhou ^b, Jie Yan ^a, Yaochen Song ^{a b},
Linnan Bi ^{a b}, Xin Long ^{a b}, Liang He ^b, Qingyu Xie ^b, Sizhe Wang ^{*b c}, Jiaxuan Liao ^{*a b}

^a School of Materials and Energy, University of Electronic Science and Technology of China, Chengdu 611731, P. R. China

^b Yangtze Delta Region Institute (QuZhou), University of Electronic Science and Technology of China, 324000, P. R. China

^c School of Materials Science and Engineering, Shaanxi Key Laboratory of Green Preparation and Functionalization for Inorganic Materials, Shaanxi University of Science & Technology, Xi'an 710021, P. R. China

* Corresponding authors.

E-mail addresses: kevinwang@sust.edu.cn (S. Wang); jxliao@uestc.edu.cn (J. Liao)

Table S1. Lattice parameters and characteristic peak ratios of the LNM、

LMO@LNM-1%、 LMO@LNM-3% and LMO@LNM-5%

Samples	$a/\text{\AA}$	$c/\text{\AA}$	c/a	$I_{(003)}/I_{(104)}$
LNM	2.8772	14.3398	4.9839	1.7426
LMO@LNM-1%	2.8707	14.2839	4.9758	1.7622
LMO@LNM-3%	2.8889	14.3719	4.9749	1.8184
LMO@LNM-5%	2.8939	14.2826	4.9354	1.8743

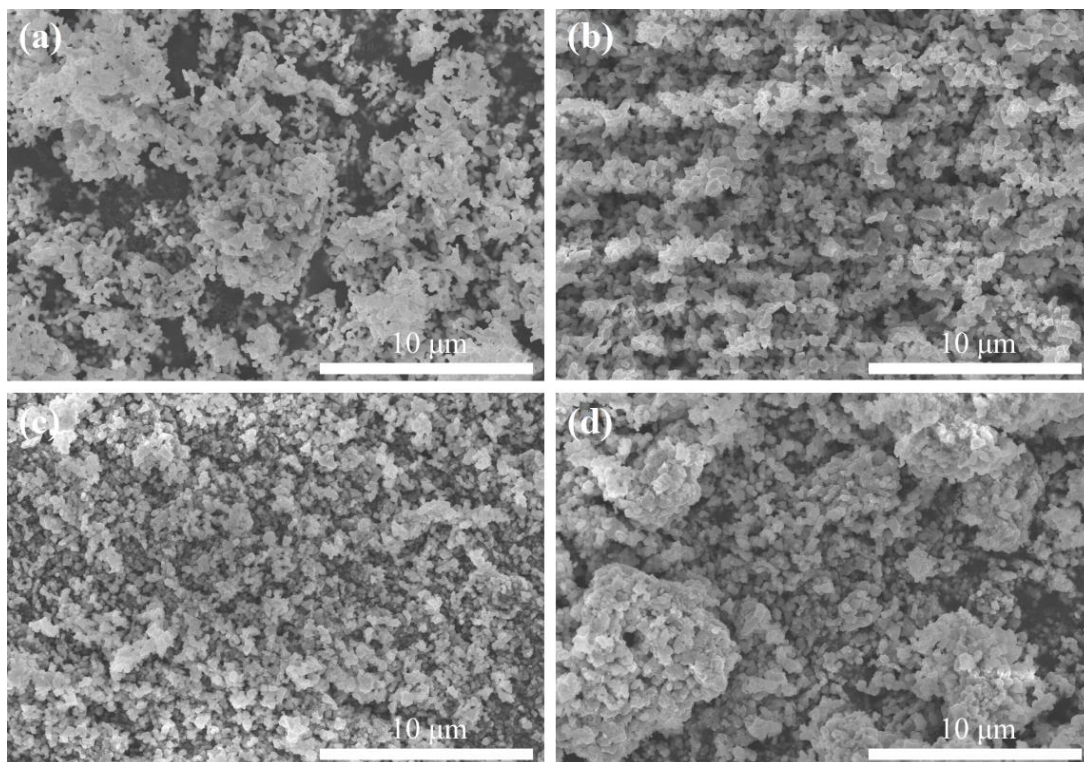


Figure S1. Low magnification SEM images of (a) LNM, (b) LMO@LNM-1%, (c) LMO@LNM-3%, (d) LMO@LNM-5%.

Table S2. Fitted impedance parameters, weber coefficients, and lithium-ion diffusion coefficients for the samples.

sample	R_e/Ω	R_{ct}/Ω	$\sigma/\Omega\cdot\text{cm}^2\cdot\text{s}^{-1/2}$	$D_{Li^+}/\text{cm}^2\cdot\text{s}^{-1}$
LNM	9.544	31.46	36.750	8.32×10^{-15}
LMO@LNM-1%	6.720	273.0	83.060	1.63×10^{-15}
LMO@LNM-3%	2.929	192.6	35.026	9.16×10^{-15}
LMO@LNM-5%	5.469	346.6	121.91	6.98×10^{-15}
