

Supplementary Material

A facile fabrication of porous MoSe₂/carbon microspheres via the aerosol process as anode materials in potassium-ion batteries

Du Yeol Jo^a and Seung-Keun Park^{a,b,c*}

^aDepartment of Advanced Materials Engineering, Chung-Ang University, 4726, Seodong-daero, Daedeok-myeon, Anseong, Gyeonggi-do 17546, Republic of Korea

^bDepartment of Intelligent Energy and Industry, Chung-Ang University, 84 Heukseok-ro, Dongjak-gu, Seoul, 06974, Republic of Korea

^cWestern Seoul Center, Korea Basic Science Institute, 150 Bugahyeon-ro, Seodaemun-gu, Seoul, 03759, Republic of Korea

*Corresponding Author. Email address: skpark09@cau.ac.kr (S.-K. Park)

This file includes:

- XRD patterns of p-MoSe₂@C MS and MoSe₂@C MS.
- TG curve of p-MoSe₂@C MS.
- Raman spectra of p-MoSe₂@C MS.
- CV curves of MoSe₂@C MS electrodes.
- Randle-type circuit model.
- The initial galvanostatic charge-discharge curves of p-MoSe₂@C MS and MoSe₂@C MS electrodes.
- SEM images after 200 cycles of p-MoSe₂@C MS and MoSe₂@C MS electrodes.

1. *Characterization*

The morphological and structural characteristics of the synthesized composites were investigated by field emission scanning electron microscopy (FE-SEM, using a HITACHI S-4300) and field emission transmission electron microscopy (FE-TEM, using a JEM-2100F, at the Korea Basic Science Institute in Daegu). Powder X-ray diffraction (XRD) patterns were recorded with an X'Pert PRO diffractometer using Cu-K α radiation (wavelength = 1.5418 Å) at the same institute in Daegu. The carbon content in the composites was quantified using a Pyris 1 thermogravimetric (TG) analyzer (Perkin Elmer), which operates over a temperature spectrum of 25-700 °C at a heating rate of 10 °C per minute in an air environment. In addition, X-ray photoelectron spectroscopy (XPS) was used to determine the chemical composition and oxidation states within the composites using a K-alpha⁺ model equipped with an Al K α monochromator. Raman spectroscopy (using a Horiba JY HR LabRam800) was used to study the carbon structures in the composites. In addition, the pore sizes and surface areas of the materials were determined using the Brunauer-Emmett-Teller (BET) technique with pure nitrogen gas as the adsorbent.

2. *Electrochemical measurement*

The electrochemical behavior of the p-MoSe₂@C MS electrodes was evaluated using a conventional 2032-type coin cell setup. To prepare the KIB anodes, the active material was combined with carbon black (Super P) and carboxymethyl cellulose (CMC) in a weight ratio of 7:2:1 in deionized water. This mixture was then spread evenly over a copper foil. The coin cell assembly was performed in a controlled environment in a glove box. It consisted of potassium metal as the counter electrode, a glass filter as the separator, and a 3 M solution of potassium bis(fluorosulfonyl)imide (KFSI) in anhydrous diethylene glycol dimethyl ether as the electrolyte. Charge and discharge characteristics and cyclic voltammetry (CV) tests were performed on a battery analyzer (WonATech, WBCS3000L) operating over a voltage range of 0.01-3.0 V at various current densities. In addition, electrochemical impedance spectroscopy (EIS) measurements were performed on the coin cells over a frequency range of 0.1-100 kHz.

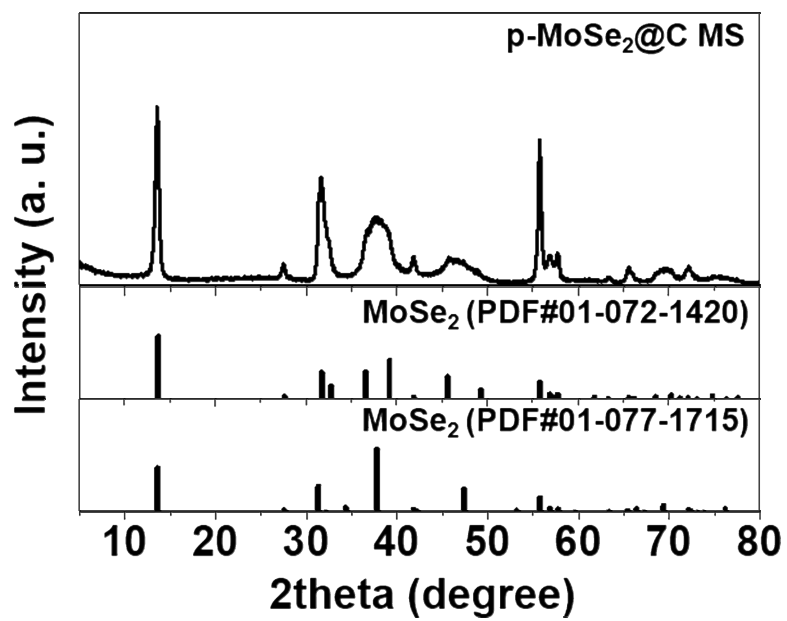


Figure S1. XRD patterns of p-MoSe₂@C MS and MoSe₂@C MS.

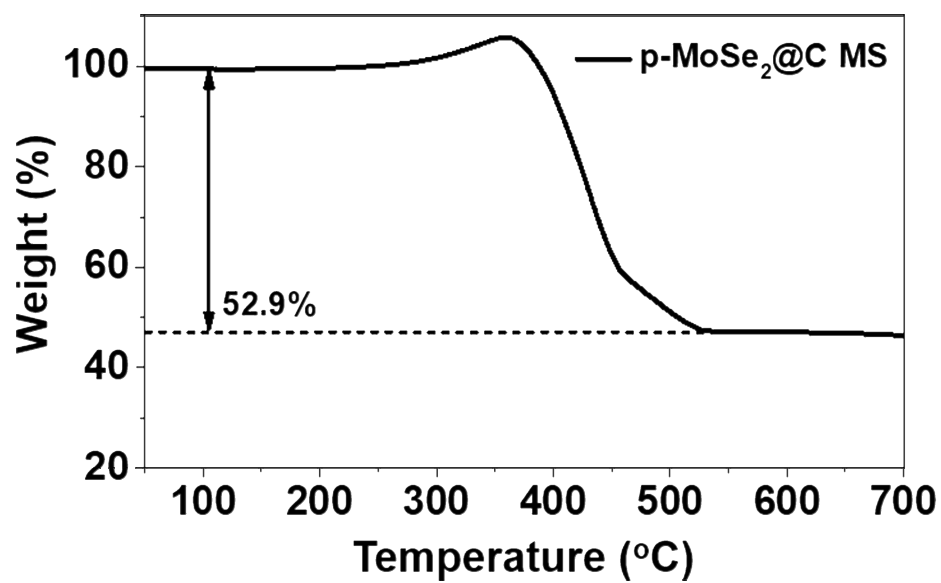


Figure S2. TG curve of p-MoSe₂@C MS.

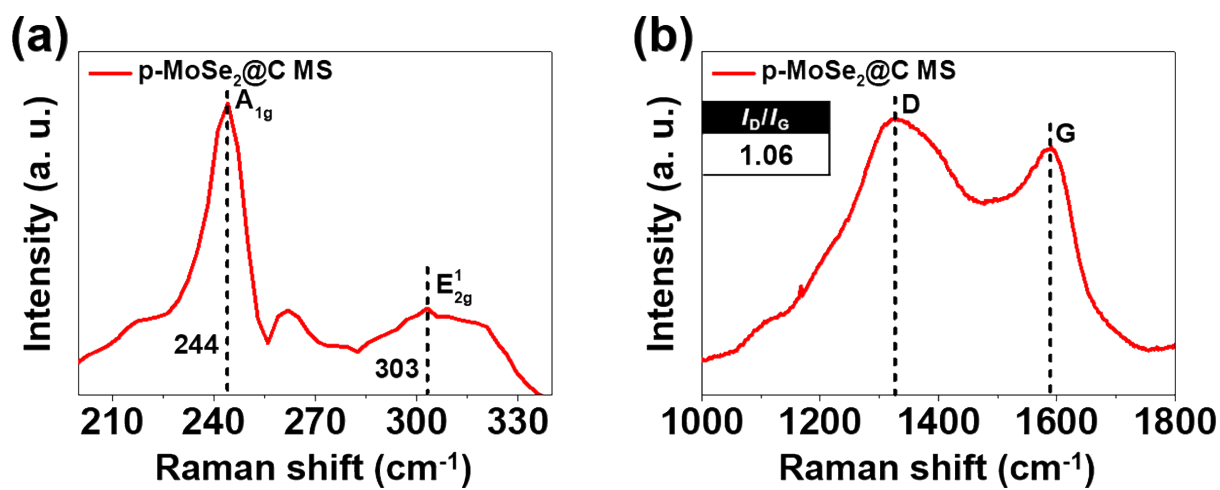


Figure S3. Raman spectra of p-MoSe₂@C MS.

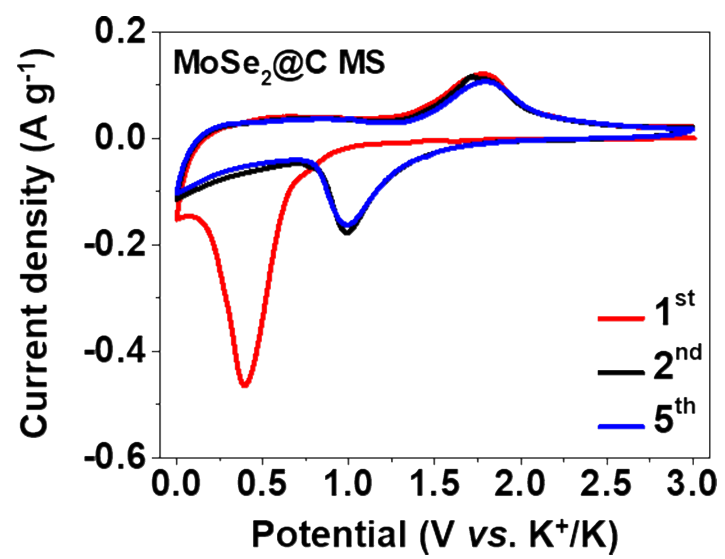


Figure S4. CV curves of MoSe₂@C MS electrodes.

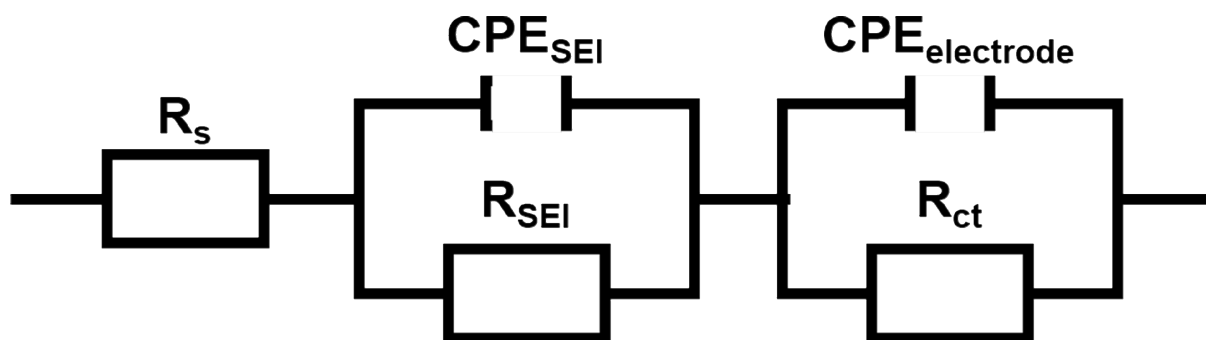


Figure S5. Randle-type circuit model.

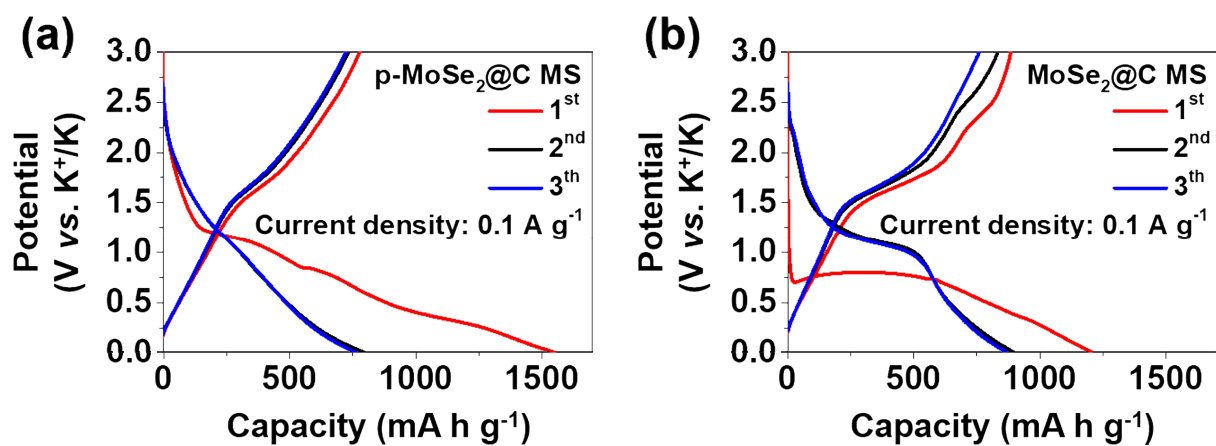
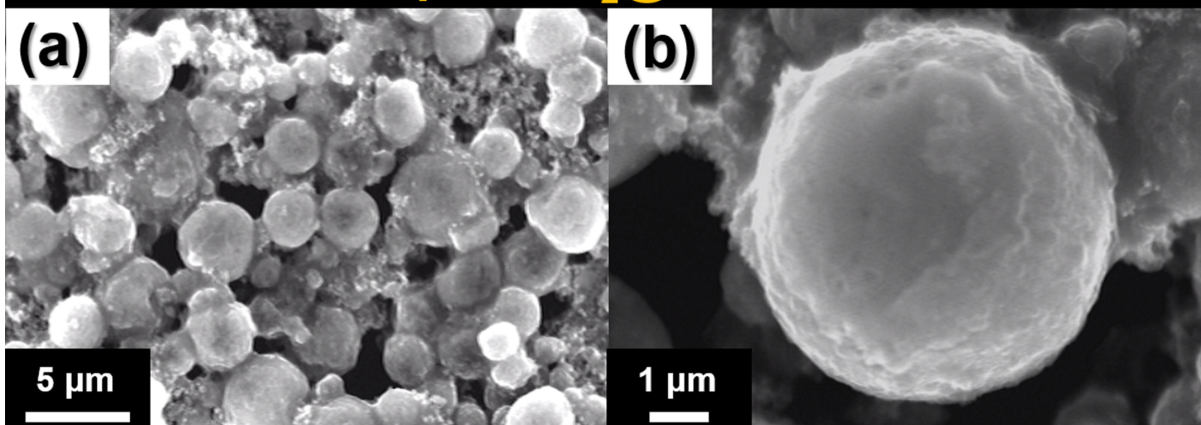


Figure S6. The initial galvanostatic charge-discharge curves of p-MoSe₂@C MS and MoSe₂@C MS electrodes.

After 200 cycles

p-MoSe₂@C MS



MoSe₂@C MS

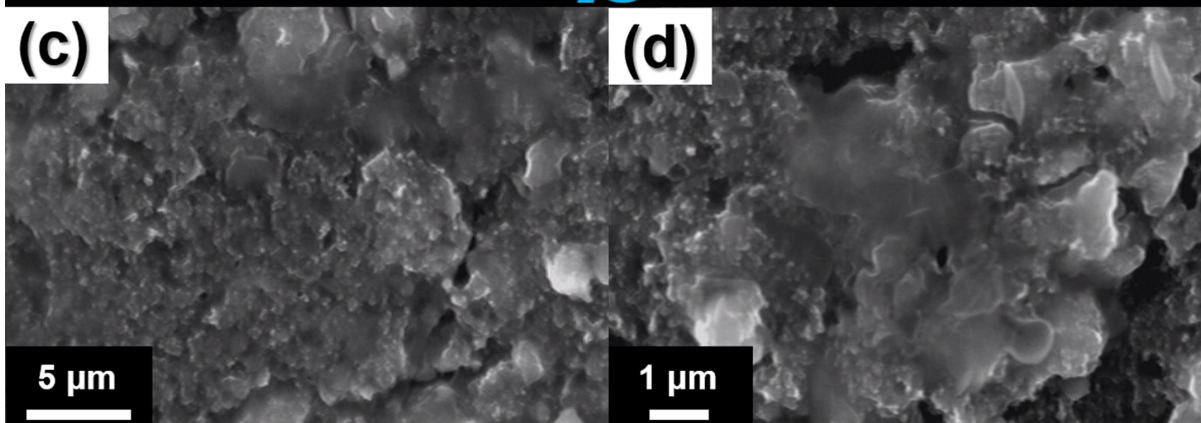


Figure S7. SEM images after 200 cycles of p-MoSe₂@C MS and MoSe₂@C MS electrodes.

Table S1. Electrochemical properties of various nanostructured Mo-based anode materials for potassium-ion batteries reported in the previous literatures.

Sample	Synthesis method	Voltage window [V]	Current density [mA g ⁻¹]	Discharge capacity [mA h g ⁻¹] (Cycle)	Ref.
p-MoSe₂@C MS	Spray-drying method	0.01-3.0	500	300 (300th)	Our work
MoSe ₂ /C-700	Electrospinning	0.01-3.0	100	316 (100 th)	[S1]
MoSe ₂ /N-C-2	Biomass adsorption method	0.01-3.0	100	240 (100 th)	[S2]
2H-MoS ₂ /CNC	Grinding-promoted intercalated exfoliation	0.01-2.5	200	203 (300 th)	[S3]
MoSe ₂ @NCNT	Hydrothermal method	0.01-3.0	100	247 (100 th)	[S4]
MoSe ₂ ⊂PNC-HNTs	low-temperature solution-phase method	0.01-3.0	100	260 (200 th)	[S5]
MoS ₂ @C	Three-roll milling	0.01-3.0	500	241 (100 th)	[S6]

REFERENCES

1. Shen, Q.; Jiang, P.; He, H.; Chen, C.; Liu, Y.; Zhang, M. Encapsulation of MoSe₂ in Carbon Fibers as Anodes for Potassium Ion Batteries and Nonaqueous Battery–Supercapacitor Hybrid Devices. *Nanoscale* **2019**, *11*, 13511-13520.
2. Lei, Z.; Li, X.; Liu, Y.; Wu, J.; Wang, Y.; Luo, Y.; Chen, Q.; Wei, M.; Zeng, L.; Qian, Q. Two-Dimensional MoSe₂/Chitosan-Derived Nitrogen-Doped Carbon Composite Enabling Stable Sodium/Potassium Storage. *J. Phys. Chem. Solids* **2022**, *163*, 110573.
3. Wang, H.; Niu, J.; Shi, J.; Lv, W.; Wang, H.; van Aken, P.A.; Zhang, Z.; Chen, R.; Huang, W. Facile Preparation of MoS₂ Nanocomposites for Efficient Potassium-Ion Batteries by Grinding-Promoted Intercalation Exfoliation. *Small* **2021**, *17*, 2102263.
4. Li, N.; Sun, L.; Wang, K.; Zhang, J.; Liu, X. Anchoring MoSe₂ Nanosheets on N-Doped Carbon Nanotubes as High Performance Anodes for Potassium-Ion Batteries. *Electrochim. Acta* **2020**, *360*, 136983.
5. Li, B.; Liu, Y.; Li, Y.; Jiao, S.; Zeng, S.; Shi, L.; Zhang, G. Dual-Functional Template-Directed Synthesis of MoSe₂/Carbon Hybrid Nanotubes with Highly Disordered Layer Structures as Efficient Alkali-Ion Storage Anodes beyond Lithium. *ACS Appl. Mater. Interfaces* **2020**, *12*, 2390-2399.
6. Chen, L.; Chen, Z.; Chen, L.; Zhou, P.; Wang, J.; Yang, H.; Feng, Z.; Li, X.; Huang, J. The Exfoliation of Bulk MoS₂ by a Three-Roller Mill for High-Performance Potassium Ion Batteries. *Appl. Surf. Sci.* **2023**, *615*, 156253.