

Supplementary Materials: Implementation of an On-Line Reactive Source Apportionment (ORSA) Algorithm in the FARM Chemical-Transport Model and Application over Multiple Domains in Italy

Giuseppe Calori, Gino Briganti, Francesco Ubaldi, Nicola Pepe, Ilaria D'Elia, Mihaela Mircea, Gian Franco Marras, Antonio Piersanti

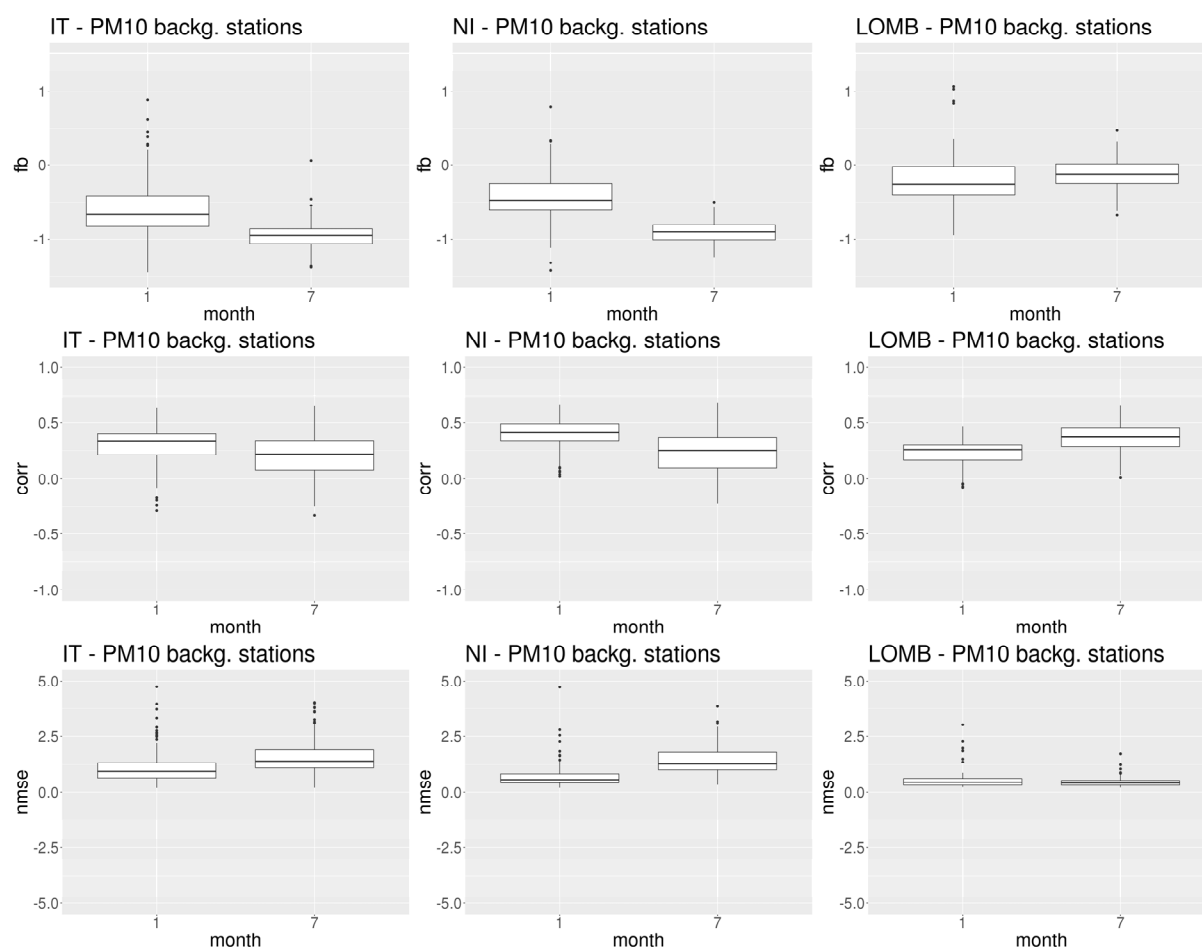


Figure S1. PM10: distributions of performance indices calculated over all the EIONET background stations included in the respective domains. From left to right: IT, NI, LOMB. From top to bottom: FB, CORR, NMSE.

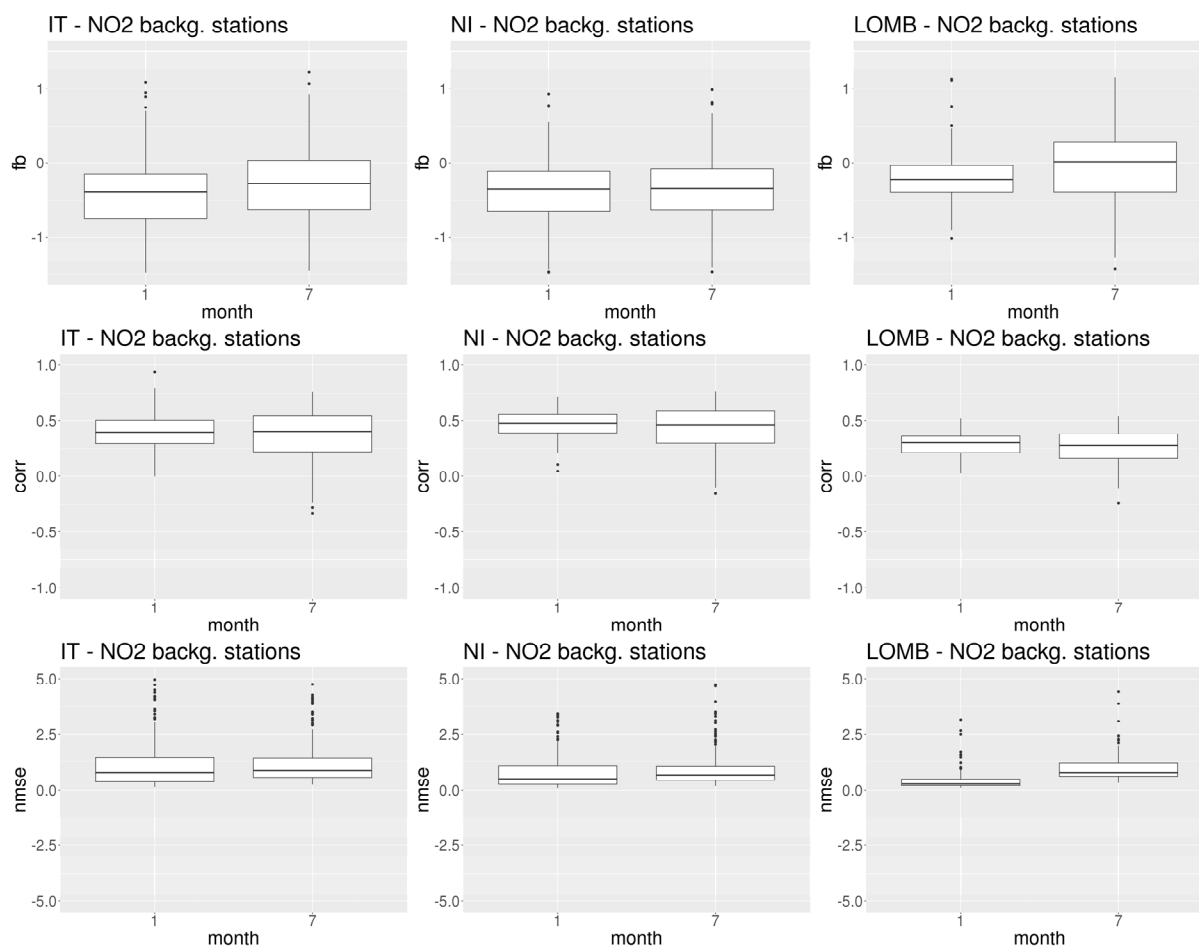


Figure S2. NO₂: distributions of performance indices calculated over all the EIONET background stations included in the respective domains. From left to right: IT, NI, LOMB. From top to bottom: FB, CORR, NMSE.

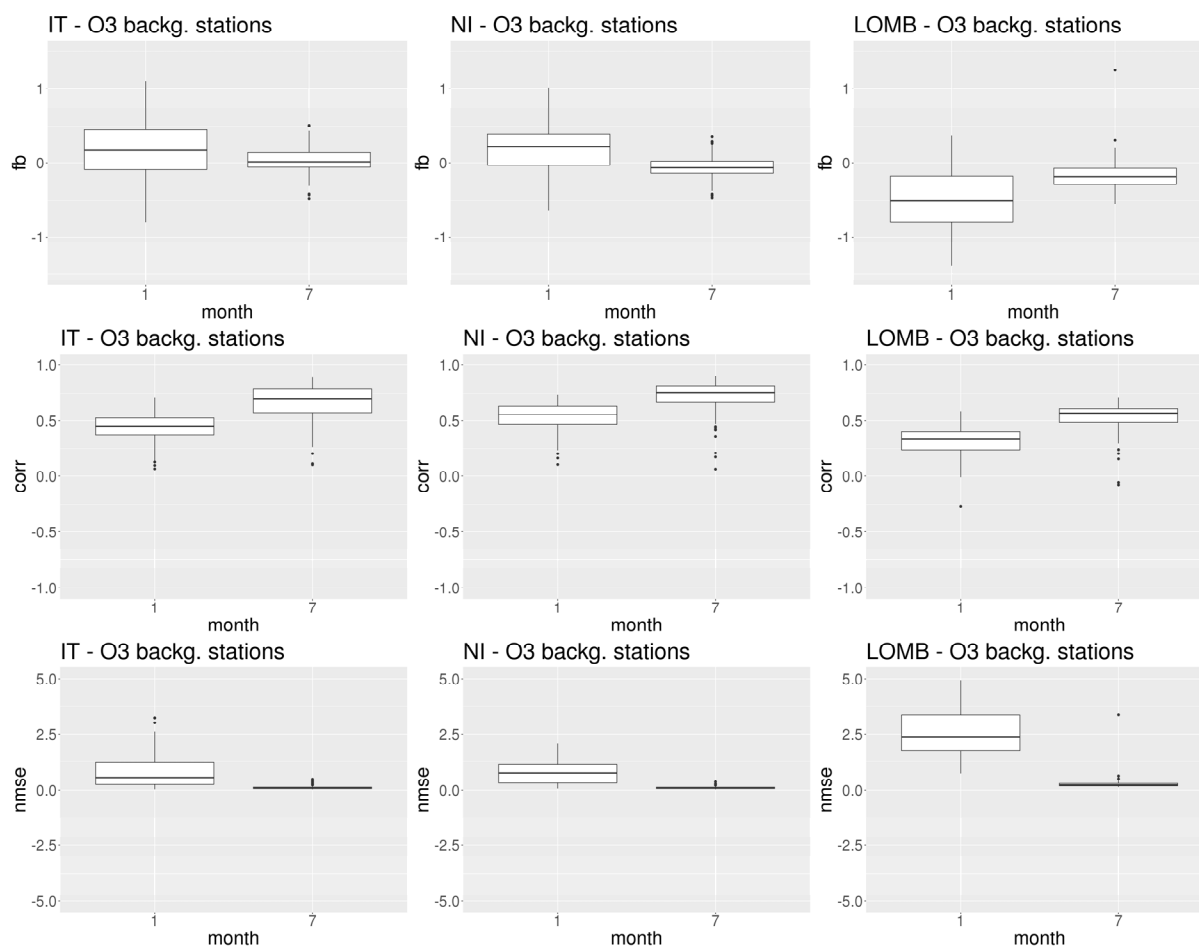
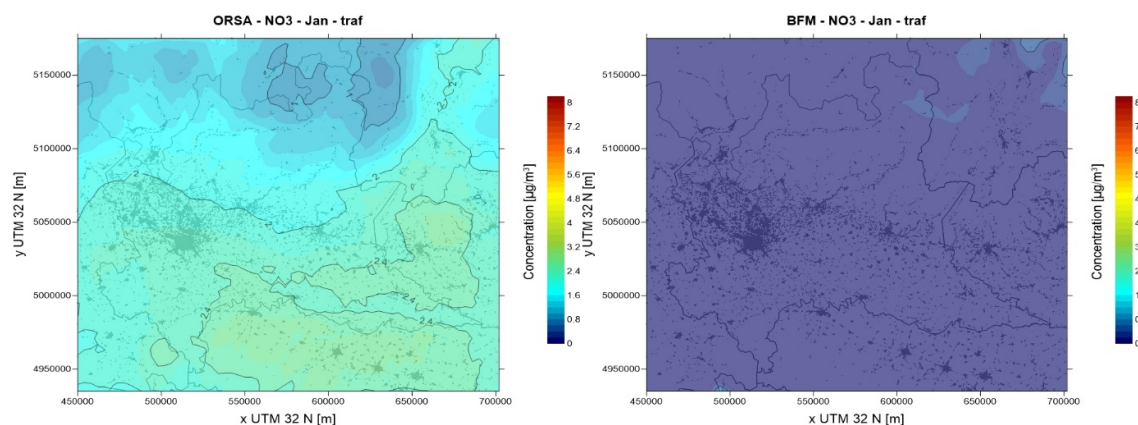


Figure S3. O₃: distributions of performance indices calculated over all the EIONET background stations included in the respective domains. From left to right: IT, NI, LOMB. From top to bottom: FB, CORR, NMSE.



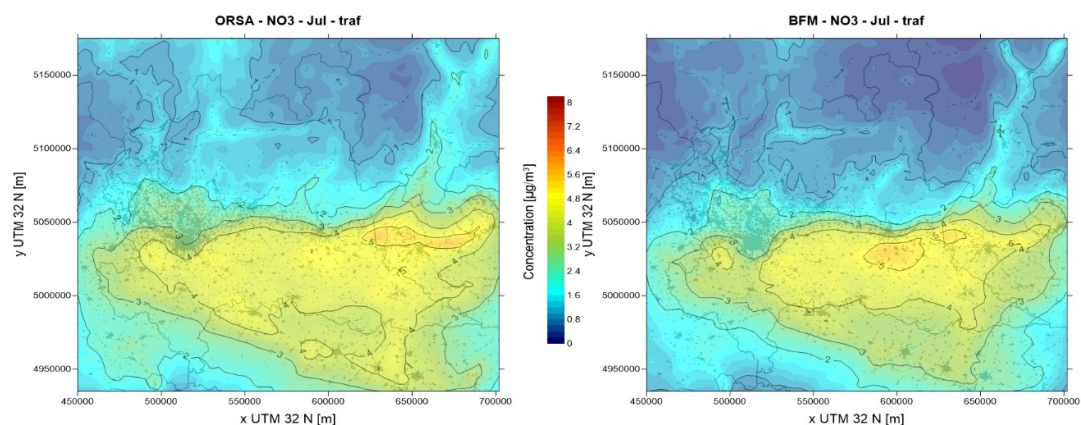


Figure S4. NO₃ concentration maps for traffic with tagged species (ORSA, on the left) and brute force method (BFM, on the right) for January (upper row) and July (bottom row).

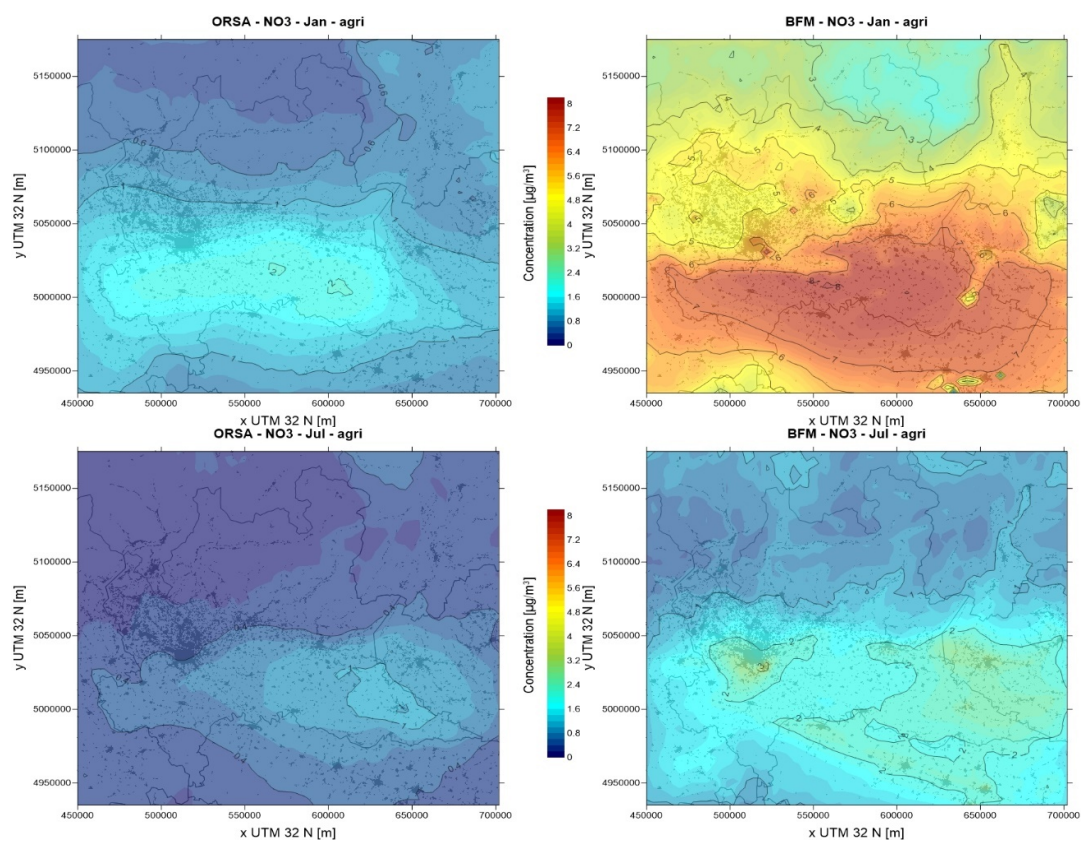


Figure S5. NO₃ concentration maps for agriculture with tagged species and brute force methods for January and July.

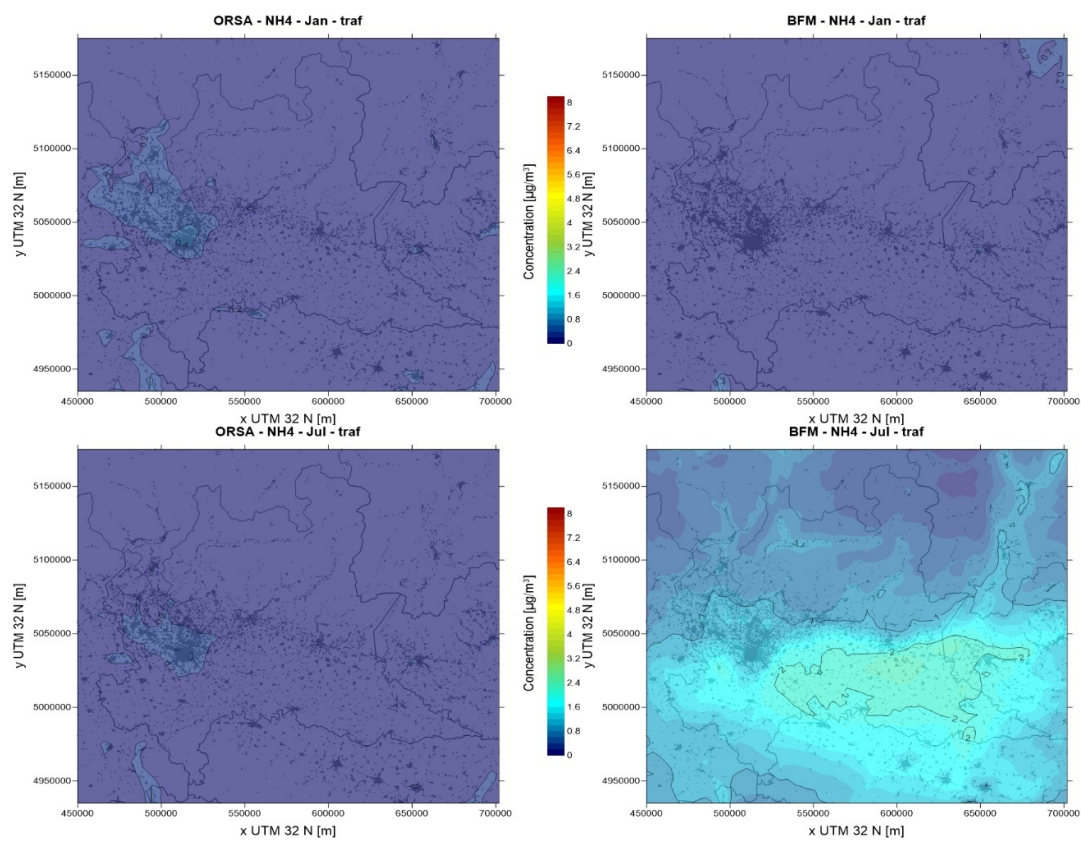


Figure S6. NH_4 concentration maps for traffic with tagged species and brute force methods for January and July.

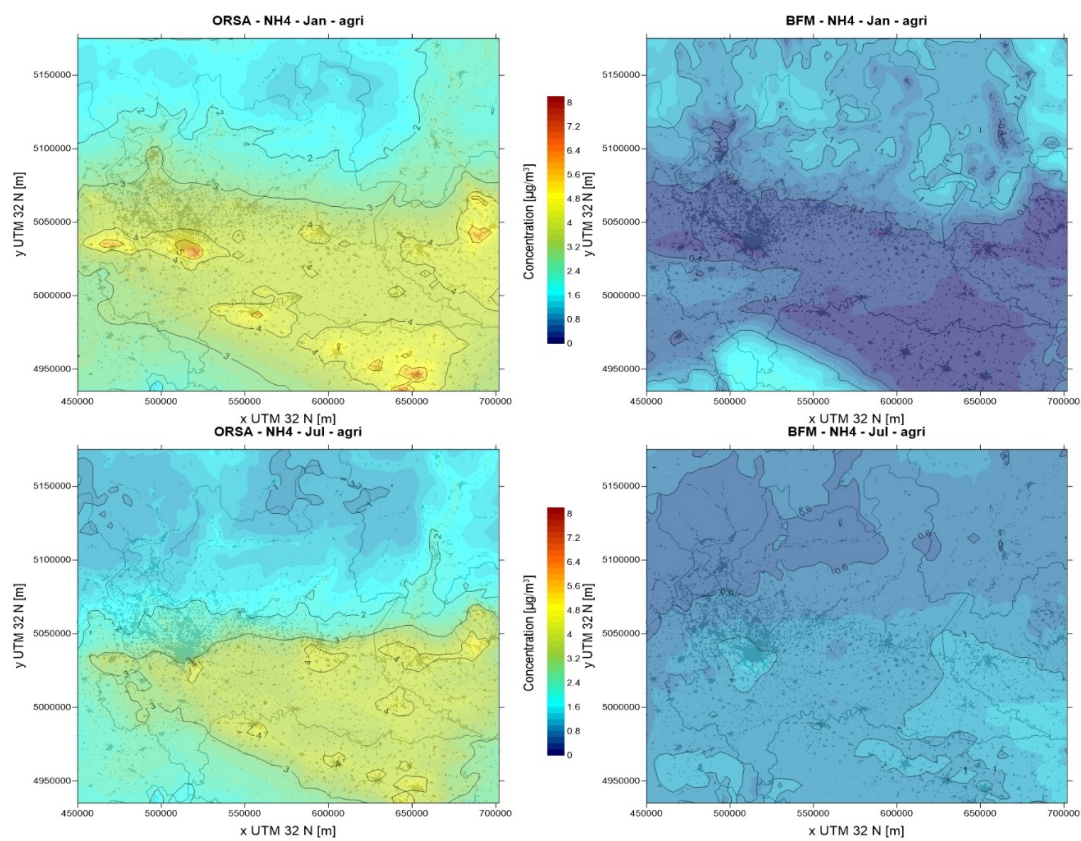


Figure S7. NH_4 concentration maps for agriculture with tagged species and brute force methods for January and July.