

The 1-31-Day Predictions of the South China Sea Summer Monsoon in the CAMS-CSM Climate Forecast System

Xin Wang, Yi Fan *, Lijuan Wang and Yan Zhu

Key Laboratory of Meteorology Disaster, Ministry of Education (KLME),
Joint International Research Laboratory of Climate and Environment Change (ILCEC),
Collaborative Innovation Center on Forecast and Evaluation of Meteorological Disasters (CIC-FEMD),
Nanjing University of Information Science & Technology, Nanjing 210044, China;
201983300381@nuist.edu.cn (X.W.); wljfw@163.com (L.W.); zhuyan9473@outlook.com (Y.Z.)
* Correspondence: fany@nuist.edu.cn

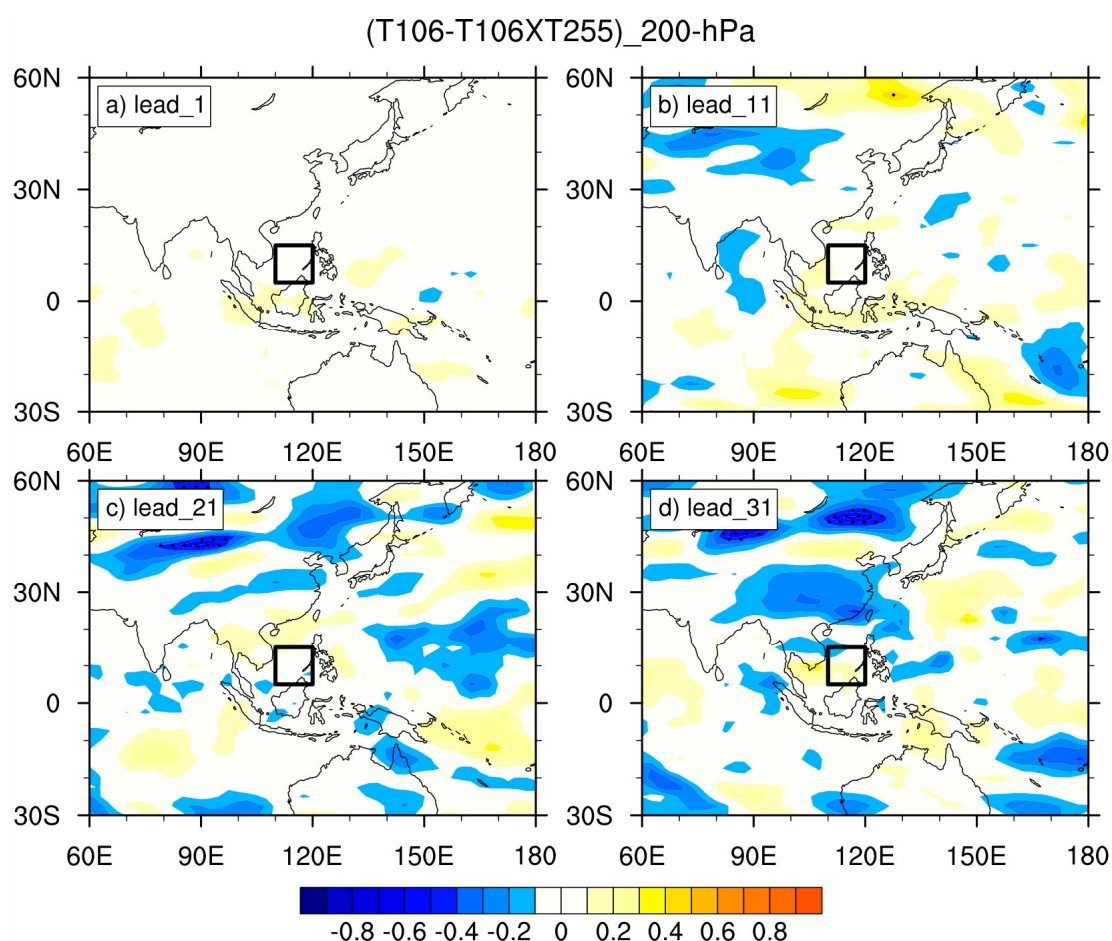


Figure S1. | The TCC difference (T106 minus T106 × T255) between prediction results (T106 and T106 × T255) and reanalysis (NCEP2) (shade) of 200 hPa zonal wind; the areas exceeding 95% confidence level according to Student's t-test are dotted. The black box represents the area limited by SCSSM onset index (5–15°N, 110–120°E). (a–d) represent the results of different lead times (1–31 days), respectively.

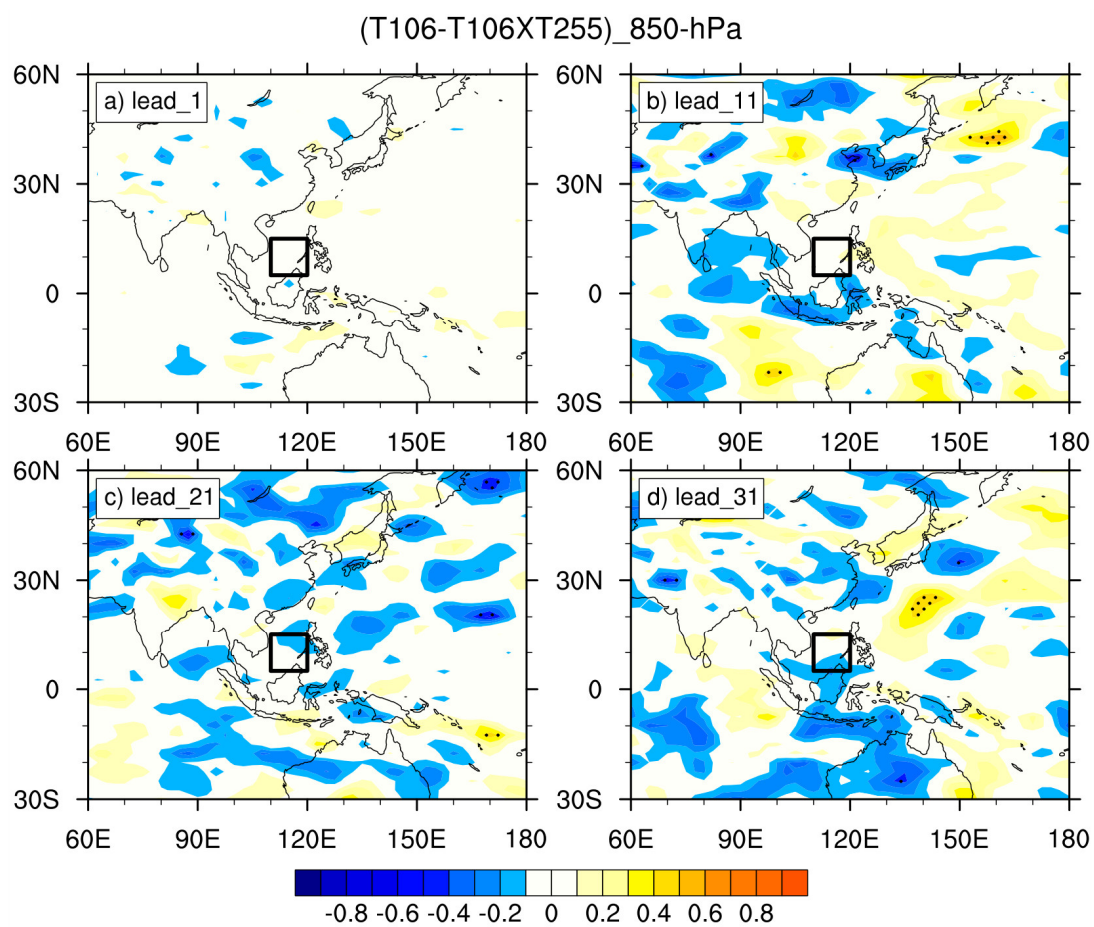


Figure S2. | Same as Figure S1 but for 850 hPa zonal wind.

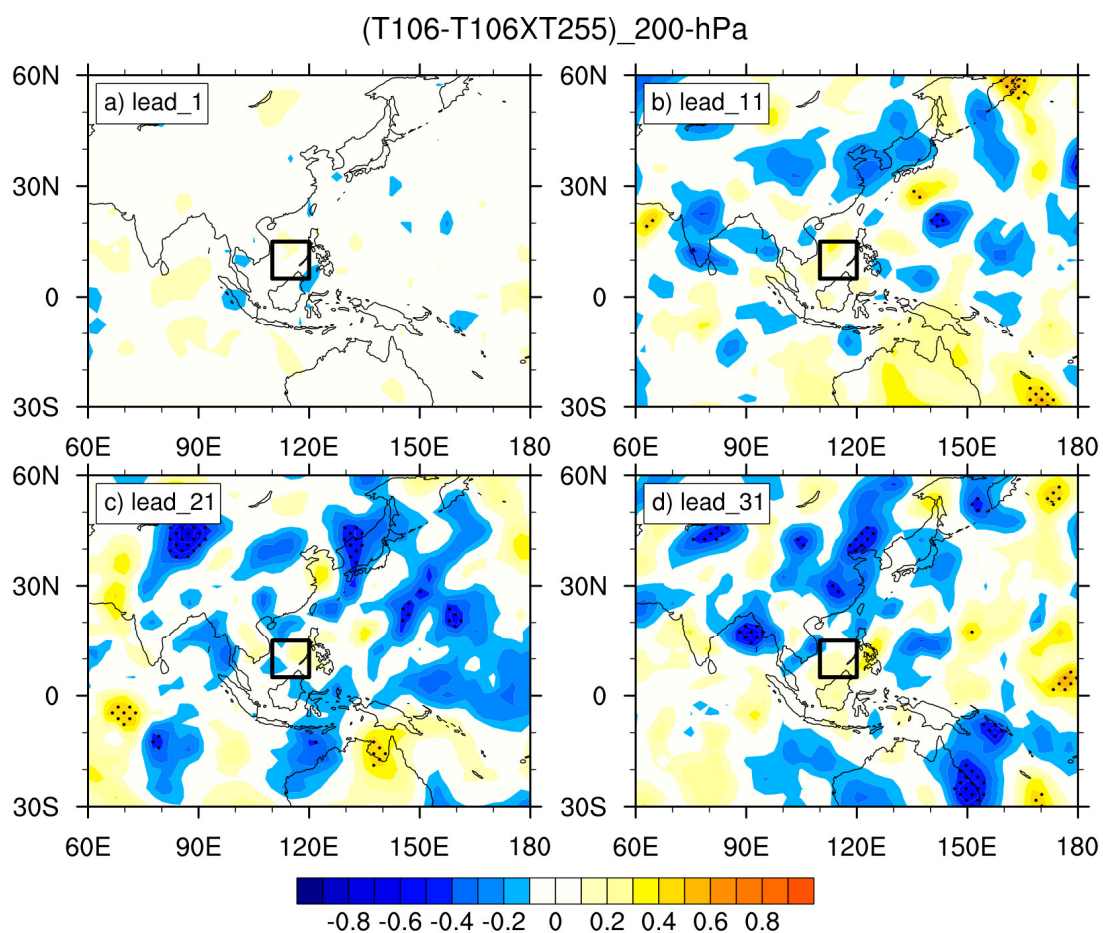


Figure S3. | Same as Figure S1 but for 200 hPa meridional wind.

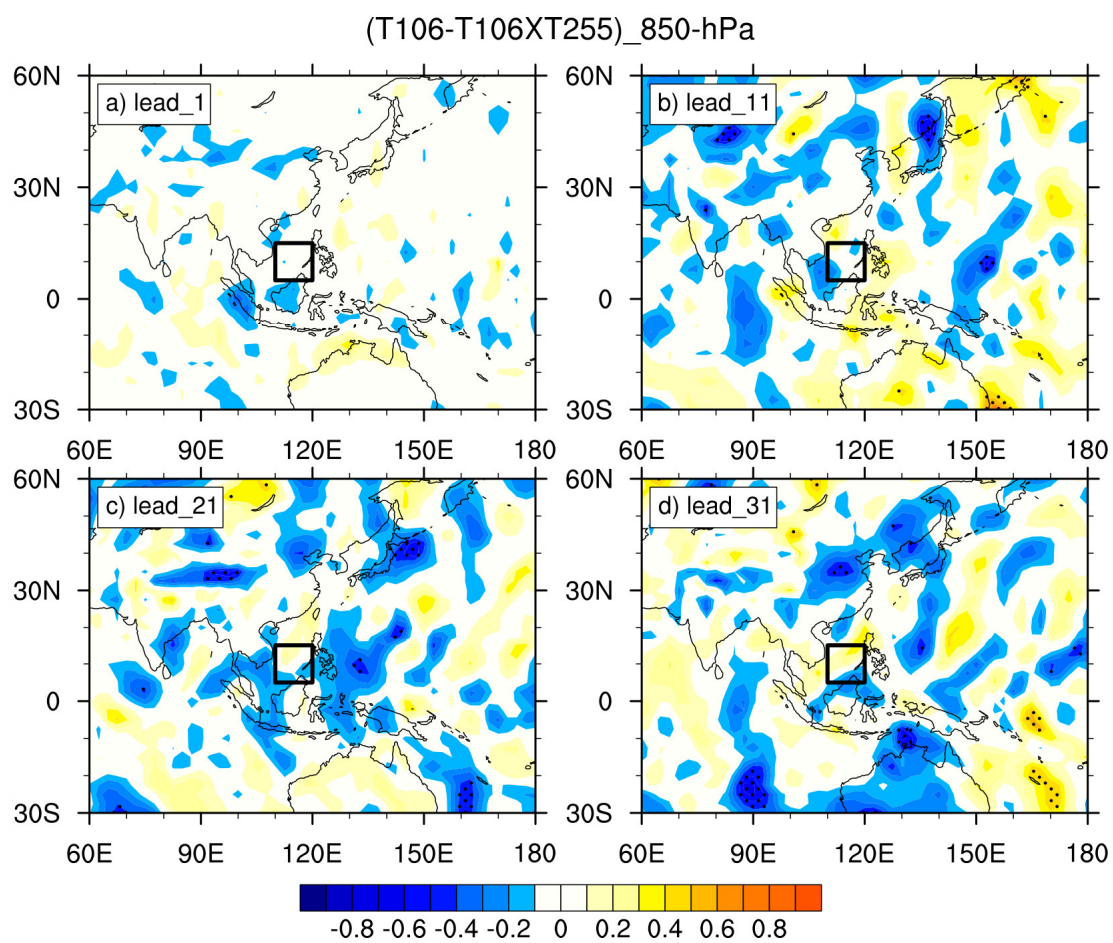


Figure S4. | Same as Figure S1 but for 850 hPa meridional wind.

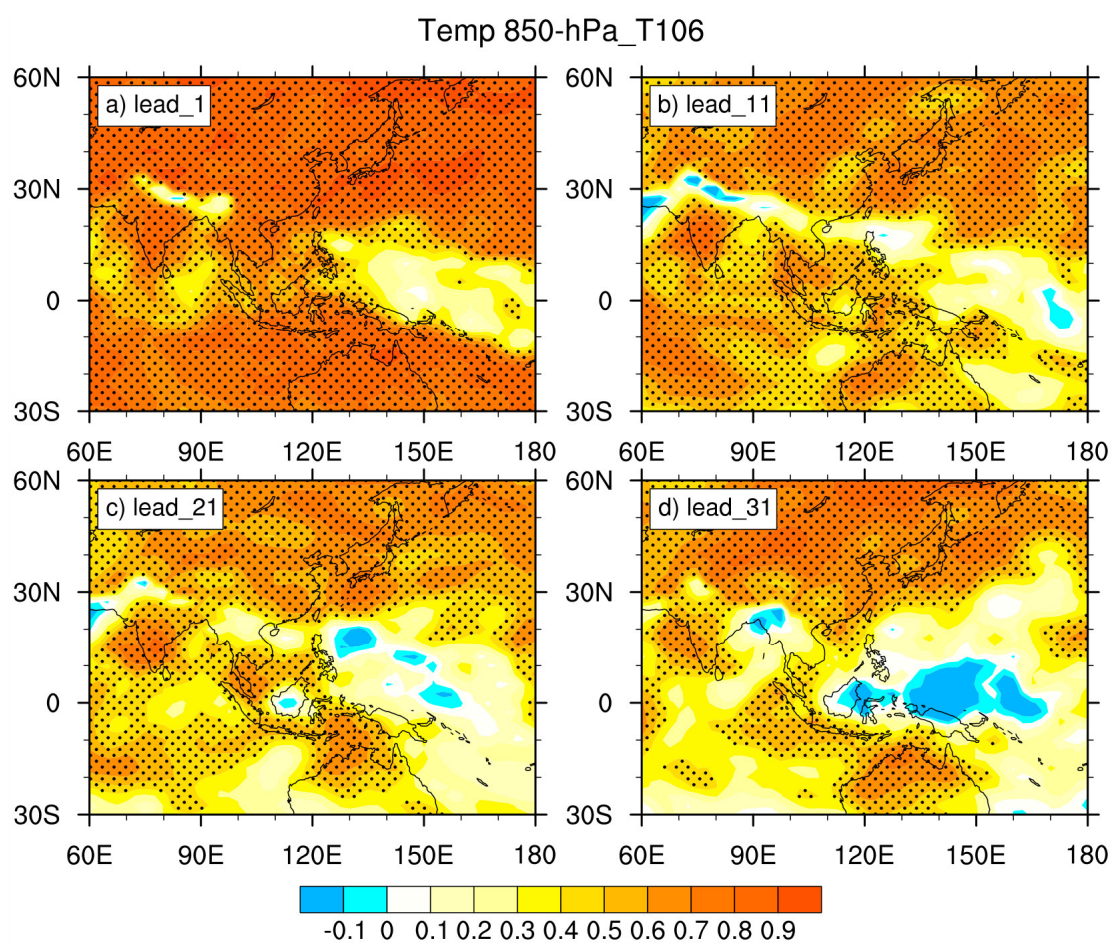


Figure S5. | The TCC distribution between prediction results (T106) and reanalysis results (NCEP2) (shade) of 850 hPa T; the areas exceeding 95% confidence level according to Student's t-test are dotted. The black box represents the area limited by SCSSM onset index (5–15°N, 110–120°E). (a–d) represent the results of different lead times, respectively.

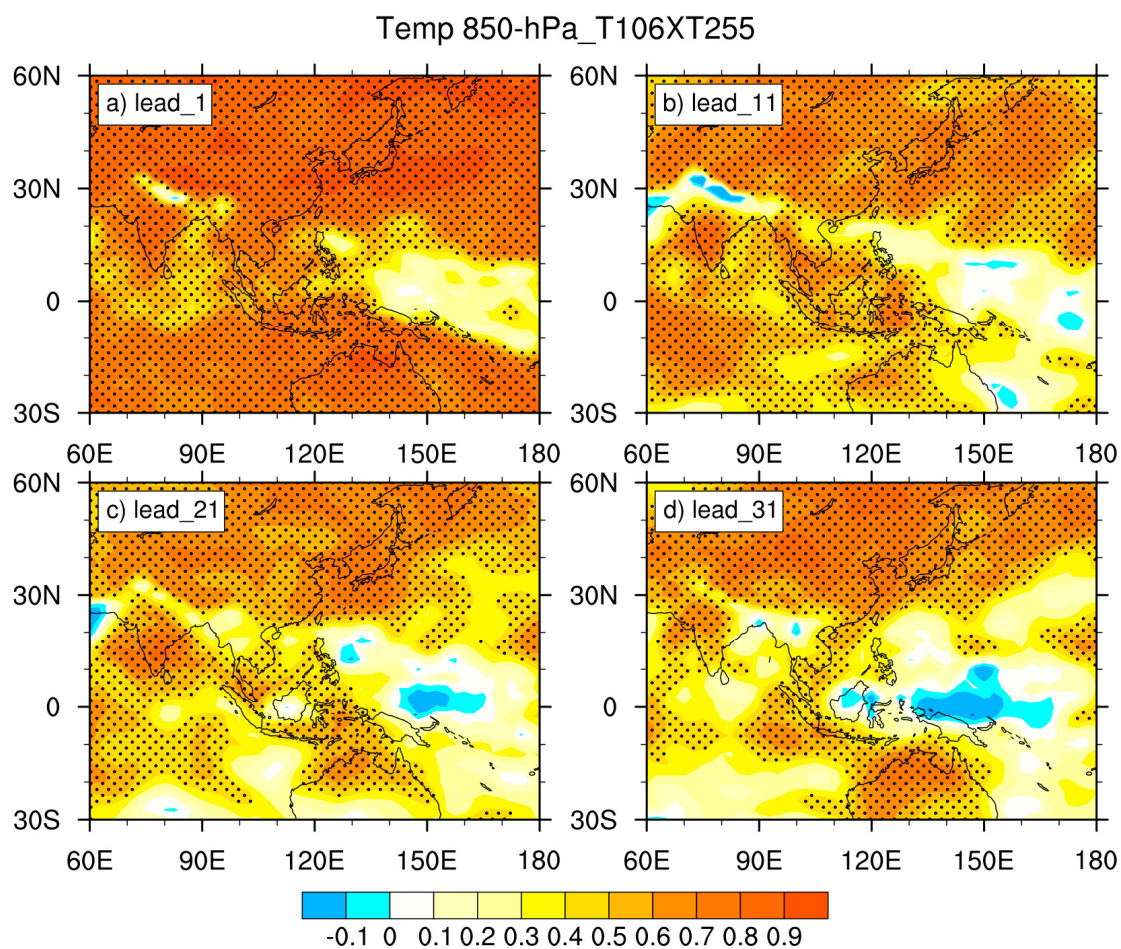


Figure S6. | Same as Figure S5 but for 850 hPa T in T106 × T255.

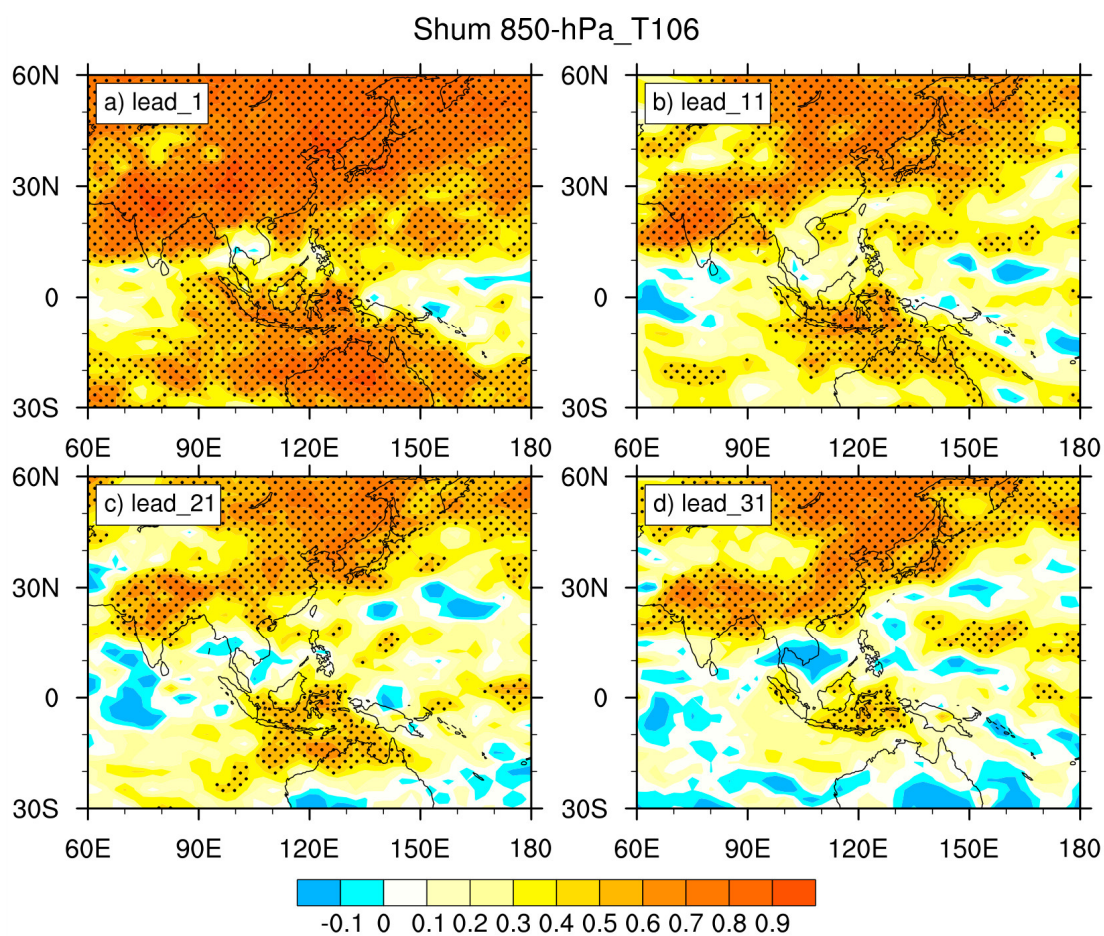


Figure S7. Same as Figure S5 but for 850 hPa q in T106.

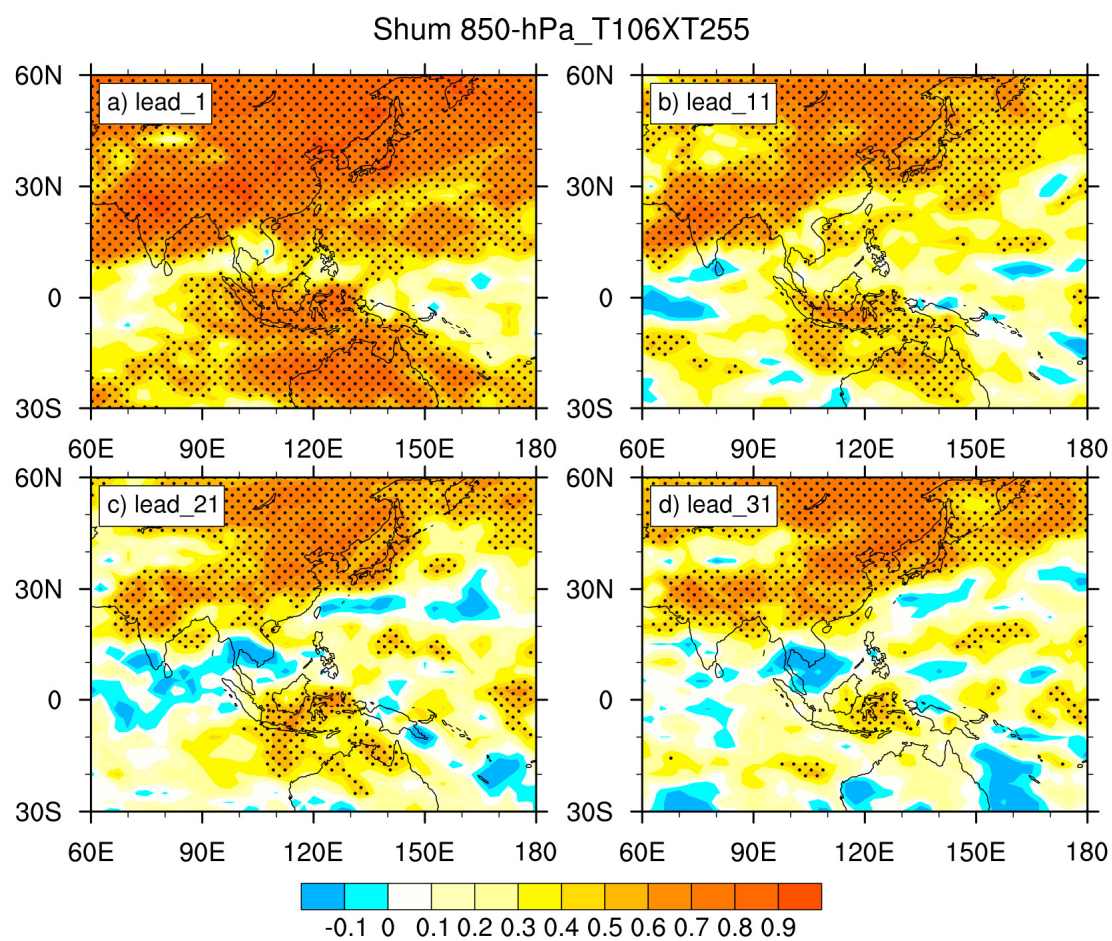


Figure S8. | Same as Figure S5 but for 850 hPa-specific q in T106 × T255.