

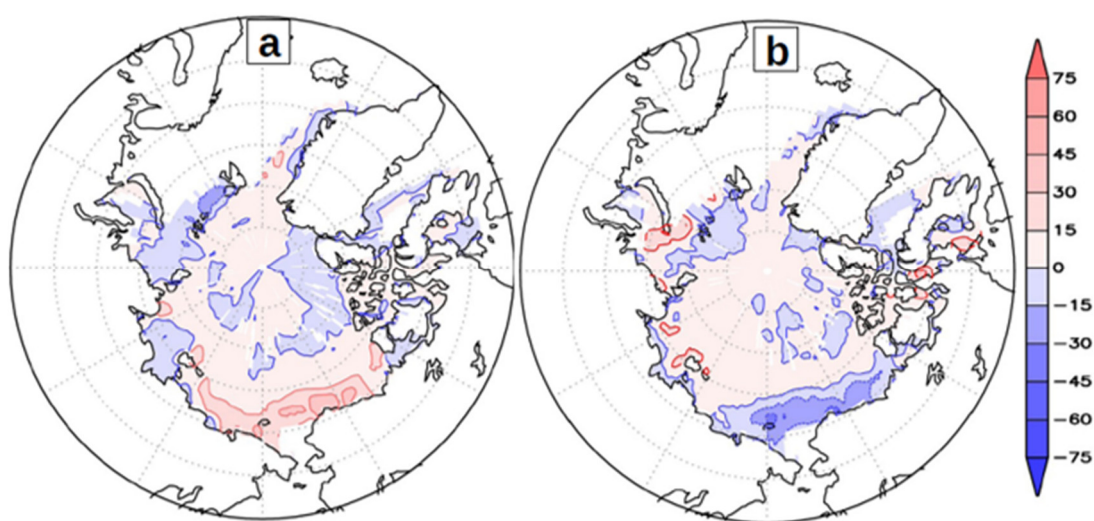
# A Physical Mechanism for the Indian Summer Monsoon—Arctic Sea-Ice Teleconnection

Suchithra Sundaram <sup>1,\*</sup> and David M. Holland <sup>1,2</sup>

<sup>1</sup> Center for Global Sea Level Change, New York University Abu Dhabi, Abu Dhabi 129188, United Arab Emirates; dmh4@nyu.edu

<sup>2</sup> Courant Institute of Mathematical Sciences, New York University, New York 10012-1185, NY, USA

\* Correspondence: suchithrasundaram@gmail.com



**Figure S1.** Composites of September Sea ice concentration (%) anomalies for (a) strong ISM years (b) weak ISM years. Climatology is based on the Hadley Centre Sea Ice and Sea Surface Temperature data set (HadISST) V.2.2.0.0 for the period 1951–2000.