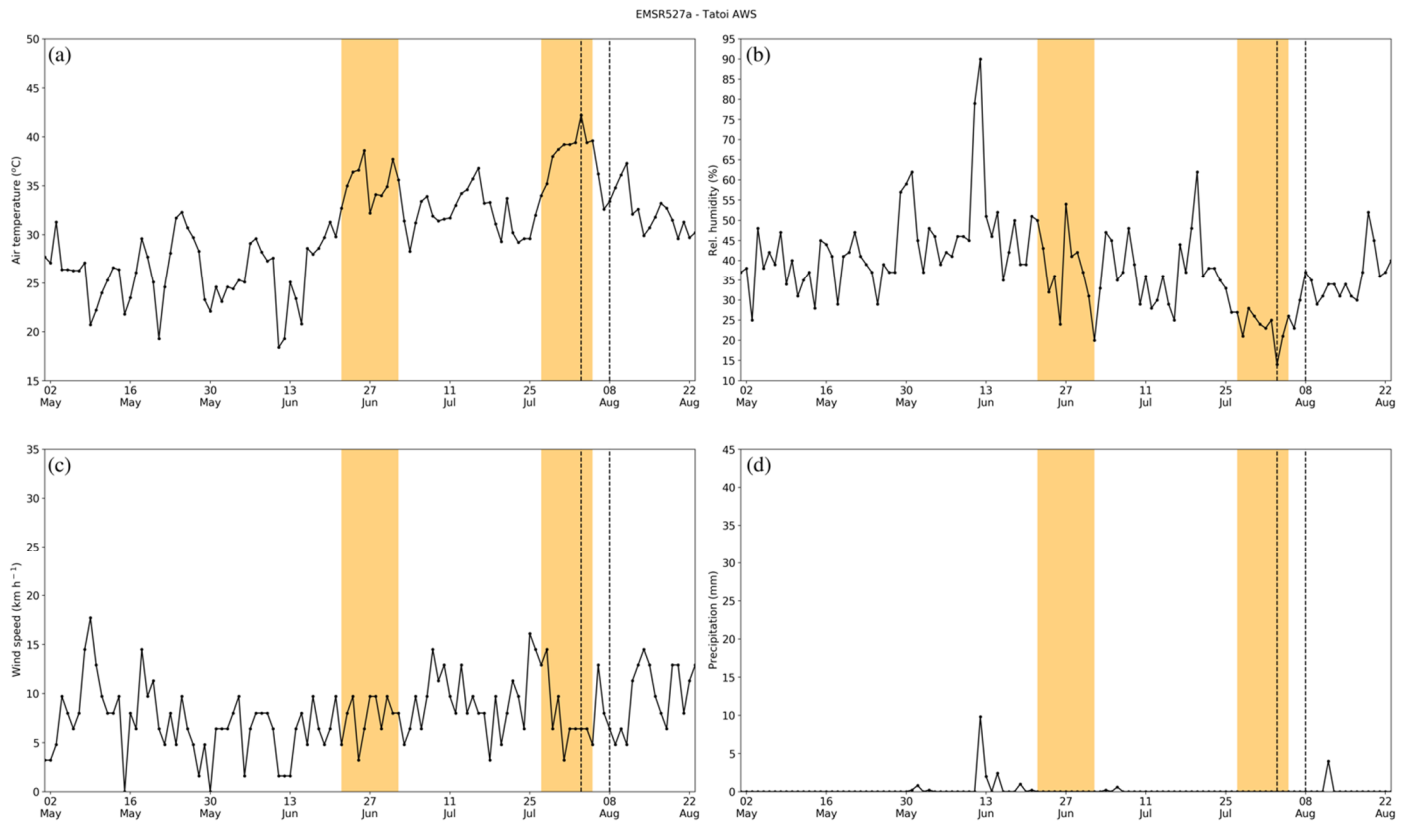
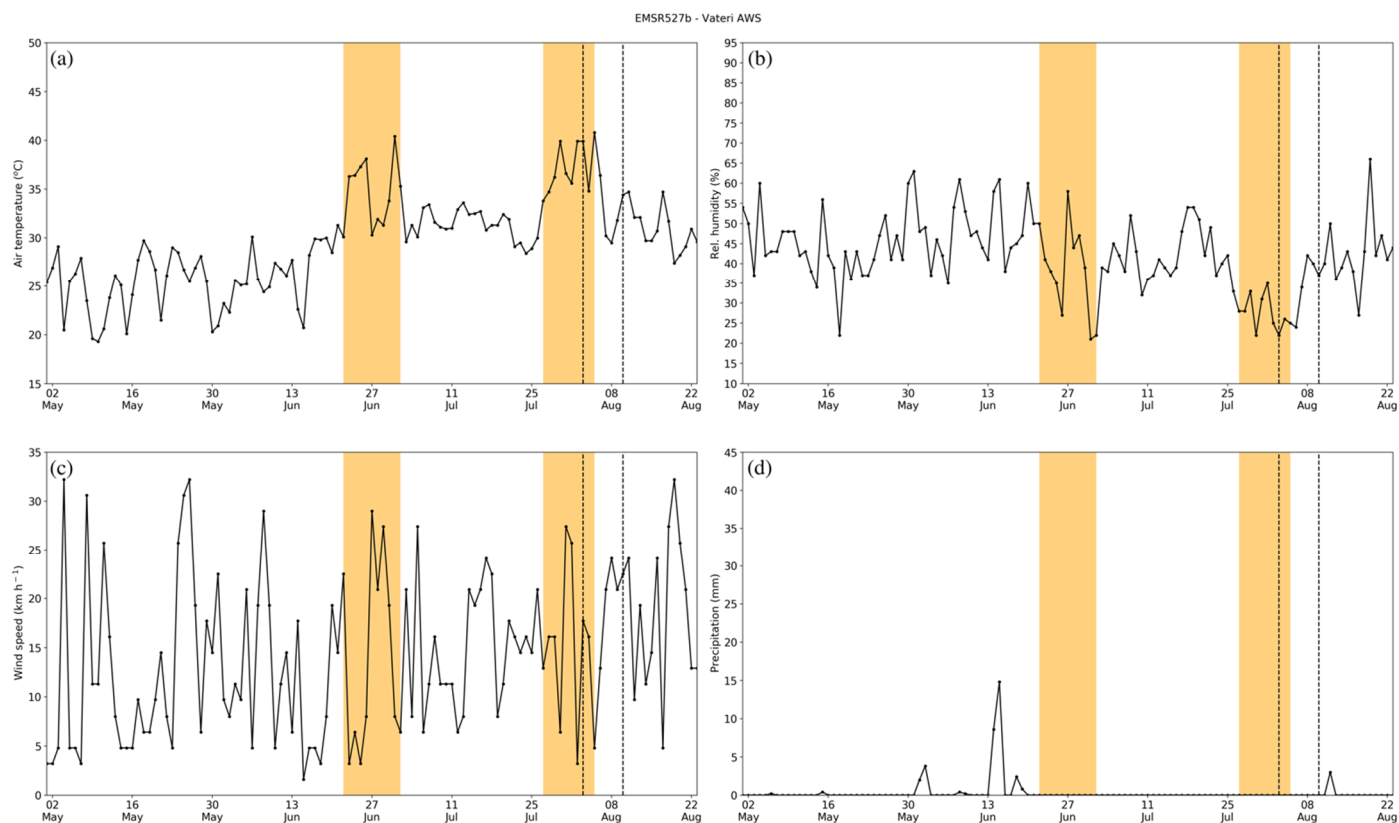


# Meteorological Analysis of the 2021 Extreme Wildfires in Greece: Lessons Learned and Implications for Early Warning of the Potential for Pyroconvection

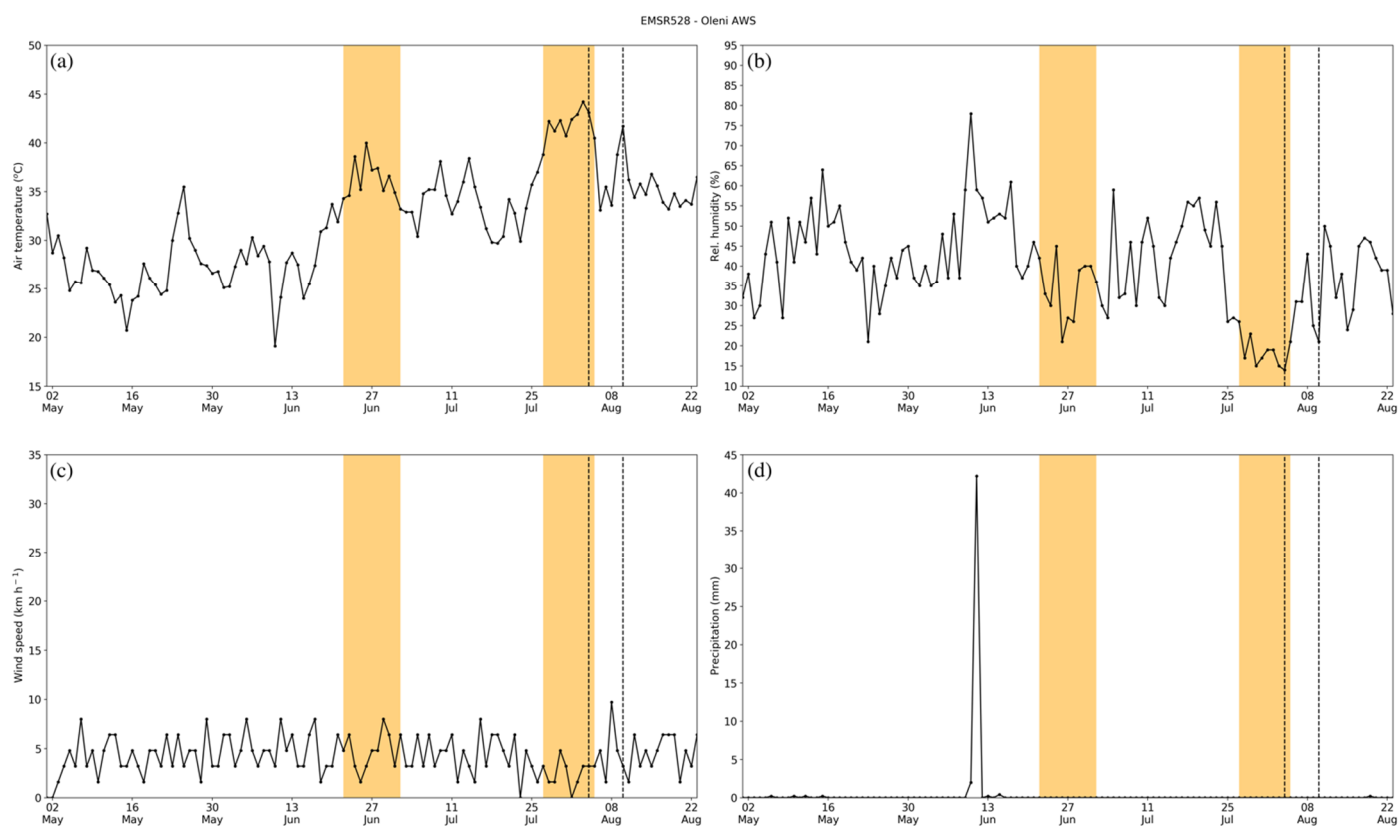
Theodore M. Giannaros <sup>1,\*</sup>, Georgios Papavasileiou <sup>1</sup>, Konstantinos Lagouvardos <sup>1</sup>, Vassiliki Kotroni <sup>1</sup>, Stavros Dafis <sup>1,2</sup>, Athanasios Karagiannidis <sup>1</sup> and Eleni Dragozi <sup>1</sup>



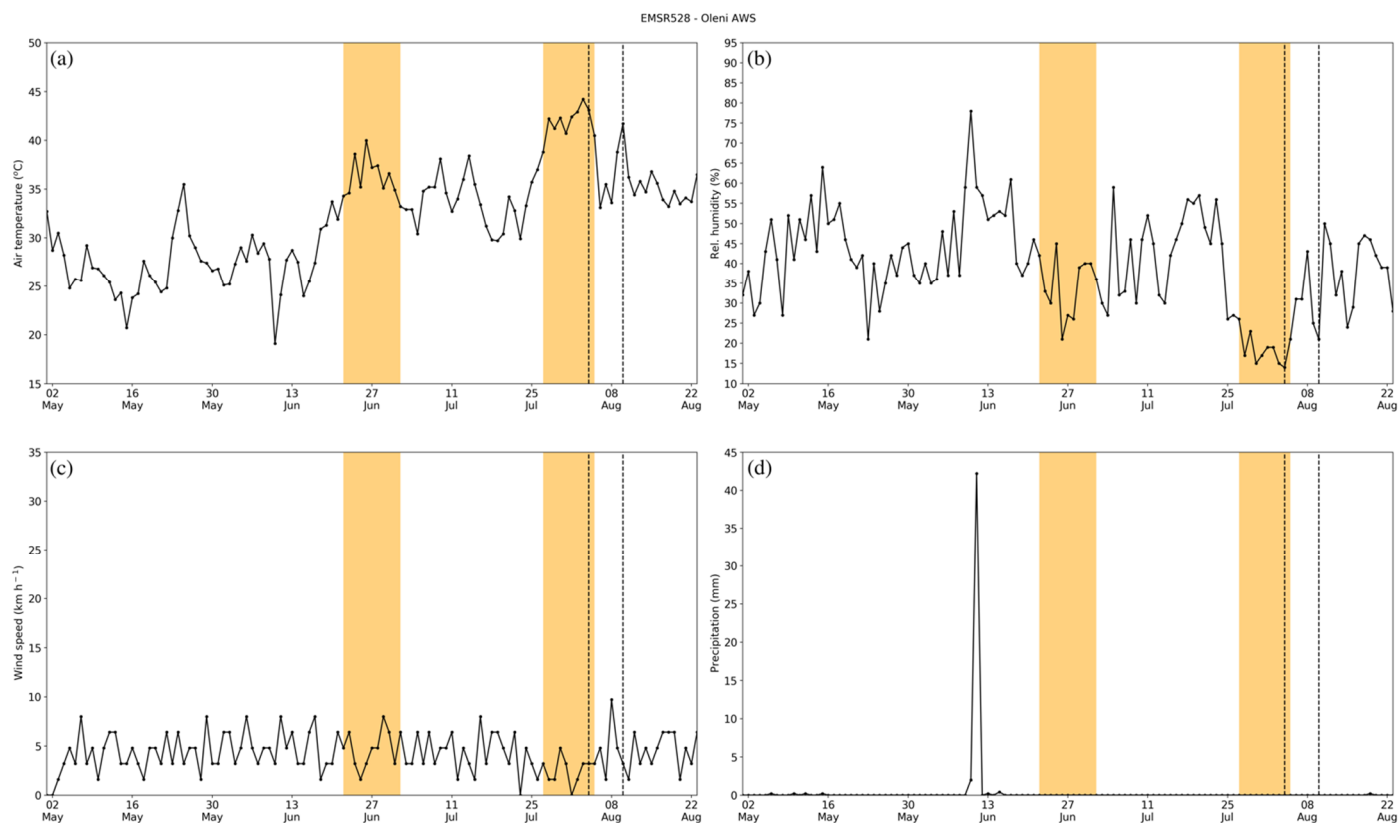
**Figure S1.** Time series of daily 12 UTC (a) air temperature, (b) relative humidity, (c) wind speed, and (d) accumulated precipitation over preceding 12 hours at the Tatoi AWS (EMSR527a). The yellow-shaded areas delineate heatwave periods.



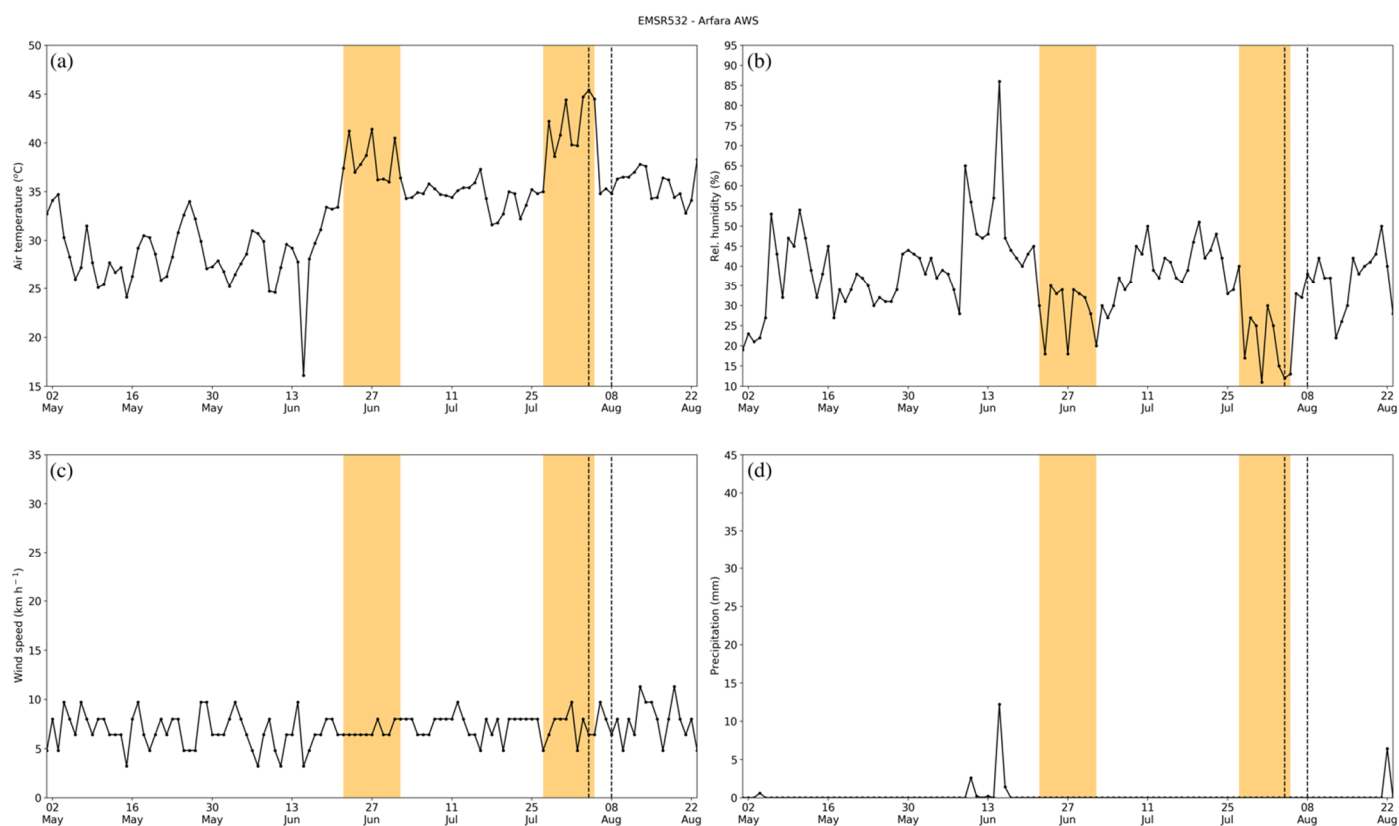
**Figure S2.** Same as Figure S1 but for the Vateri AWS (EMSR527b).



**Figure S3.** Same as Figure S1 but for the Oleni AWS (EMSR528).



**Figure S4.** Same as Figure S1 but for the Krokees AWS (EMSR531).



**Figure S5.** Same as Figure S1 but for the Arfara AWS (EMSR532).