

Supplementary Material

Quantitative and Qualitative Determination of Polyphenolic Compounds in *Castanea sativa* Leaves and Evaluation of Their Biological Activities

Natalia Żurek ¹, Agata Maria Pawłowska ¹, Karolina Pycia ¹, Leszek Potocki ² and Ireneusz Tomasz Kapusta ^{1,*}

¹ Department of Food Technology and Human Nutrition, College of Natural Sciences, University of Rzeszow, 4 Zelwerowicza St., 35-601 Rzeszow, Poland; nzurek@ur.edu.pl (N.Ż.); agpawlowska@ur.edu.pl (A.M.P.); kpycia@ur.edu.pl (K.P.)

² Department of Biotechnology, College of Natural Sciences, University of Rzeszow, 1 Pigonia St., 35-310 Rzeszow, Poland; lpotocki@ur.edu.pl

* Correspondence: ikapusta@ur.edu.pl; Tel.: +48-17-785-5238

Supplementary Table S1. Correlation between all parameters assessed for the *C. sativa* leaf methanolic extract.

Supplementary Figure S1. UPLC chromatogram of *C. sativa* leaf methanolic extracts.

Table S1. Correlation between all parameters assessed for the *C. sativa* leaf methanolic extract.

[illegible]

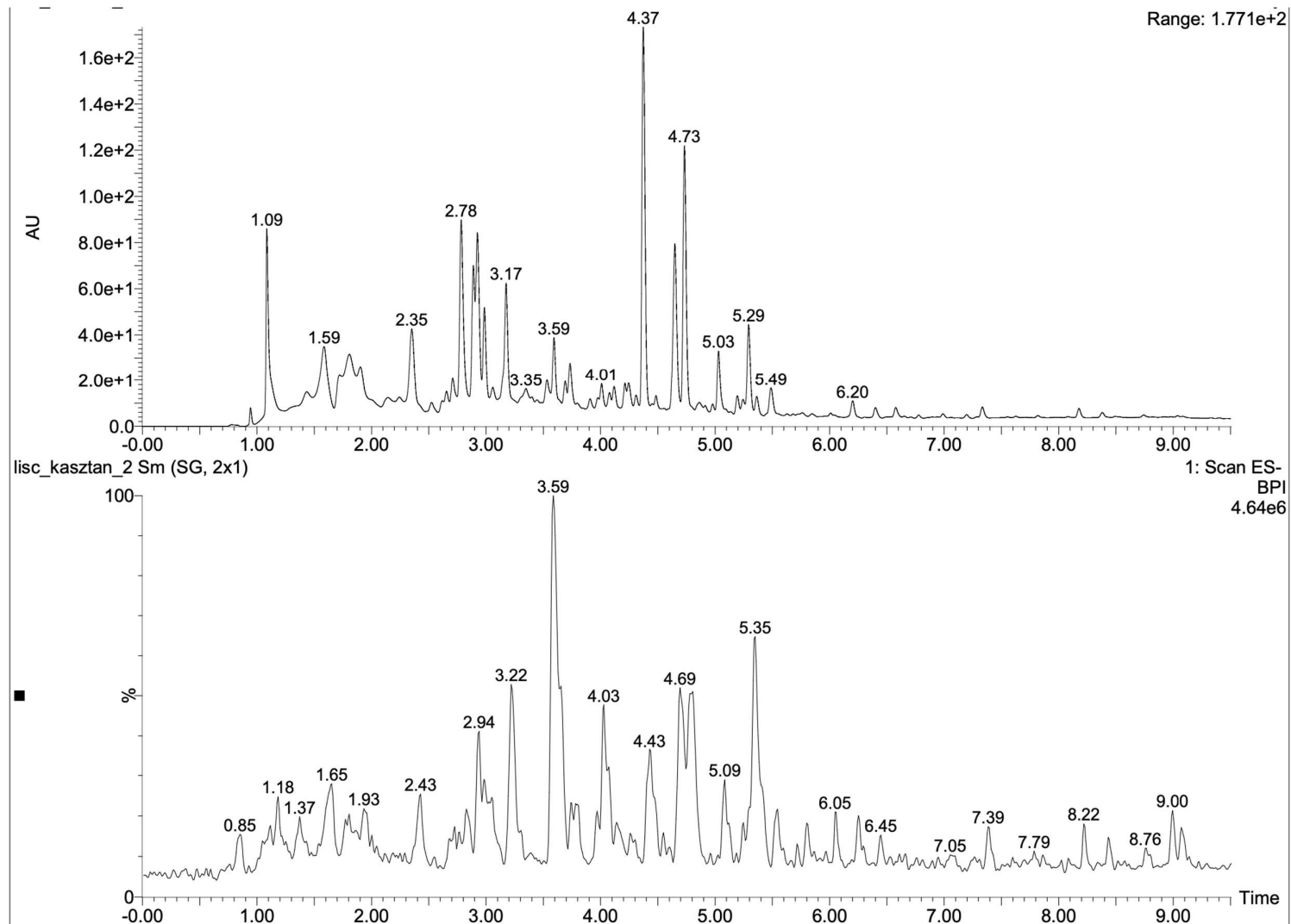


Figure S1. UPLC chromatogram of *C. sativa* leaf methanolic extracts (upper PDA, lower ESI-MS).