

Figure S1. Percent growth in pH 2 using percent area under the curve compared to matched controls by species (n=24). Significance was set at $P \leq 0.05$.



Figure S2. An example of a bile salt hydrolase activity positive *L. johnsonii* isolate with powdery halo (left) and a bile salt hydrolase activity negative *W. paramesenteroides* isolate (right).

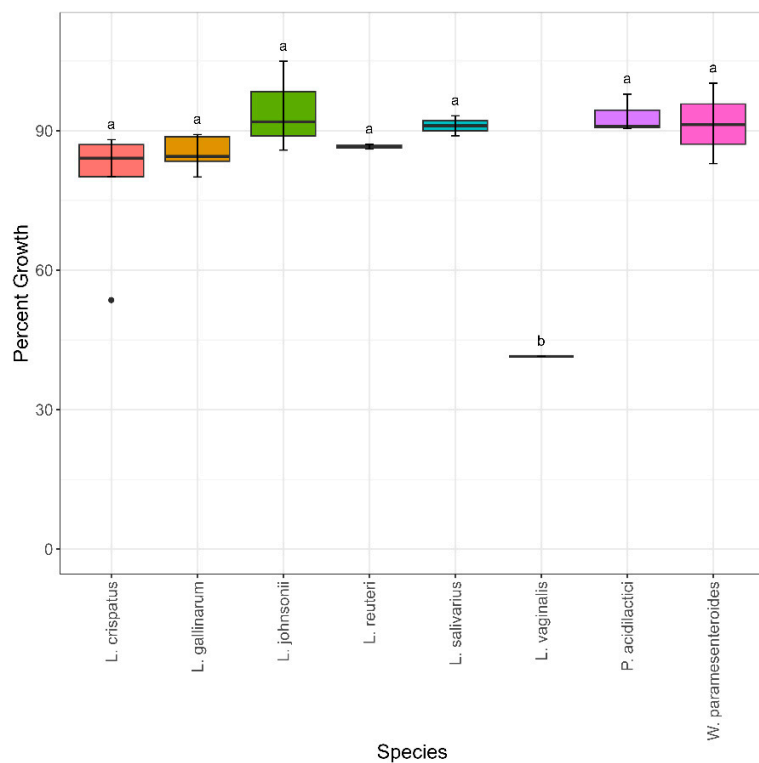


Figure S3. Percent growth using percent area under the curve compared to matched controls by species in 0.03% w/v n=24. Significant differences depicted with distinct letters. Significance was set at $P \leq 0.05$.

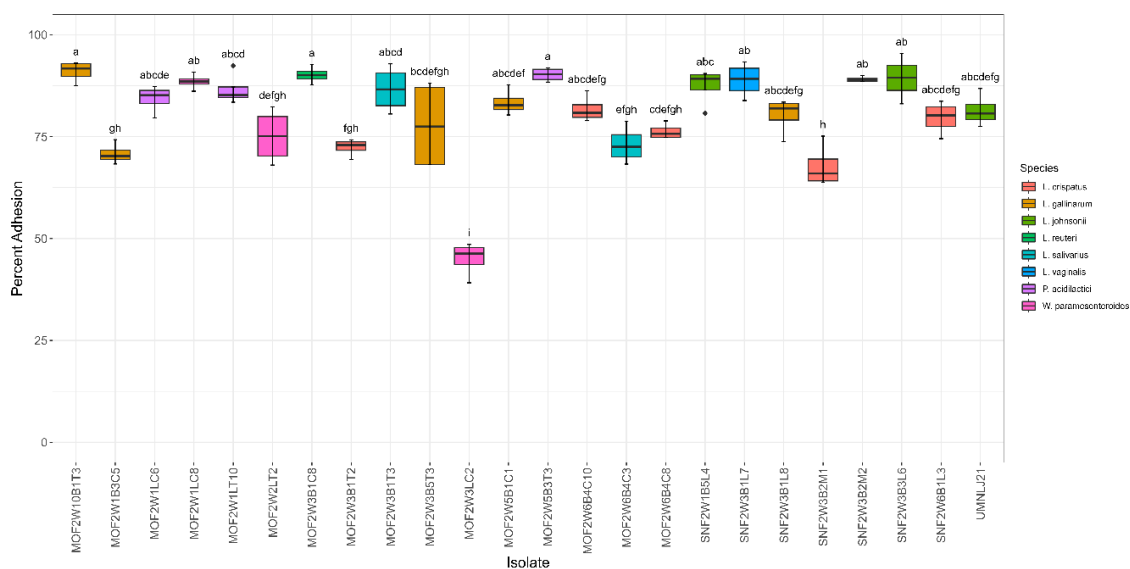


Figure S4. Percent of starting inoculum adhesion to BATC cells by individual isolate. Individual replicates of each isolate depicted. Four replicates of 24 isolates (n=96). Significant differences depicted with distinct letters. Significance was set at $P \leq 0.05$.