



Figure S1. Matrix difference t_2-t_1 of the first patient, and DMN and PN average connectivity. The box above encloses the DMN area, and the box below encloses the PN area; these average network connectivity values are specified.

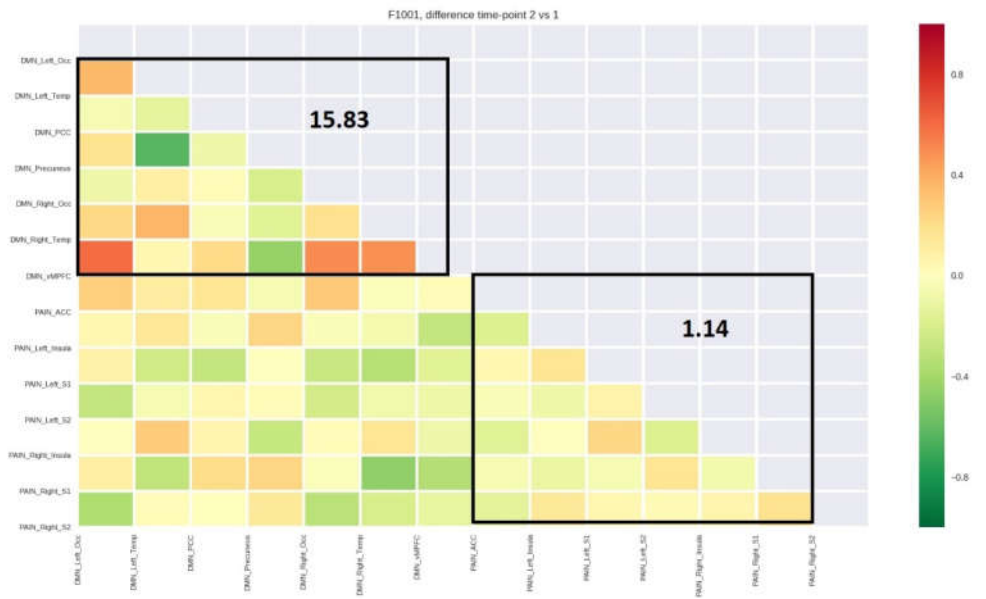


Figure S2. Matrix difference t_2-t_1 of the second patient, and DMN and PN average connectivity. The box above encloses the DMN area, and the box below encloses the PN area; these average network connectivity values are specified.



Figure S3. Matrix difference t2-t1 of the third patient, and DMN and PN average connectivity. The box above encloses the DMN area, and the box below encloses the PN area; these average network connectivity values are specified.

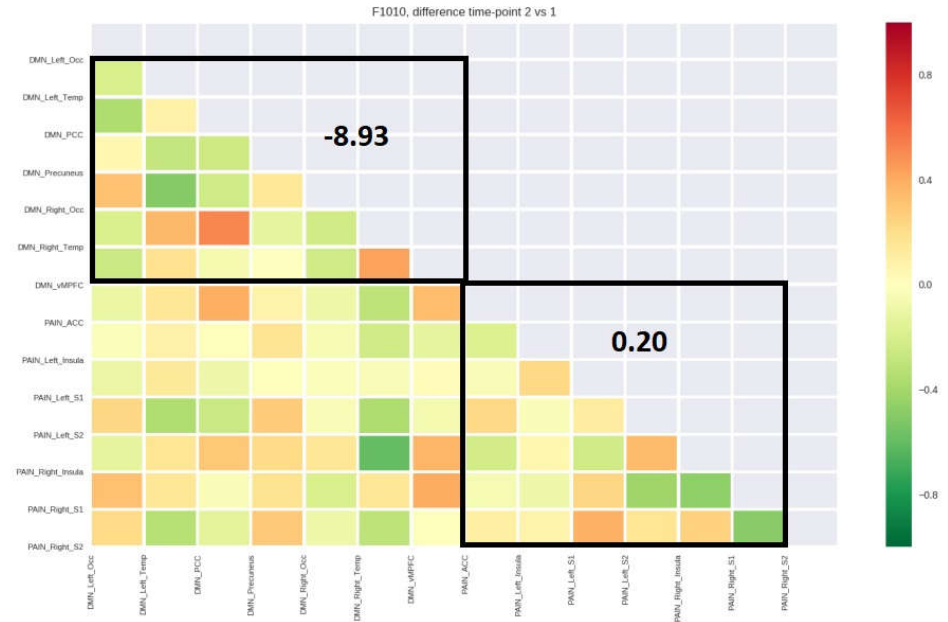


Figure S4. Matrix difference t2-t1 of the fourth patient, and DMN and PN average connectivity. The box above encloses the DMN area, and the box below encloses the PN area; these average network connectivity values are specified.

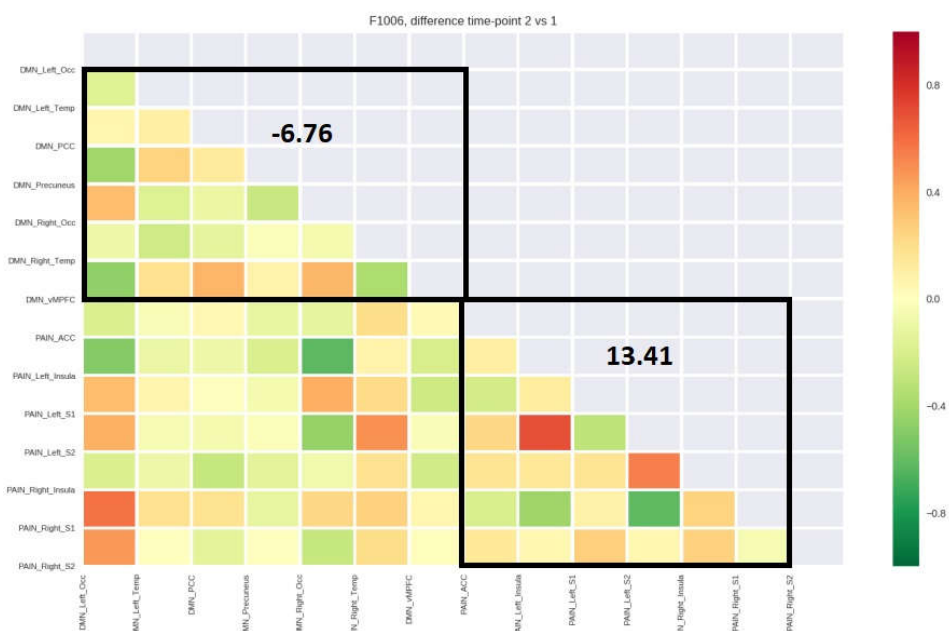


Figure S5. Matrix difference t2-t1 of the fifth patient, and DMN and PN average connectivity. The box above encloses the DMN area, and the box below encloses the PN area; these average network connectivity values are specified.

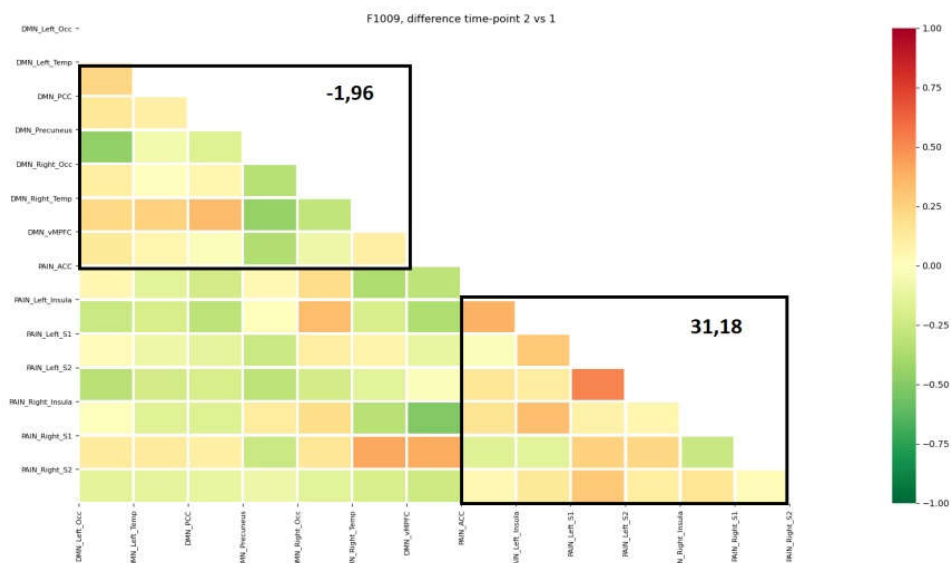


Figure S6. Matrix difference t2-t1 of the sixth patient, and DMN and PN average connectivity. The box above encloses the DMN area, and the box below encloses the PN area; these average network connectivity values are specified.

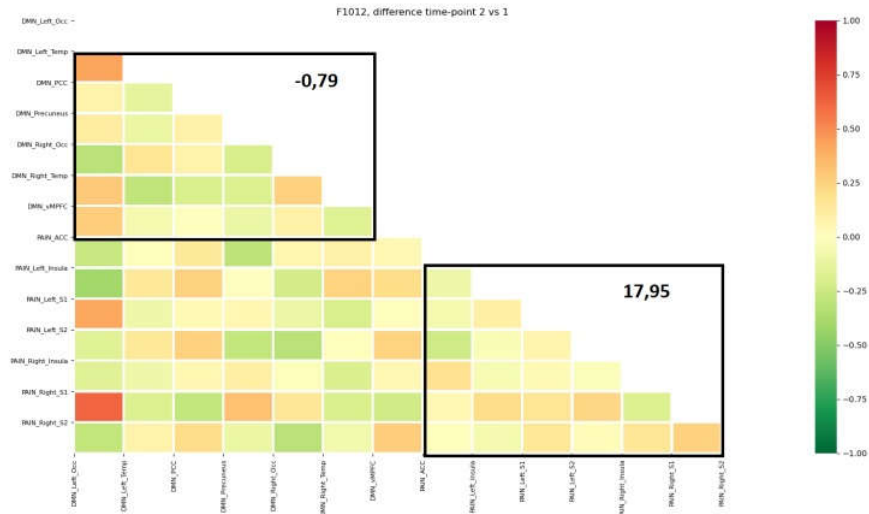


Figure S7. Matrix difference t_2-t_1 of the seventh patient, and DMN and PN average connectivity. The box above encloses the DMN area, and the box below encloses the PN area; these average network connectivity values are specified.

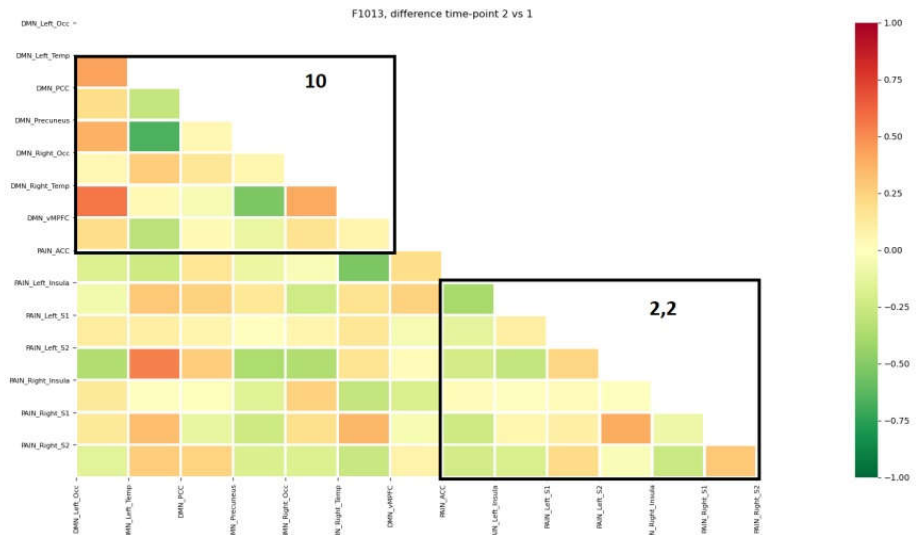


Figure S8. Matrix difference t_2-t_1 of the eighth patient, and DMN and PN average connectivity. The box above encloses the DMN area, and the box below encloses the PN area; these average network connectivity values are specified.

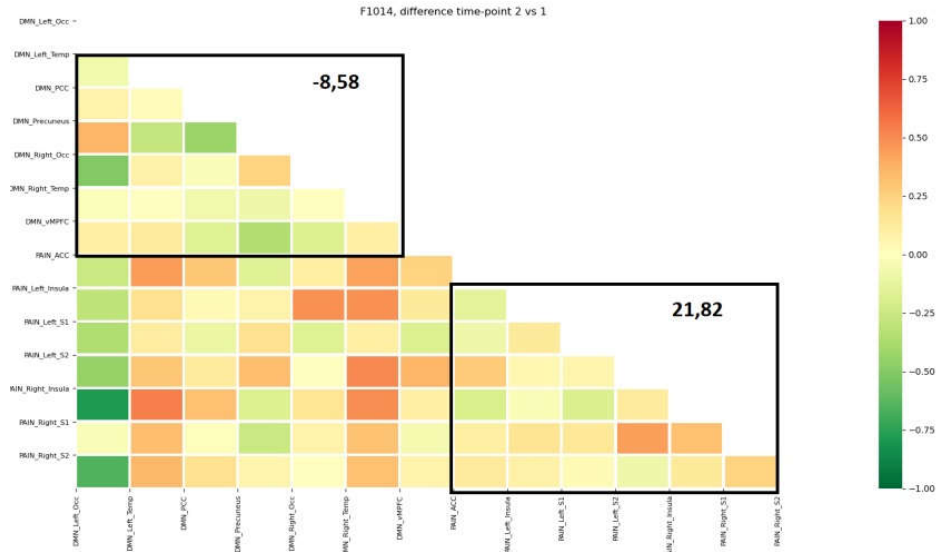


Figure S9. Matrix difference t2-t1 of the ninth patient, and DMN and PN average connectivity. The box above encloses the DMN area, and the box below encloses the PN area; these average network connectivity values are specified.

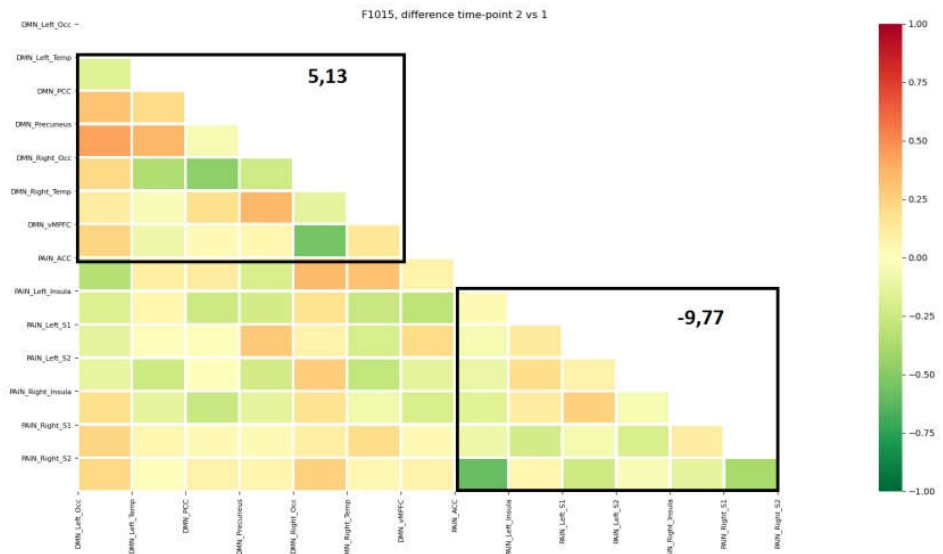


Figure S10. Matrix difference t_2-t_1 of the tenth patient, and DMN and PN average connectivity. The box above encloses the DMN area, and the box below encloses the PN area; these average network connectivity values are specified.