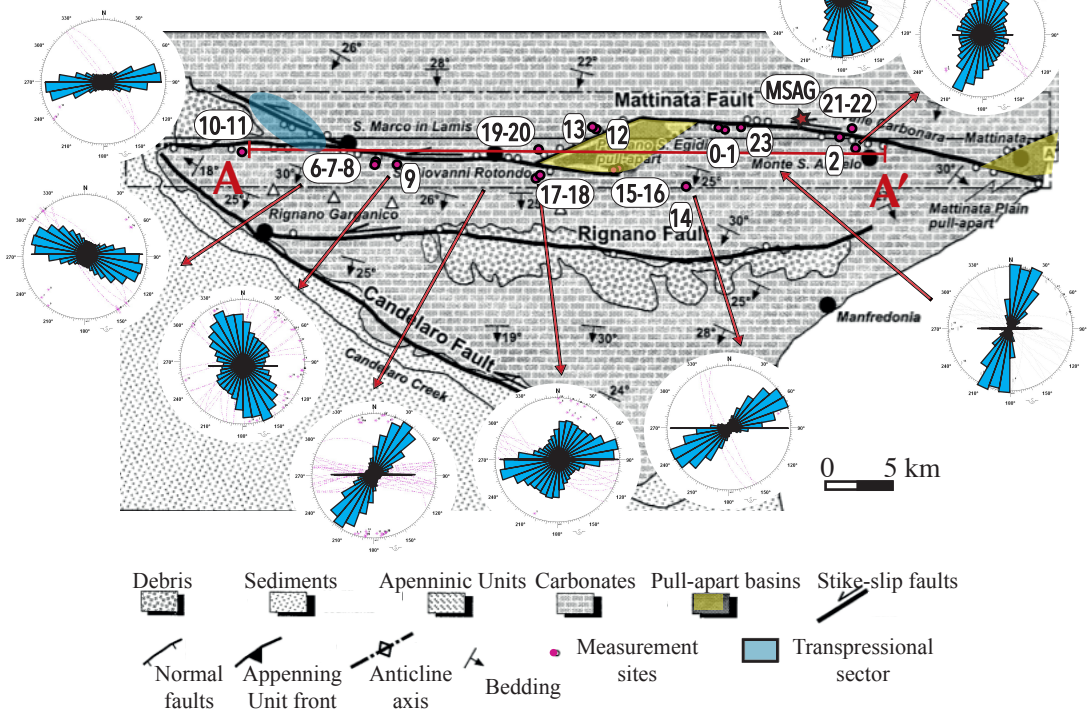
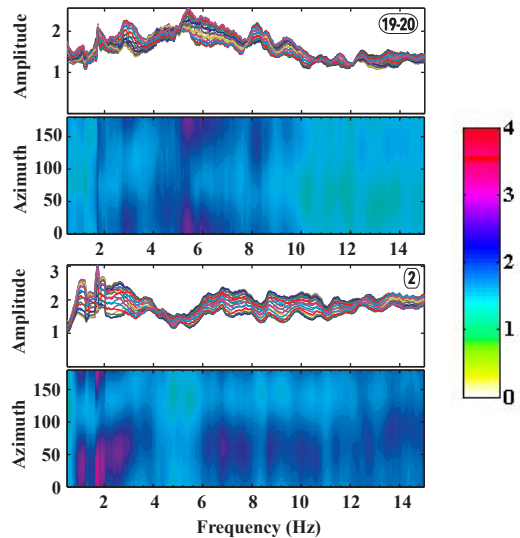
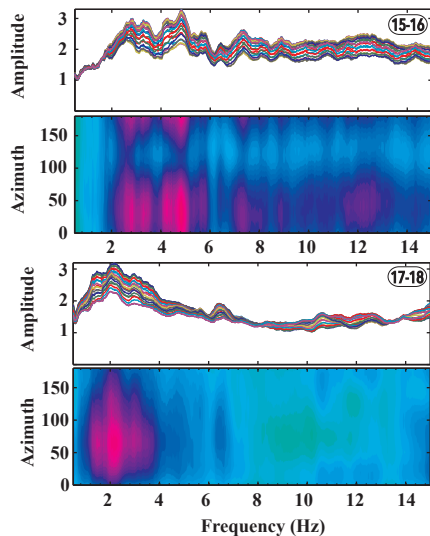
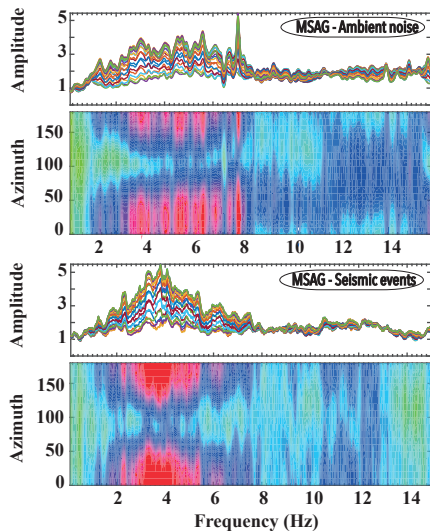


THE MATTINATA FAULT

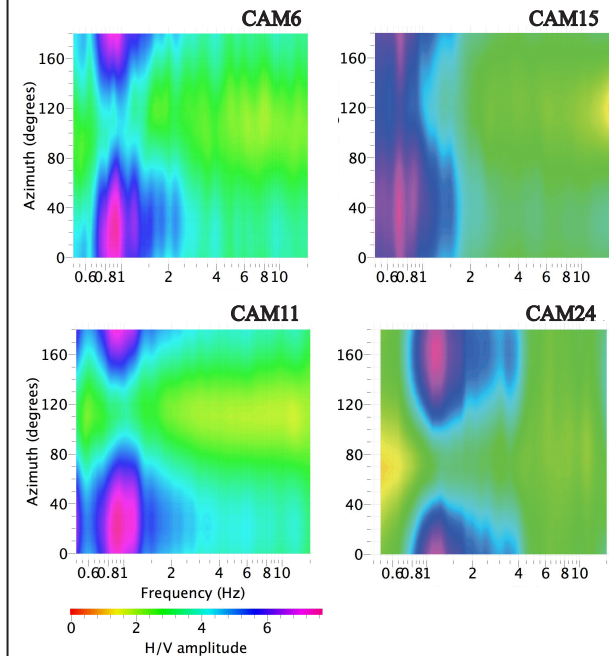
GROUND MOTION POLARIZATION



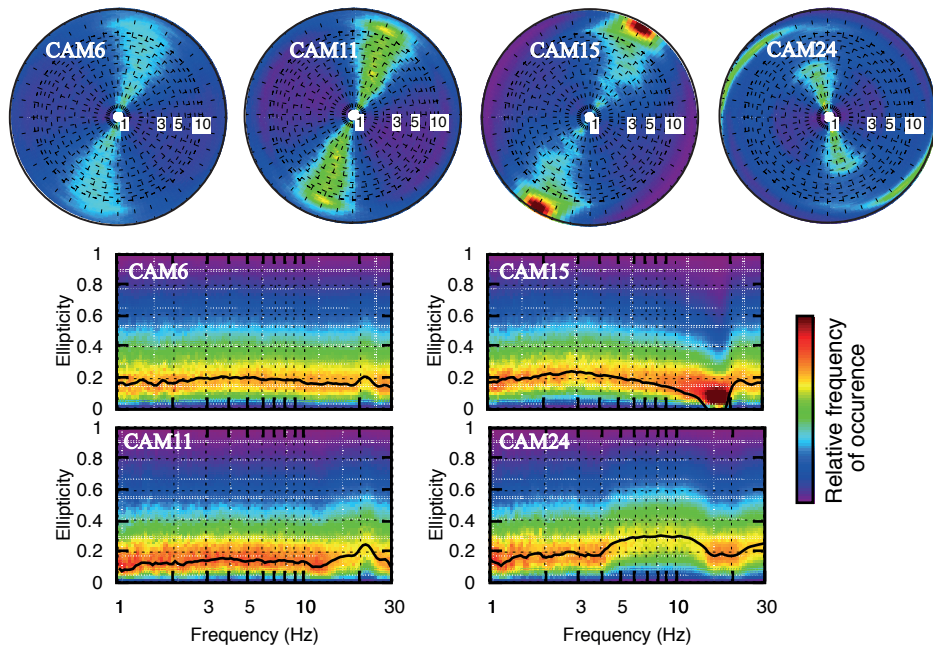


CAMPO IMPERATORE FAULT

HV SPECTRAL RATIOS



TIME-FREQUENCY POLARIZATION ANALYSIS



#EventID	Date/Time	Latitude	Longitude	Depth (km)	Magnitude	MagType	ND1	ND2	ND3	ND4	ND5	ND6	ND7	NDR	C002	C015	C030	C048	C060	CSU1
2854572	06/09/08 04:00	37.7772	-121.9809	3.9	3.3	MS	*	*	*	*	*	*	*	*						*
2857185	10/10/08 23:19	37.837	-122.215	12.7	3.1	ML	*	*	*			*	*							*
2859900	10/11/08 19:56	37.434	-121.775	10.0	3.2	MW	*	*	*	*	*	*	*	*						*
2861931	09/12/08 16:25	37.484	-121.809	6.1	3.5	ML	*	*	*	*	*	*	*	*						*
2862866	21/12/08 17:35	36.6736	-121.357	10.9	3.7	mb	*	*	*	*	*	*	*	*						*
2862878	21/12/08 20:09	36.677	-121.304	6.5	3.6	MW			*			*								*
2866035	15/02/09 22:05	36.862	-121.597	6.7	3.3	ML			*			*								*
2866271	21/02/09 19:01	37.626	-121.95	11.8	3.2	ML	*	*	*	*	*	*	*							*
3604803	26/02/09 16:08	36.863	-121.599	6.7	3.2	ML	*	*	*		*	*	*							*
2866791	08/03/09 14:47	37.4656	-121.8199	0.3	3.5	MW	*	*	*	*	*	*	*							*
3638994	18/03/09 02:26	37.458	-121.77	7.9	3.1	ML			*			*								*
2842899	07/01/10 18:09	37.3802	-121.9062	10.0	4.2	mb	*	*	*	*	*	*	*	*	*	*	*			*
2846204	07/03/10 06:14	36.8039	-121.5507	11.5	3.6	MW		*	*	*		*	*		*		*			
2873823	12/06/10 06:05	36.8154	-121.7236	12.0	3.6	MW	*	*	*		*	*			*					
2877967	10/08/10 00:51	36.903	-121.6506	9.6	4.3	mb	*	*		*	*	*		*	*	*				
3202945	15/10/10 11:04	37.88	-121.388	14.7	3.6	ml				*	*	*			*	*	*			
3275752	08/01/11 00:10	37.1945	-121.8403	16.0	4.2	mb	*	*		*	*	*		*	*	*	*			
3278598	12/01/11 08:51	36.6609	-121.5355	10.0	4.6	mb	*	*		*	*	*		*	*	*	*			
3276247	13/01/11 03:54	36.802	-121.54	7.4	3.7	MW	*	*							*	*	*			
3275806	13/01/11 04:00	36.68	-121.775	5.4	3.9	MW				*	*	*		*	*	*	*			
3317197	06/07/11 07:18	36.6044	-121.4418	15.9	3.8	MW									*	*				
3323648	24/08/11 06:36	37.7364	-122.1739	10.1	3.6	MW	*	*	*	*	*	*	*	*	*	*	*			*
3321093	27/08/11 07:18	36.5517	-121.2362	12.1	4.8	MW	*	*	*	*	*	*	*	*			*			
8891660	29/10/12 04:25	36.5784	-121.1928	10.0	3.8	mb	*	*		*		*	*	*			*			
9119547	28/06/13 03:52	36.7302	-121.3996	10.0	3.9	ML									*	*		*	*	
4523848	02/12/13 10:05	36.9315	-121.6172	13.7	3.8	ML									*	*			*	
4807547	09/09/14 18:17	36.6455	-121.3718	13.6	3.8	ML														
4815431	20/11/14 06:26	36.7774	-121.6	5.8	4.0	mb									*	*		*	*	
10493684	06/12/14 02:16	36.7965	-121.5122	8.0	3.9	Mwr									*	*		*	*	
5153257	21/07/15 09:41	37.5358	-121.9993	11.1	4.2	mb									*	*		*		
5188209	18/07/16 05:53	36.689833	-121.32517	4.9	3.8	mw												*		
10045822	31/03/17 10:55	36.877667	-121.61417	6.2	4.0	Mw												*		
10412386	10/10/17 00:53	37.3135	-121.672	9.7	4.1	mw									*	*		*		
10598569	27/12/17 06:32	37.3965	-121.74683	10.6	3.8	Mwr									*	*				
10728437	16/04/18 16:39	37.434667	-121.773	9.3	3.8	Mwr									*	*		*		
10955894	05/10/18 13:29	36.753333	-121.35367	11.4	3.8	mw										*				
11076275	16/07/19 20:11	37.818667	-121.75683	12.4	4.3	Mw									*	*				
11131881	15/10/19 05:33	37.938	-122.057	14.0	4.5	Mwr									*	*				