

Supplementary Materials

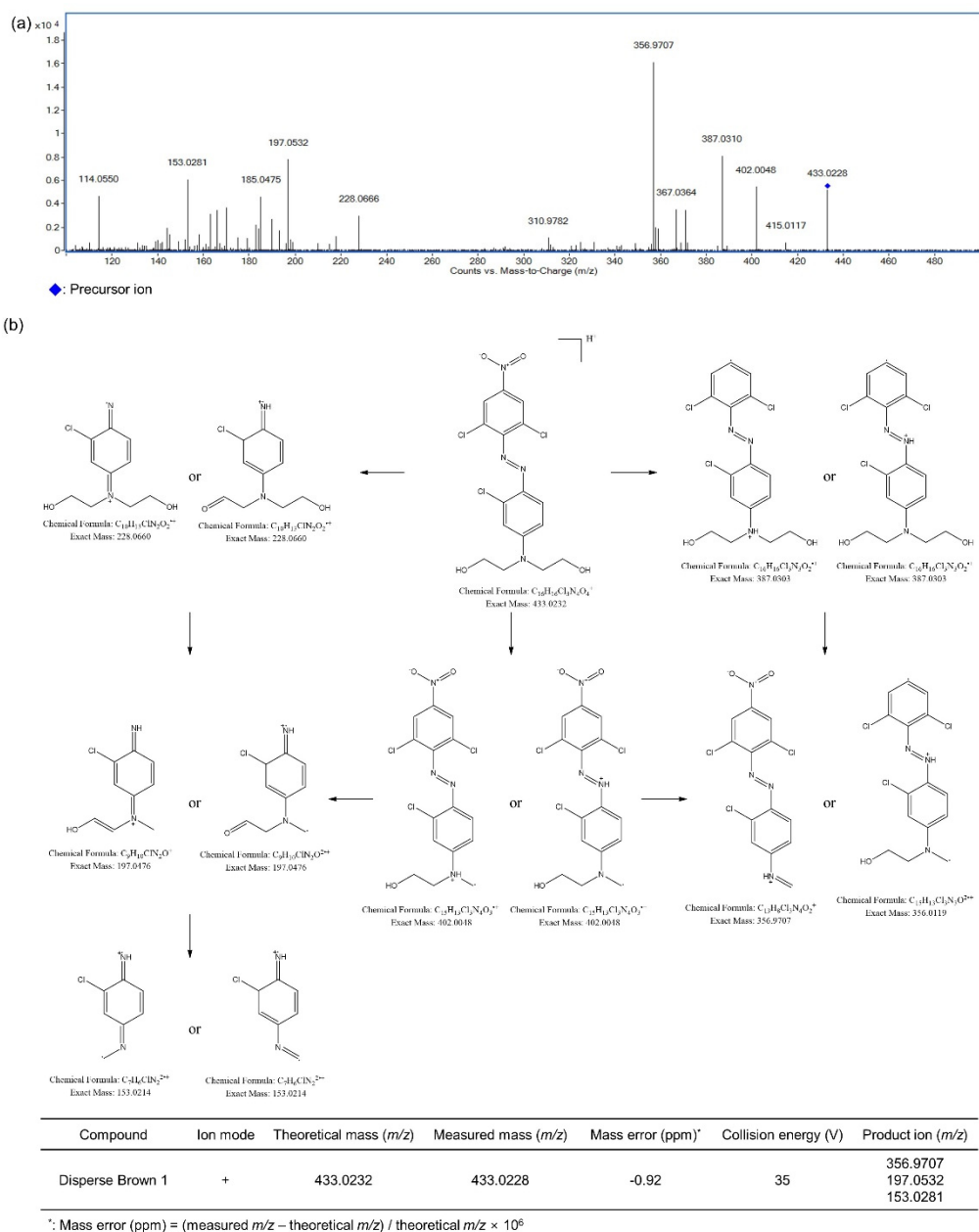


Figure S1. Optimized MS/MS spectrum (a) and proposed fragmentation pattern of Disperse Brown 1 (b) by LC-Q-TOF-MS

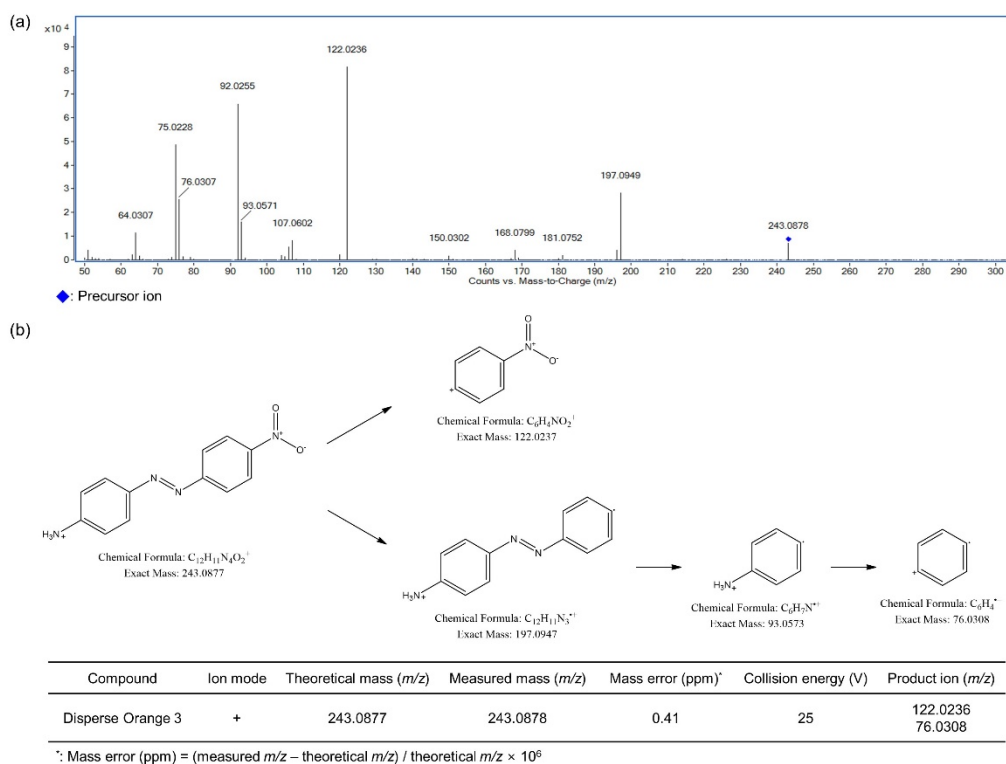


Figure S2. Optimized MS/MS spectrum (a) and proposed fragmentation pattern of Disperse Orange 3 (b) by LC-Q-TOF-MS

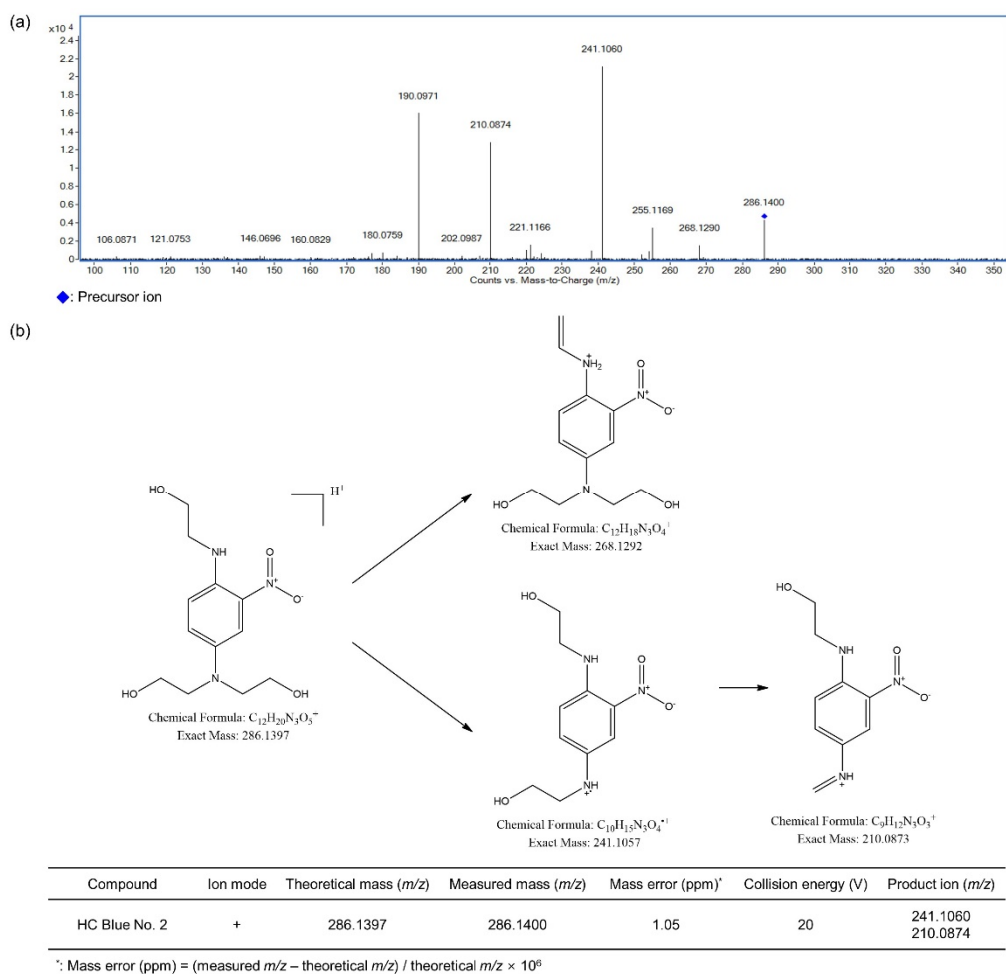


Figure S3. Optimized MS/MS spectrum (a) and proposed fragmentation pattern of HC Blue No. 2 (b) by LC-Q-TOF-MS

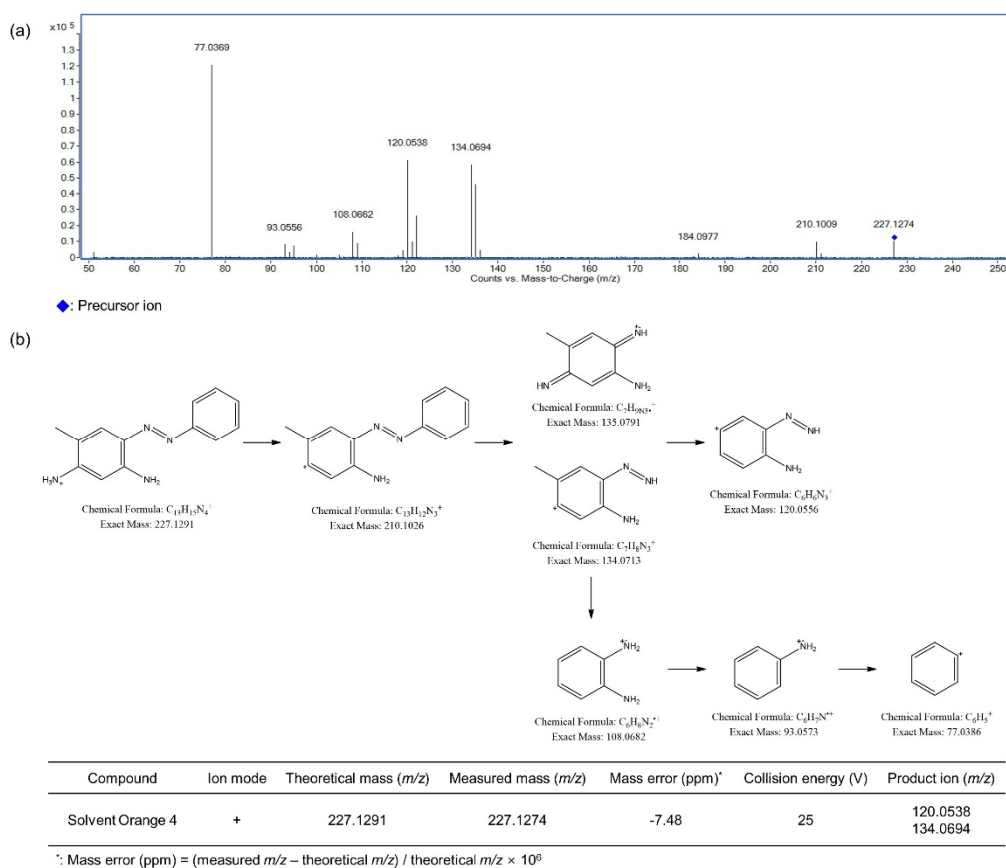


Figure S4. Optimized MS/MS spectrum (a) and proposed fragmentation pattern of Solvent Orange 4 (b) by LC-Q-TOF-MS

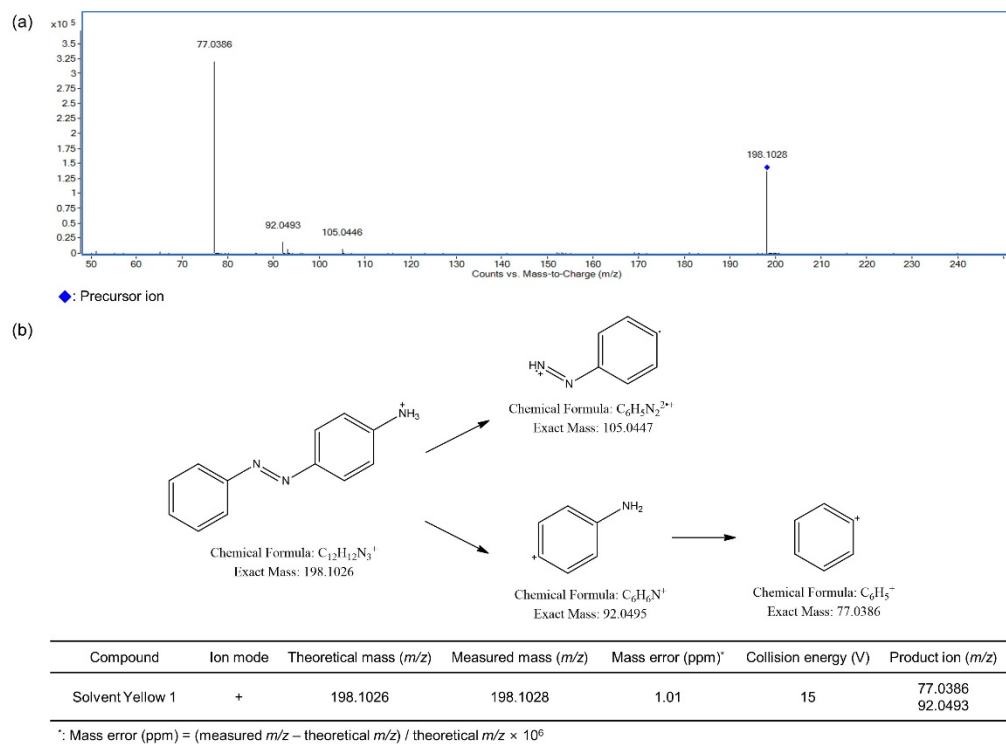


Figure S5. Optimized MS/MS spectrum (a) and proposed fragmentation pattern of Solvent Yellow 1 (b) by LC-Q-TOF-MS

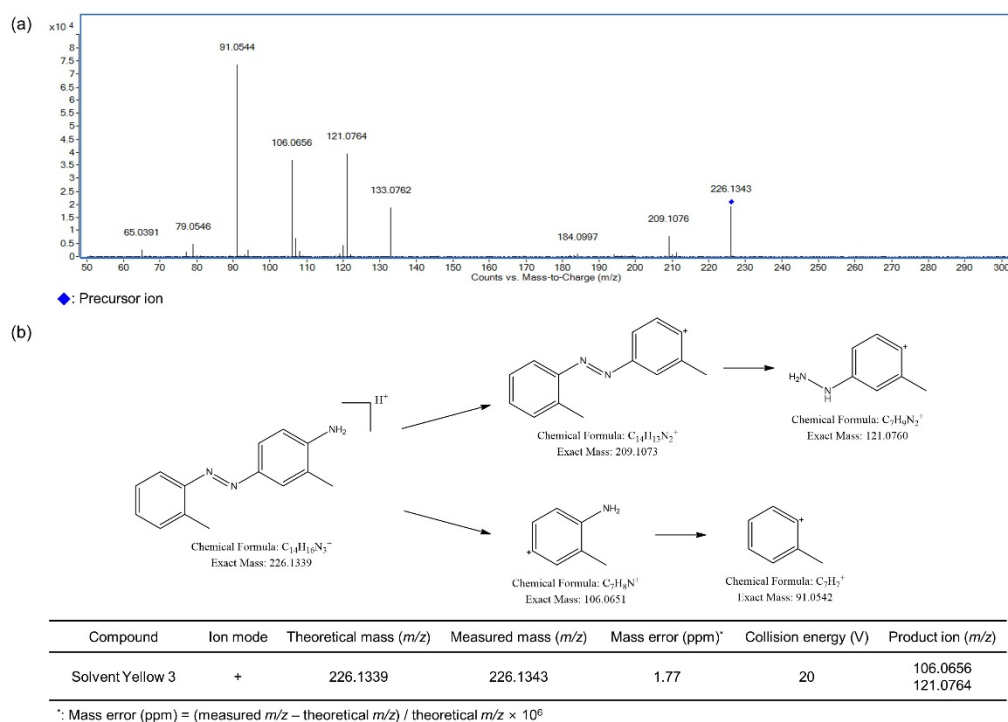


Figure S6. Optimized MS/MS spectrum (a) and proposed fragmentation pattern of Solvent Yellow 3 (b) by LC-Q-TOF-MS

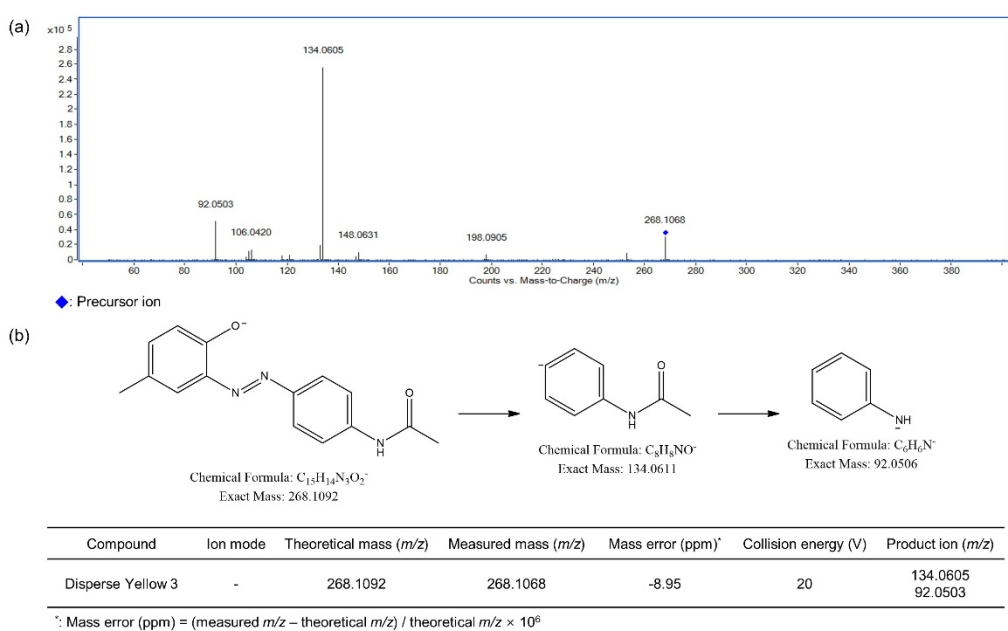


Figure S7. Optimized MS/MS spectrum (a) and proposed fragmentation pattern of Disperse Yellow 3 (b) by LC-Q-TOF-MS

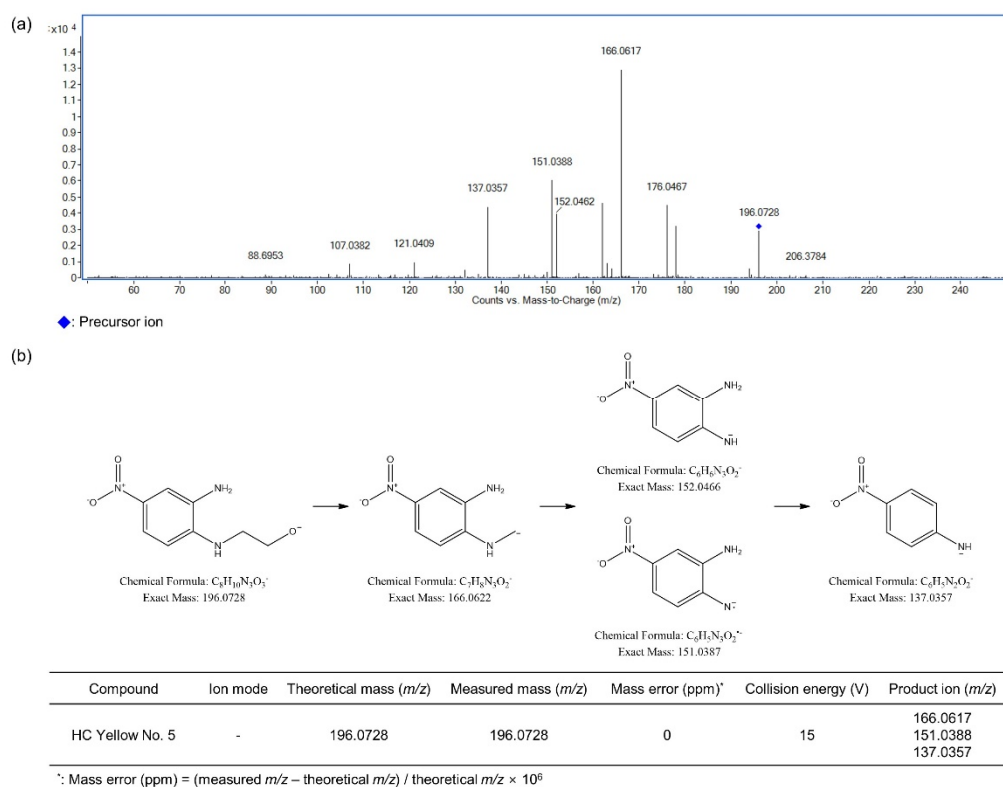


Figure S8. Optimized MS/MS spectrum (a) and proposed fragmentation pattern of HC Yellow No. 5 (b) by LC-Q-TOF-MS

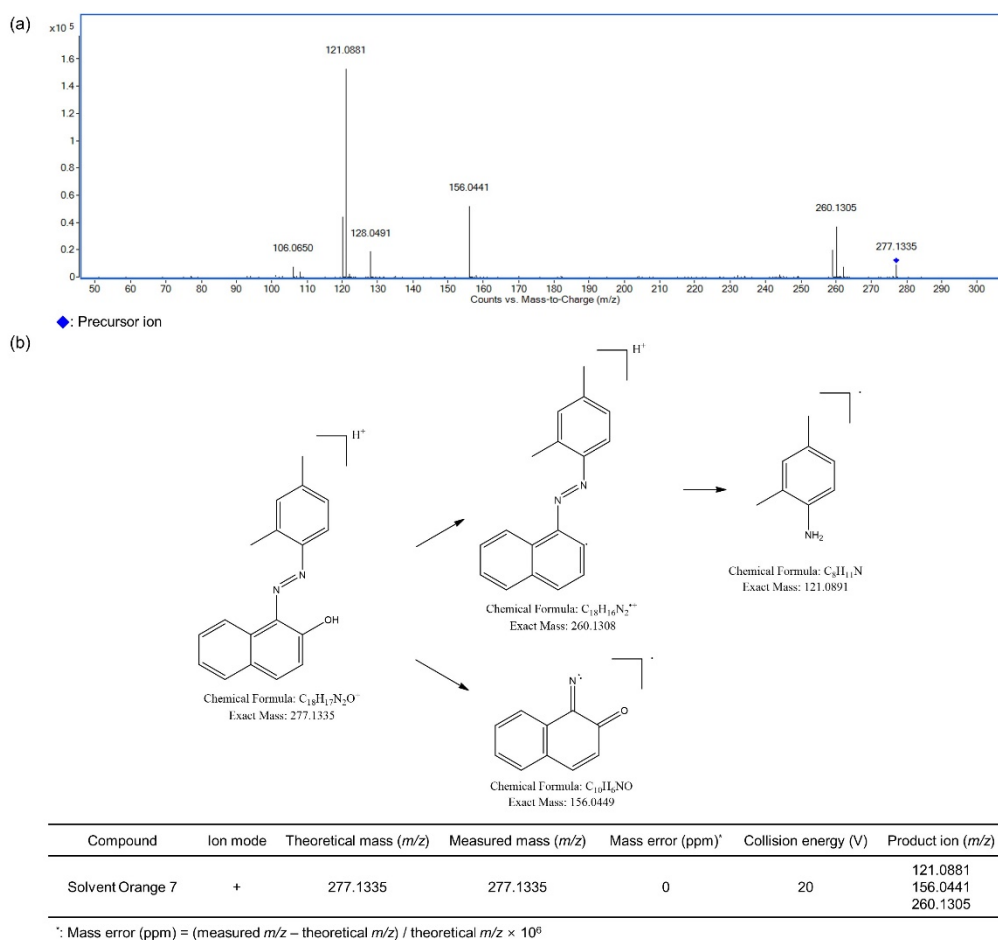


Figure S9. Optimized MS/MS spectrum (a) and proposed fragmentation pattern of Solvent Orange 7 (b) by LC-Q-TOF-MS

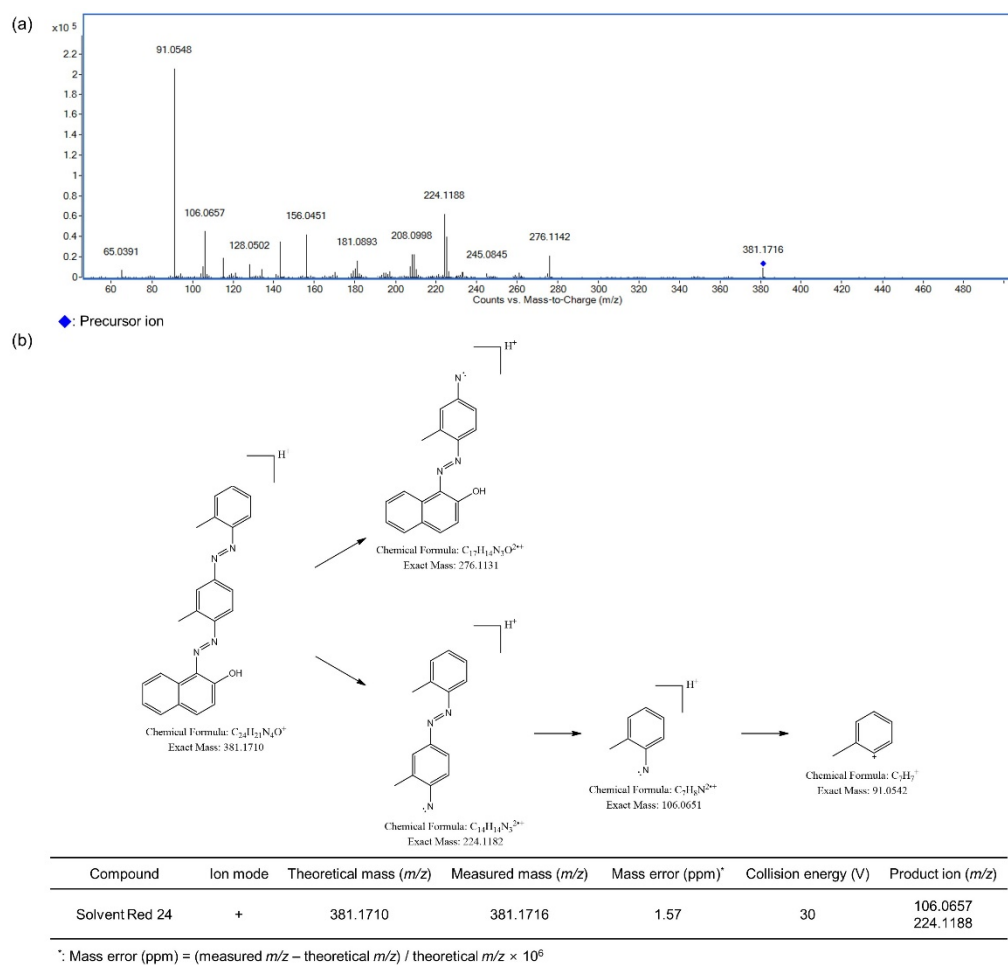


Figure S10. Optimized MS/MS spectrum (a) and proposed fragmentation pattern of Solvent Red 24 (b) by LC-Q-TOF-MS