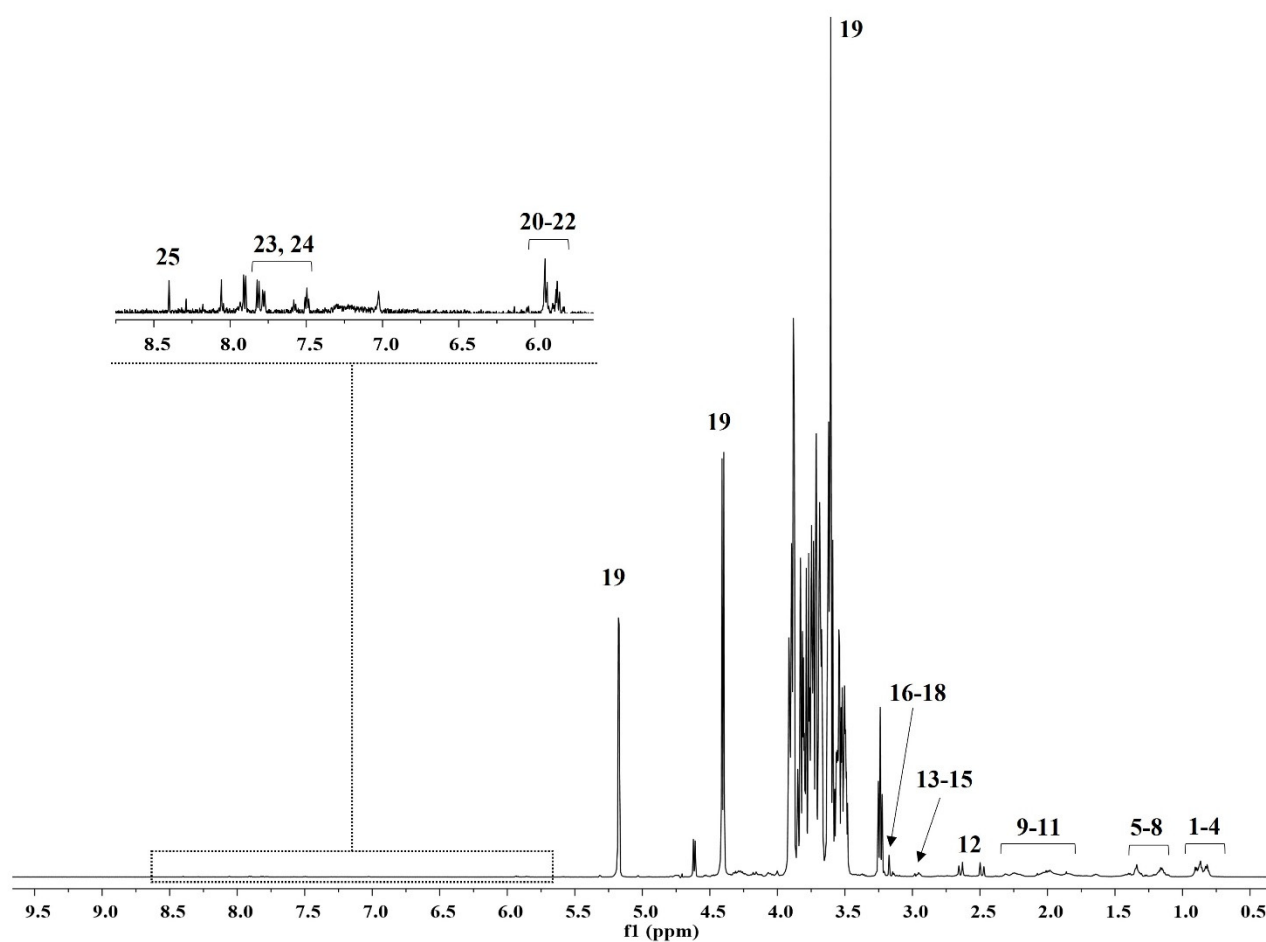


# Development and chemico-physical characterization of ovine milk-based ingredients for infant formulae

G.Lai et al.



**Figure S1.** Peaks assignment of a representative <sup>1</sup>H NMR spectrum of IF1. Peaks: 1, Leucine; 2, Isoleucine; 3, Valine; 4, Pantothenate; 5, Alanine; 6, Threonine; 7, Caprylate; 8, Fucose; 9, Glutamate; 10, Proline; 11, Acetate; 12, Citrate; 13, Lysine; 14, Creatine; 15, Anserine; 16, Choline; 17, O-Phosphocholine; 18, sn-Glycero-3-phosphocholine; 19, Lactose; 20, UDP-N-Acetylglucosamine; 21, UDP-galactose; 22, UDP-glucose; 23, Hippurate; 24, Uridine; 25, Formate.

**Table S1.** Linear range (LR) of the calibration curves used to quantify the investigated fatty acids.

<b>Fatty acids</b>	<b>LR (mg g<sub>fat</sub><sup>-1</sup>)</b>
C4:0	20.6 - 411
C6:0	21.8 - 436
C8:0	20.4 - 407
C10:0	20 - 401
C12:0	20.1 - 402
C14:0	20 - 401
C16:0	20 - 401
C18:0	20.1 - 402
C18:1 11 <i>trans</i>	28.4 - 402
C18:1 9 <i>cis</i>	20.1 - 401
C18:2 9 <i>cis</i> 12 <i>cis</i>	10.8 - 100
C18:3 9 <i>cis</i> 12 <i>cis</i> 15 <i>cis</i>	10.4 - 209
CLA 9 <i>cis</i> 11 <i>trans</i>	2.5 - 50