

Supplementary Materials: The Structural Characteristics of Collagen in Swim Bladders with 25-Year Sequence Aging: The Impact of Age

Xiaofeng He, Liling Xie, Xiaoshan Zhang, Fan Lin, Xiaobo Wen and Bo Teng

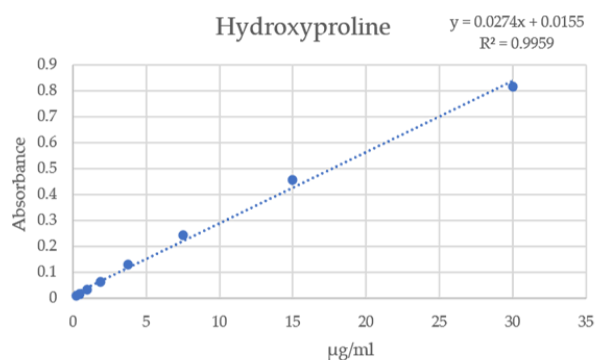
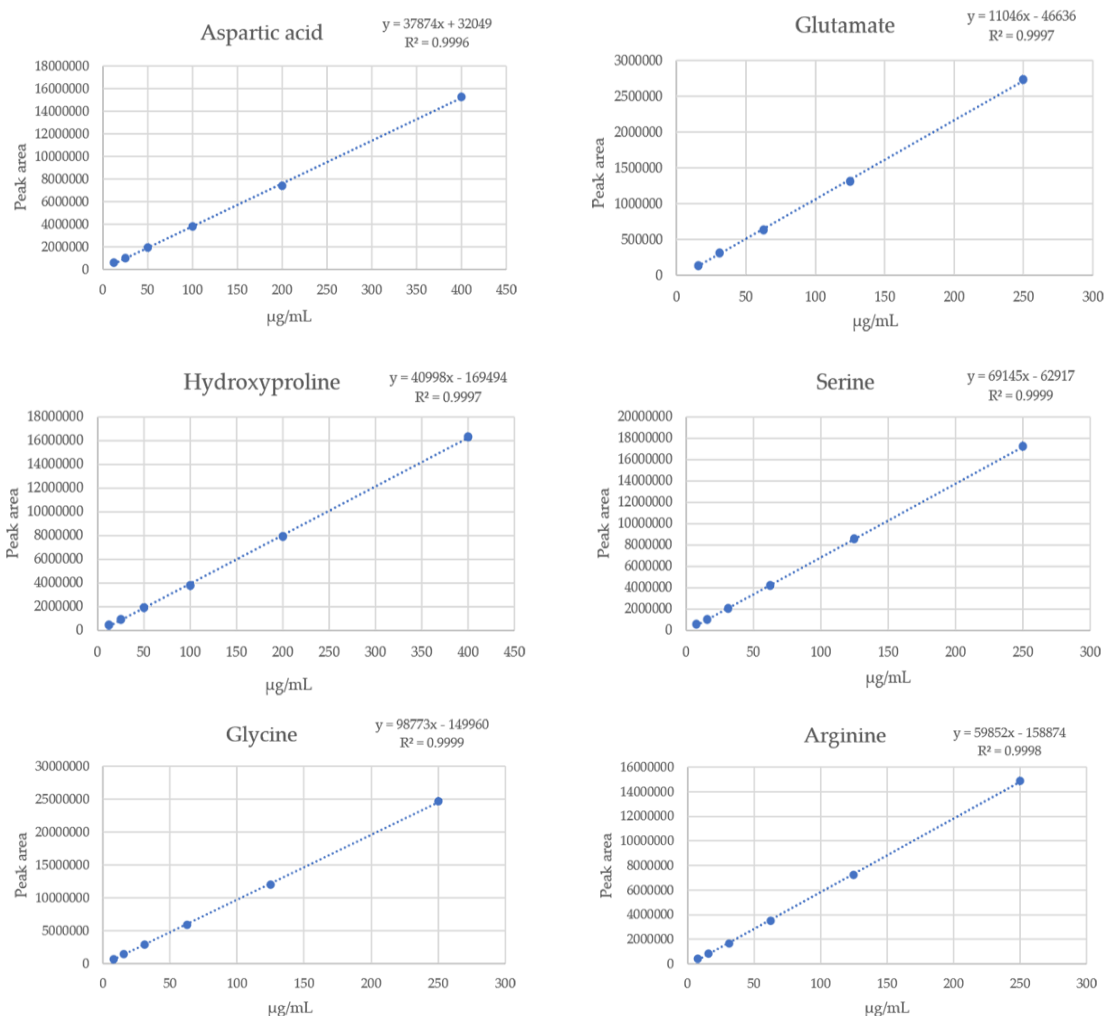


Figure S1. Standard curve used to calculate hydroxyproline concentration which was used to calculate the collagen concentration.



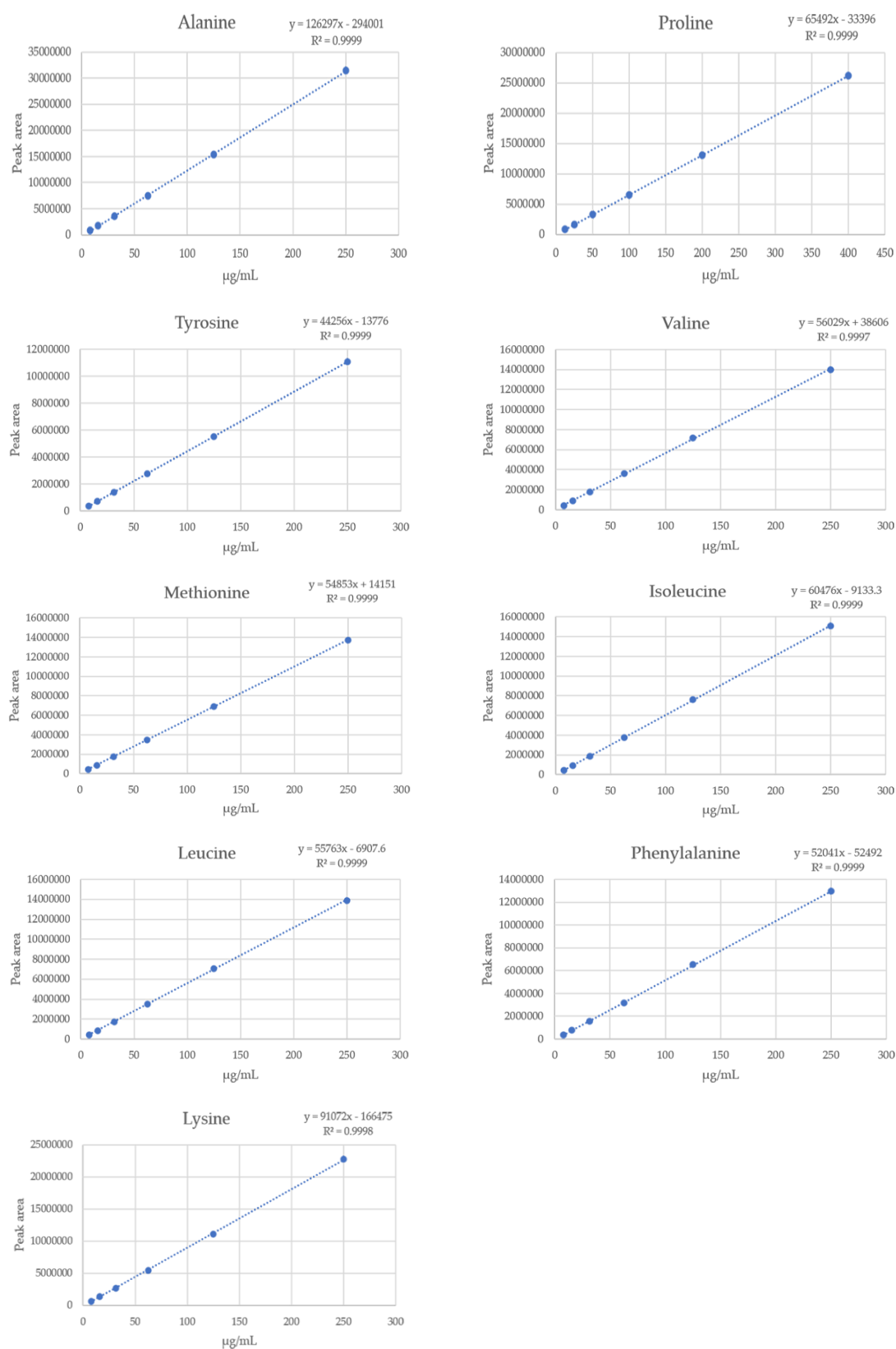


Figure S2. Standard curves used to calculate the individual amino acid concentrations through HPLC.

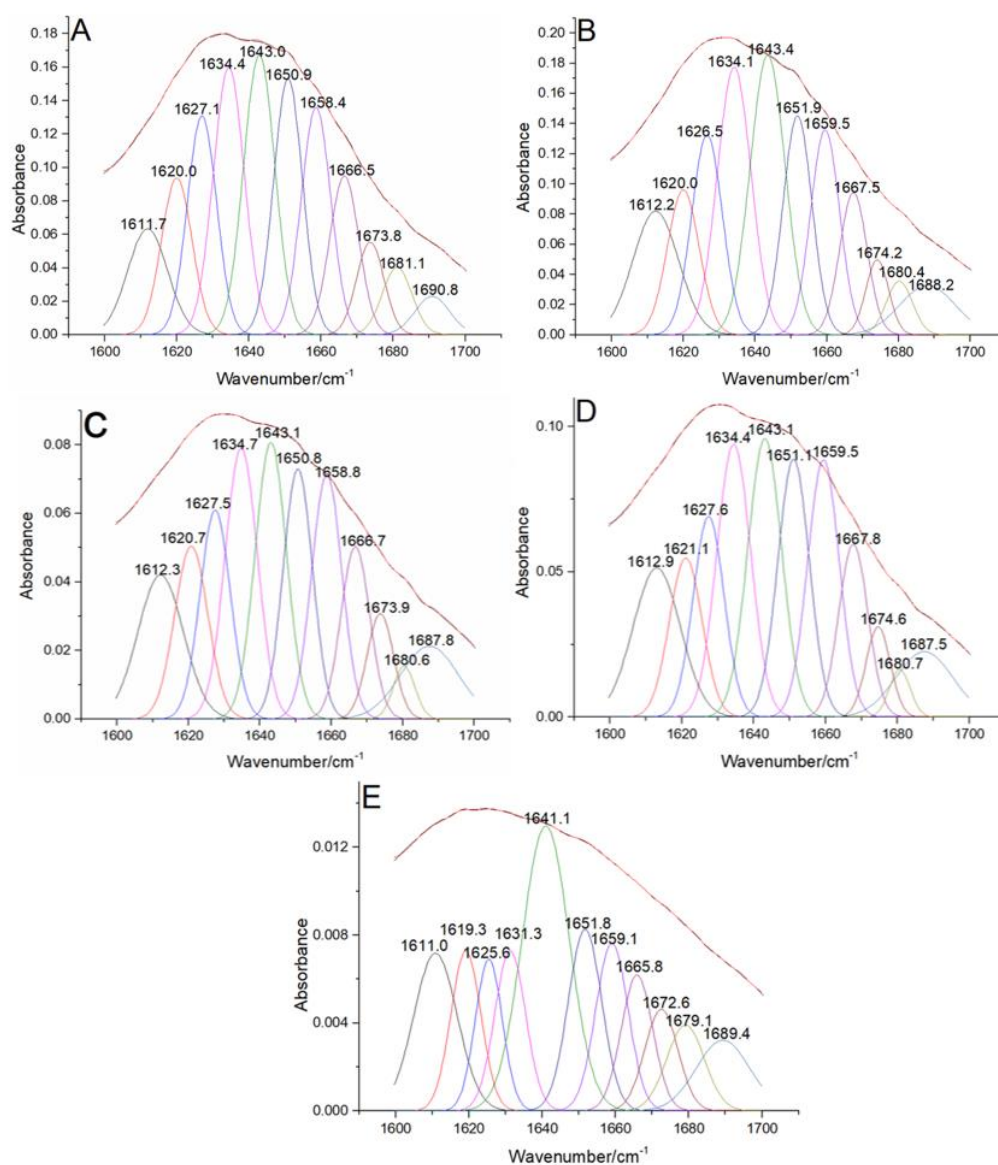


Figure S3: The Gaussian/Lorentz functions fitted amid I band (1600-1700cm⁻¹) on ART-FTIR spectrum. Data were collected from FSB (A), 1-YSB (B), 5-YSB (C), 25-YSB (D) and TDSB (E).