

SUPPLEMENTARY MATERIALS

Bipiperidinyl Derivatives of Cannabidiol Enhance Its Antiproliferative Effects in Melanoma Cells

Peihong Lyu ^{1,2}, Huifang Li ¹, Junzhao Wan ³, Ying Chen ^{1,4}, Zhen Zhang ⁵, Panpan Wu ⁵, Yinsheng Wan ⁶, Navindra P. Seeram ¹, Jean Christopher Chamcheu ^{7,8}, Chang Liu ¹, and Hang Ma ^{1*}

¹ Bioactive Botanical Research Laboratory, Department of Biomedical and Pharmaceutical Sciences, College of Pharmacy, University of Rhode Island, Kingston, RI 02881, USA

² Department of Dermatology, Affiliated Hospital of Guizhou Medical University, Guiyang, Guizhou 550001, China

³ School of Pharmacy, Guizhou Medical University, Guiyang, Guizhou 550001, China.

⁴ Department of Obstetrics and Gynecology, The Second Affiliated Hospital of Soochow University, Suzhou 215004, China

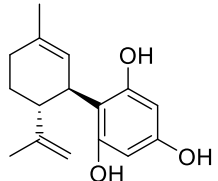
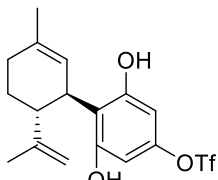
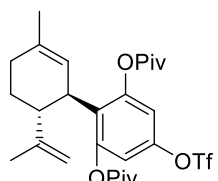
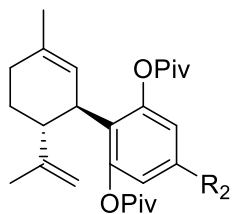
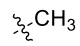
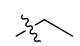

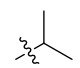
⁵ School of Pharmacy and Food Engineering, Guangdong Provincial Key Laboratory of Large Animal Models for Biomedicine, Wuyi University, Jiangmen 529020, China

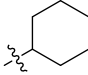
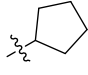
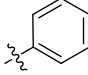
⁶ Department of Biology, Providence College, Providence, RI 02918, USA

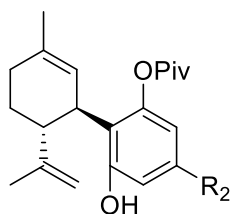
⁷ Department of Biological Sciences and Chemistry, College of Sciences and Engineering, Southern University and A&M College, Baton Rouge, LA 70807, USA

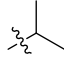
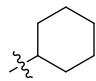
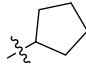
⁸ Department of Pathobiological Sciences, School of Veterinary Medicine, Louisiana State University, Baton Rouge, LA 70803, USA

Table S1. Inhibitory effects of the reaction intermediate **37-49** with a leaving group triflate (-OTf) or a protecting group pivaloyl (-Piv) on the growth of B16F10 cells at the concentration of 20 μ M.

Compound	MW (g/mol)	Functional group	Inhibition
37	260.33		n.a. ^a
38	392.39		n.a.
39	560.63		n.a.
			
Compound	MW(g/mol)	Functional group	Inhibition
40	426.60	R ₂ = 	n.a.
41	440.62	R ₂ = 	n.a.
42	452.64	R ₂ = 	n.a.
43	454.65	R ₂ = 	n.a.

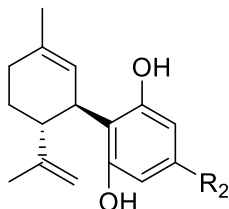
44	494.72	R ₂ =		n.a.
45	480.69	R ₂ =		n.a.
46	488.67	R ₂ =		n.a.



Compound	MW(g/mol)		Functional group	Inhibition
47	370.53	R ₂ =		n.a.
48	410.60	R ₂ =		32.3%
49	396.57	R ₂ =		49.0%

^an.a. = not active (no inhibition)

Table S2. Inhibitory effects of the synthetic cannabinoids **50-56** with various side chains on the growth of B16F10 cells at the concentration of 20 μ M.



Compound	MW(g/mol)		Functional group	Inhibition
50	258.36	R ₂ =		n.a. ^a
51	272.39	R ₂ =		n.a.
52	284.40	R ₂ =		n.a.
53	286.42	R ₂ =		n.a.
54	326.48	R ₂ =		61.7%
55	312.45	R ₂ =		55.2%
56	320.43	R ₂ =		n.a.

^an.a. = not active (no inhibition)