

Nicotinamide riboside and phycocyanin oligopeptides affect stress susceptibility in chronic corticosterone-exposed rats

Cemal Orhan¹, Emre Sahin², Mehmet Tuzcu³, Nurhan Sahin¹, Abdullah Celik¹, Sara Perez Ojalvo⁴, Sarah Sylla⁴, James R. Komorowski⁴ and Kazim Sahin^{1,*}

¹Department of Animal Nutrition, Faculty of Veterinary Medicine, Firat University, Elazig, Turkey

²Department of Animal Nutrition, Faculty of Veterinary Medicine, Bingol University, Bingol, Turkey

³Department of Biology, Faculty of Science, Firat University, Elazig, Turkey

⁴Research and Development, Nutrition 21, Harrison, NY 10577, USA

*Corresponding author:

Kazim Sahin, DVM, Ph.D., F.A.C.N. Member of The Turkish Academy of Sciences, Professor of Nutrition Veterinary Faculty Firat University 23119 Elazig, Turkey. Phone: +90-532-7473506, Phone: +904242370000/3938
Email: nsahinkm@yahoo.com, ksahin@firat.edu.tr

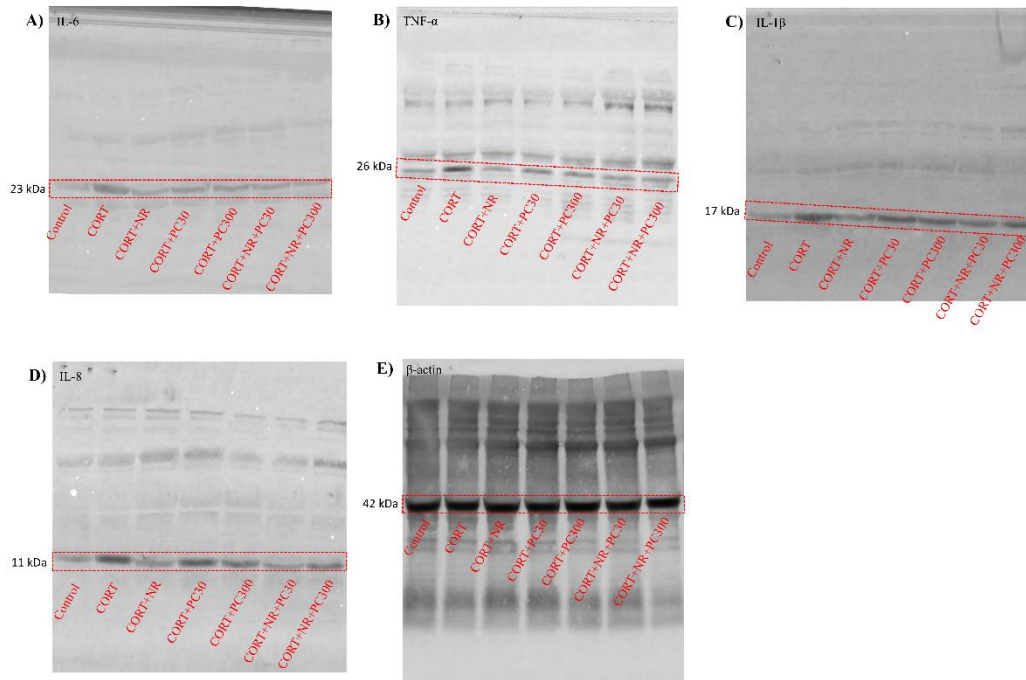


Figure S1. Full immunoblots related to Figure 2 [liver IL-6 (A), TNF- α (B), IL-1 β (C), IL-8 (D) and (E) β -actin levels]. The densitometric analysis of the relative intensity according to the control group of the western blot bands was performed with β -actin normalization to ensure equal protein loading. How many kDa are shown in each blot's representative. IL-6, interleukin-6; TNF- α , tumor necrosis factor α ; IL-1 β , interleukin-1 β ; IL-8, interleukin-8.

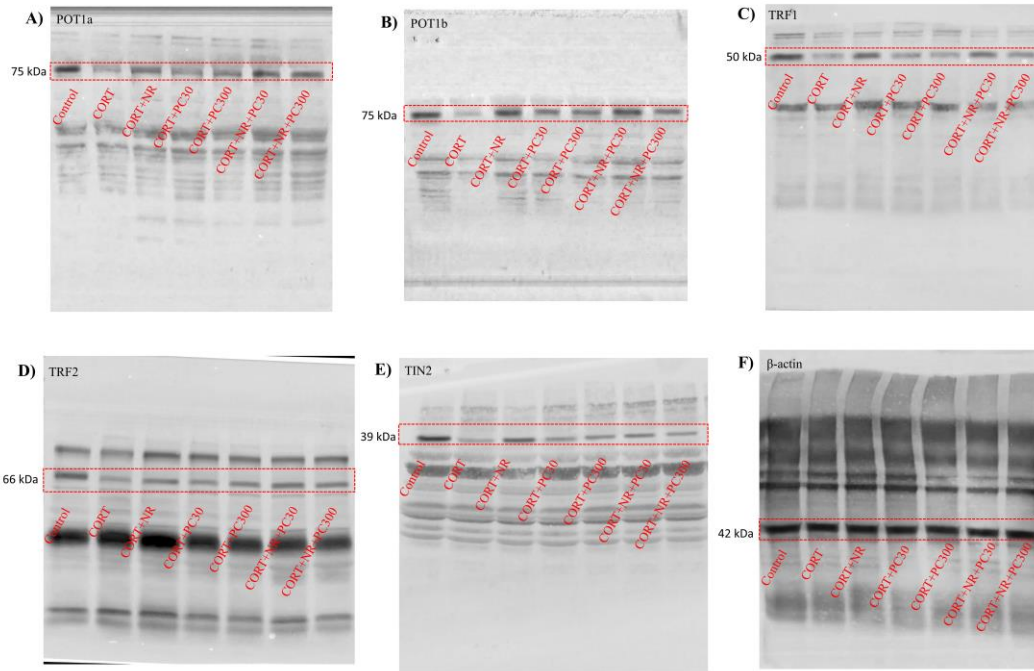


Figure S2. Full immunoblots related to Figure 3 [liver POT1a (A), POT1b (B), TRF1 (C), TRF2 (D) TIN2 (E) and β -actin (F) levels]. The densitometric analysis of the relative intensity according to the control group of the western blot bands was performed with β -actin normalization to ensure equal protein loading. How many kDa are shown in each blot's representative. POT1a, protection of telomeres protein 1a; POT1b, protection of telomeres protein 1b; TRF1, telomeric repeat-binding factor 1; TRF2, telomeric repeat-binding factor 1; TIN2, TRF1-interacting protein 2.

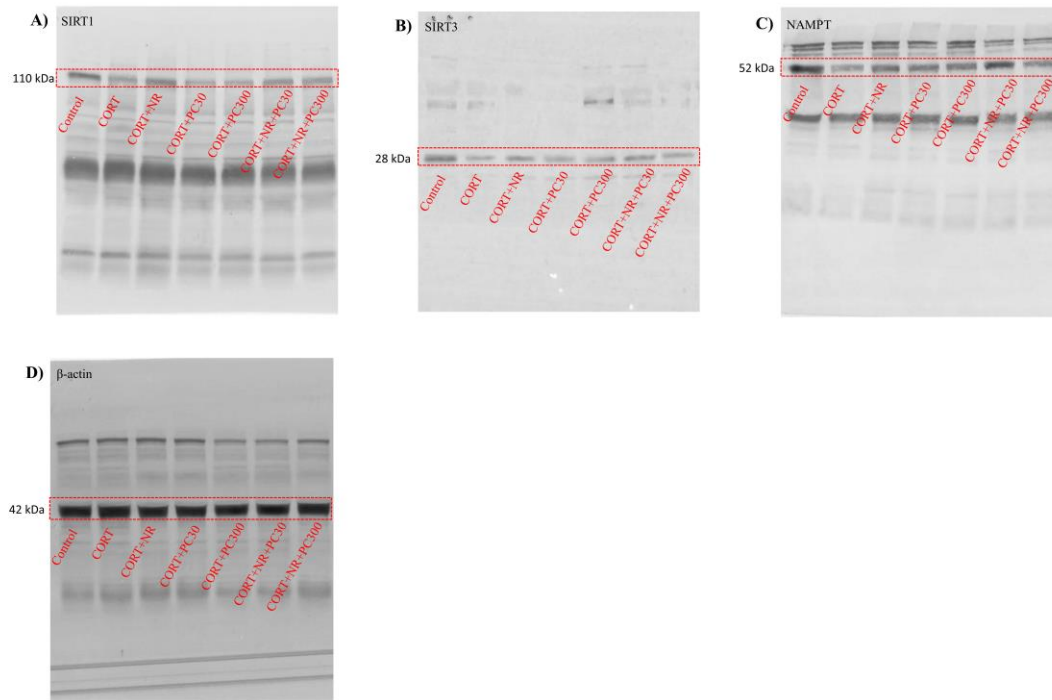


Figure S3. Full immunoblots related to Figure 4 [liver SIRT1 (A), SIRT3 (B), NAMPT (C) and β -actin (D) levels]. The densitometric analysis of the relative intensity according to the control group of the western blot bands was performed with β -actin normalization to ensure equal protein loading. How many kDa are shown in each blot's representative. SIRT1, sirtuin 1; SIRT3, sirtuin 3; NAMPT, Nicotinamide phosphoribosyltransferase.