

Supplementary Materials:



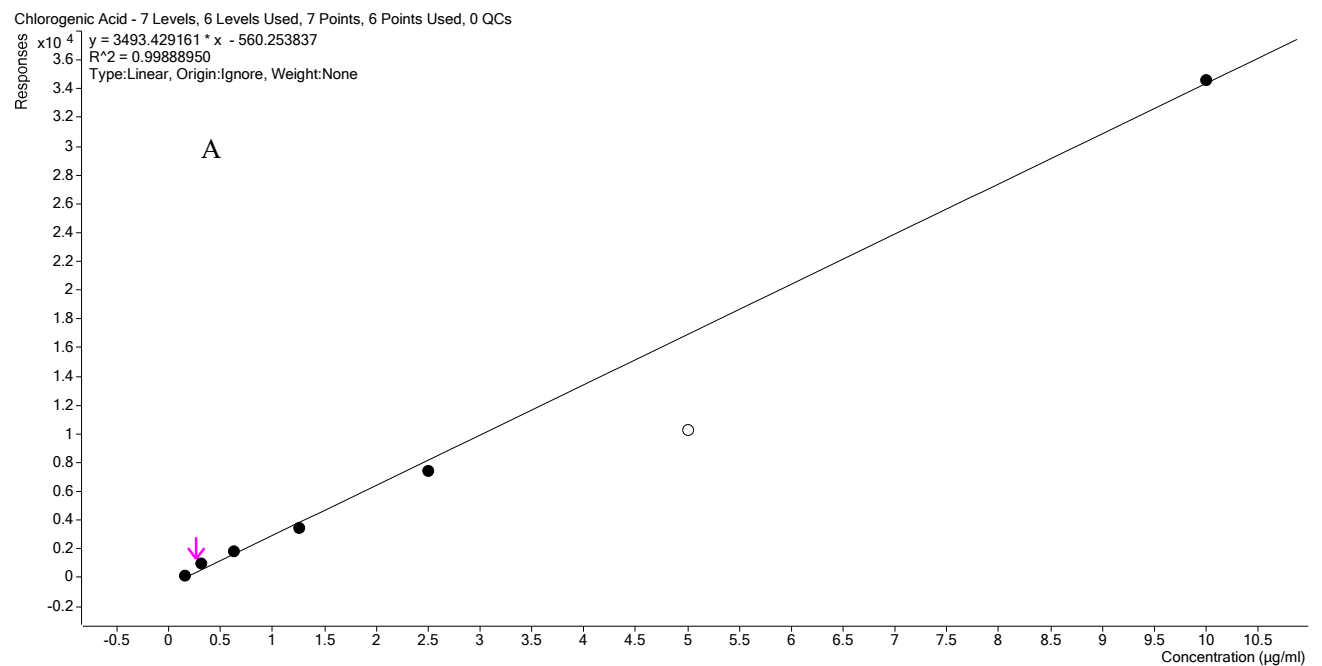
Figure S1. A photograph of the encapsulated tamarillo extract with maltodextrin, in 10% w/w.

Calculation of total phenolic content in mg of gallic acid equivalent per g of extracted powder:

$$= \frac{\text{Final concentration (mg/L)} \times \text{volume of extract (0.01L)} \times \text{dilution factor (100)}}{\text{weight of sample (g)}}$$

Calculation of antioxidant capacity in mg of Trolox equivalent per g of extracted powder:

$$= \frac{\text{Final concentration} \left(\frac{\text{mg}}{\text{L}} \right) \times \text{volume of extract (0.01L)}}{\text{weight of sample (g)}}$$



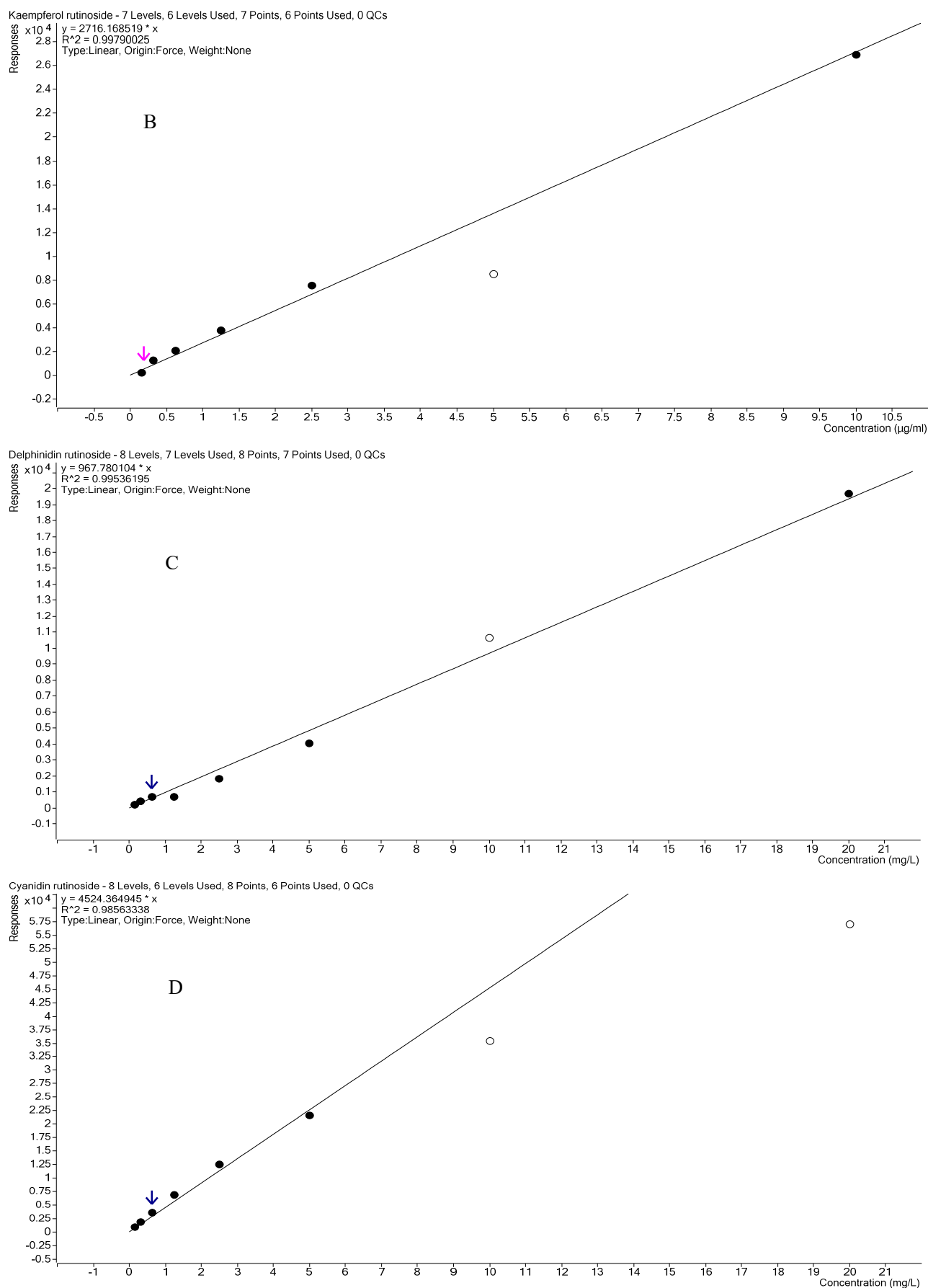


Figure S2. Calibration curve of phenolic and anthocyanin content determined by LC-MS. A represents the concentration of chlorogenic acid in unit of $\mu\text{g/L}$, B represents the concentration of kaempferol-3-rutinoside in

$\mu\text{g/L}$, C represents the concentration of delphinidin-3-rutinoside in mg/L , and D represents the concentration of pelargonidin-3-rutinoside in mg/L .

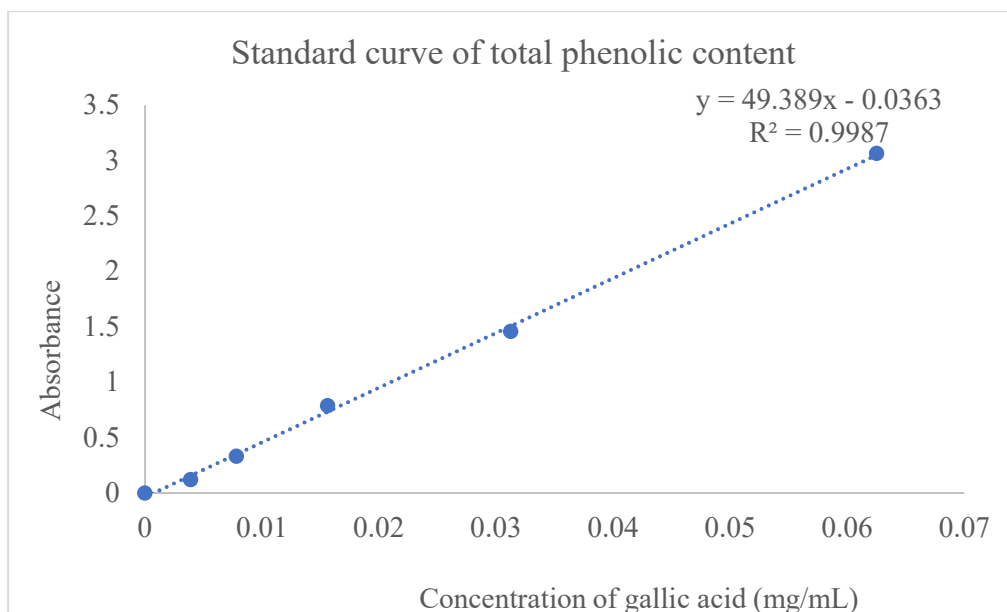


Figure S3. Standard curve of total phenolic content measurement with Folic Ciocalteu reagent.

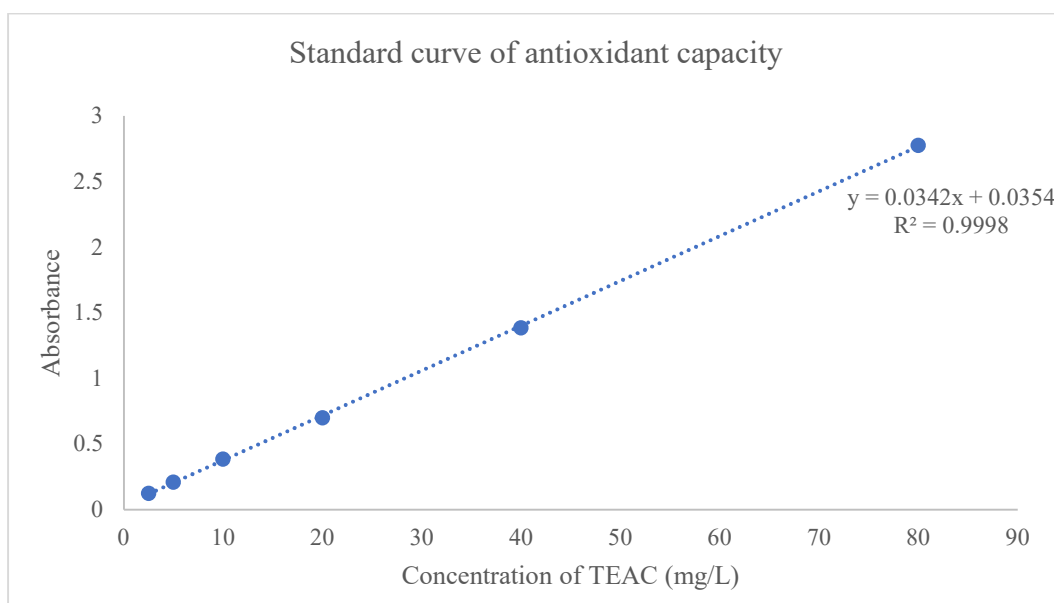


Figure S4. Standard curve of antioxidant capacity measured by CUPRAC method.