

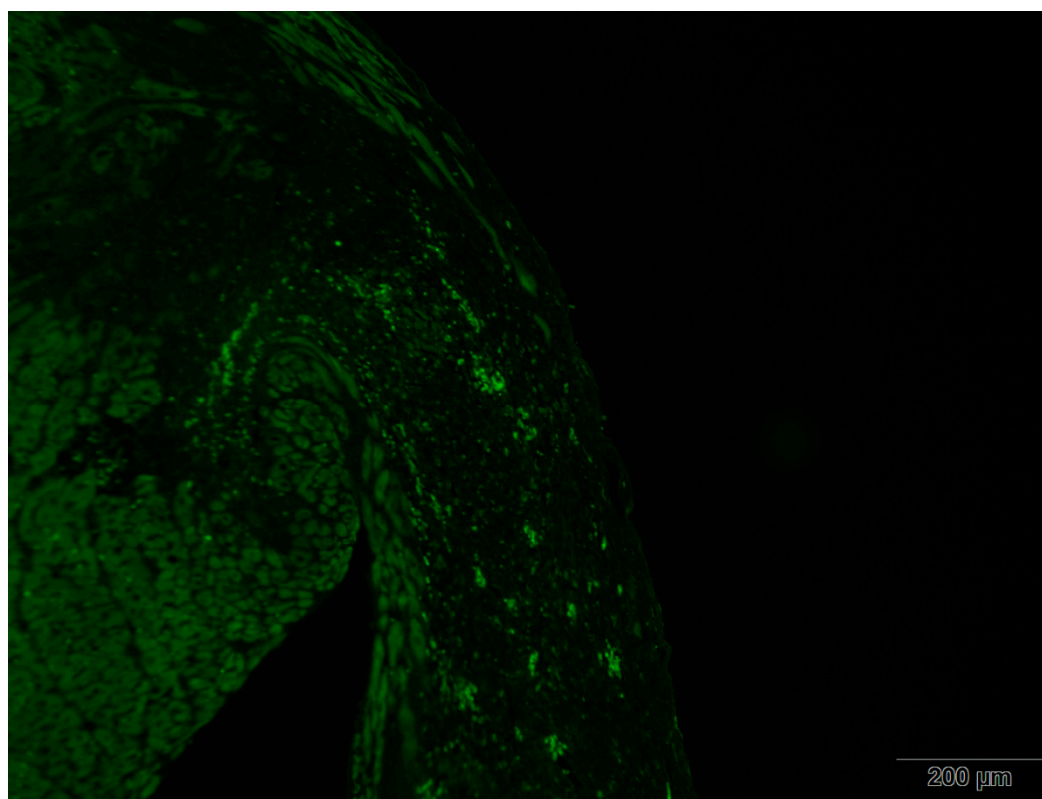
Supporting information

Supplementary Table S1. Primer sequences used for qRT-PCR

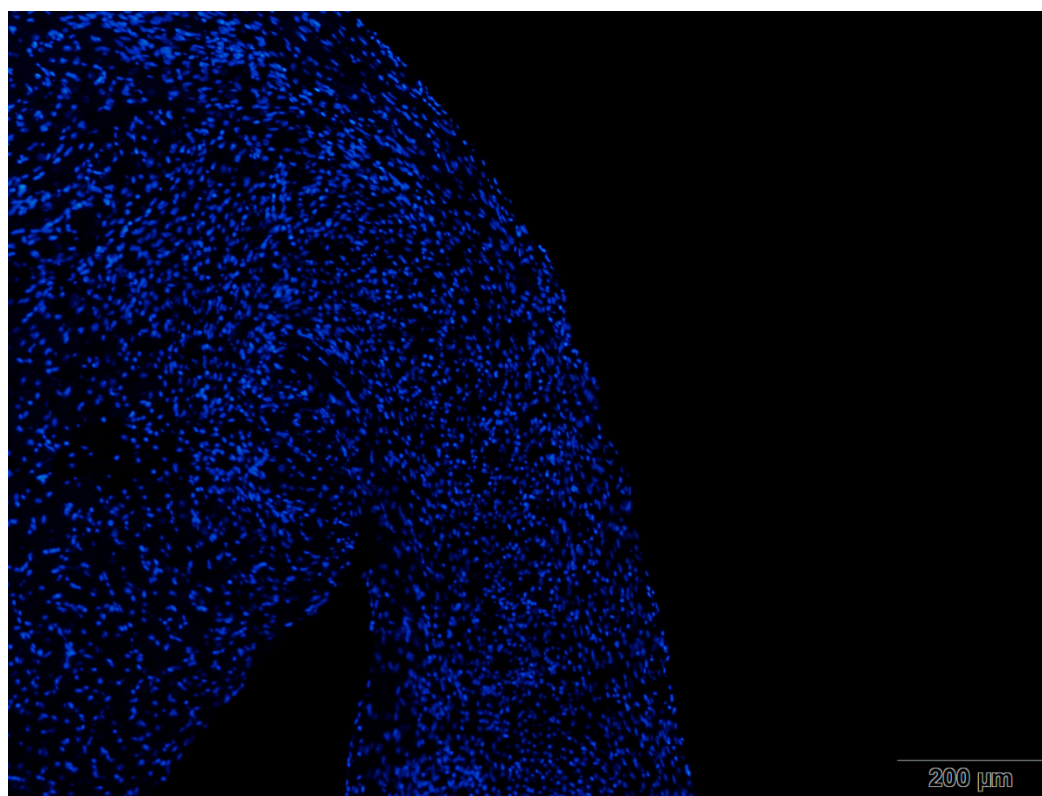
Primer name	Primer Sequence 5'→3'	T _m (°C)
COLIAI	Forward: ATGGATTCCCGTTCGAGTACG	59
	Reverse: TCAGCTGGATAGCGACATCG	
FSPI	Forward: TCAGGCAAAGAGGGTGACAAG	60
	Reverse: AGGCAGCTCCCTGGTCAGT	
SNAIL	Forward: GATGAGGACAGTGGCAAAAGCTC	61
	Reverse: AGAATGGCTTCTCACCAGTGTGG	
TGF β I	Forward: AGATTAAAATCAAGTGTGGAGCAAC	59
	Reverse: GTCCTTCCTAAAGTCAATGTACAGC	
VIMENTIN	Forward: GGTACAAGTCCAAGTTTGCTGACCT	61
	Reverse: CATTGAGCAGATCTTGGTATTCACG	
GAPDH	Forward: CATCACTGCCACCCAGAAGACTG	60
	Reverse: ATGCCAGTGAGCTTCCC GTTCAG	

Supplementary Figure S1. High-quality figures of Figure 4C

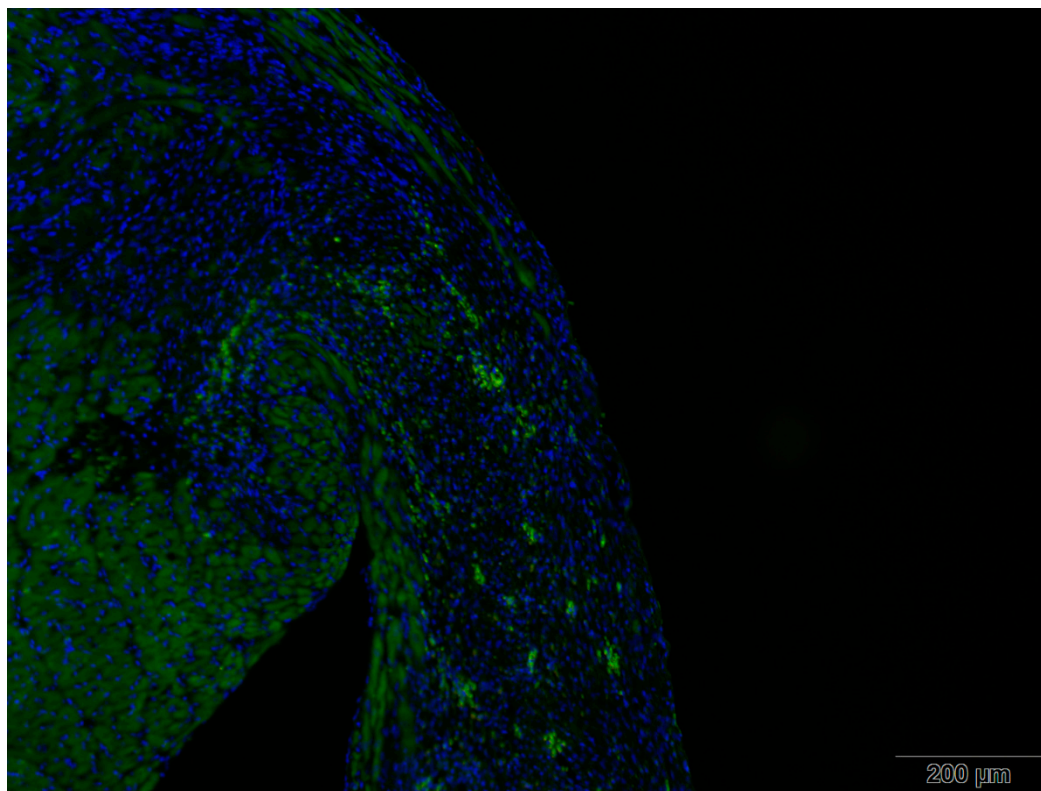
MI Snail



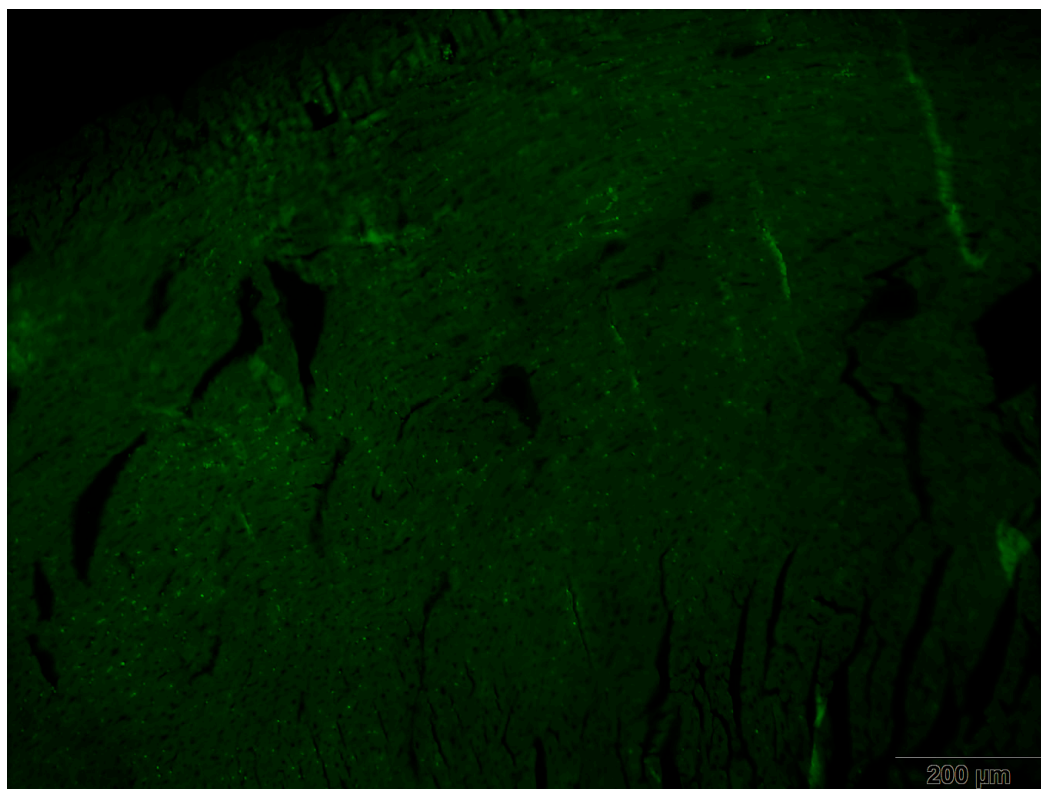
MI DAPI



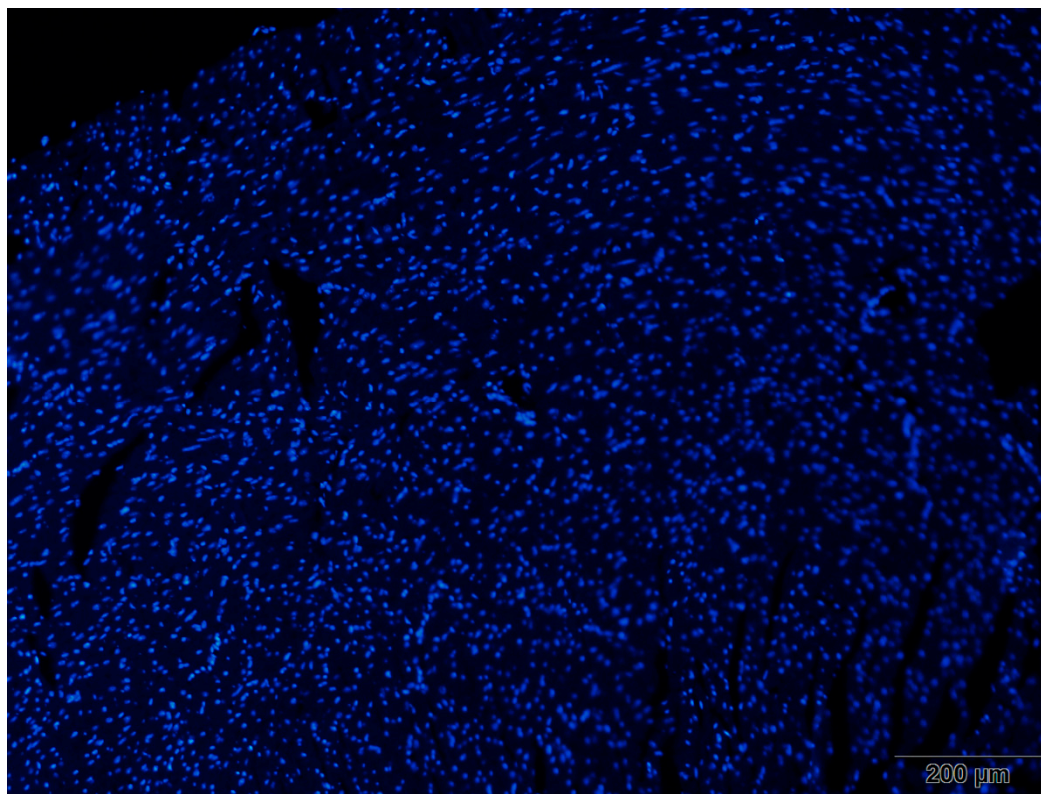
MI Merge



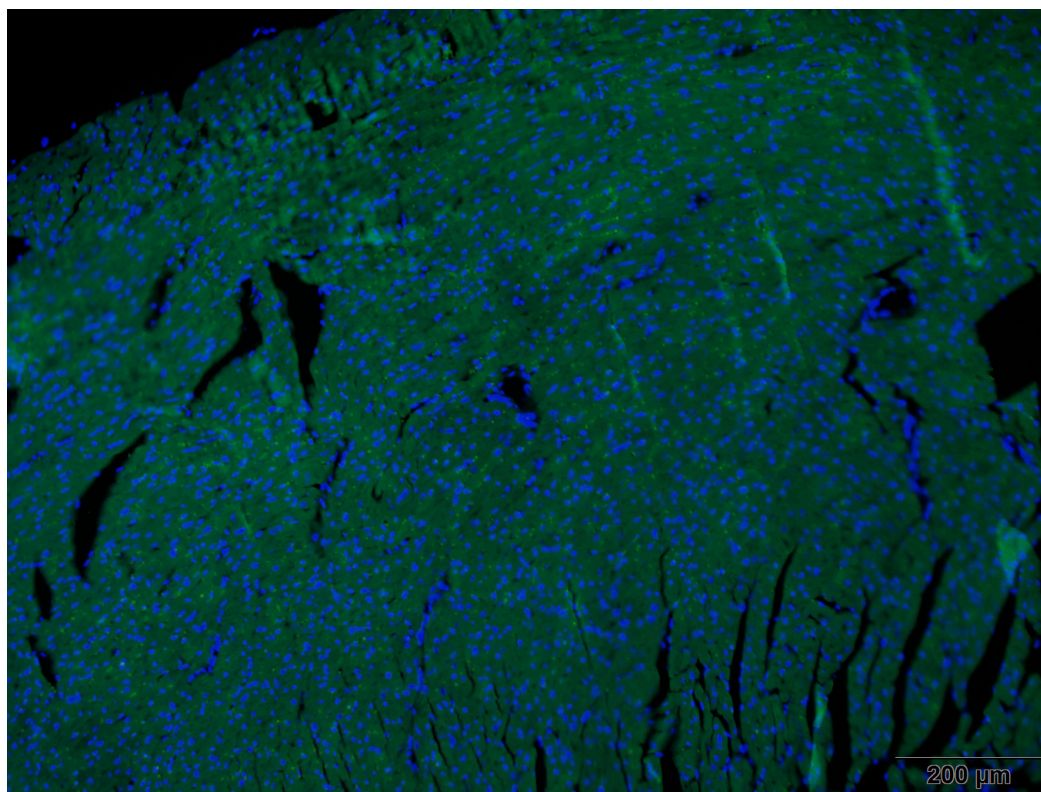
MI+EGCG Snail



MI+EGCG DAPI

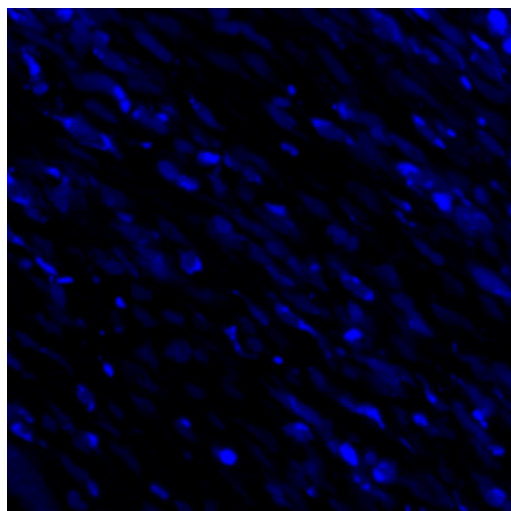


MI+EGCG Merge

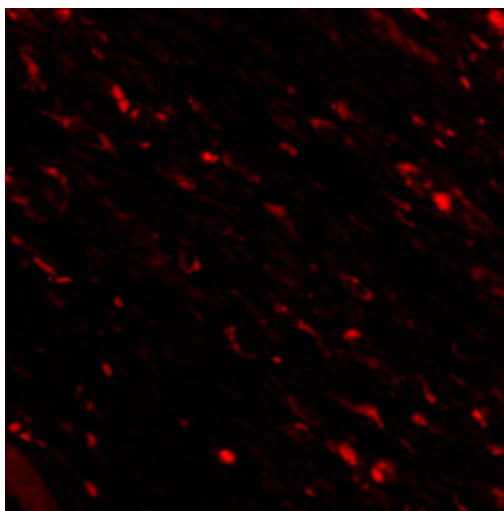


Supplementary Figure S2. High-quality figures of Figure 5B

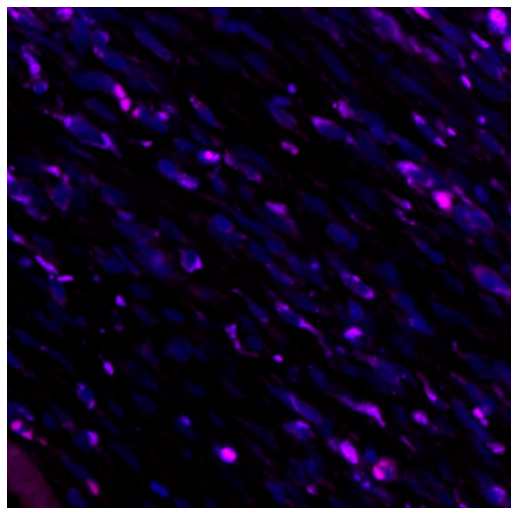
MI 7-AAD



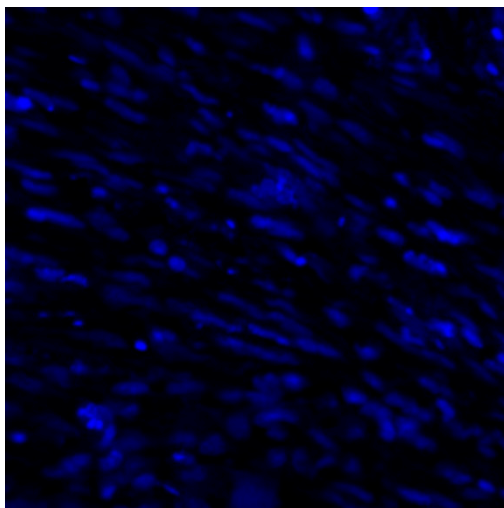
MI Br-dUTP



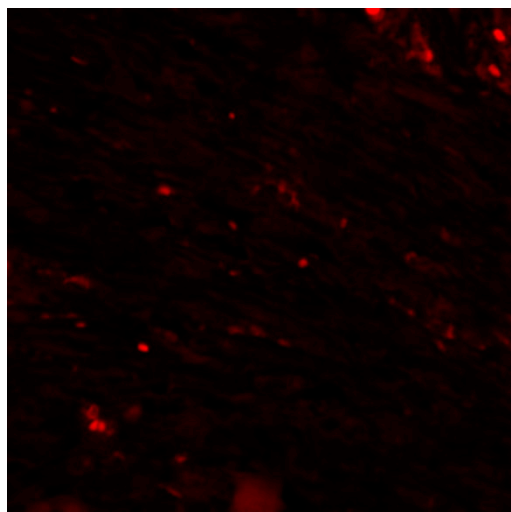
MI Merge



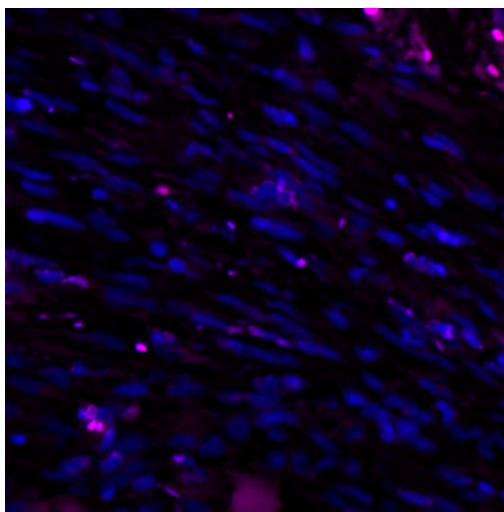
MI+EGCG 7-AAD



MI+EGCG Br-dUTP

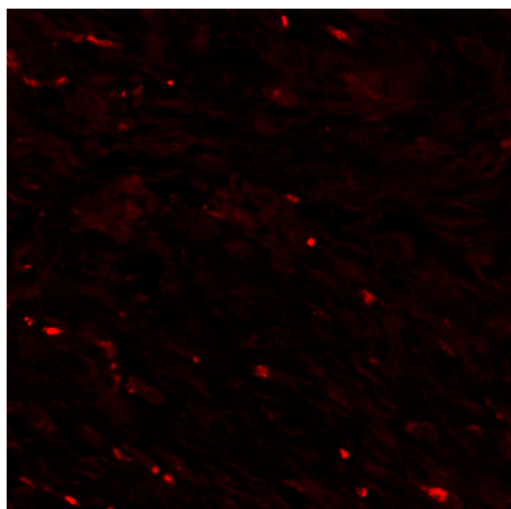


MI+EGCG Merge

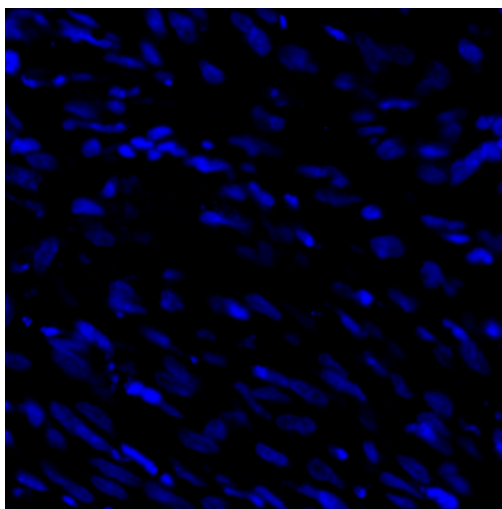


Supplementary Figure S3. High-quality figures of Figure 5D

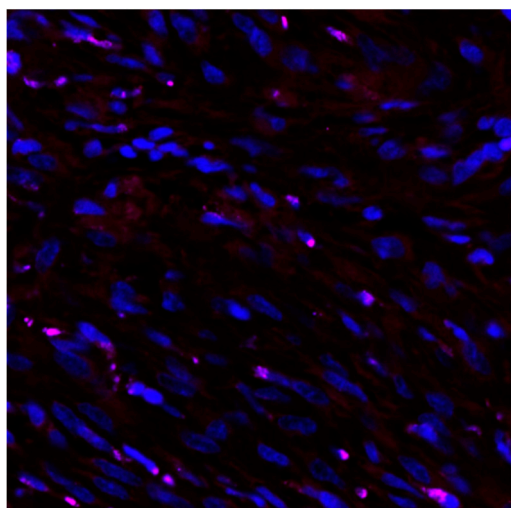
MI CD31



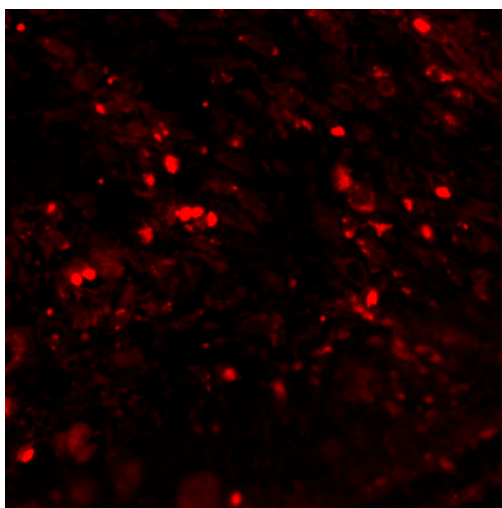
MI DAPI



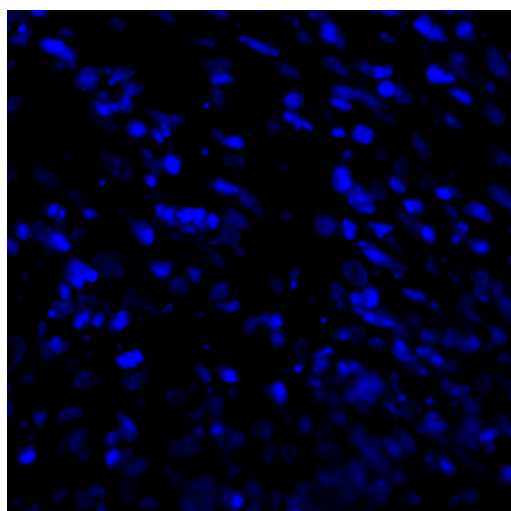
MI Merge



MI+EGCG CD31



MI+EGCG DAPI



MI+EGCG Merge

