

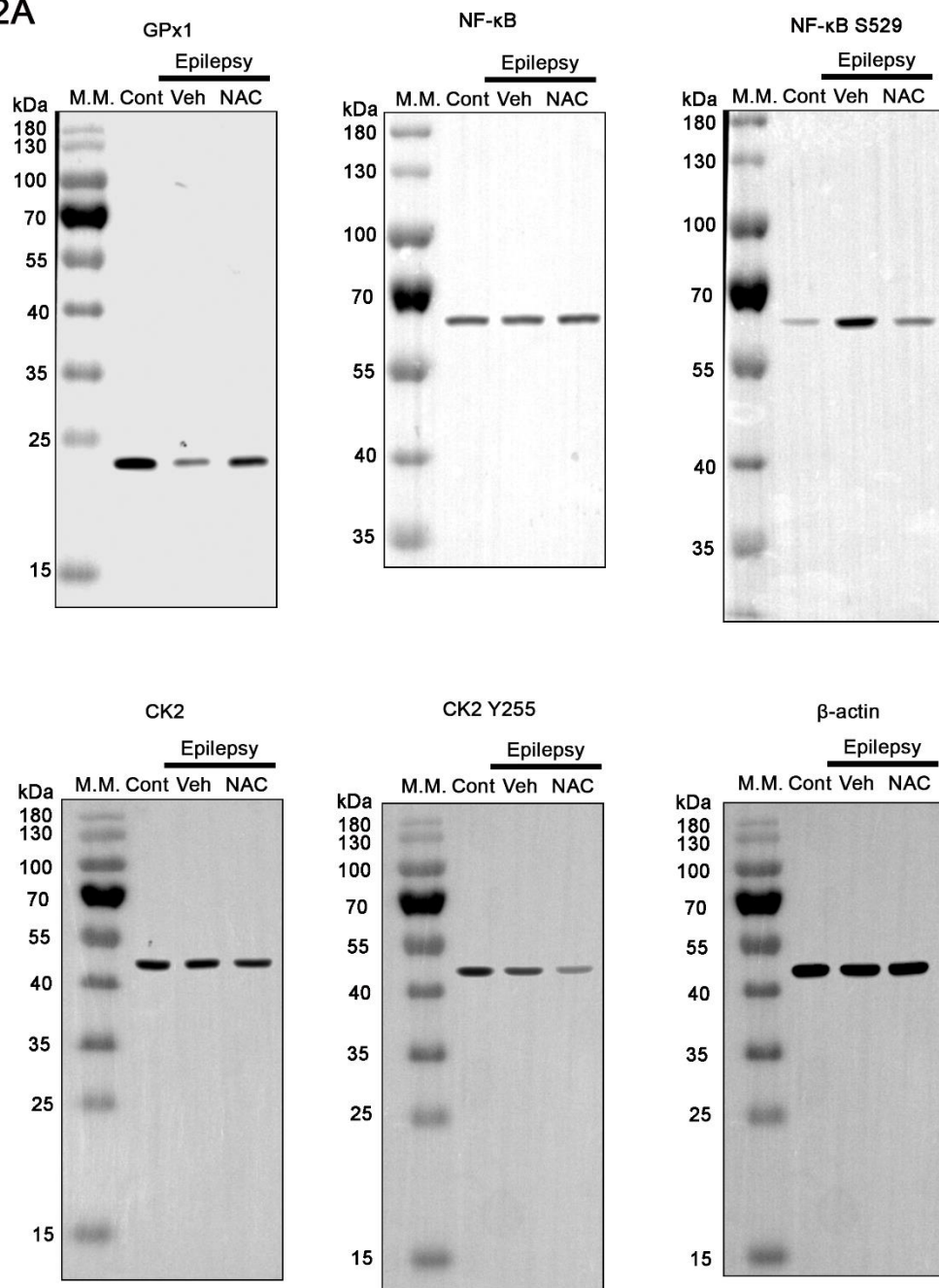
Distinct roles of CK2 and AKT-mediated NF- κ B phosphorylations in clasmatodendrosis (autophagic astroglial death) within the hippocampus of chronic epilepsy rats

Ji-Eun Kim,¹ Duk-Shin Lee,¹ Tae-Hyun Kim,¹ Hana Park,¹ Tae-Cheon Kang^{1,*}

¹Department of Anatomy and Neurobiology, Institute of Epilepsy Research, College of Medicine, Hallym University, Chuncheon 24252, Republic of Korea

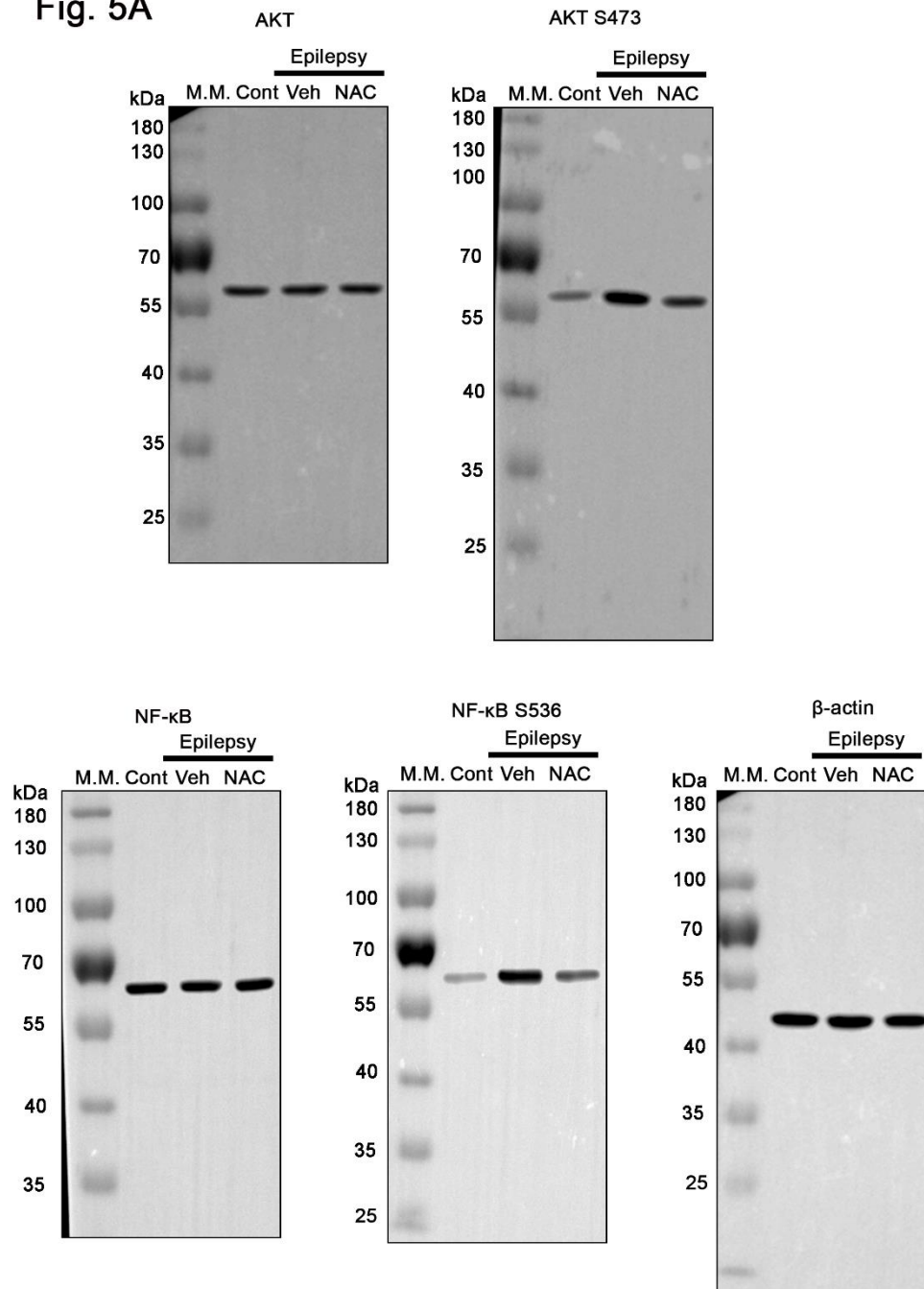
* Correspondence to: T. -C. Kang, Department of Anatomy and Neurobiology, College of Medicine, Hallym University, Chuncheon, Kangwon-Do 24252, Republic of Korea; Tel: +82-33-248-2524; Fax: +82-33-248-2525; E-mail: tckang@hallym.ac.kr

Fig. 2A



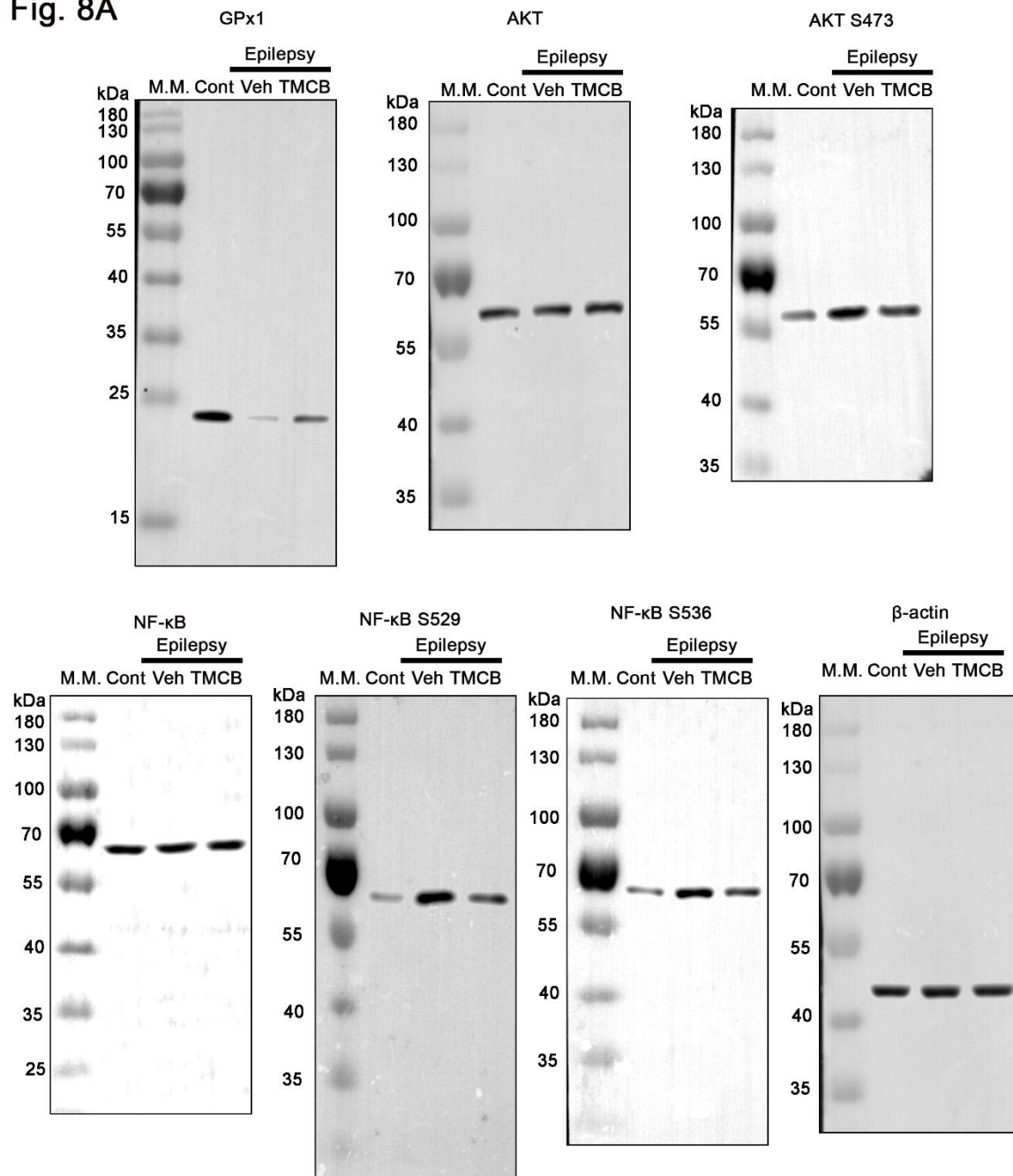
Supplementary Figure S1. Full-length gel images of Western blots in Figures 2A.

Fig. 5A



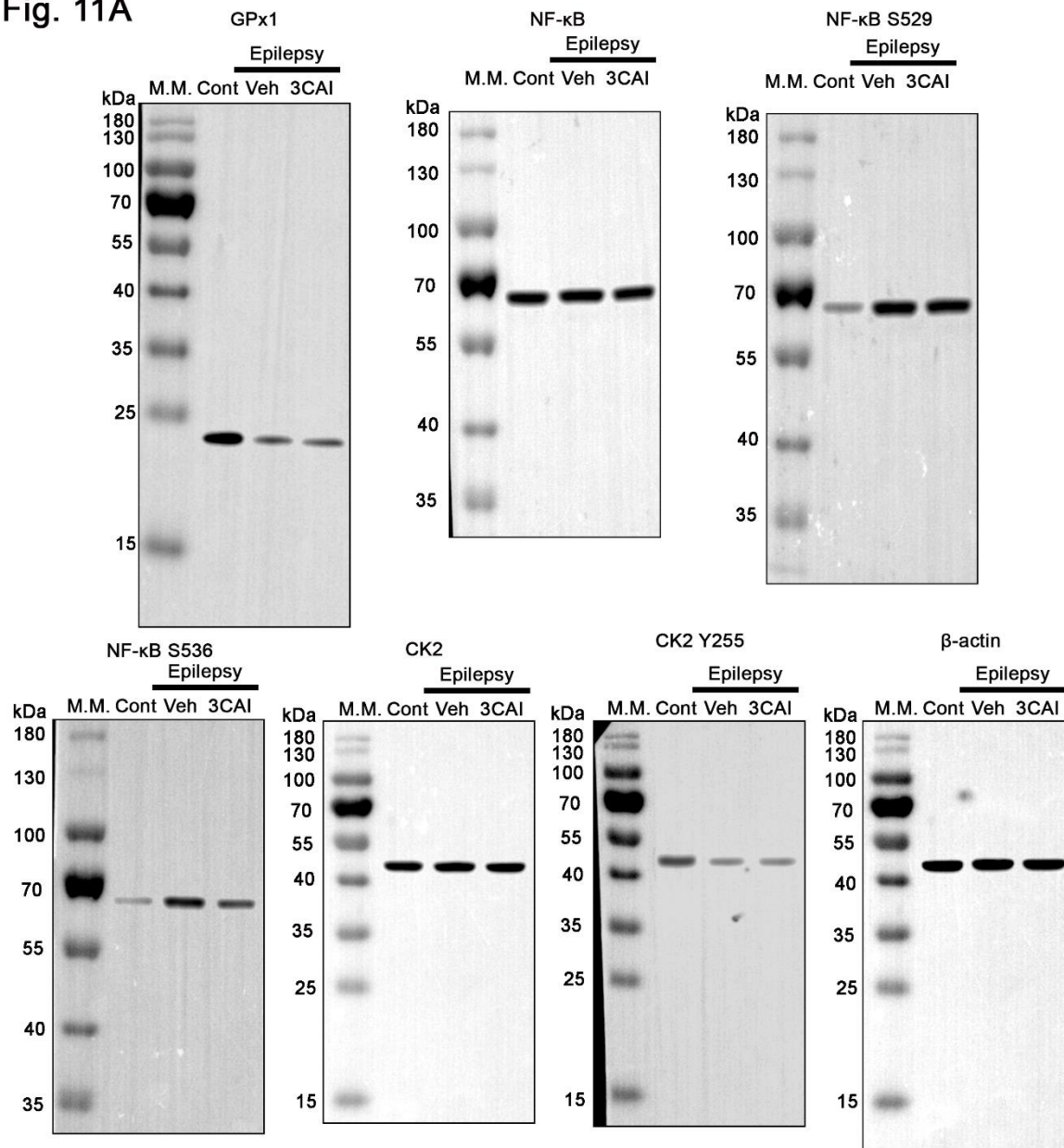
Supplementary Figure S2. Full-length gel images of Western blots in Figures 5A.

Fig. 8A



Supplementary Figure S3. Full-length gel images of Western blots in Figures 8A.

Fig. 11A



Supplementary Figure S4. Full-length gel images of Western blots in Figures 11A.