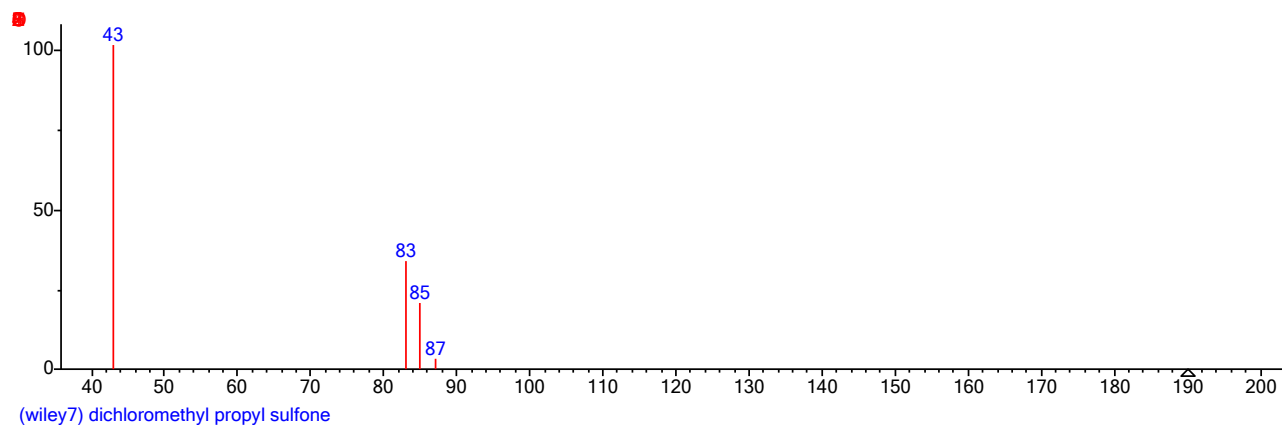
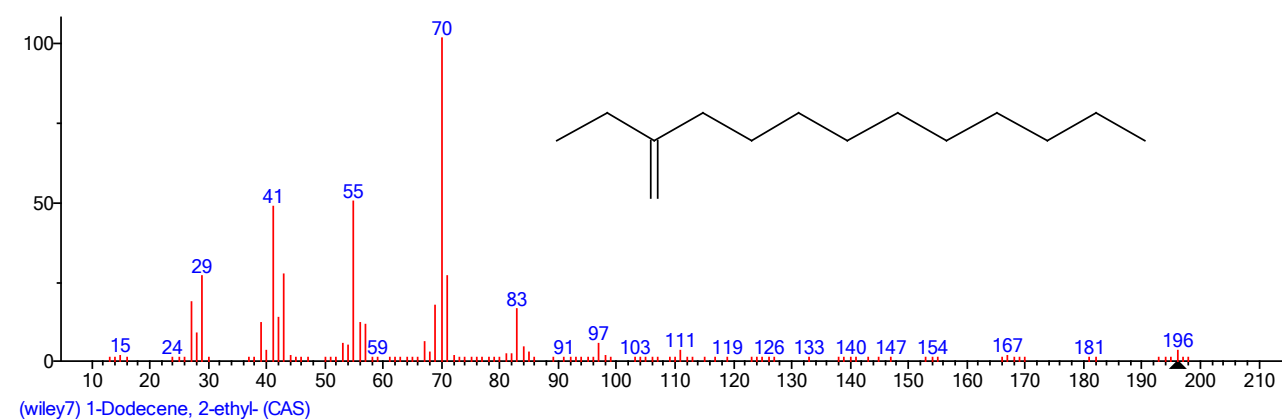


Supplementary Figure S2 GC-MS Spectra data

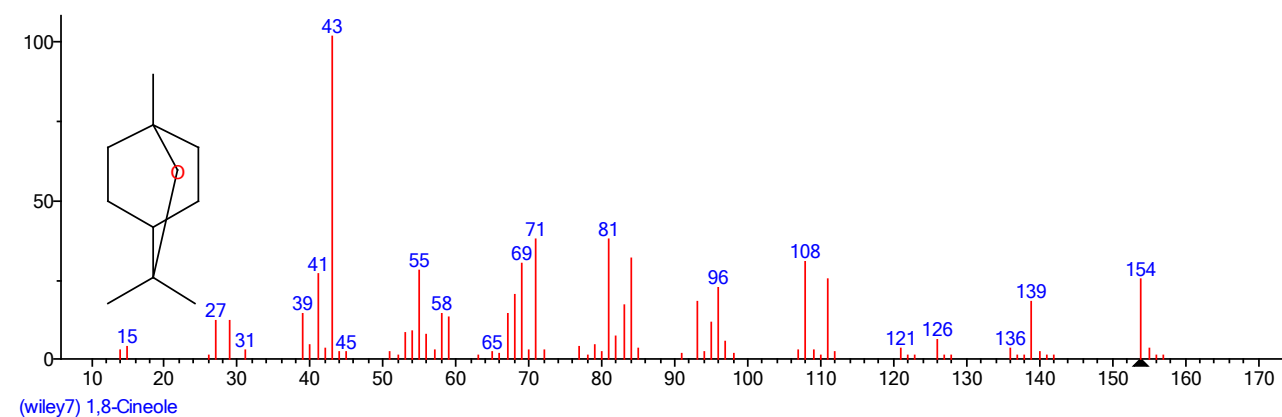
dichloromethyl propyl sulfone



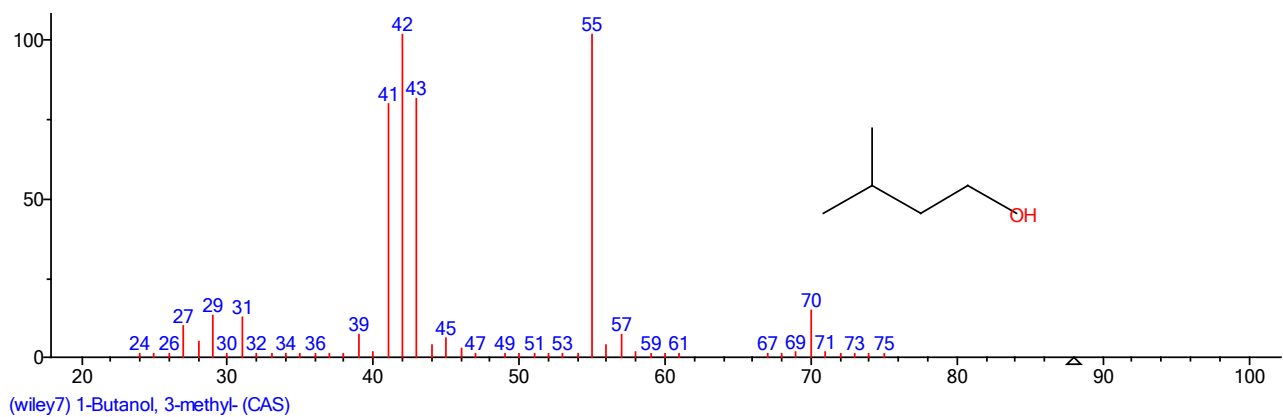
2-Ethyl-1-decanol



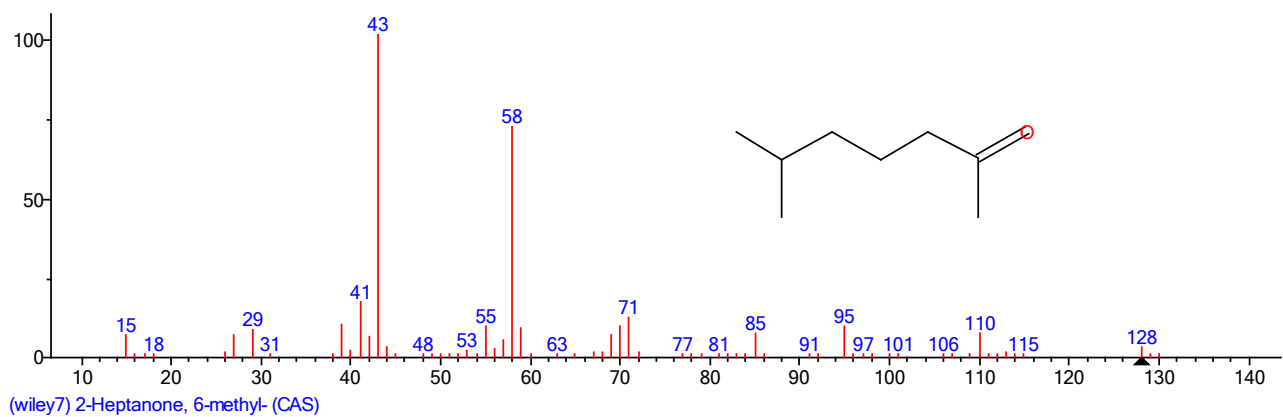
1,8-Cineole



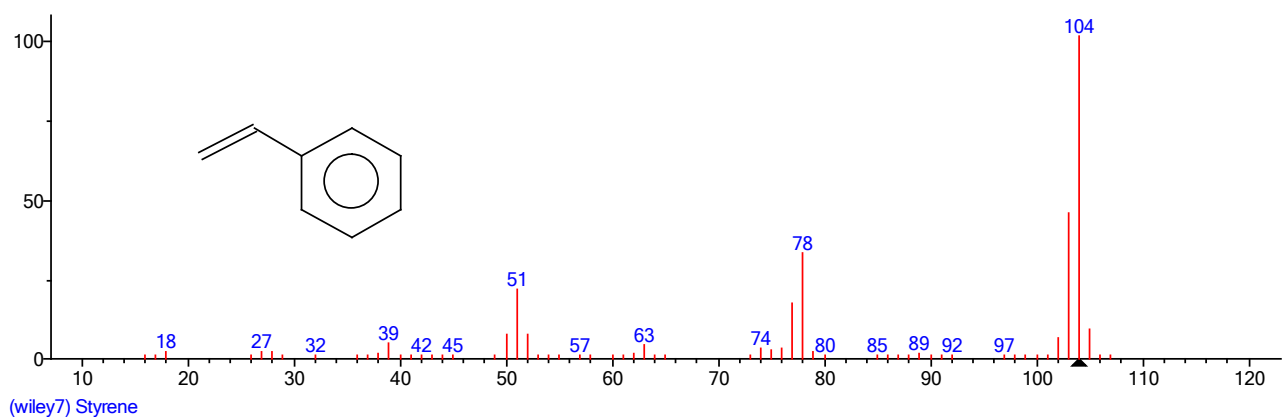
iso amyl alcohol



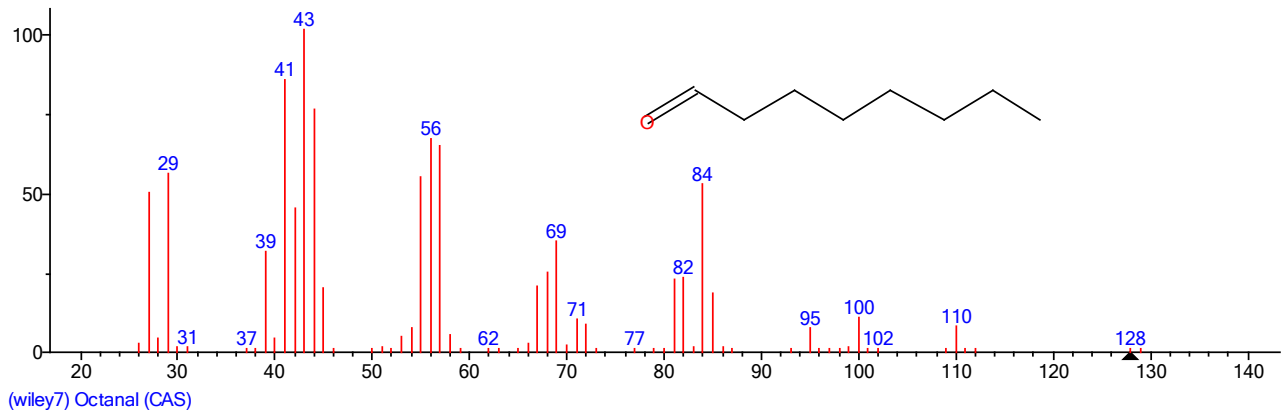
6-Methyl-2-heptanone



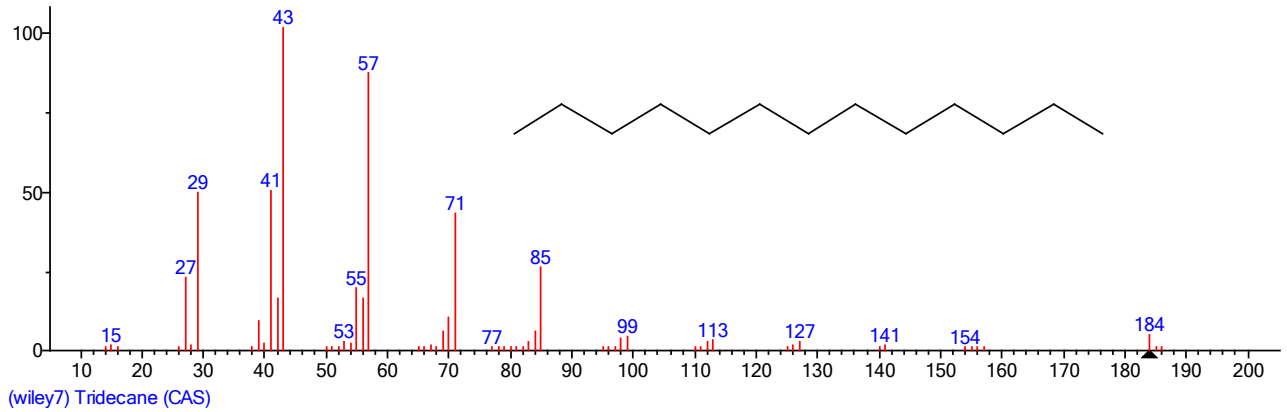
Styrene



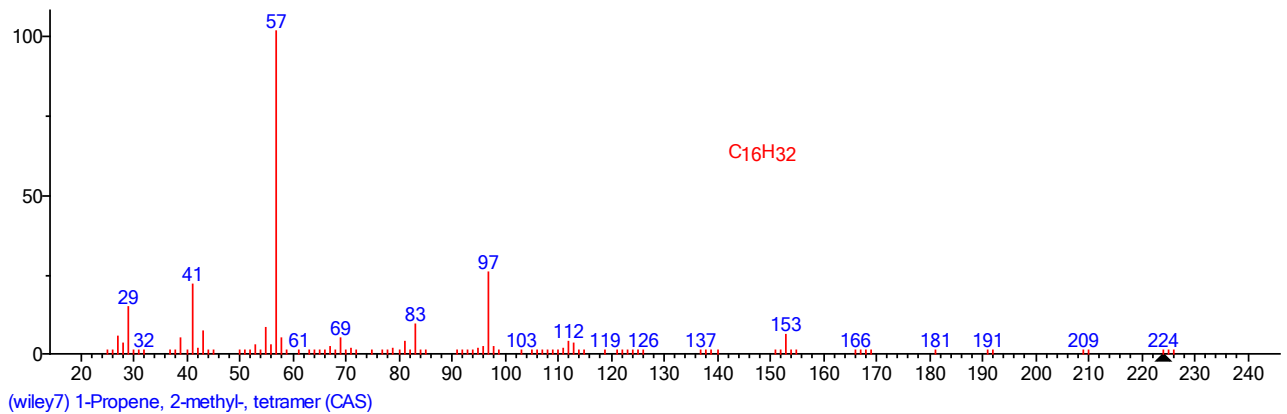
Octanal



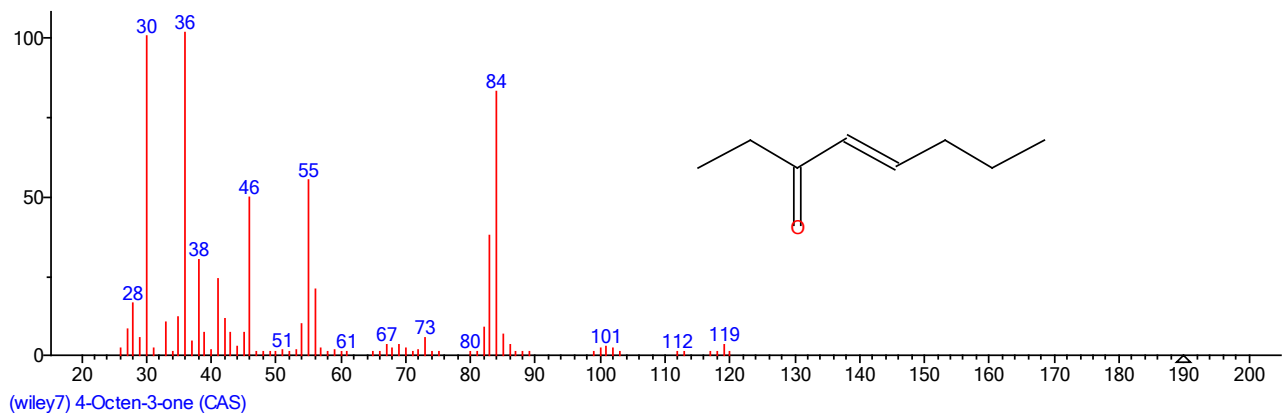
Tridecane



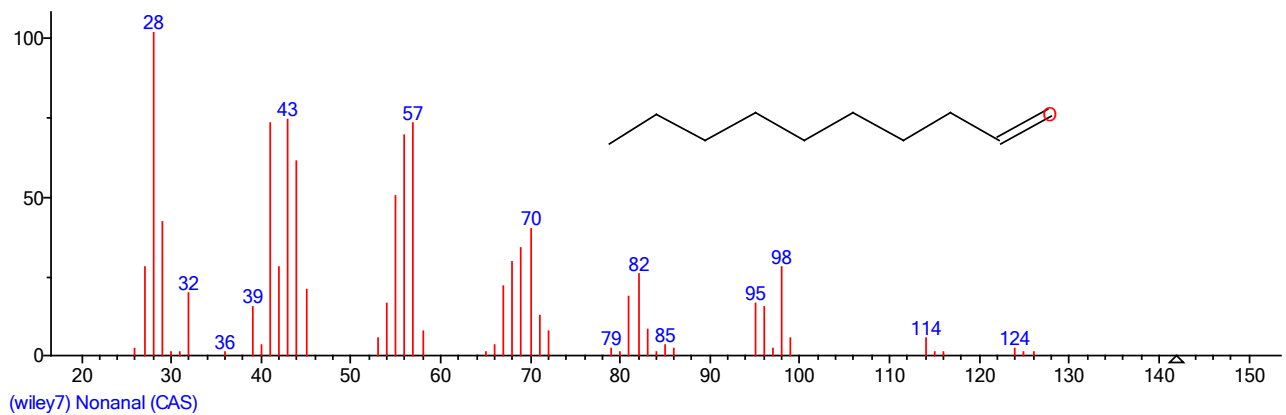
Tetraisobutylene



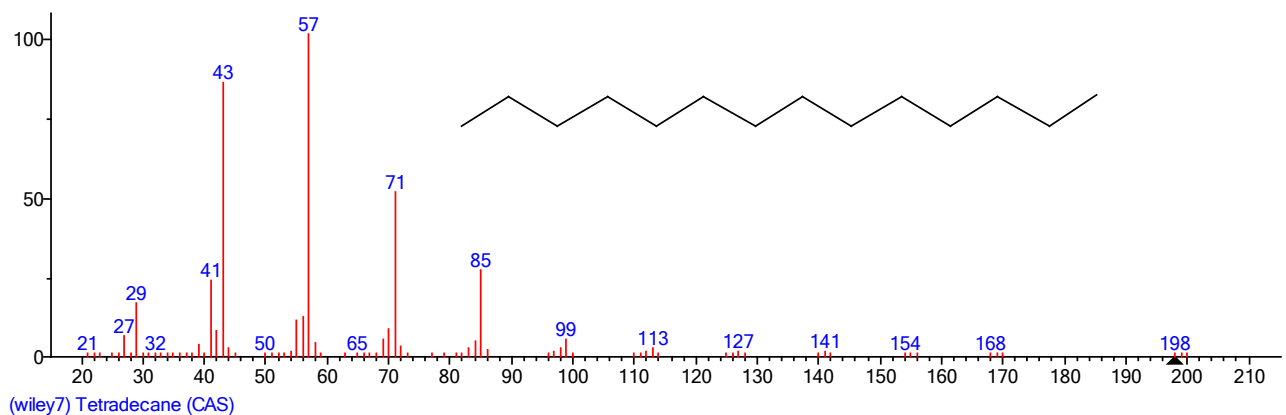
4-Octen-3-one



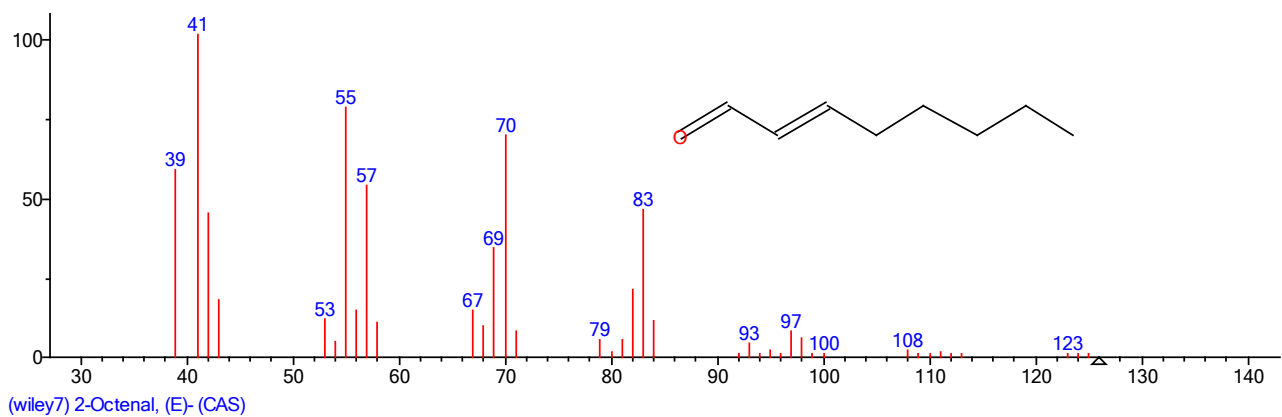
Nonanal



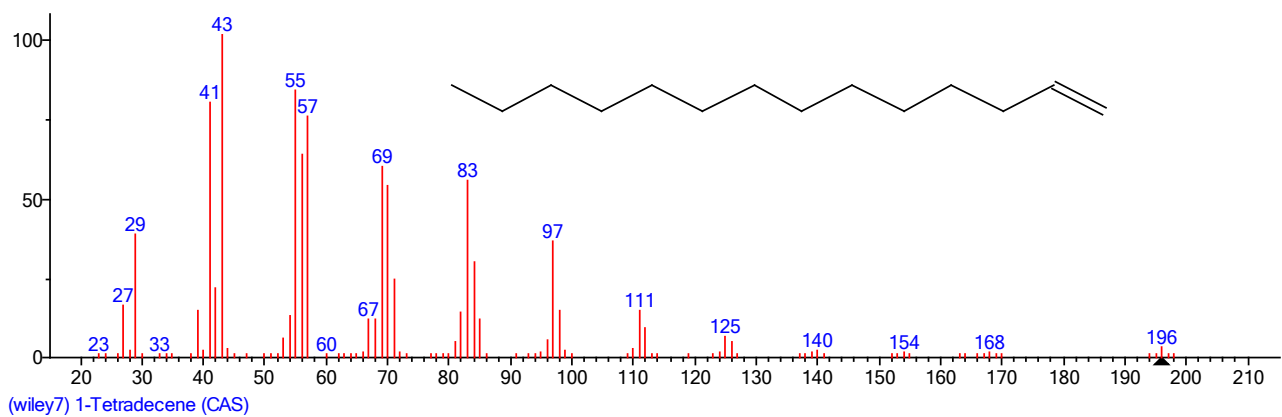
Tetradecane



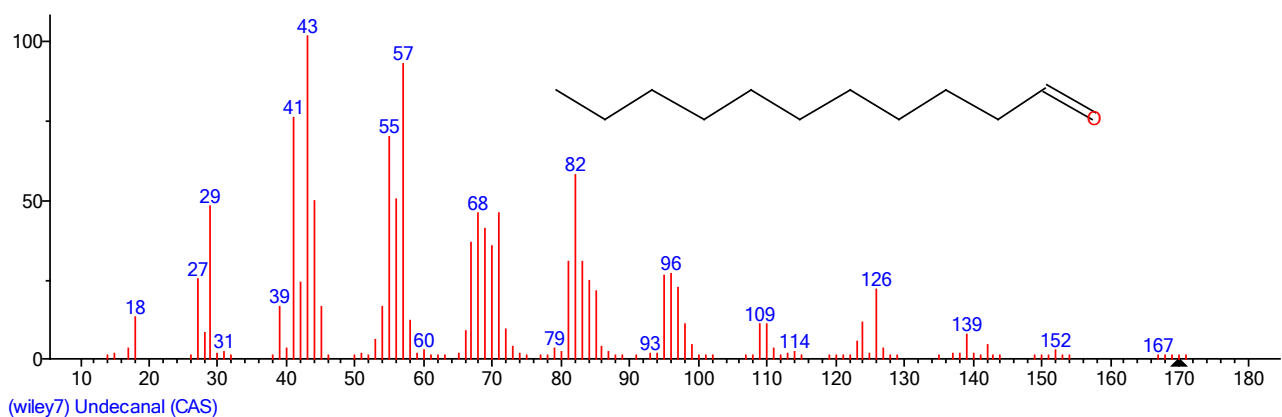
(E)-2-Octenal



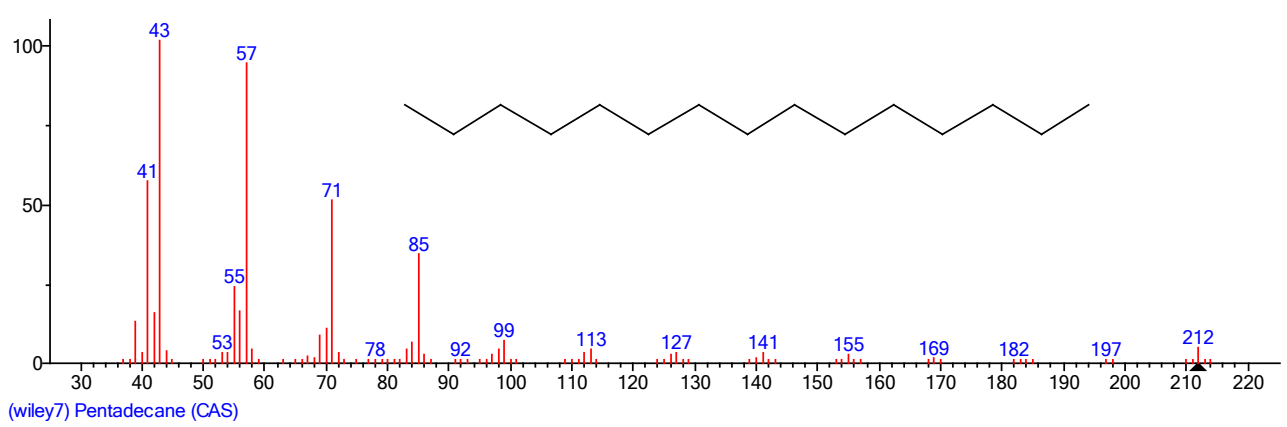
1-Tetradecene



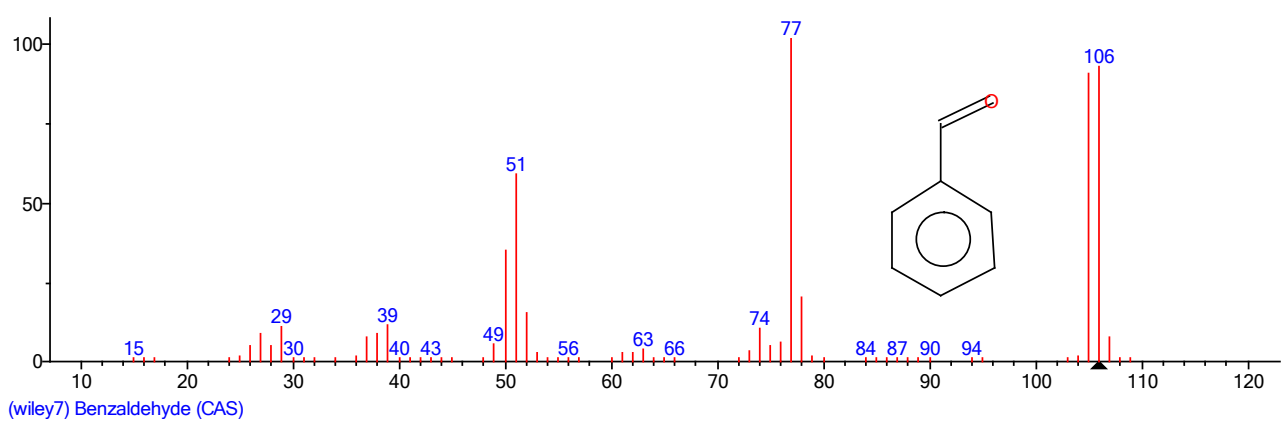
Undecanal



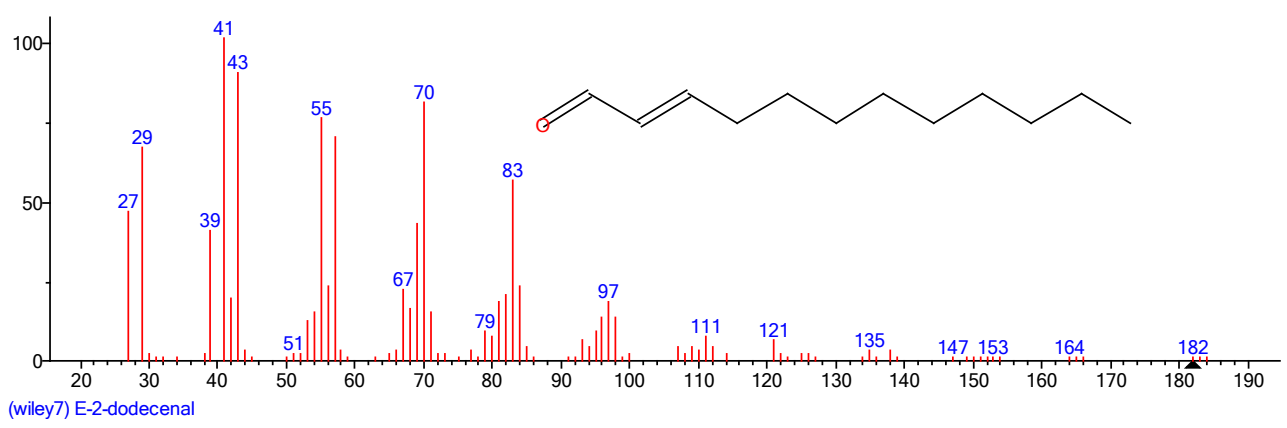
Pentadecane



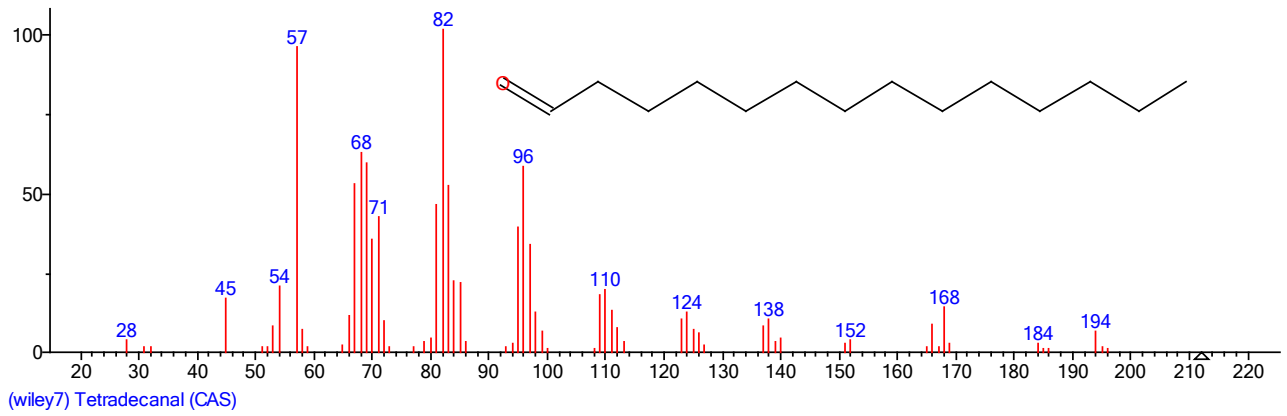
Benzaldehyde



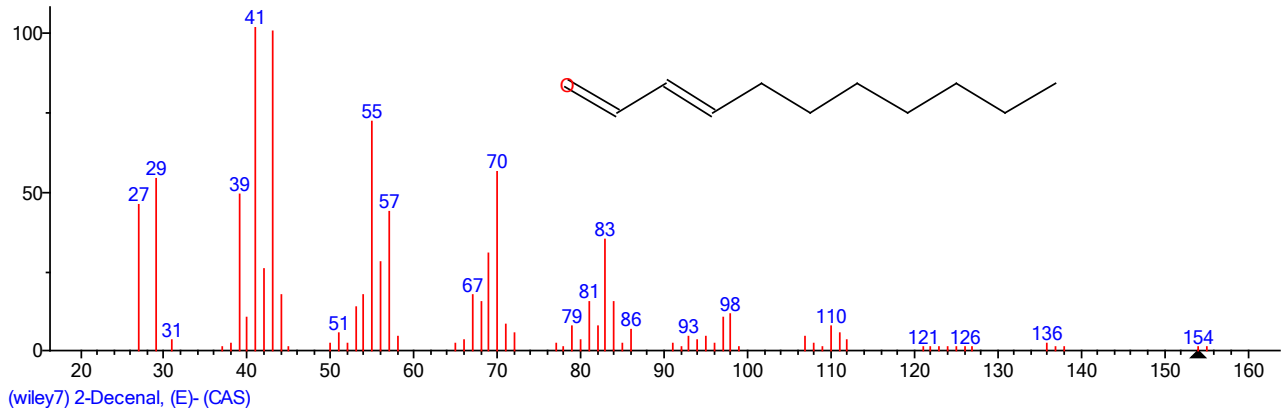
E-2-dodecenal



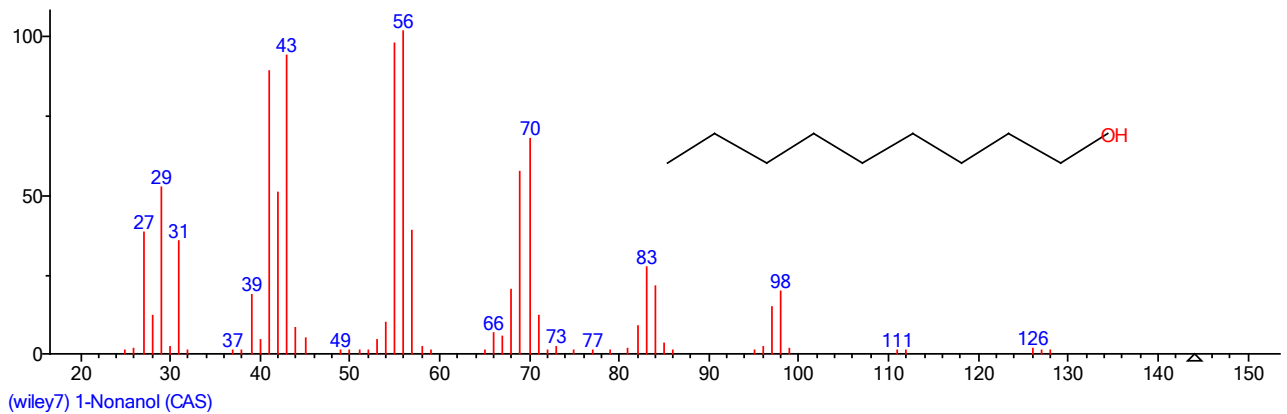
Tetradecanal



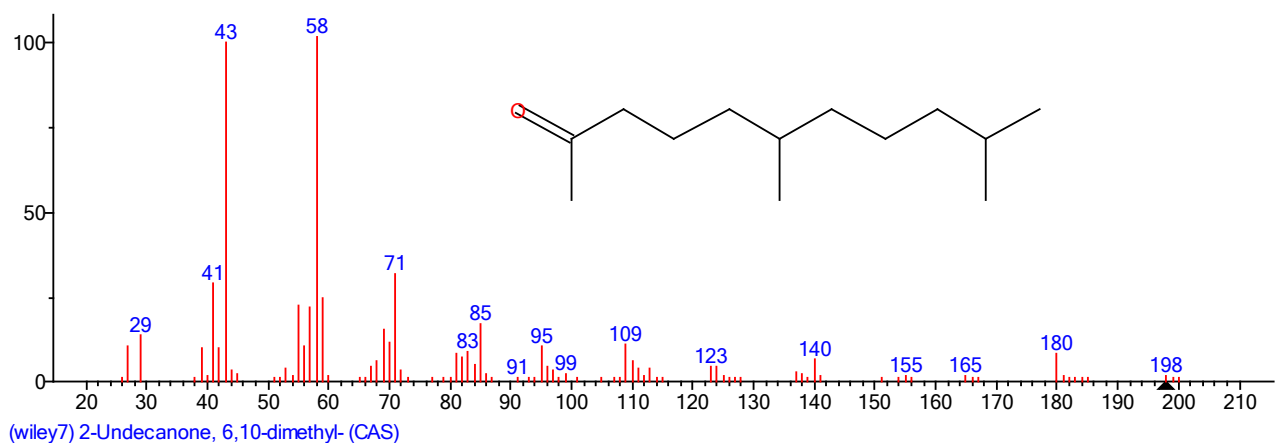
trans-2-Decenal



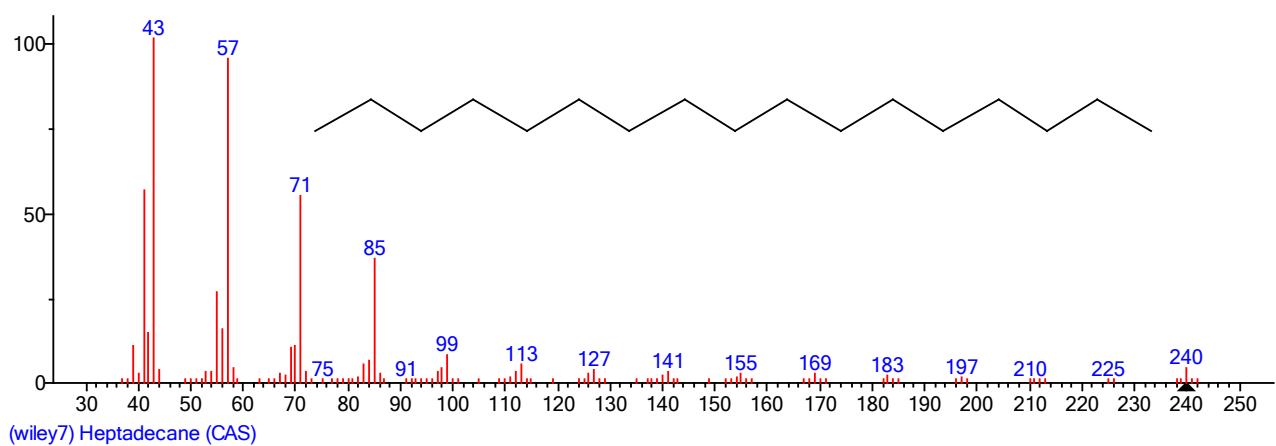
1-Nonanol



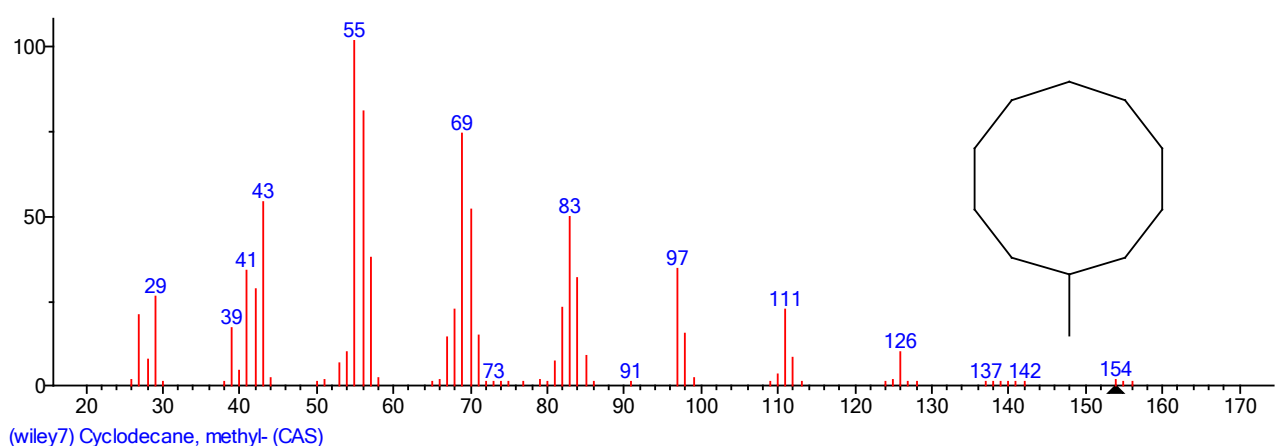
6,10-Dimethyl-2-undecanone



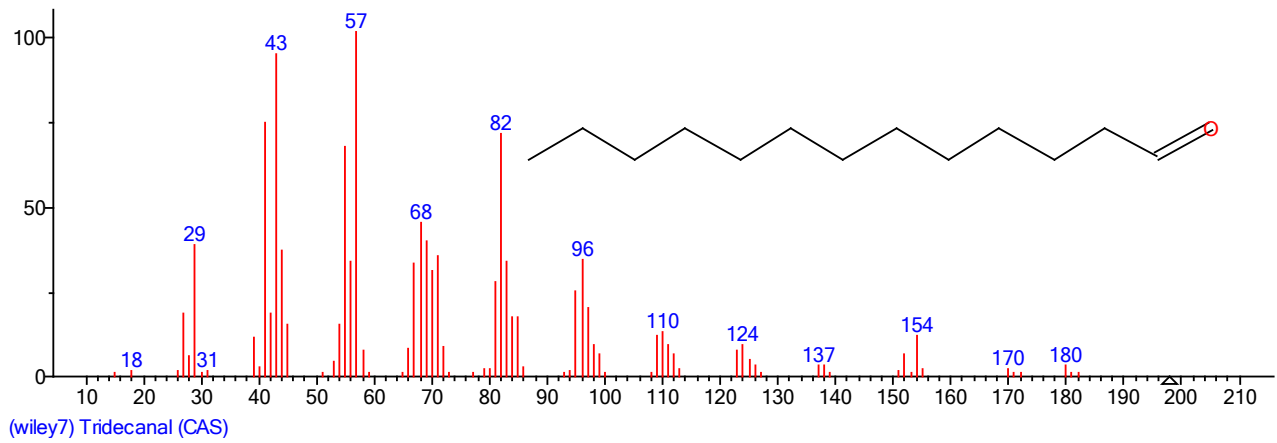
Heptadecane



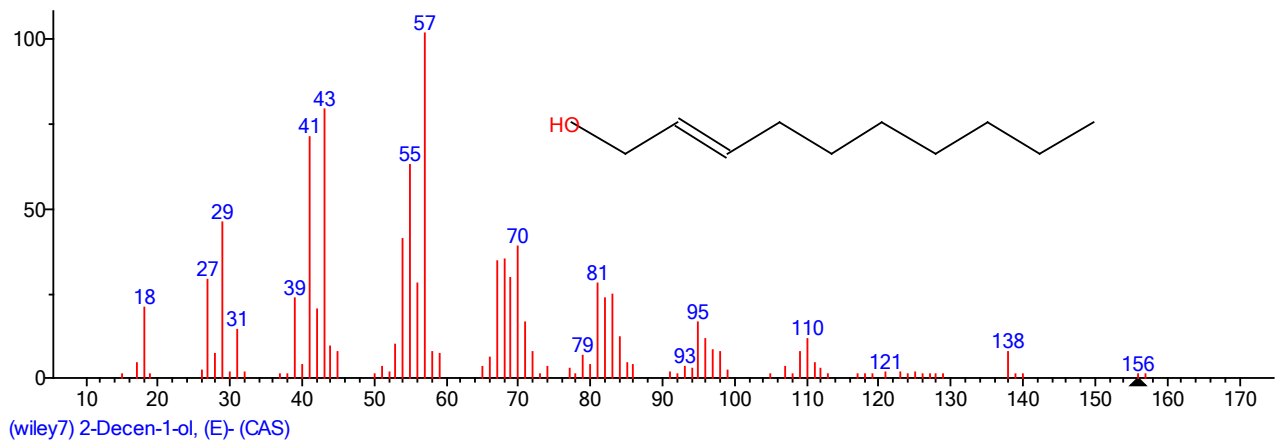
Methylcyclodecane



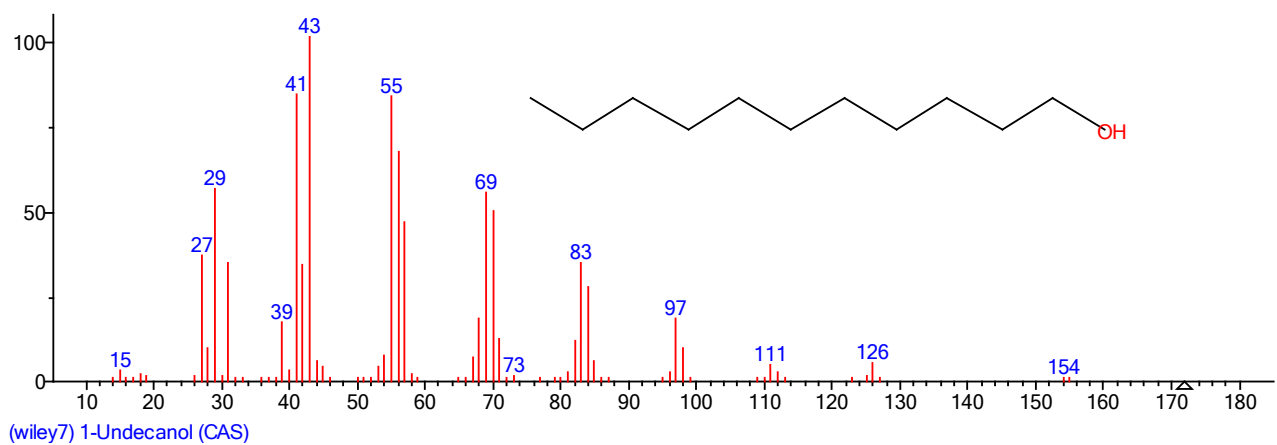
Tridecanal



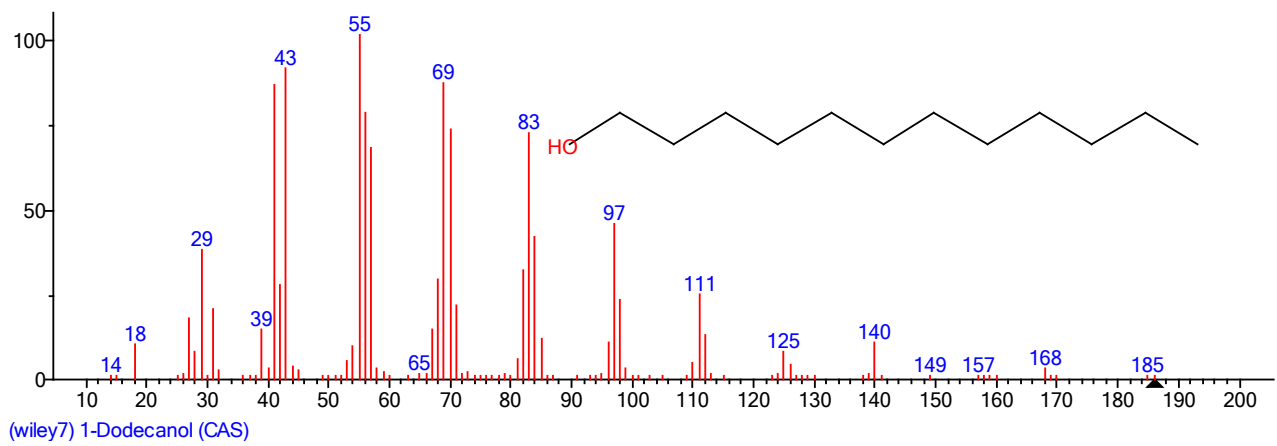
trans-2-Decenol



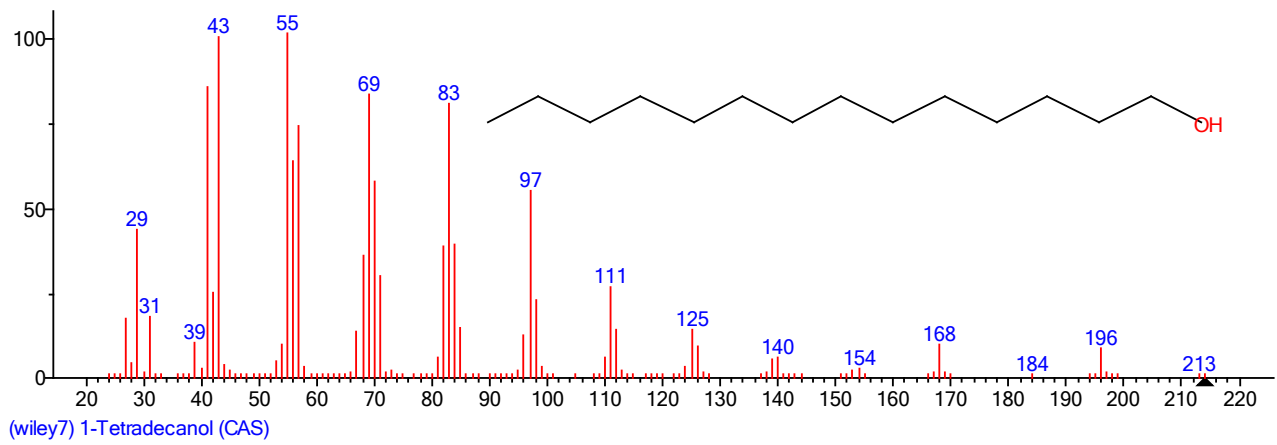
1-Undecanol



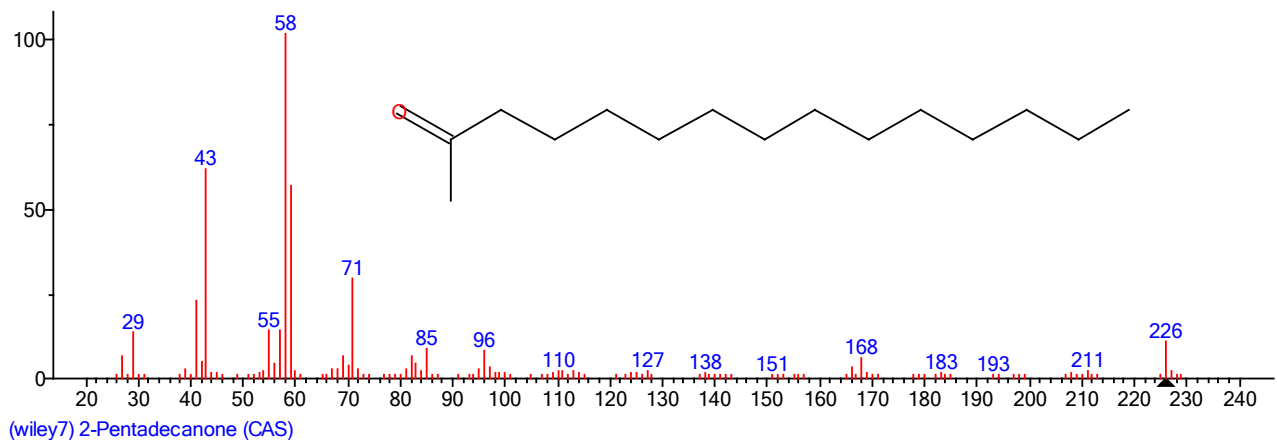
1-Dodecanol



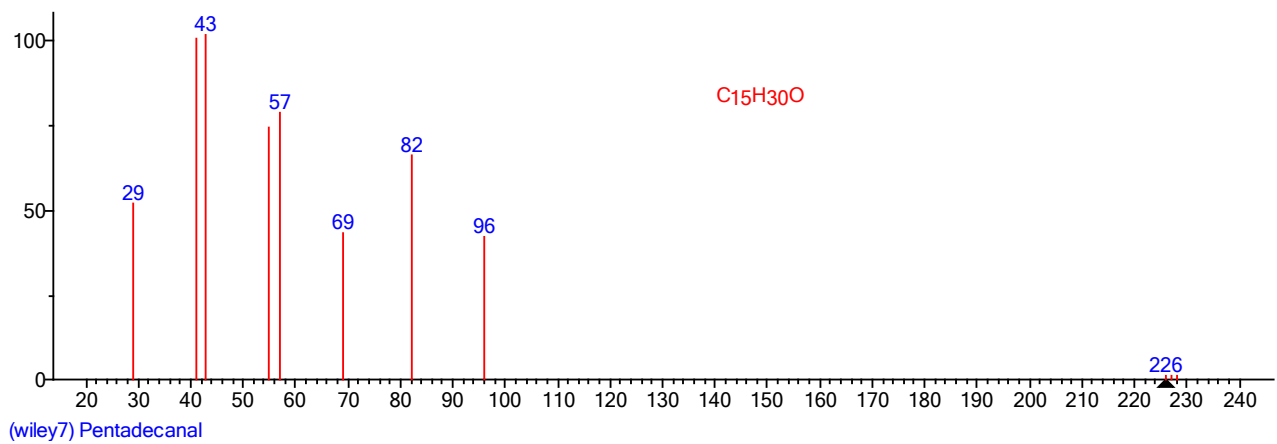
1-Tetradecanol



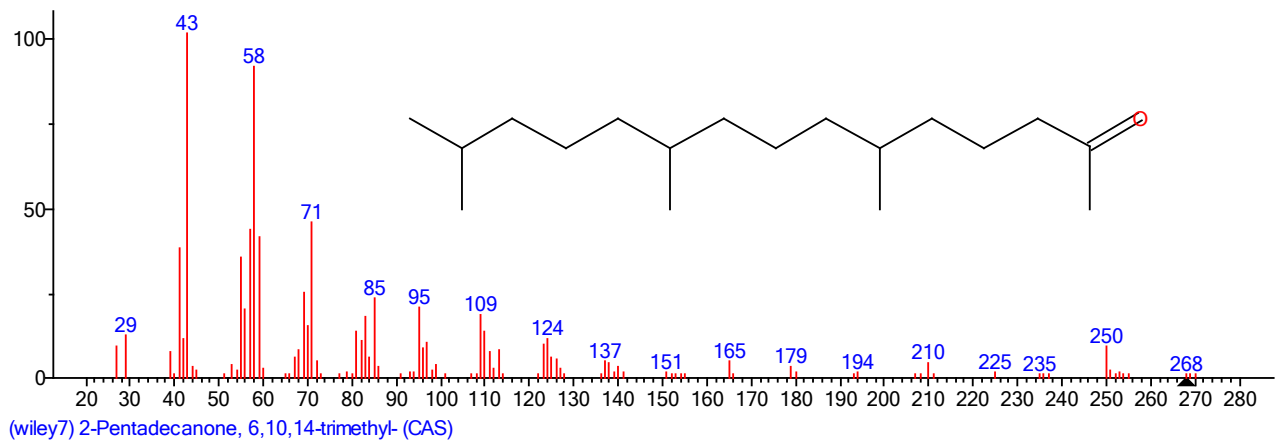
2-Pentadecanone



Pentadecanal



6,10,14-Trimethyl-2-pentadecanone



1-octanol

