

Supplementary Material

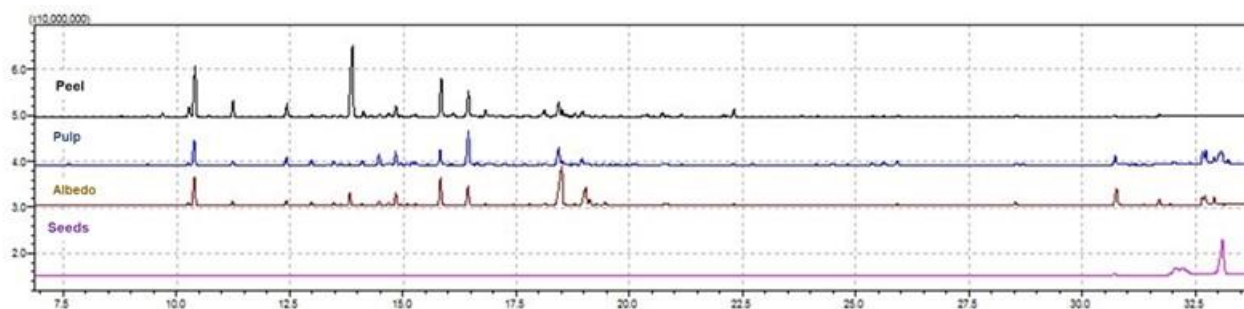


Figure S1. GC-MS Profiles of PPAS parts n-hexane extracts

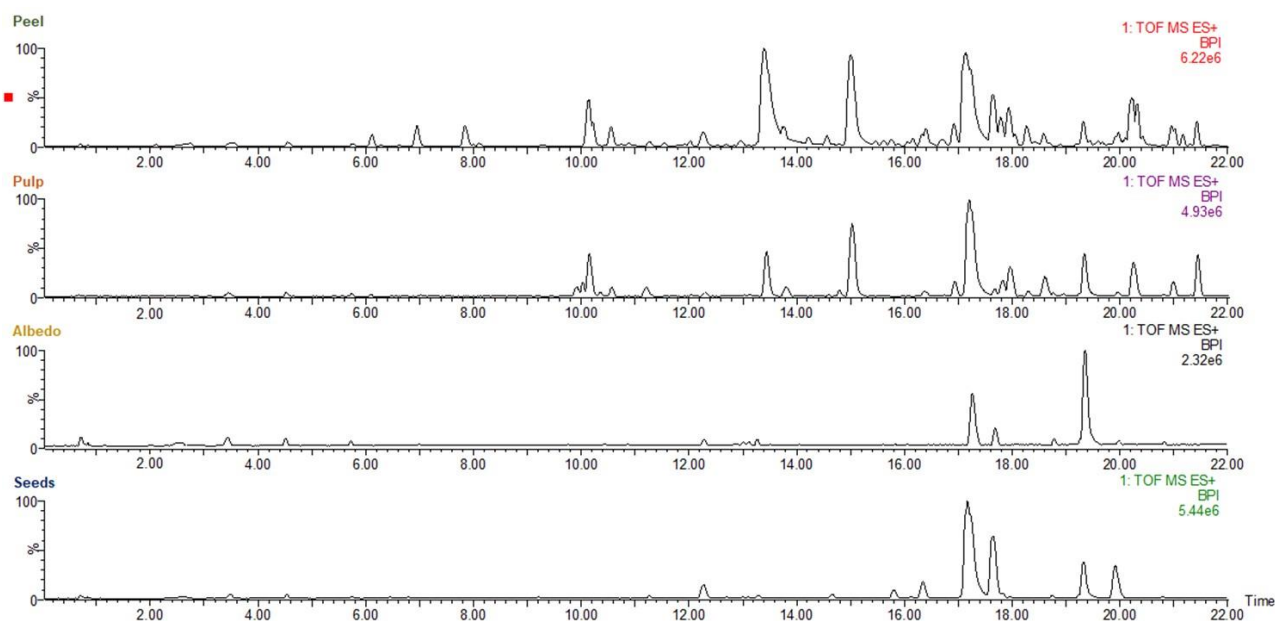


Figure S2. UPLC-HRMS profiles of PPAS parts chloroform extracts

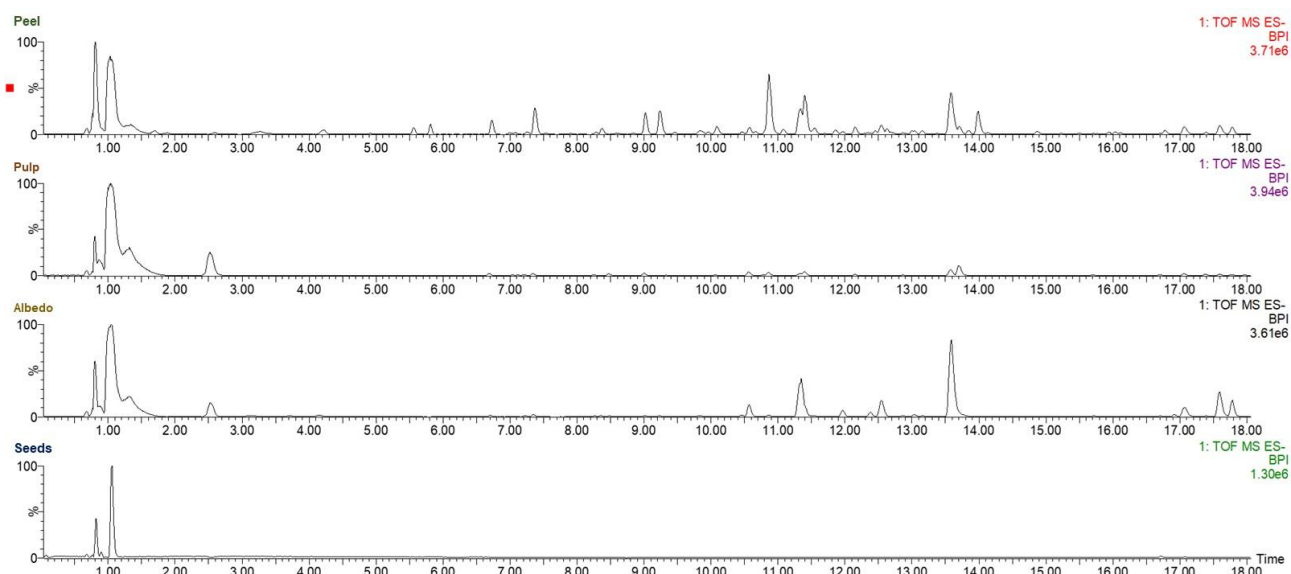


Figure S3. UPLC-HRMS profiles of PPAS parts methanol/water (50% v/v) extracts

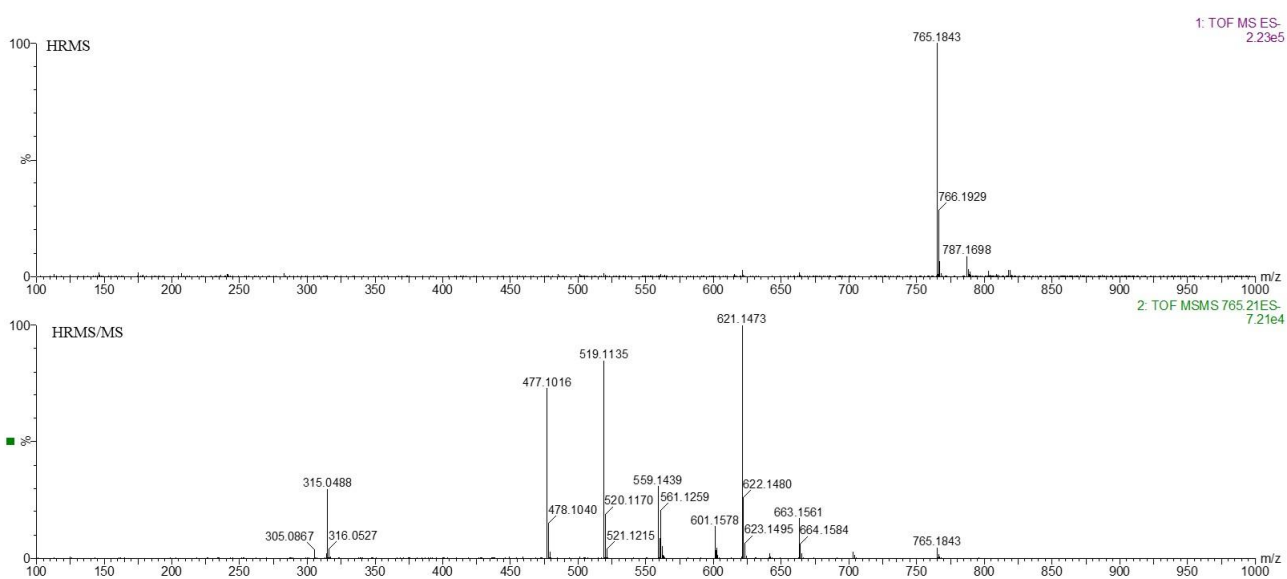


Figure S4. MS/HRMS spectra of compound 91

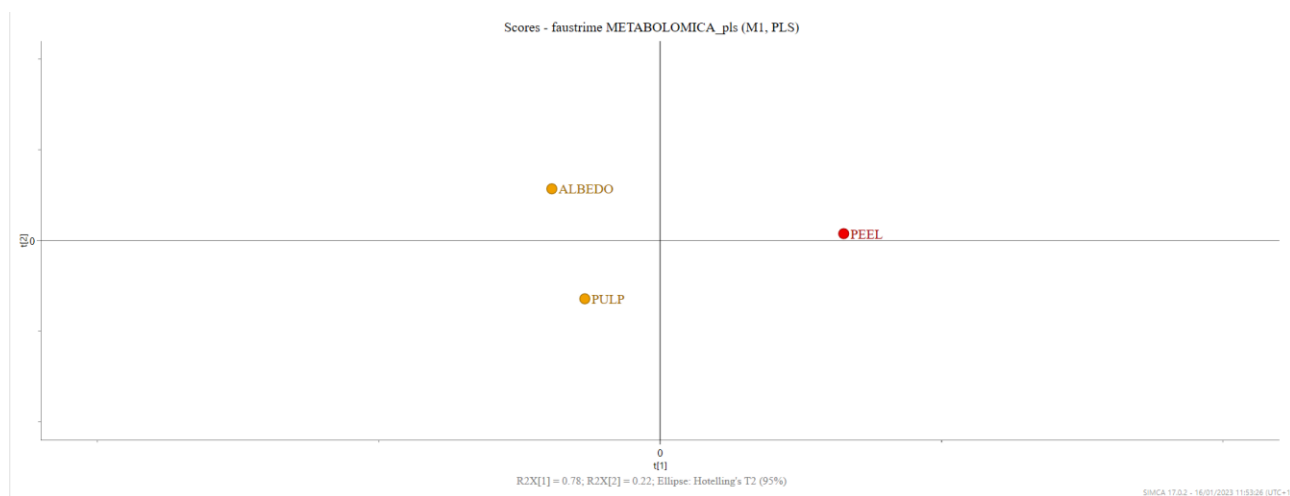


Figure S8. PLS Score Plot

Table S1. Calibration curves for semi-quantitative analysis

Compounds	Linearity ($\mu\text{g mL}^{-1}$)	Calibration Equation	R ²
rutin	0.1-50	$Y=182.694x - 36.526$	0.9997
eriocitrin	0.1-50	$Y=428.088x - 20.987$	0.9999
quercetin	0.1-50	$Y=265.73x - 181.44$	0.9969
coumarin	0.1-50	$Y=1254.7x - 177.710$	0.9999
luteolin	0.1-50	$Y=456.827 - 219.854$	0.9985
naringenin	0.1-50	$Y=754.721x - 99.974$	0.9999
apigenin	0.1-50	$Y=668.092x - 143.878$	0.9999
hesperetin	0.1-50	$Y=799.606x - 186.279$	0.9997