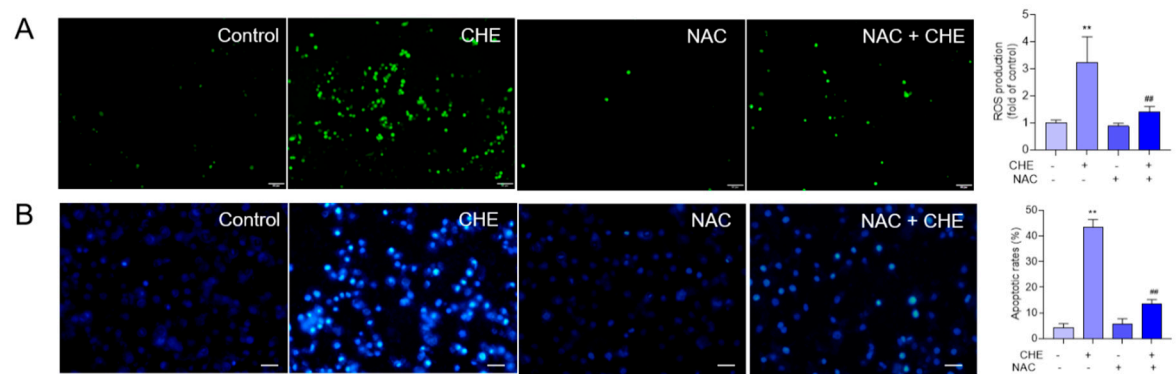


Suppl. Materials and Methods.



Suppl. Figure S1 NAC supplementation attenuates CHE-induced the production of ROS and apoptosis in HepG2 cells. A, the levels of ROS production. B, Measurement of cell apoptosis. The representative images were obtained using a fluorescence microscope. All results were presented as mean \pm SD (n =3 independent experiments). *P<0.05 or **P<0.01, compared to the control group. Scale Bar=25 μ m.