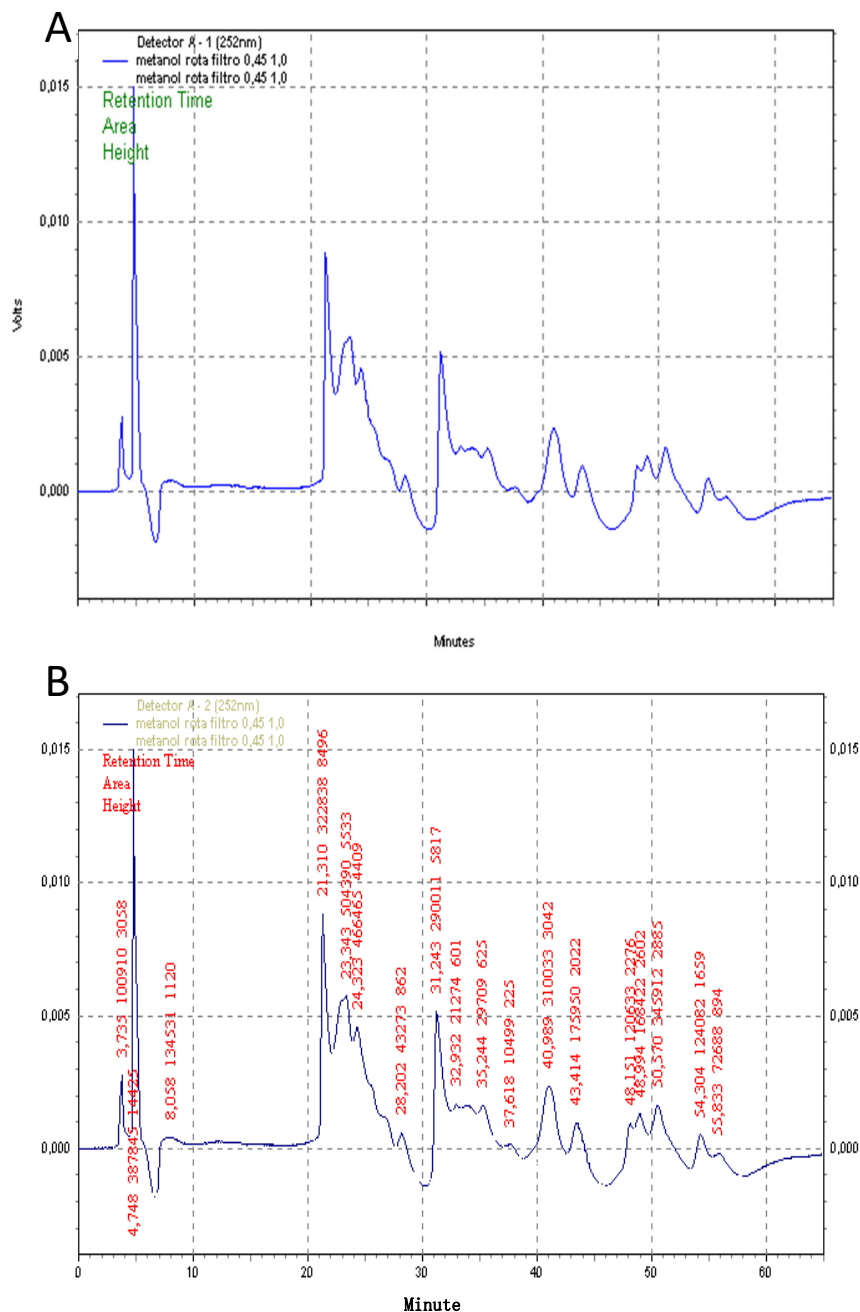


Supplementary Material

Supplementary Figure S1. Fingerprint composition of the *Ganoderma lucidum* (GI) mushroom methanolic extract by Chromatogram High Performance Liquid Chromatography. In (A) general chromatogram; (B) chromatogram with retention times.



Supplementary Figure S2. Fingerprint composition of the *Ganoderma lucidum* (GI) mushroom chloroform extract by Chromatogram High Performance Liquid Chromatography. In (A) general chromatogram; (B) chromatogram with retention times.

