



Supplementary Material for:

Extra Virgin Olive Oil Extracts of Indigenous Southern Tuscany Cultivar Act as Anti-inflammatory and Vasorelaxant Nutraceuticals

Luca Pozzetti ¹, Francesca Ferrara ², Ludovica Marotta ¹, Sandra Gemma ¹, Stefania Butini ¹, Mascia Benedusi ², Fabio Fusi ¹, Amer Ahmed ³, Serena Pomponi ⁴, Stefano Ferrari ⁵, Matteo Perini ⁶, Anna Ramunno ⁷, Giacomo Pepe ⁷, Pietro Campiglia ⁷, Giuseppe Valacchi ^{8,9,10}, Gabriele Carullo ^{1,*} and Giuseppe Campiani ^{1,*}

Contents

Table S1. Primer Sequences

Figure S1. Representative ¹H-NMR spectrum of OE_15

Figure S2. OE_05 λ :280 nm

Figure S3. OE_10 λ :280 nm

Figure S4. OE_15 λ :280 nm

Table S2. Method validation parameters for quantitation by RP-UHPLC-PDA of flavones in olive oil extracts

Table S1. Primer sequences

Gene	Forward sequence	Reverse sequence
GPx1	CAACCAGTTTGGGCATCAG	TCTCGAAGAGCATGAAGTTGG
NQO1	CTGATCGTACTGGCTCACTC	AACAGACTCGGCAGGATAC
IL-6	TAGGACTGGAGATGTCTGAGGCT	GACCGAAGGCGCTTGTGGA
COX-2	TTCAAATGAGATTGTGGGAAAATT	ATATCATCTCTGCCTGAGTATCTT
β -actin	ATTGCCGACAGGATGCAGA	AGTACTTGCGCTCAGGAGGA

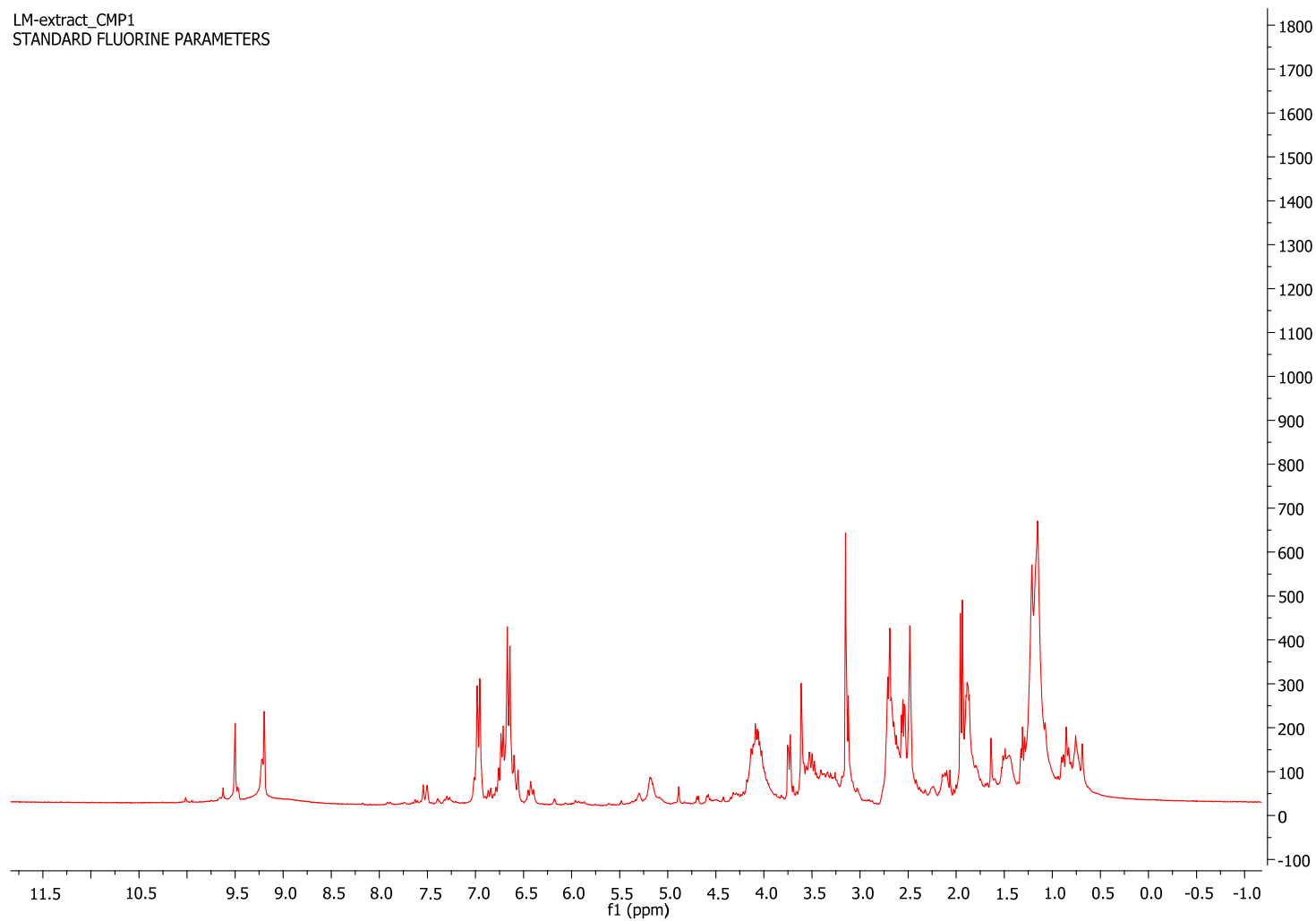
Figure S1. Representative ^1H -NMR spectrum of OE_15

Figure S2. OE_05 λ :280 nm

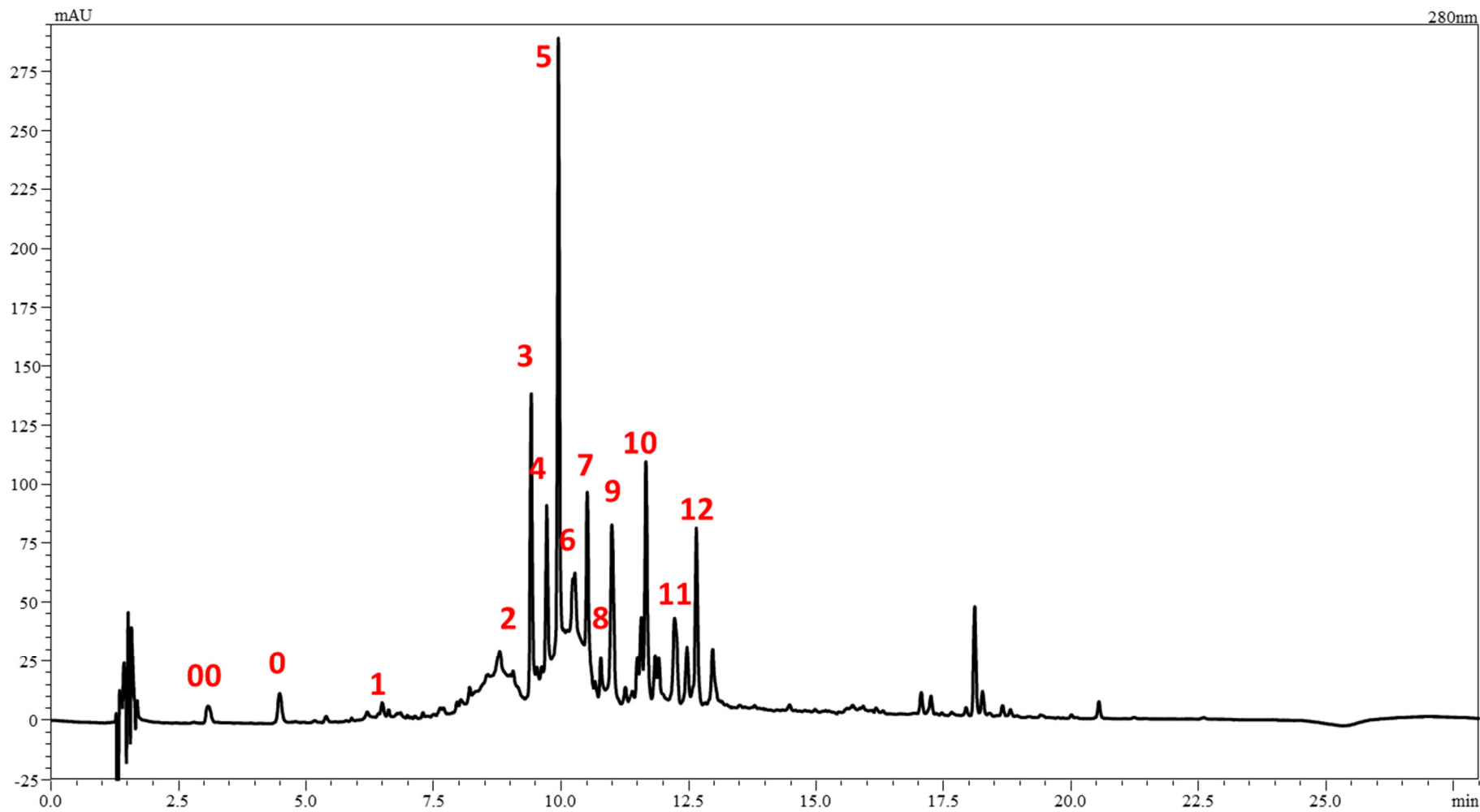


Figure S3. OE_10 λ :280 nm

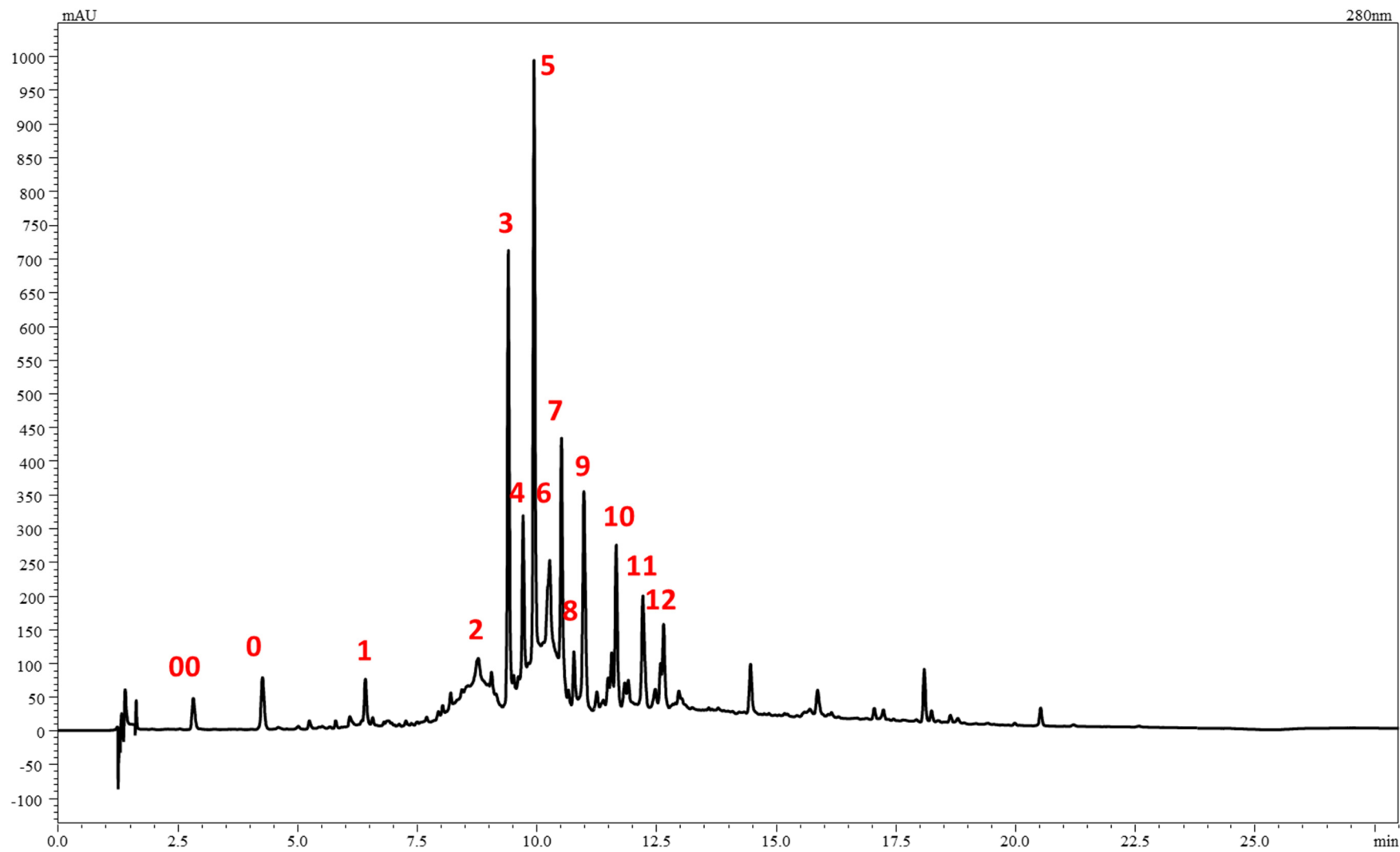


Figure S4. OE_15 λ :280 nm

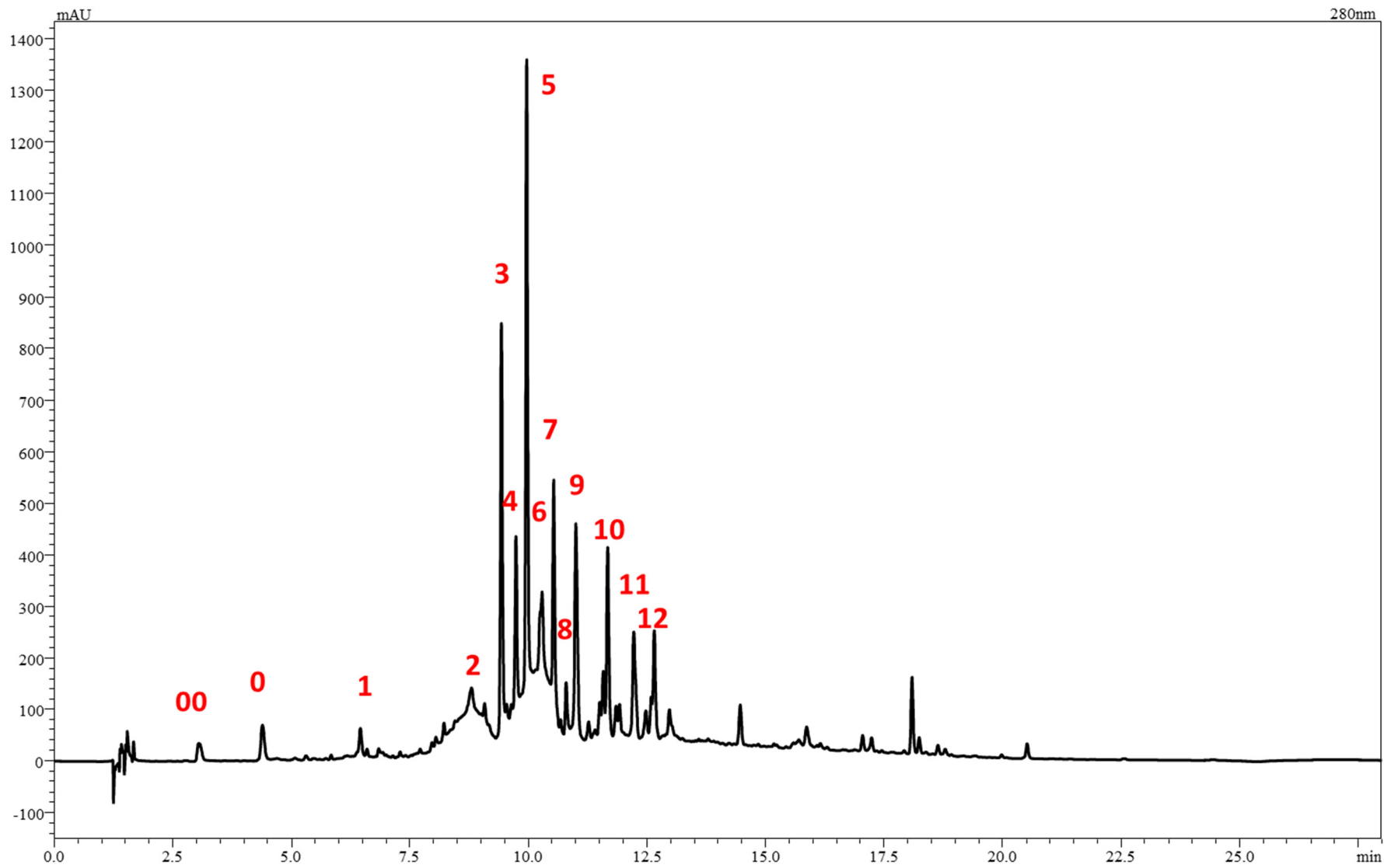


Table S2. Method validation parameters for quantitation by RP-UHPLC-PDA of flavones in olive oil extracts

Parameters		Luteolin		Apigenin	
Retention time (min) (<i>n</i> = 4)		9.41 ± 0.01		10.51 ± 0.01	
Regression equation		$y = 0.000036x + 0.059537$		$y = 0.000029x - 0.159557$	
Correlation coefficient (<i>R</i> ²)		≥ 0.9999		≥ 0.9999	
LOD (μM)		0.06		0.01	
LOQ (μM)		0.17		0.04	
	Analyte concentration (μM)	RSD (%)	Accuracy (%)	RSD (%)	Accuracy (%)
Intraday (<i>n</i> = 3)	10	0.2%	99.7%	0.1%	102.1%
	20	0.4%	98.7%	0.1%	100.9%
	50	0.2%	98.7%	0.1%	101.7%
Interday (<i>n</i> = 3)	10	0.4%	98.8%	0.2%	100.9%
	20	0.1%	98.9%	0.1%	101.4%
	50	0.2%	98.8%	0.1%	102.5%
<p><i>Y</i>: concentration of tested compounds; <i>X</i>: peak area at 330 nm</p> <p>LOQ: 10 × standard deviation of the response/slope of calibration curve</p> <p>LOD: 3.3 × standard deviation of the response/slope of calibration curve</p>					

Extract	Luteolin (mg/g)	Apigenin (mg/g)
OE_05	0.53 ± 0.01	0.24 ± 0.01
OE_10	0.42 ± 0.01	0.17 ± 0.01
OE_15	1.99 ± 0.06	0.82 ± 0.03

