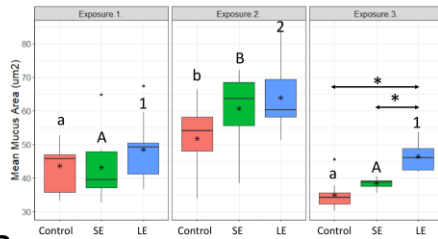
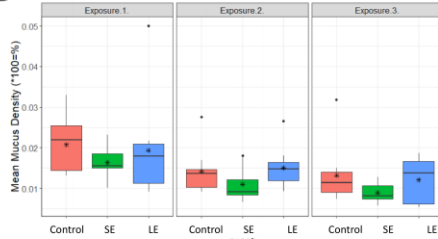
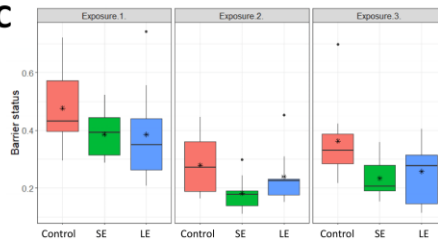
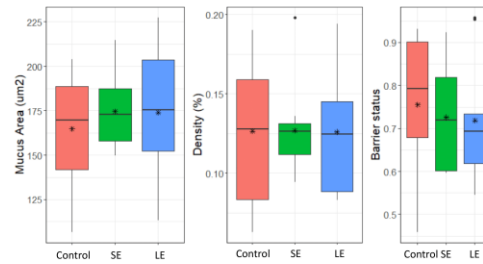


**A****B****C****D**

Supplementary Figure 1. Key mucosal morphometries of the gills and skin. (A–C) Gill samples were taken 24 h after each exposure, while (D) skin samples were only analysed after the 3rd exposure. Mean mucous area, density, and barrier status were measured using Quantidoc's mucosal mapping method. N = 9 fish per treatment group. Please refer to Fig. 1 for the statistical notations. SE, short exposure (15 min); LE, long exposure (30 min).