



Supplementary Material

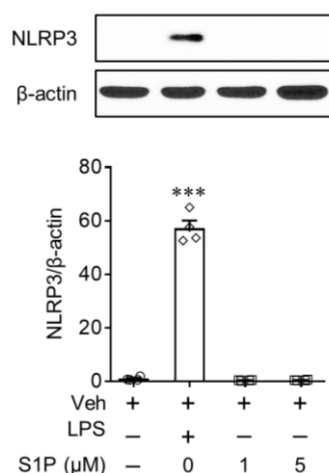


Figure S1. S1P itself does not affect NLRP3 upregulation in normal BMDMs. Cells were exposed to LPS (500 ng/mL, a positive control) or S1P (1 and 5 μM) for 24 h. Effects of S1P on NLRP3 expression in BMDMs were determined by Western blot analysis. $n = 4$ per group. *** $p < 0.001$ versus control BMDMs (Veh).

Table S1. Primer sets used for qPCR analysis in this study.

Gene.	Accession Number	Sequence
S1P ₁ (M)	NM_007901.5	Forward: 5'-AGG GAA CTT TGC GAG TGA G-3' Reverse: 5'-GTT ACA GCA AAG CCA GGT CAG-3'
S1P ₂ (M)	NM_010333.4	Forward: 5'-ATA GAC CGA GCA CAG CCA AC-3' Reverse: 5'-GTG TTC CAG AAC CTT CTC AGG-3'
S1P ₃ (M)	NM_010101.4	Forward: 5'-TTG CAG AAC GAG AGC CTA TT-3' Reverse: 5'-TTC CCG GAG AGT GTC ATT TC-3'
S1P ₄ (M)	NM_010102.2	Forward: 5'-ACC TTC AGT CTG CTC TTC ACG-3' Reverse: 5'-AAG AGC ACA TAG CCC TTG GAG-3'
S1P ₅ (M)	NM_053190.2	Forward: 5'-AGA TTT CCA ATA GCC GCT CTC-3' Reverse: 5'-AGC TTG CCG GTG TAG TTG TAG-3'
β-actin (M)	NM_007393.5	Forward: 5'-AGC CTT CCT TCT TGG GTA TG-3' Reverse: 5'-CTT CTG CAT CCT GTC AGC AA-3'
GAPDH (M)	NM_001289726.1	Forward: 5'-TTG ATG GCA ACA ATC TCC AC-3' Reverse: 5'-CGT CCC GTA GAC AAA ATG GT-3'