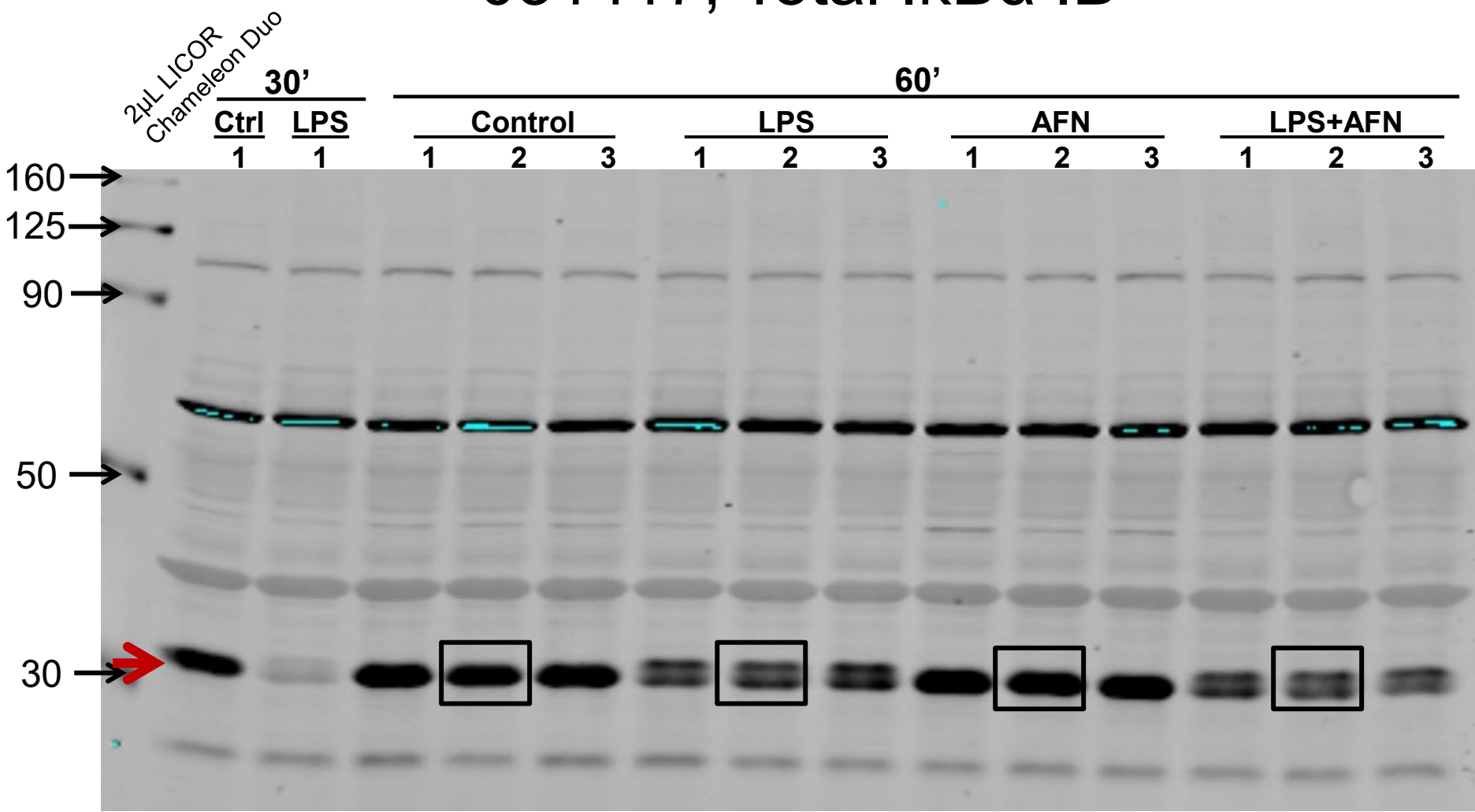


**Figure 3 a**

# 031417, Total IκBα IB

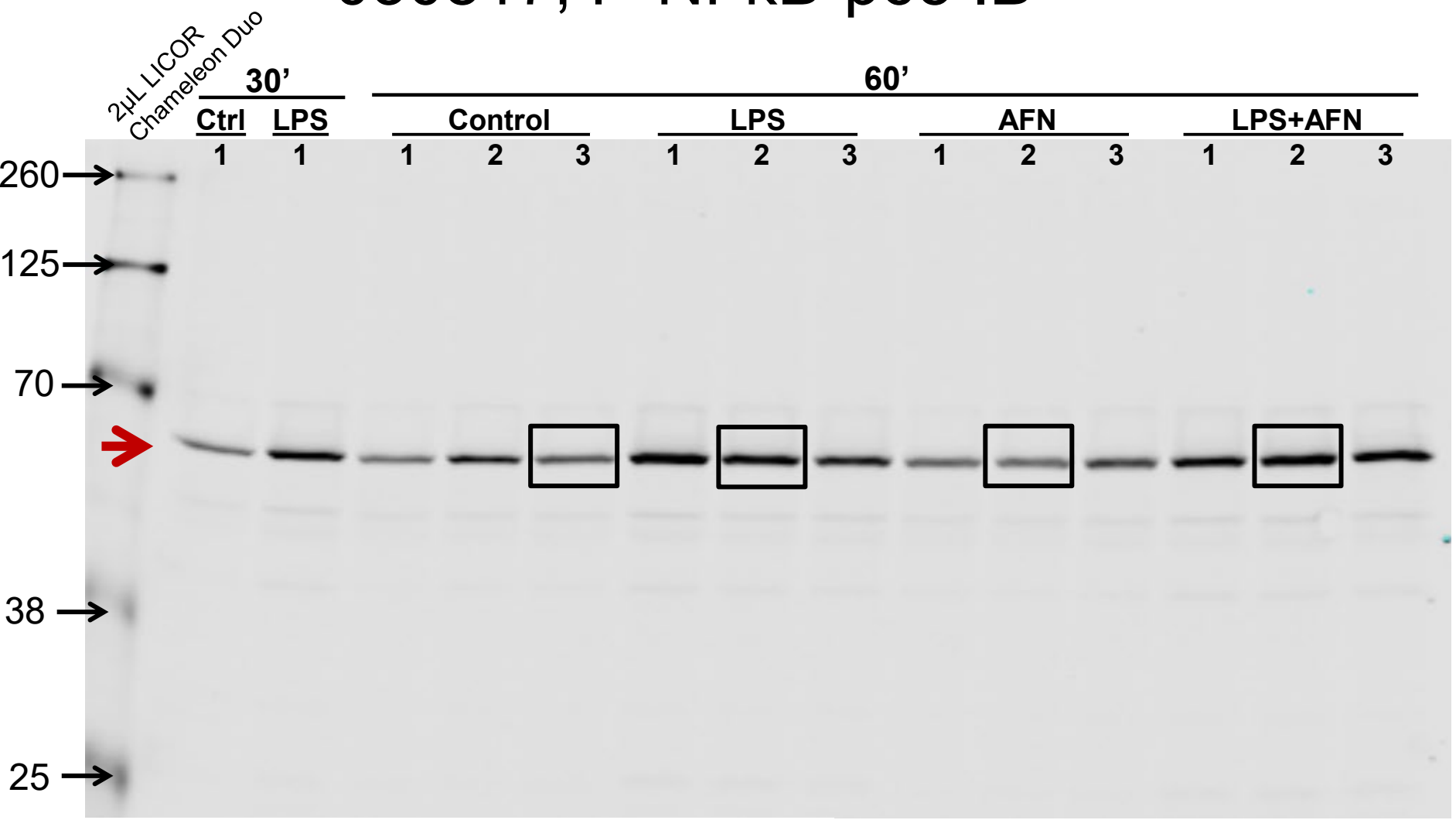


10% SDS PAGE  
50µg per lane  
1hr 100V, 4deg Transfer to Nitrocellulose Membrane  
1hr block, rm temp, in 5% Milk-TBST  
O/N, 4 deg, IκBα (1:1,000) in 5% Milk-TBST  
1hr, rm temp, Anti-Mouse 680RD (1:20,000) in 5% Milk-TBST

Expected Size: 40 kDa

Figure 3 b

030817, P-NFκB-p65 IB



10% SDS PAGE  
50µg per lane  
1hr 100V, 4deg Transfer to Nitrocellulose Membrane  
1hr block, rm temp, in 5% Milk-TBST  
O/N, 4 deg, P-NFκB-p65 (1:1,000) in 5% BSA-TBST  
1hr, rm temp, Anti-Rabbit 800CW (1:20,000) in 5% Milk-TBST

Expected Size: 65 kDa

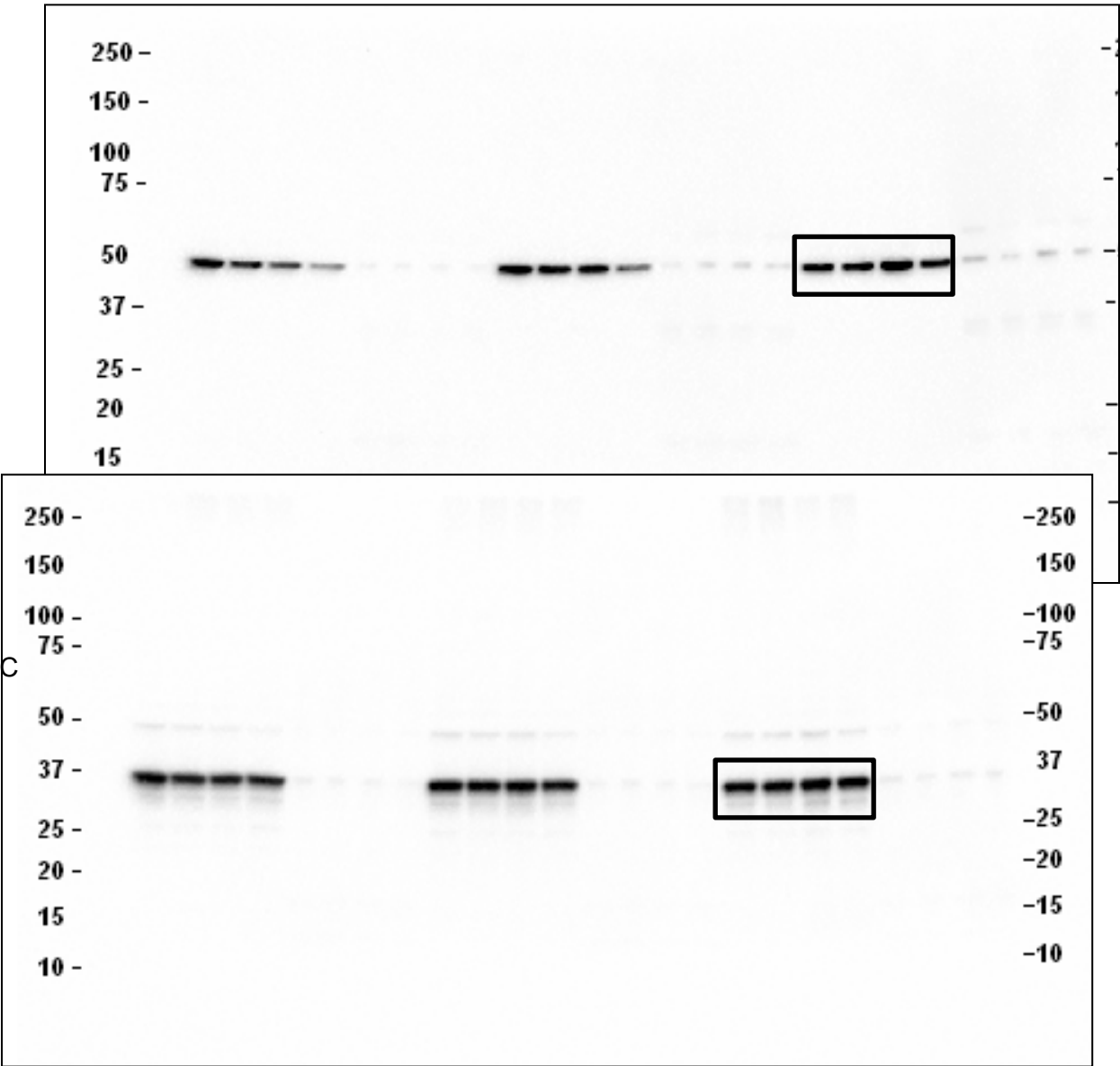
**Figure 3 c**

LPS	-	+	-	+	-	+	-	+	-	+	-	+	-	+	-	+	-	+	-	+	-	+	-	+
AFN	-	-	+	+	-	-	+	+	-	-	+	+	-	-	+	+	-	-	+	+	-	-	+	+
Fraction	C	C	C	C	N	N	N	N	C	C	C	C	N	N	N	N	C	C	C	C	N	N	N	N

IkB-beta blot:  
1:1000 IκB-β in 5% milk TBST O/N in 4 °C  
1:5000 mouse IgG-HRP from R&D  
Exposure 17 seconds

IκB-beta:  
Santa Cruz sc-74451  
IκB-β (D-3)

Expected size: 45kDa

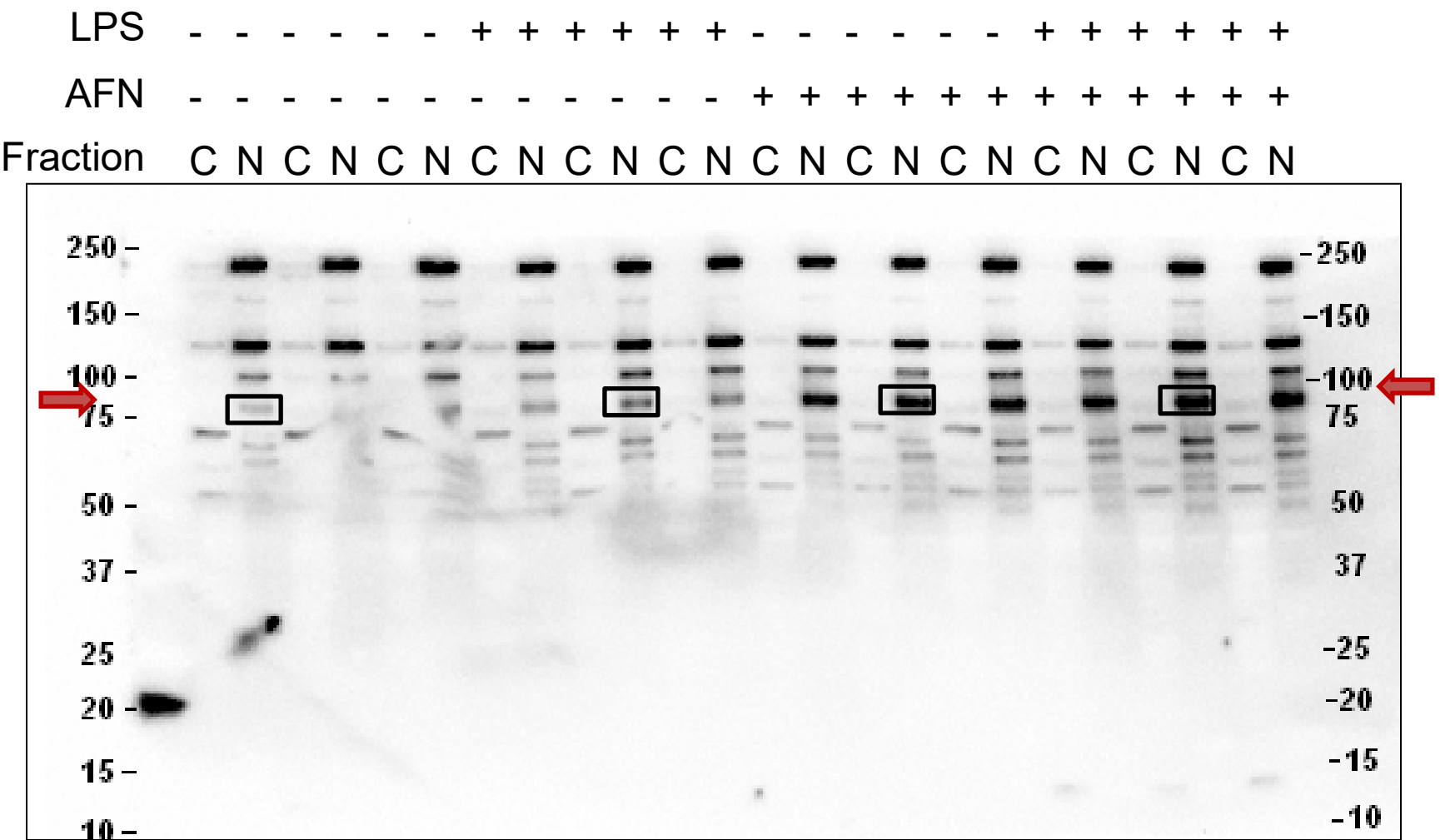


GAPDH blot:  
1:4000 GAPDH in 5% BSA TBST O/N in 4 °C  
1:5000 mouse IgG-HRP from R&D  
Exposure 1.1 seconds

GAPDH details:  
Millipore MsxGAPDH MAB374  
Mouse monoclonal  
Lot# 2430317

Expected size: 36kDa

**Figure 6 a - Nrf2**  
**1 hour treated samples only (samples are paired with respective non-nuclear (C) and nuclear (N)):**

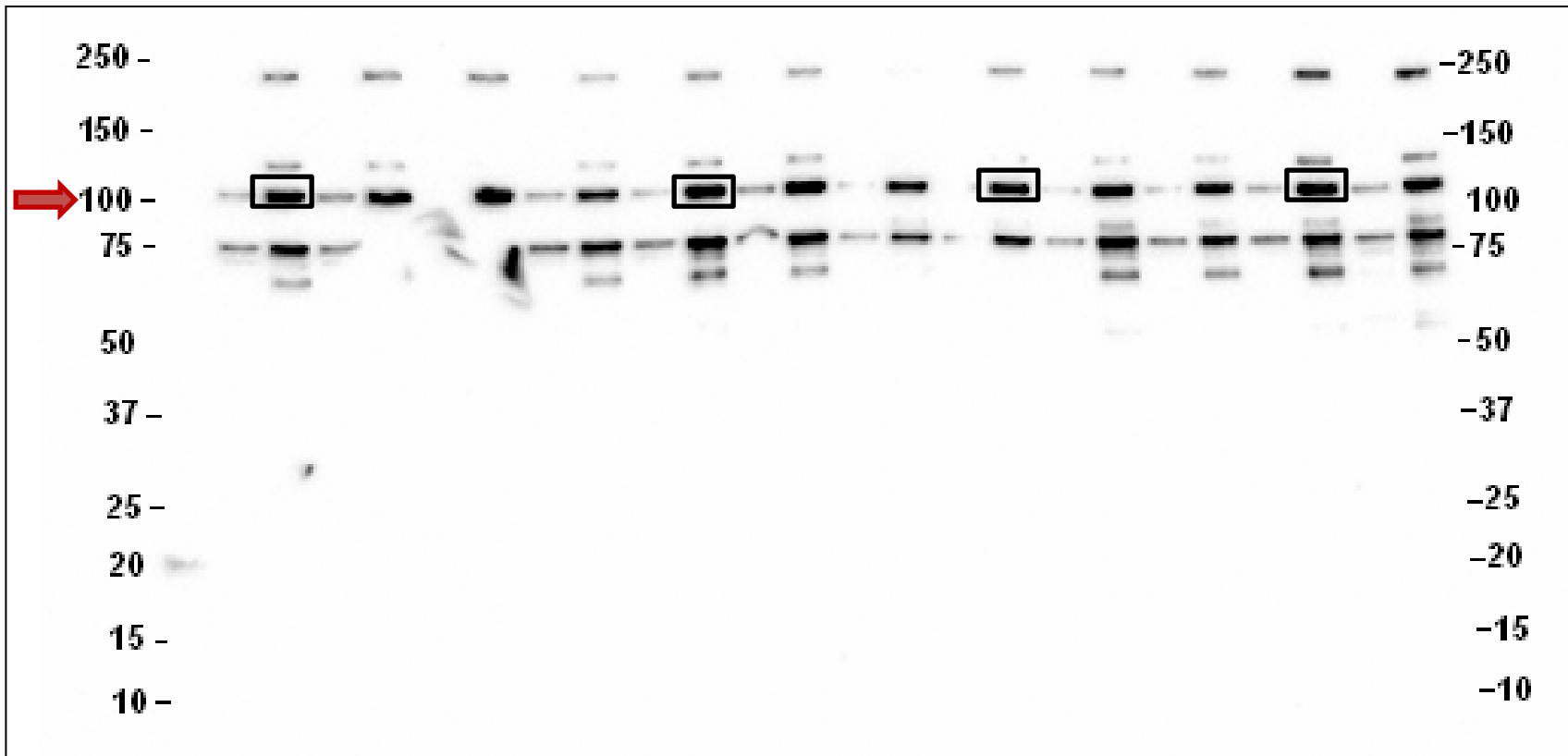


Blocked 5% milk TBST 1hr  
 1:500 Nrf2 overnight  
 1:5000 anti-Rabbit HRP 1 hr  
 Exposure was ~25sec

Nrf2 Expected Size: 80 kDa

Figure 6 a - Nucleolin

LPS	-	-	-	-	-	-	+	+	+	+	+	+	-	-	-	-	-	-	+	+	+	+	+	+
AFN	-	-	-	-	-	-	-	-	-	-	-	-	+	+	+	+	+	+	+	+	+	+	+	+
Fraction	C	N	C	N	C	N	C	N	C	N	C	N	C	N	C	N	C	N	C	N	C	N	C	N



Anti-Nucleolin ab22758  
1:5000 5% milk TBST 2hr  
Anti-Rabbit-HRP 1:5000 in  
TBST 1 hr  
Exposure time was 0.27 sec

Expected size: 100 kDa