

Supplementary Materials

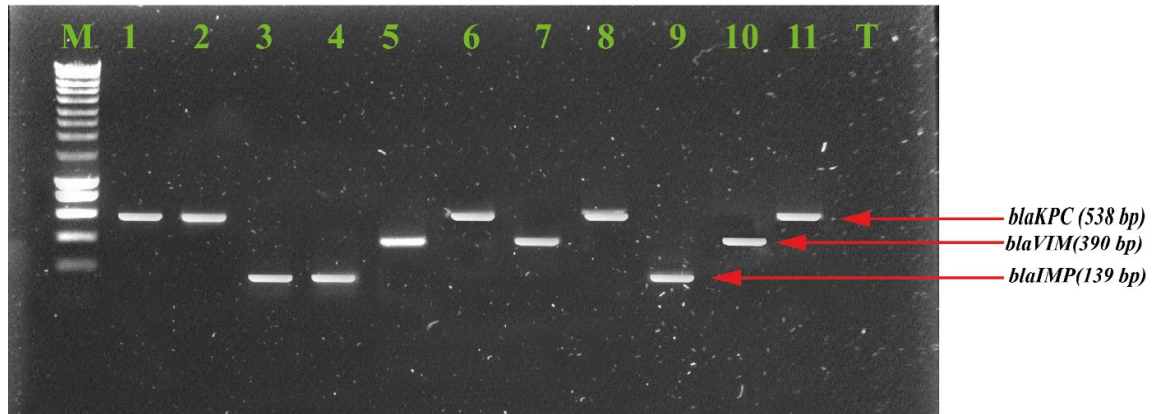


Figure S1: *blaKPC*, *blaVIM* and *blaKPC* genes detected in *E. coli* and *K. pneumoniae*.

Figure legend : Lane M = hyperladder 100 bp; Lane 3 and 4 = positive samples for *blaIMP* gene (139 pb), Lane 5 and 7 = positive samples for *blaVIM* gene (390 pb), Lane 1 2 6 and 8 = positive samples for *blaKPC* gene (538 pb), Lane 9 = *blaIMP* positive control (139 pb), Lane 10 = *blaVIM* positive control (390 pb), Lane 11 = *blaKPC* positive control (538 pb), T: *blaKPC* negative control (538 pb),

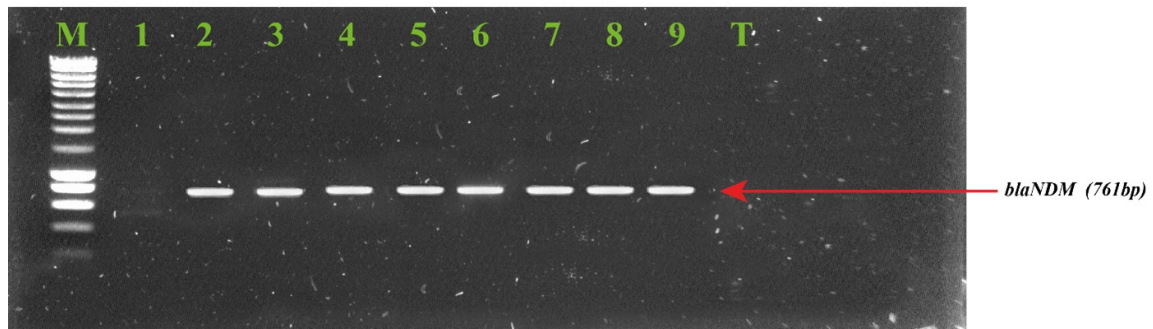


Figure S2: *blaNDM* gene detected in *E. coli* and *K. pneumoniae*.

Figure legend: Lane M = hyperladder (100 bp); Lane 1 = negative sample for *blaNDM* gene (761 pb), Lane 2 ;3 ;4 ;5 ;6 ;7 ; and 8 = positive samples for *blaNDM* gene (761 pb), Lane 9 = *blaNDM* positive control (761 pb), T: *blaNDM* negative control (761 pb).

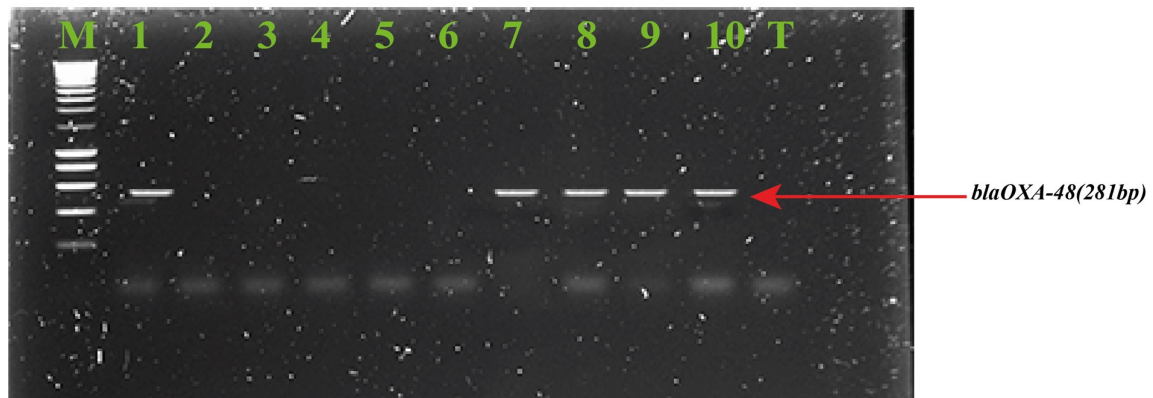


Figure S3: *blaOXA-48* gene detected in *E. coli* and *K. pneumoniae*.

Figure legend: Lane M = hyperlader (100 bp); Lane 2 ;3 ;4 ;5 and 6 = negative sample for *blaOXA-48* gene (281 pb), Lane 1 ;7 ;8 and 9 = positive samples for *blaOXA-48* gene (281 pb), Lane 10 = *blaOXA-48* positive control (281 pb), T: *blaOXA-48* negative control (281 pb).