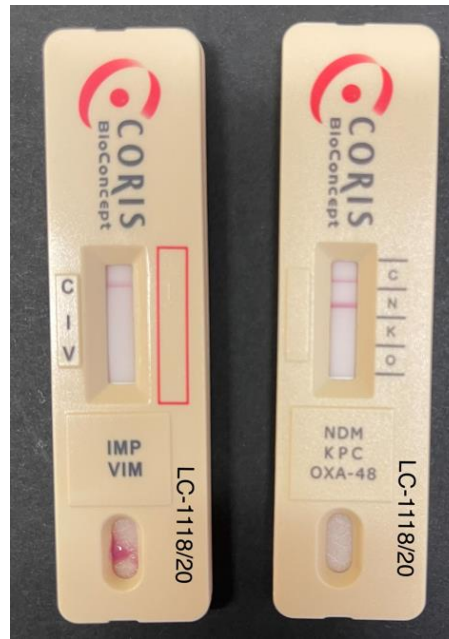


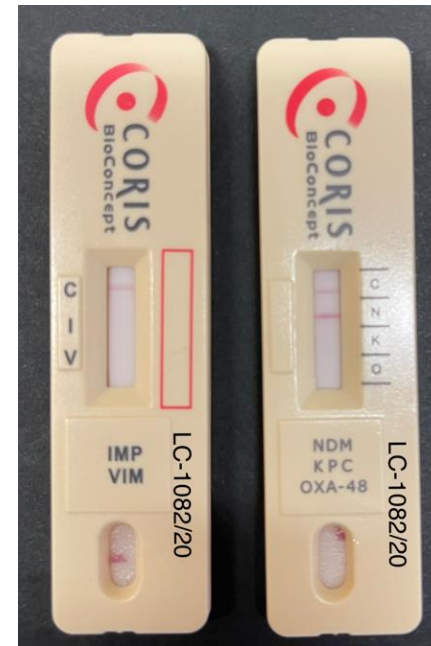
Proteus mirabilis RS



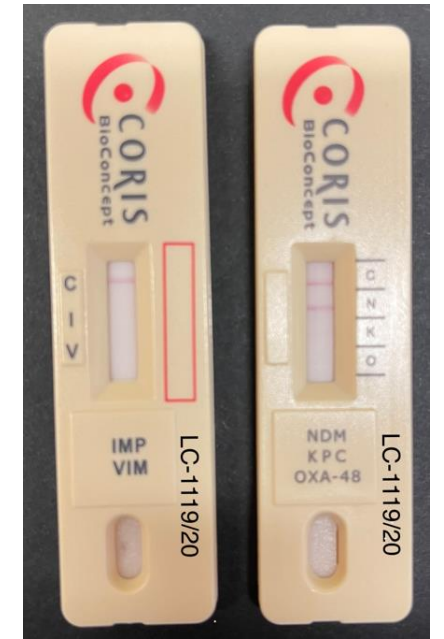
Klebsiella pneumoniae RS



Enterobacter cloacae SW

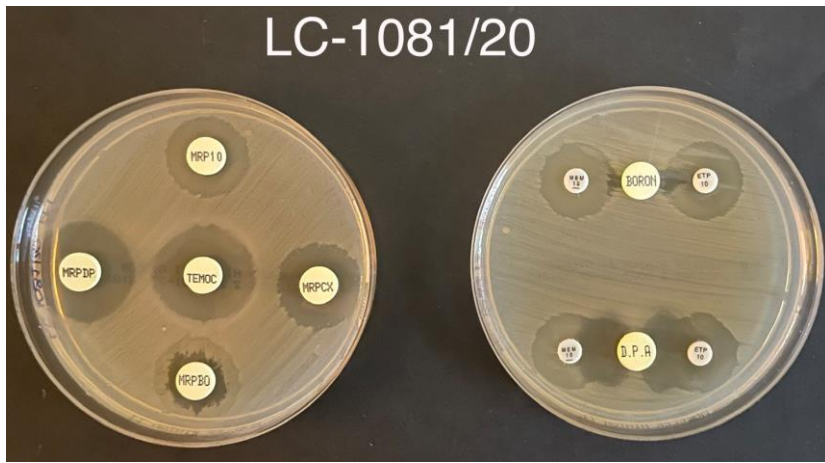


Enterobacter cloacae RS

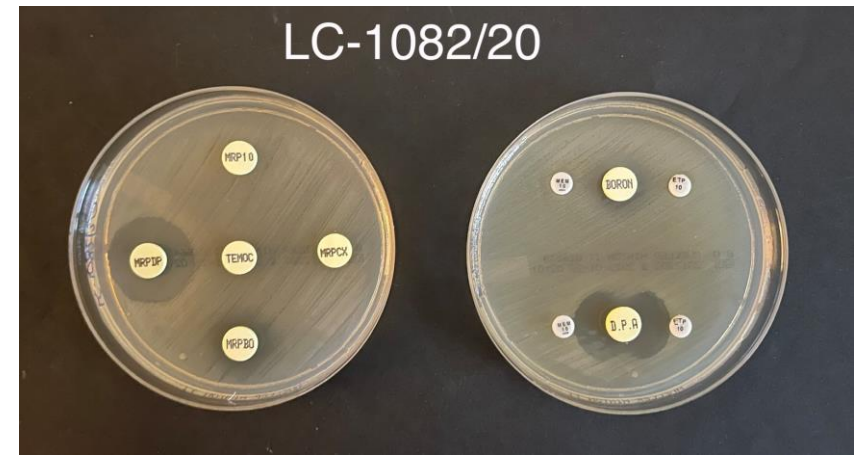


Proteus mirabilis SW

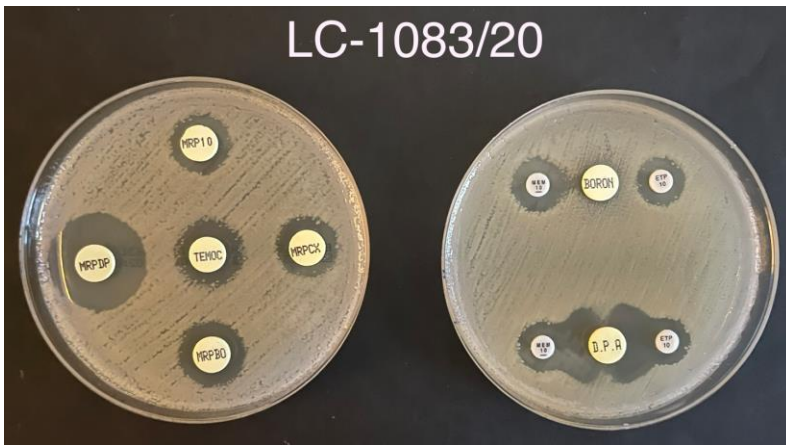
Figure S1. (a) Immunocromatographic test RESIST-4 O.K.N.V.I. (Coris BioConcept) to detect the presence of metallo- β -lactamases (MBLs)



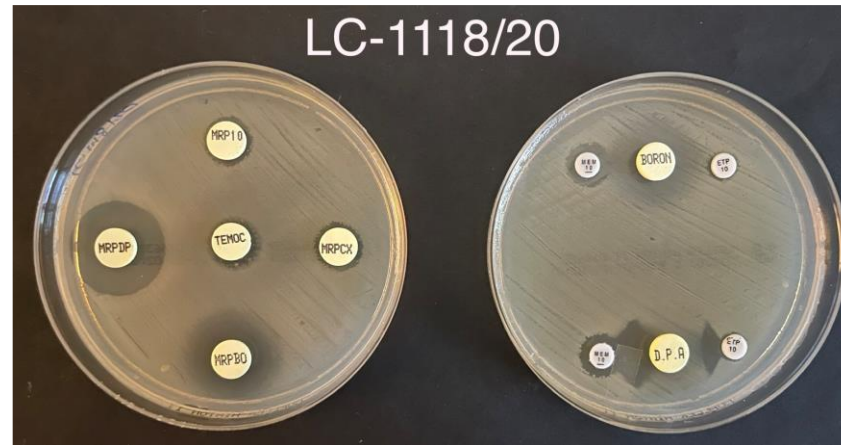
Proteus mirabilis RS



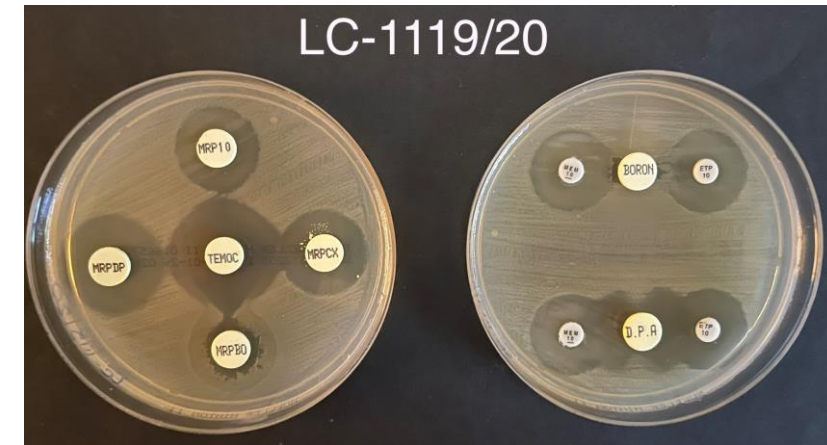
Enterobacter cloacae RS



Klebsiella pneumoniae RS



Enterobacter cloacae SW



Proteus mirabilis SW

Figure S1. (b) Phenotypically evaluation was performed on the basis of synergistic activity between meropenem and dipicolinic acid using both the double disk approximation test (Rosco Diagnostica A/S, Taastrup, Denmark) and a commercially available combination method (KPC + MBL Confirm ID Kit; Rosco Diagnostica A/S).