

Figure S1. Pan-genome analysis of ST46Pas *A. baumannii* strains using Roary.

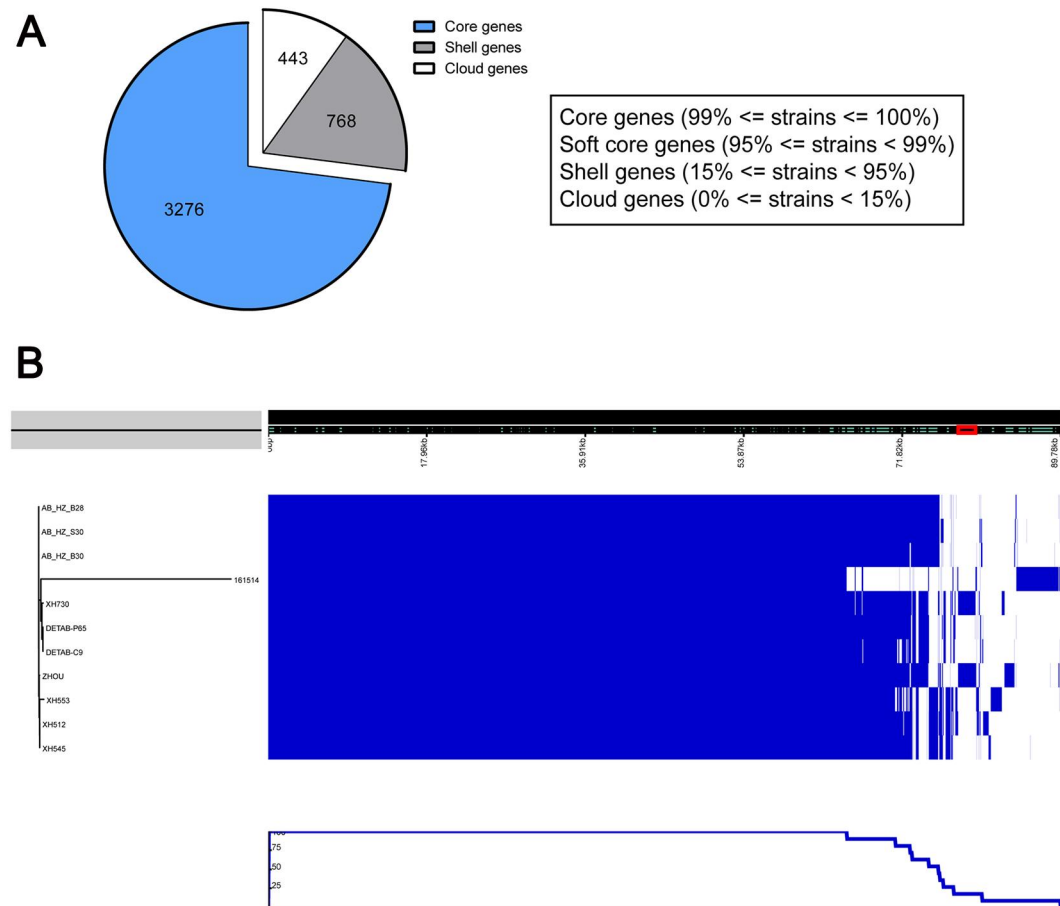


Table S1. Site-specific recombinases XerC/XerD (C/D) and XerD/XerC (D/C) in the chromosome of *A. baumannii* ZHOU isolate

Name	Start	End	Left arm	Center	Right arm	Site
<i>pdif</i> -1	89357	89384	ATTTCGCTAA	TCGGTT	TTATTTTATTG	C D
<i>pdif</i> -2	113932	113959	ATTTAAAATAA	AAATAC	TTATATTACTT	D C <sup>1</sup>
<i>pdif</i> -3	449000	449027	TTTTACATAA	TAAGTT	TTTGTAAATT	C D
<i>pdif</i> -4	645347	645374	ATATTTTATAA	TTTATT	GTATTTTAAAT	D C
<i>pdif</i> -5	1402913	1402940	TGTTTCGTATAA	TGTATA	TTATGTTAAAT	C D
<i>pdif</i> -6	1435523	1435550	ATTAAATATAA	GTTTAA	TTATGTAATAT	D C
<i>pdif</i> -7	1741796	1741823	AGTTAAAATA A	TATATA	TCATATTAAAA	C D
<i>pdif</i> -8	1909999	1910026	CTTTAAAATAA	GTATTA	TTATGAAGATT	D C
<i>pdif</i> -9	2821899	2821926	GTAAACCTAA	GAAACC	TTATTTTAAAT	C D
<i>pdif</i> -10	2838943	2838970	TCTCAACATAA	AAATAT	TGAAGTTAAAT	D C
<i>pdif</i> -11	2956941	2956968	AATAAACATA A	ACTGAG	ATATTTTAAAT	C D
<i>pdif</i> -12	3037792	3037819	ATTTATTATAA	ATATAA	TTATTTTATTC	D C

<i>pdif</i> -13	3902192	3902219	ATGTAAGGTA A	ACGGTC	TTCTTCGATAT	C D
<i>pdif</i> -14	3937447	3937474	AGATGGTATA A	ATACTC	TTAAGTTATAT	D C

---

<sup>1</sup>*pdif*-2 and *pdif*-3 sites with grey shading were located in each side of *bla*<sub>OXA-23</sub> segment, respectively.