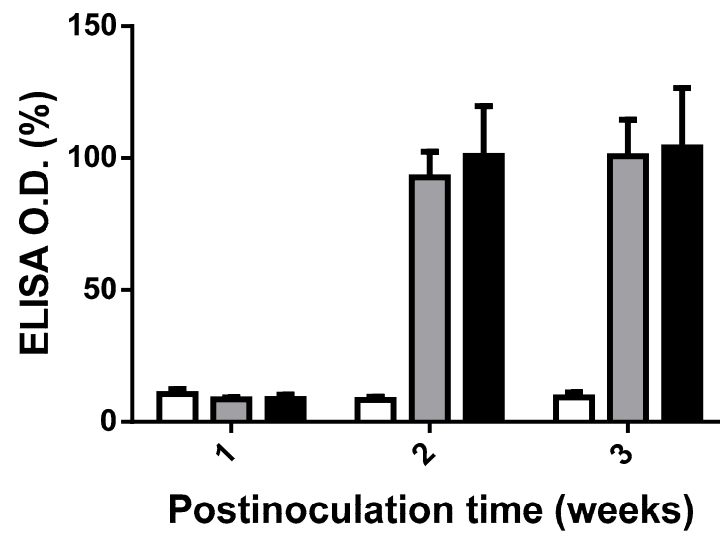


SUPPLEMENTARY MATERIAL 1 (Figure S1)



**Figure S1.** Serum-specific anti-*Leishmania infantum* IgG response of *L.infantum*-inoculated and control hamsters throughout the experiment determined by ELISA. Empty bars: Uninfected animals; Grey bars: infected and treated with miltefosine; Solid bars: infected and treated with miltefosine and clindamycin. ELISA values correspond to the % of positive control serum. Values are mean  $\pm$  standard deviation.