

Supplementary file

Table S1. Multi-drug resistant strains detected.

Site	Sampling source				
	Chicken	Cow	Human	Pig	Water
Ciudad del Niño	10	4	1	8	2
El Arado	8	3	0	7	5

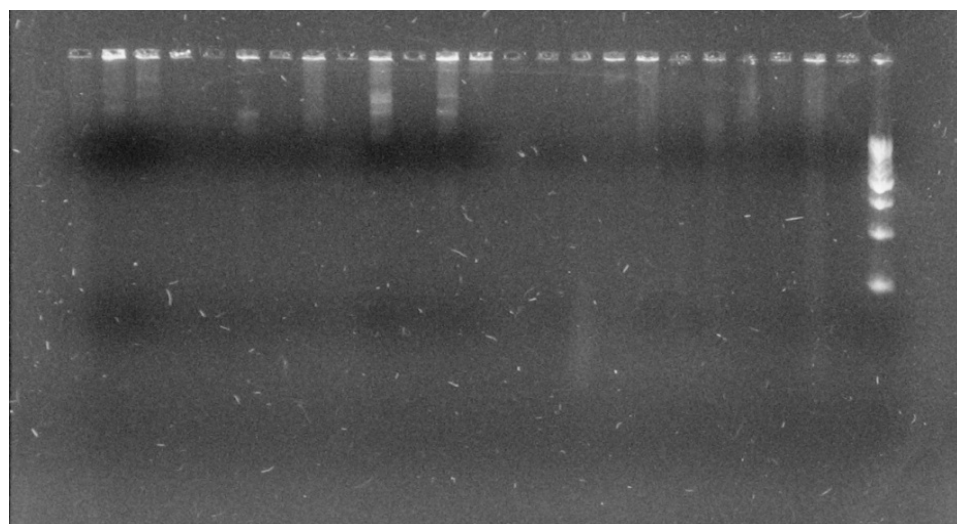


Figure S1. Detection of plasmid DNA by agarose gel electrophoresis. Chemical methods were used to extract and purify plasmid DNA from O/N cultures. Those samples presenting the characteristic bands of plasmid DNA were further analyzed.