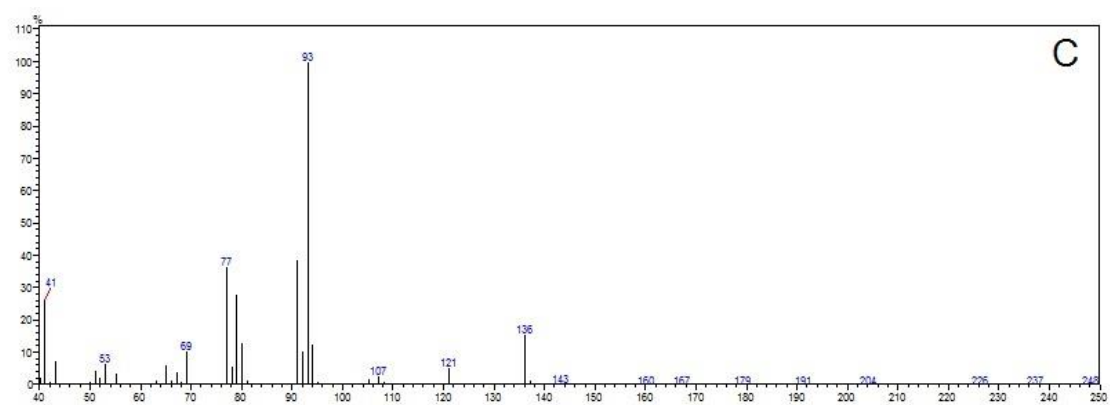
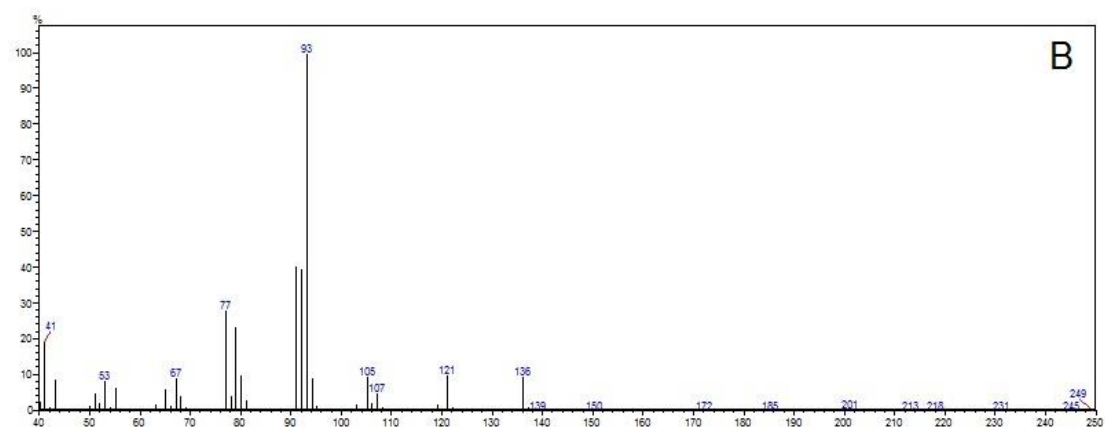
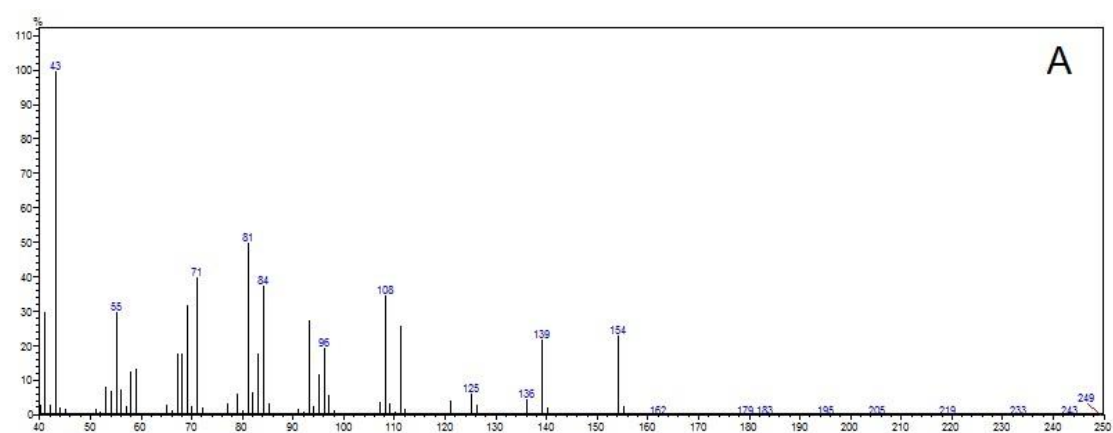
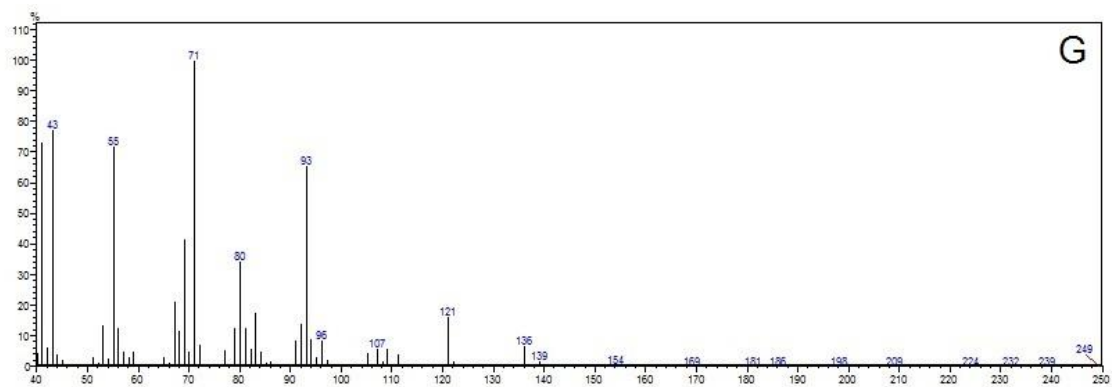
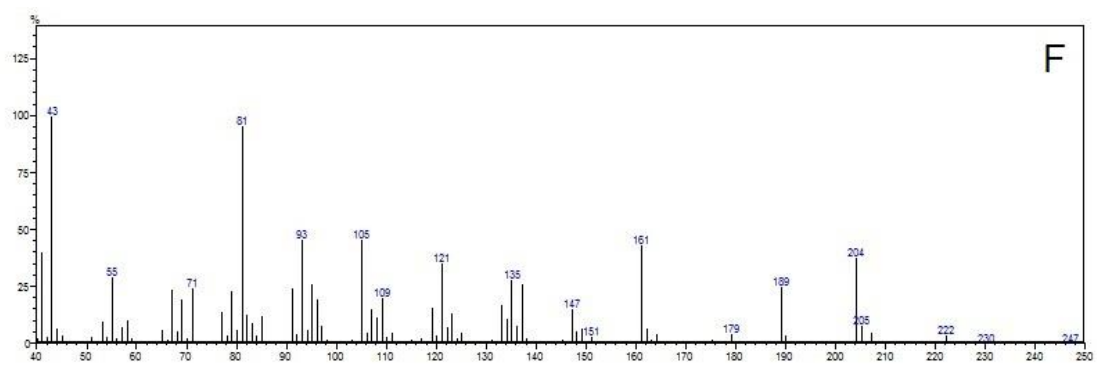
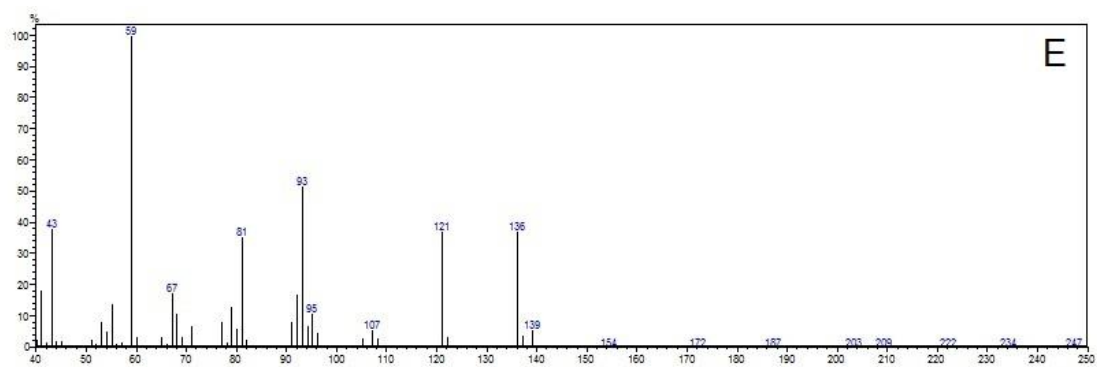
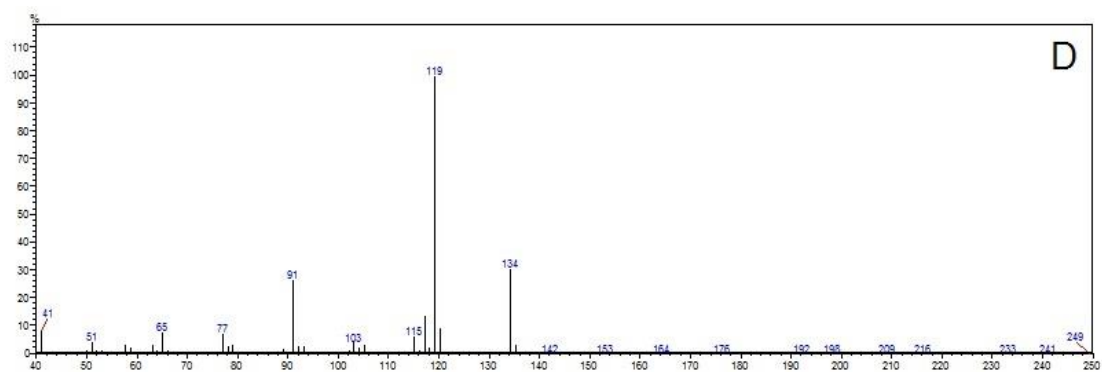
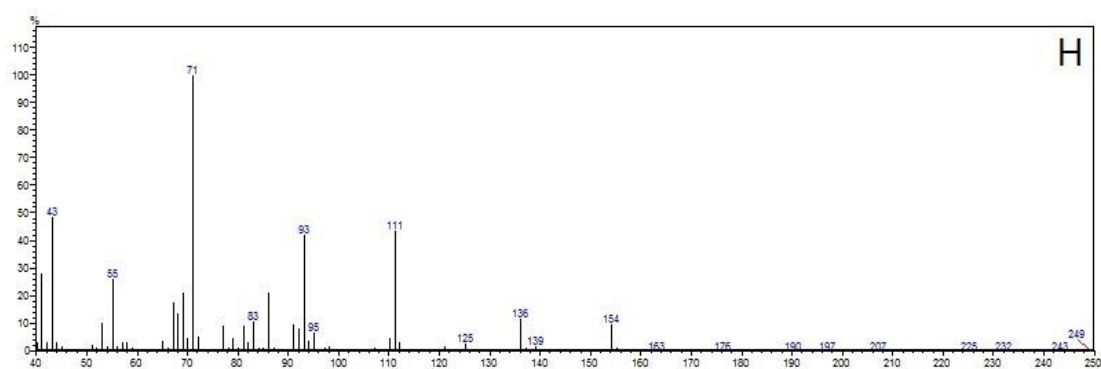


## Supplementary Material

Chemical composition, *in vitro* and *in silico* antileishmanial evaluation of the essential oil from *Croton linearis* Jacq. stems.







**Figure S1.** Mass spectra of main essential oil components from *Croton linearis* stems: **A**→ 1,8-cineole, **B**→  $\alpha$ -pinene, **C**→ *cis*-sabinene, **D**→ *p*-cymene, **E**→  $\alpha$ -terpineol, **F**→ *epi*- $\gamma$ -eudesmol, **G**→ linalool, **H**→ terpinen-4-ol.