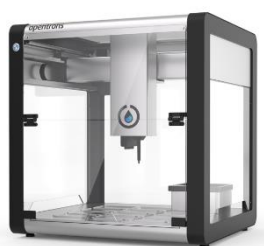
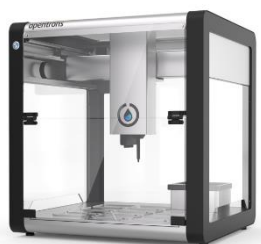


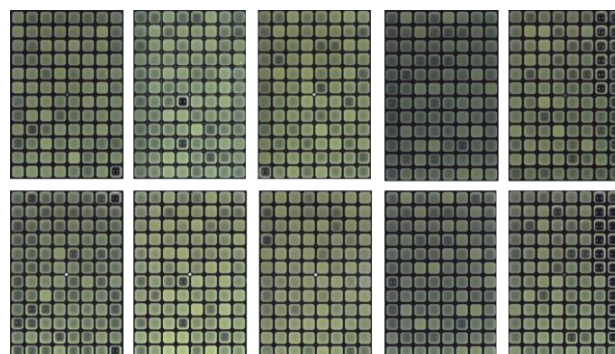
MIC determination



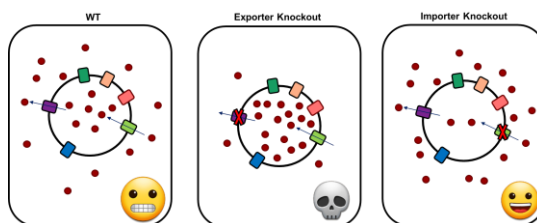
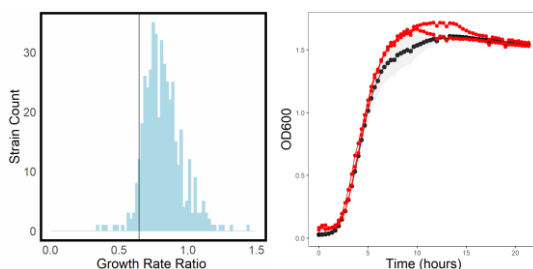
Batch preparation of plates loaded with glycerol droplets from transporter library



Loading of plates with sub-inhibitory concentration of antimicrobial

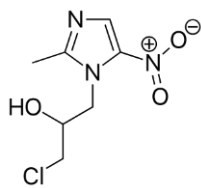


Growth determination of transporter KO library in duplicate using growth profiler.

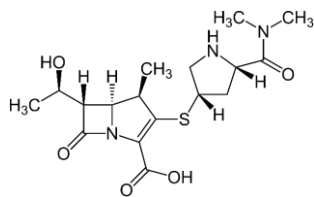


Analysis and data processing/extraction in R and inference about transport pathways.

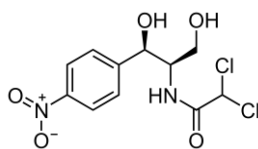
Supplementary Figure S1: Workflow for high throughput screening of transporter knockout library against antibiotics.



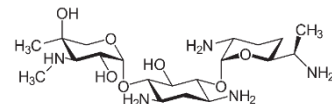
Ornidazole



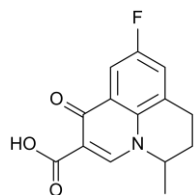
Meropenem



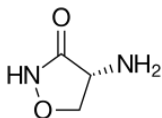
Chlroamphenicol



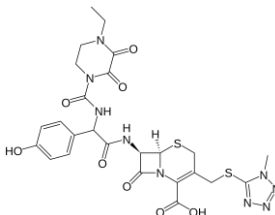
Gentamycin



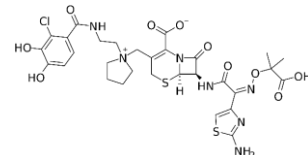
Flumequine



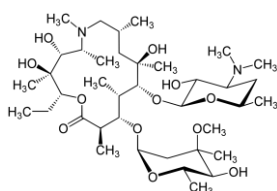
D-Cycloserine



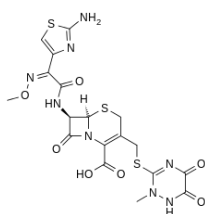
Cefoperazone



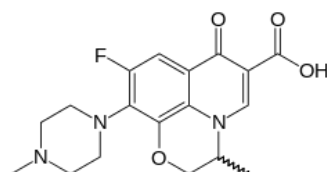
Cefiderocol



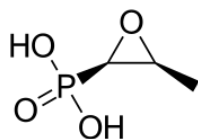
Azithromycin



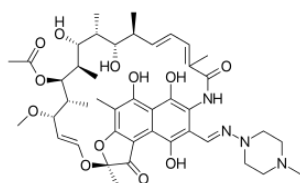
Ceftriaxone



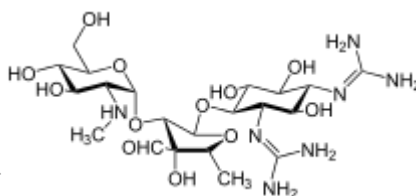
Ofloxacin



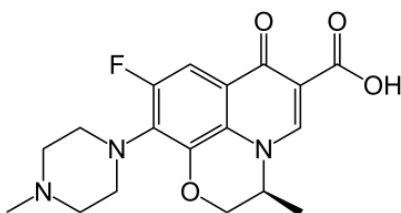
Fosfomicin



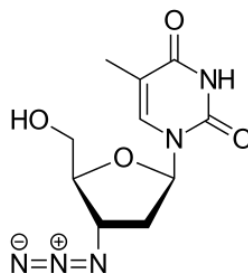
Rifampicin



Streptomycin



Levofloxacin



Zidovudine

Supplementary Figure S2: Structures of antibiotics used in this study.