

Figure S1. Growth of catalase and coagulase positive (*Staphylococcus aureus*) bacteria on blood agar plate.



Figure S2. Growth of gram-negative bacteria (Lactose fermenter) on blood and MacConkey agar plates after 18 hours of incubation period at 37°C.

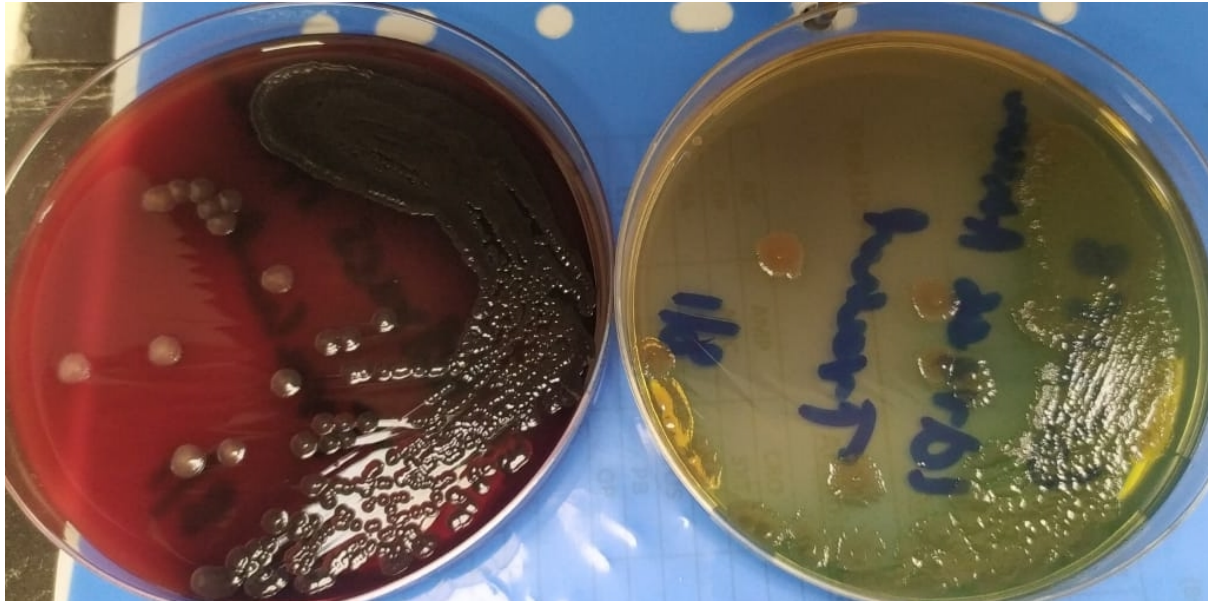


Figure S3. Growth of oxidase positive bacteria (probably *Pseudomonas aeruginosa*) on blood and CLED agar plates.



Figure S4. In given picture API 20E strip has been shown, on reading page all results of wells are given. On the bases of results, a unique number was produced which was matched with data bank available on BIOMEUREX website. We had used different types of APIs for different organisms, like API NE for non-Enterobacteriaceae and many more.

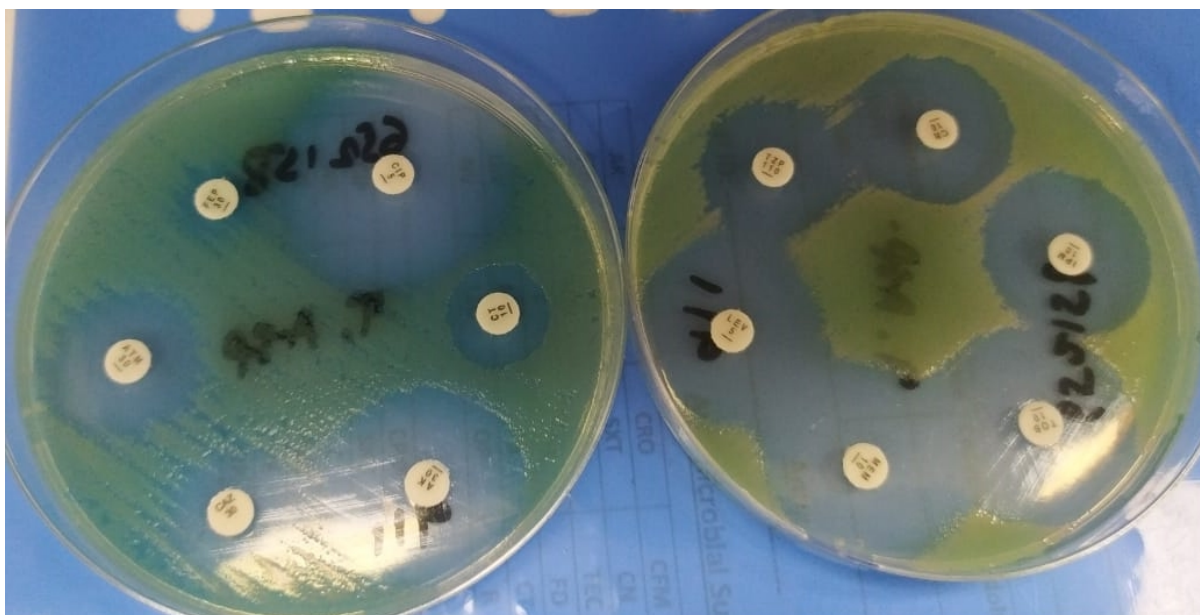


Figure S5. Sensitivity pattern of *Pseudomonas aeruginosa* on MH agar plates.

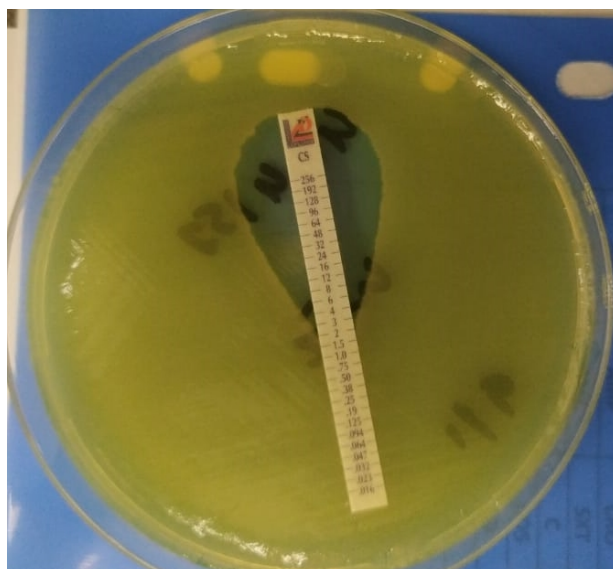


Figure S6. MIC of Colistin on MH agar plate.

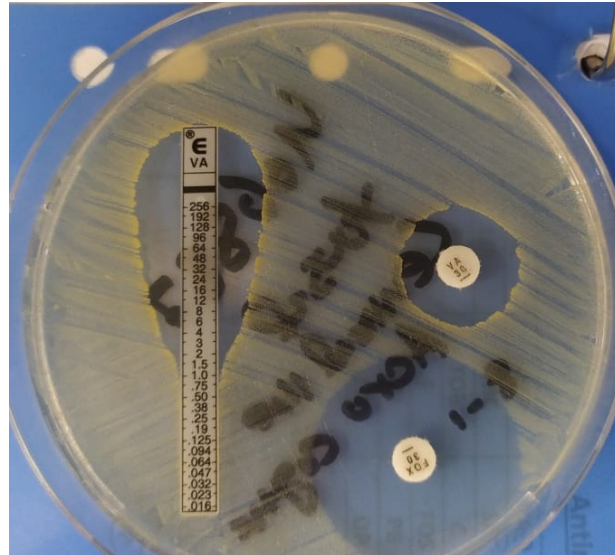


Figure S7. MIC of Vancomycin on MH agar plate with Sensitivity pattern of Vancomycin (Sensitive) and Cefoxitin (Sensitive) discs.



Figure S8. MIC of Vancomycin on MH agar plate with Sensitivity pattern of Vancomycin (Sensitive) and Cefoxitin (Resistant), Oxacillin (Resistant), and Tetracycline (Sensitive) discs.