

Supplementary Materials

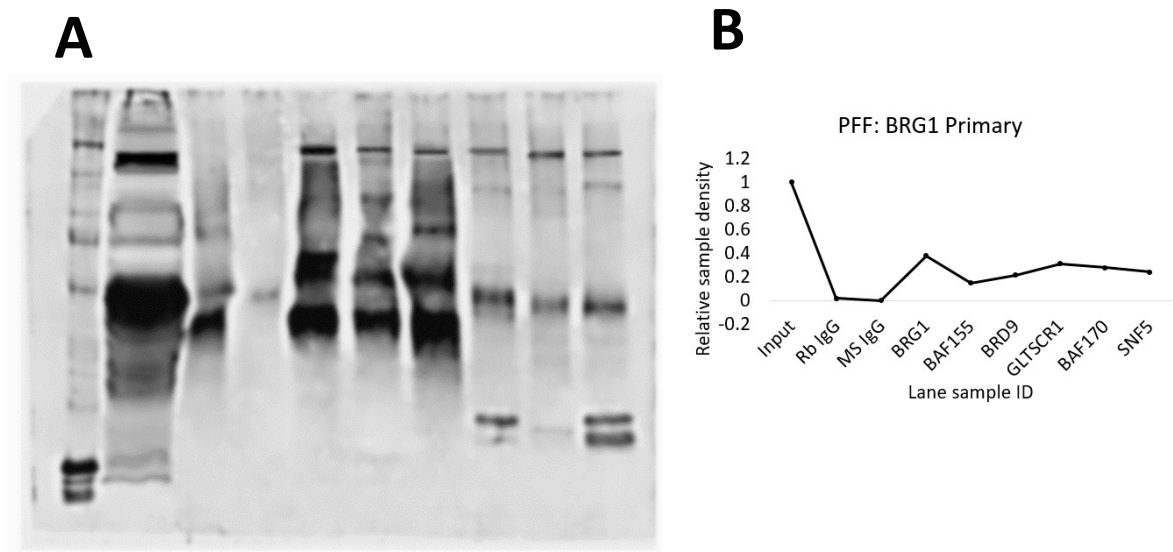


Figure S1. GBAF subunit signal is co-enriched with BRG1 in PFF cells. (A) Co-IP of (starting in lane 5) BRG1, BAF155, BRD9, GLTSCR1, BAF170, and SNF5 with BRG1 primary antibody. (B) Accompanying relative signal density plot for BRG1 primary blot.

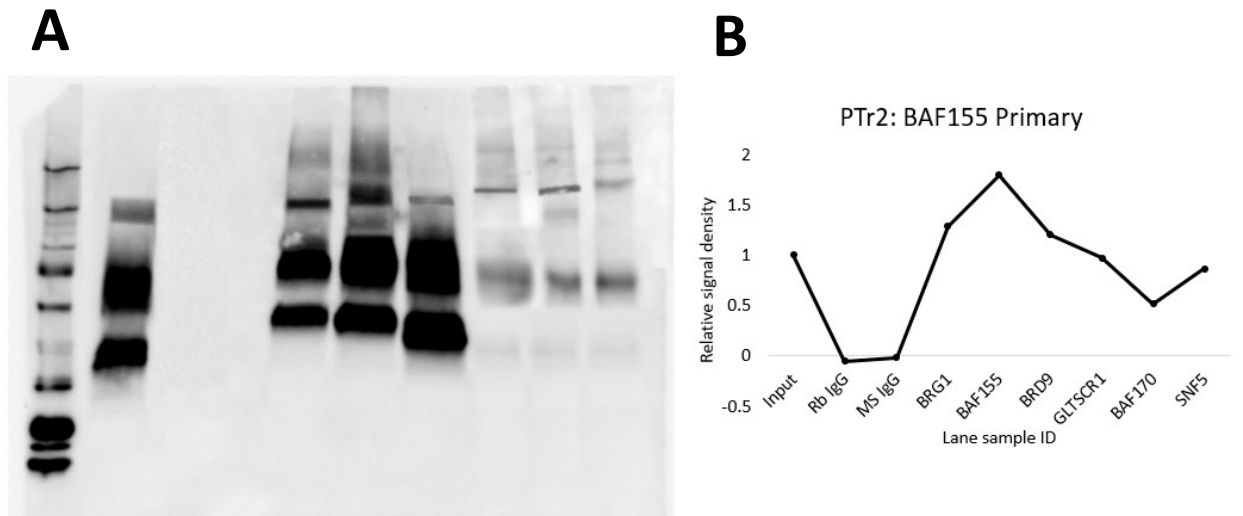


Figure S2. GBAF subunit signal is co-enriched with BAF155 in PFF cells. (A) Co-IP of (starting in lane 5) BRG1, BAF155, BRD9, GLTSCR1, BAF170, and SNF5 with BRG1 primary antibody. (B) Accompanying relative signal density plot for BAF155 primary blot.

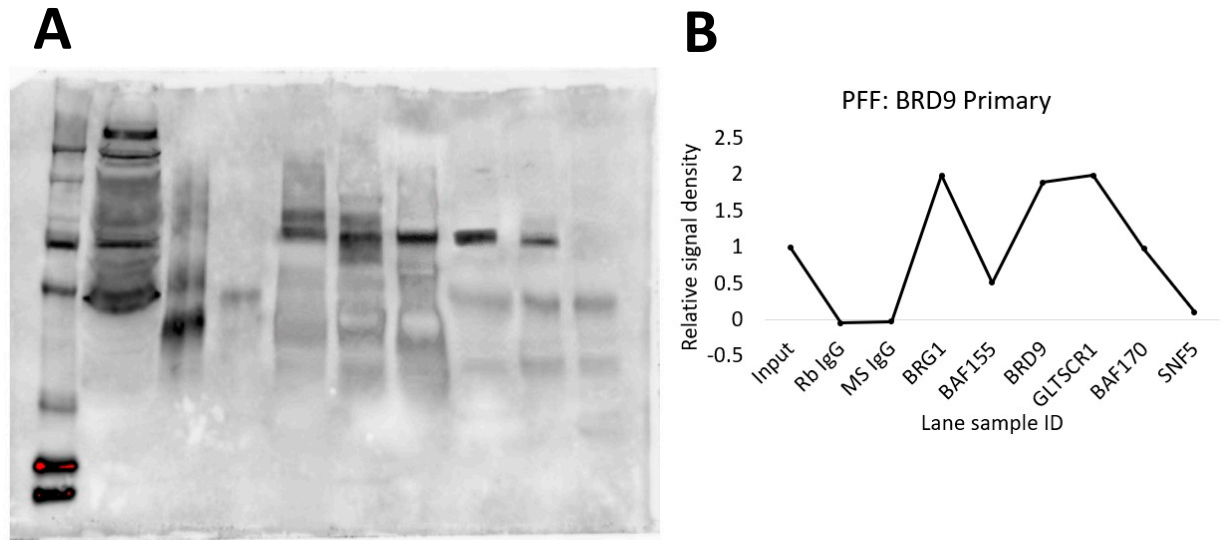


Figure S3. GBAF subunit BRD9 is detectable in PFF cells. **(A)** Co-IP of (starting in lane 5) BRG1, BAF155, BRD9, GLTSCR1, BAF170, and SNF5 with BRG1 primary antibody. **(B)** Accompanying relative signal density plot for BRD9 primary blot.

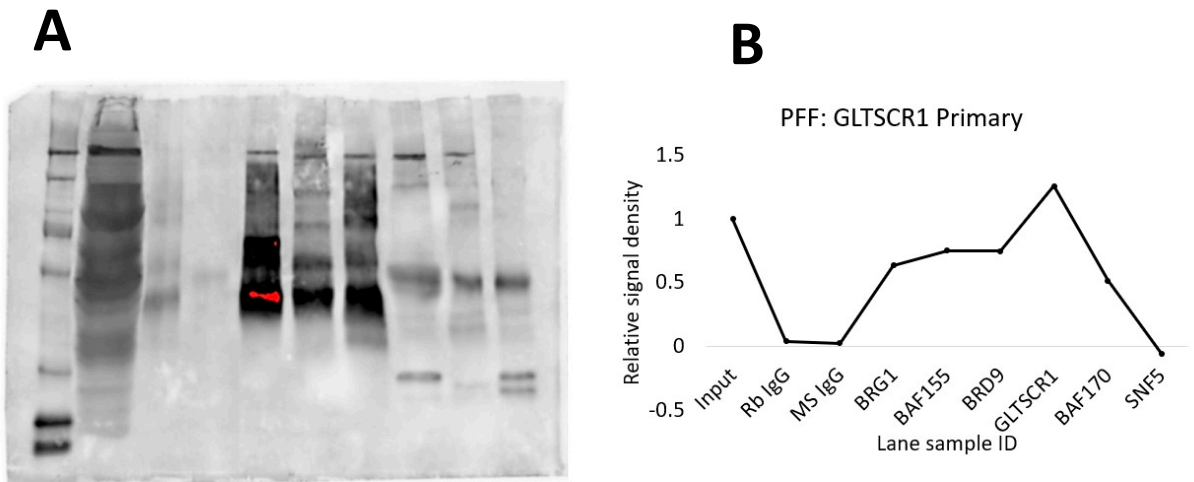


Figure S4. GBAF subunit GLTSCR1 is detectable in PFF cells. **(A)** Co-IP of (starting in lane 5) BRG1, BAF155, BRD9, GLTSCR1, BAF170, and SNF5 with BRG1 primary antibody. **(B)** Accompanying relative signal density plot for GLTSCR1 primary blot.

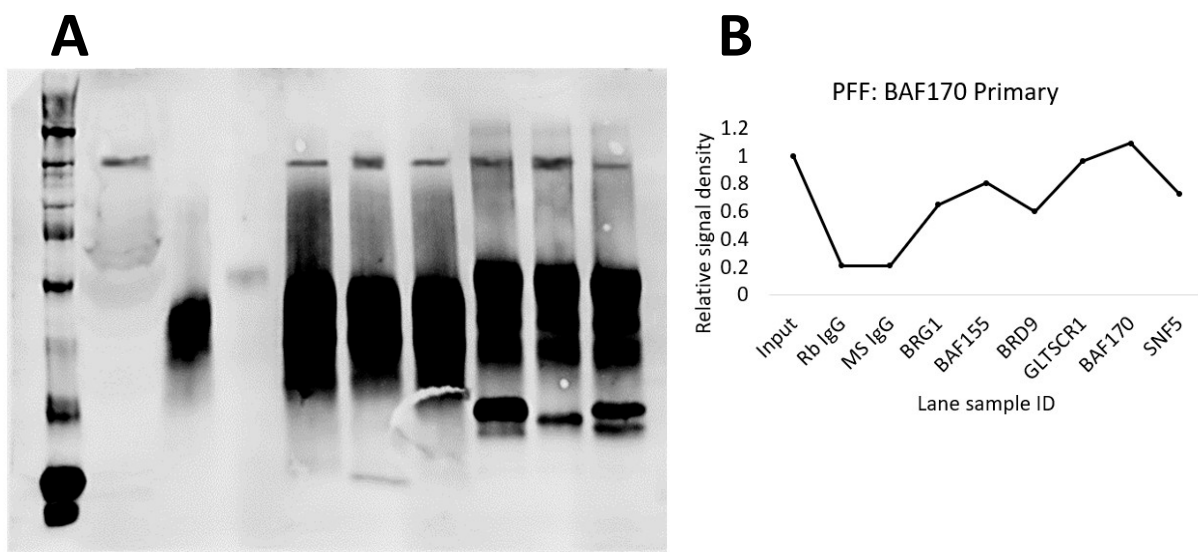


Figure S5. GBAF subunits BRD9 and GLTSCR1 are co-enriched with BAF170 in PFF cells. **(A)** Co-IP of (starting in lane 5) BRG1, BAF155, BRD9, GLTSCR1, BAF170, and SNF5 with BRG1 primary antibody. **(B)** Accompanying relative signal density plot for BAF170 primary blot.

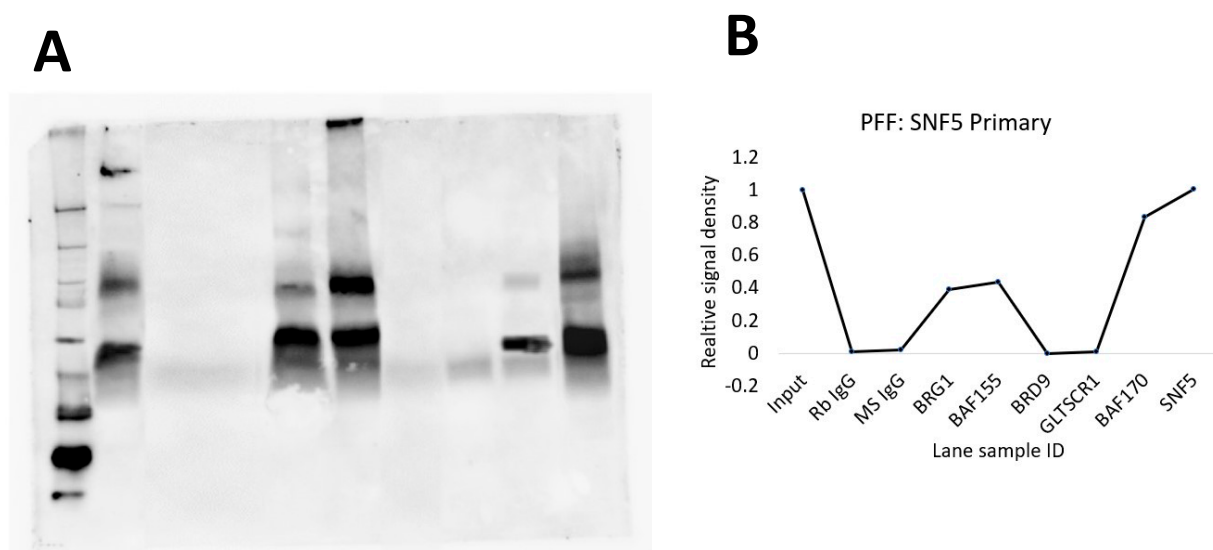


Figure S6. GBAF subunits BRD9 and GLTSCR1 are not co-enriched with SNF5 in PFF cells. **(A)** Co-IP of (starting in lane 5) BRG1, BAF155, BRD9, GLTSCR1, BAF170, and SNF5 with BRG1 primary antibody. **(B)** Accompanying relative signal density plot for SNF5 primary blot.

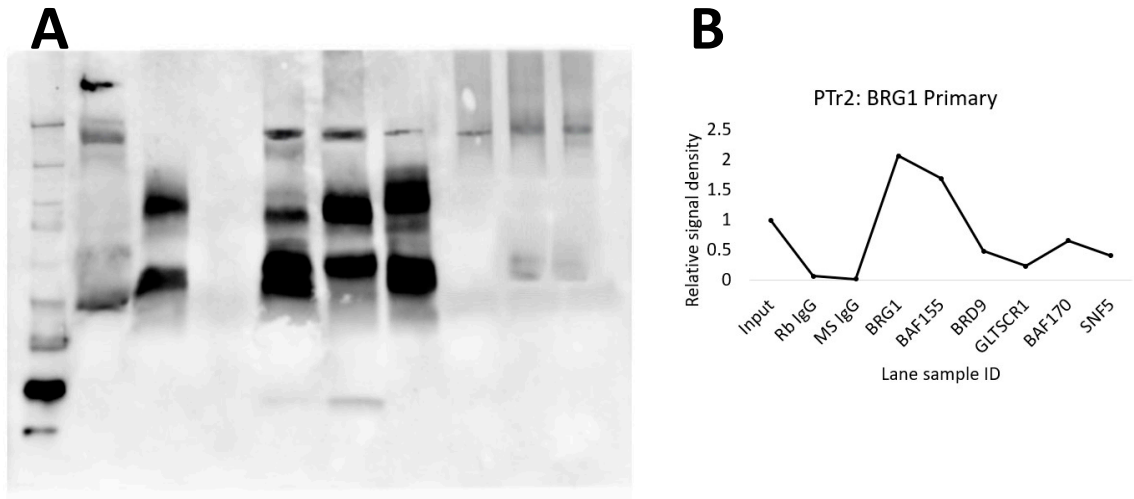


Figure S7. GBAF subunit signal is co-enriched with BRG1 in PTr2 cells. (A) Co-IP of (starting in lane 5) BRG1, BAF155, BRD9, GLTSCR1, BAF170, and SNF5 with BRG1 primary antibody. (B) Accompanying relative signal density plot for BRG1 primary blot.

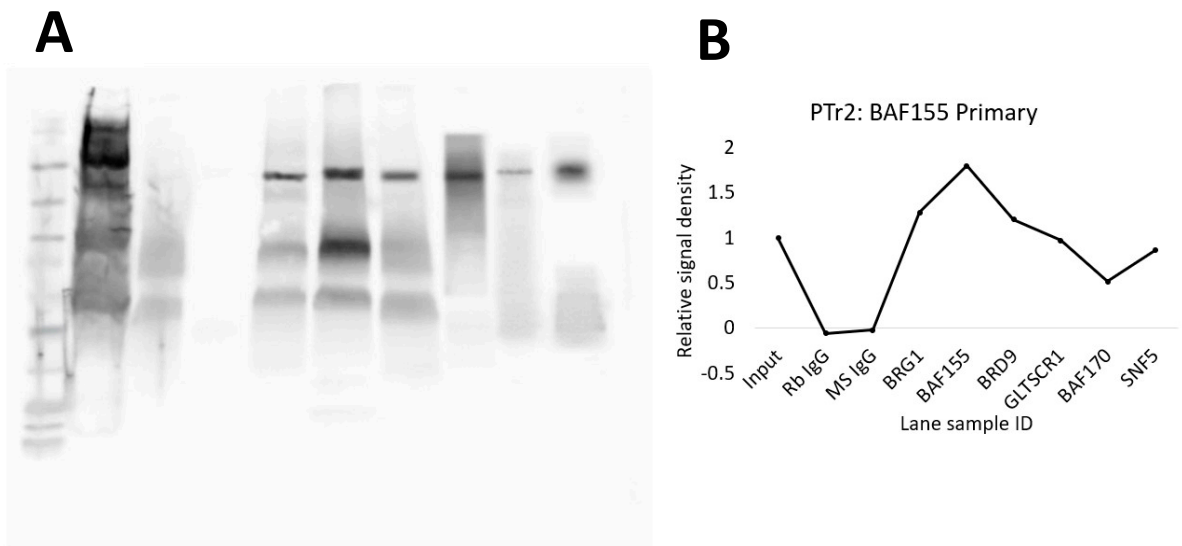


Figure S8. GBAF subunit signal is co-enriched with BAF155 in PTr2 cells. (A) Co-IP of (starting in lane 5) BRG1, BAF155, BRD9, GLTSCR1, BAF170, and SNF5 with BRG1 primary antibody. (B) Accompanying relative signal density plot for BAF155 primary blot.

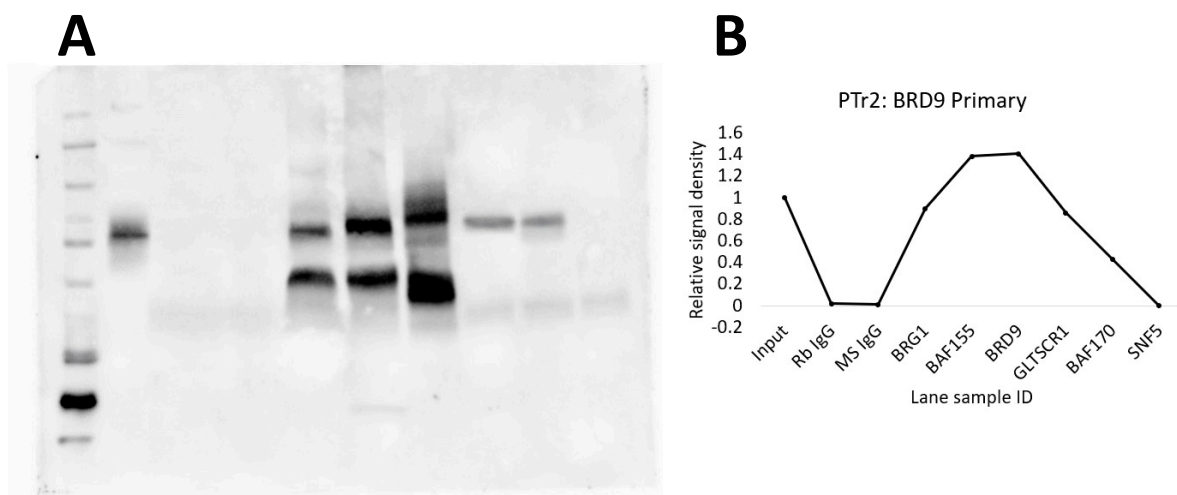


Figure S9. GBAF subunit BRD9 is detectable in PTTr2 cells. **(A)** Co-IP of (starting in lane 5) BRG1, BAF155, BRD9, GLTSCR1, BAF170, and SNF5 with BRG1 primary antibody. **(B)** Accompanying relative signal density plot for BRD9 primary blot.

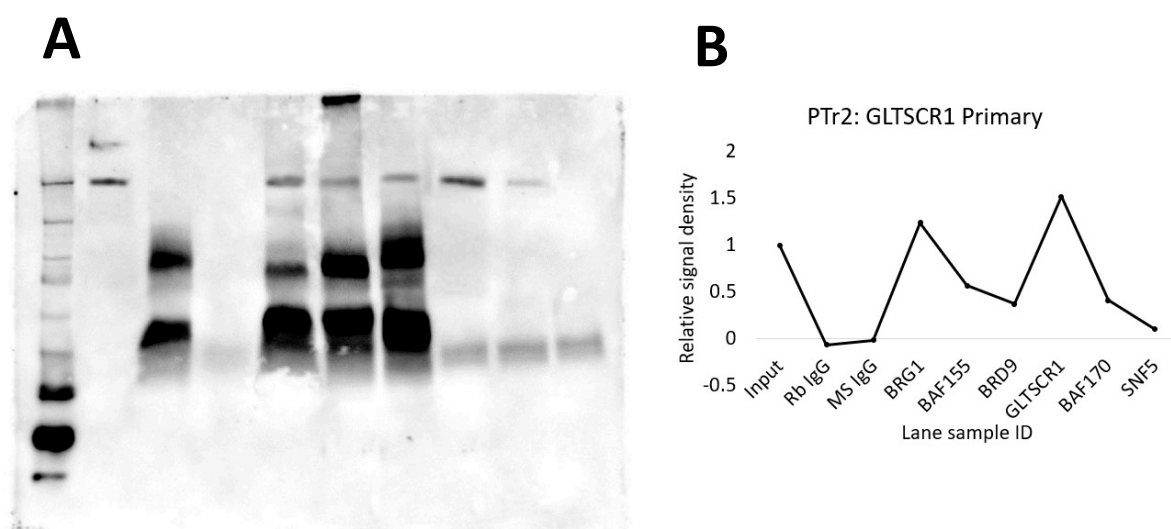


Figure S10. GBAF subunit GLTSCR1 is detectable in PTTr2 cells. **(A)** Co-IP of (starting in lane 5) BRG1, BAF155, BRD9, GLTSCR1, BAF170, and SNF5 with BRG1 primary antibody. **(B)** Accompanying relative signal density plot for GLTSCR1 primary blot.

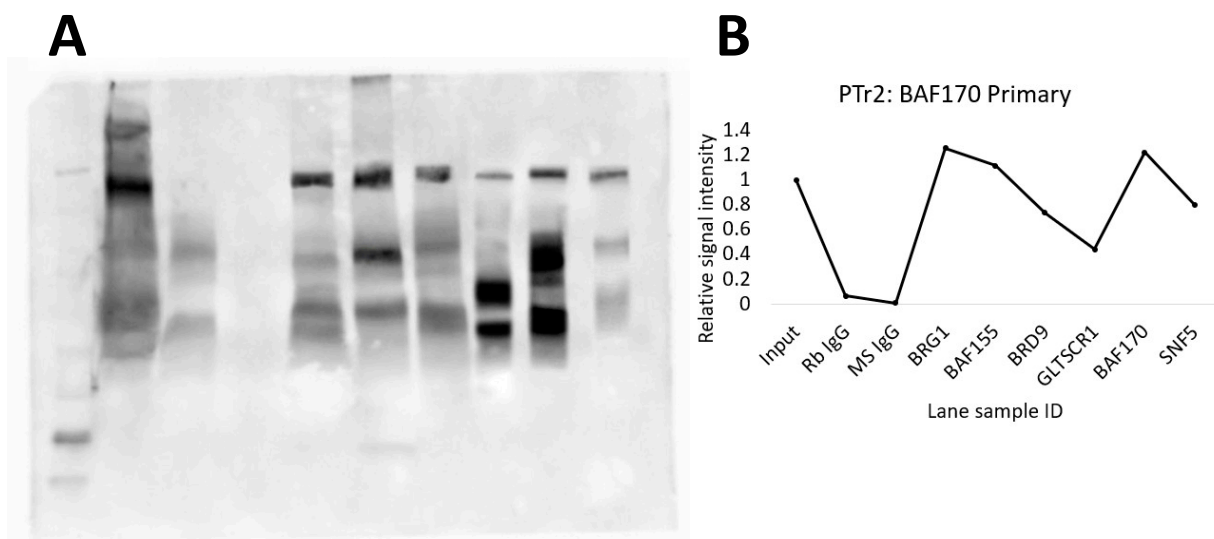


Figure S11. GBAF subunits BRD9 and GLTSCR1 are co-enriched with BAF170 in PTr2 cells. **(A)** Co-IP of (starting in lane 5) BRG1, BAF155, BRD9, GLTSCR1, BAF170, and SNF5 with BRG1 primary antibody. **(B)** Accompanying relative signal density plot for BAF170 primary blot.

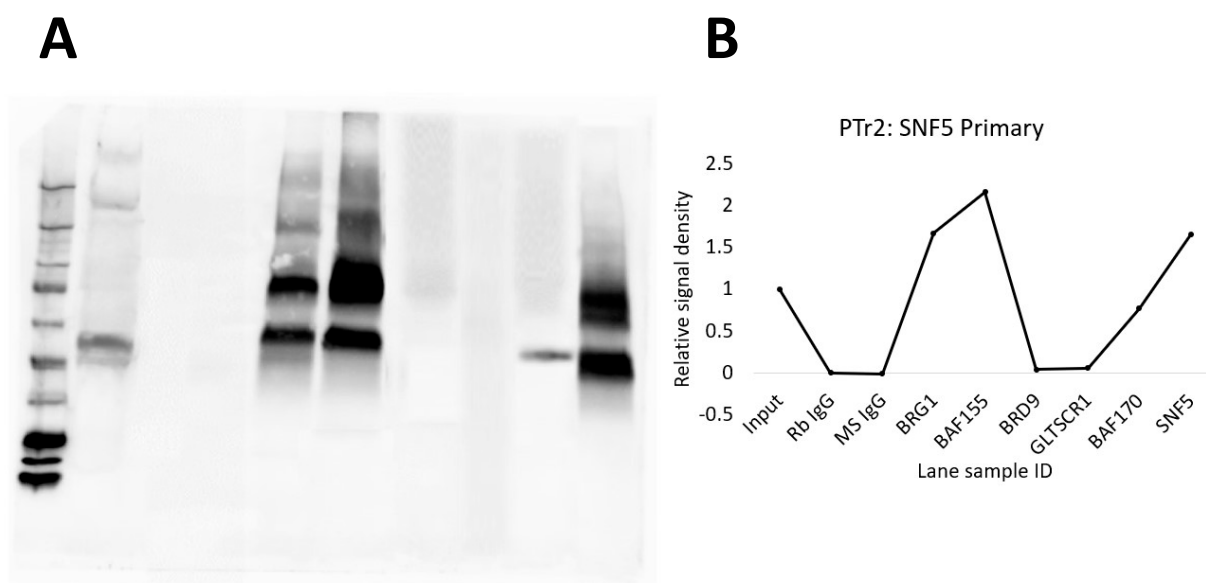


Figure S12. GBAF subunits BRD9 and GLTSCR1 are not co-enriched with SNF5 in PTr2 cells. **(A)** Co-IP of (starting in lane 5) BRG1, BAF155, BRD9, GLTSCR1, BAF170, and SNF5 with BRG1 primary antibody. **(B)** Accompanying relative signal density plot for SNF5 primary blot.