

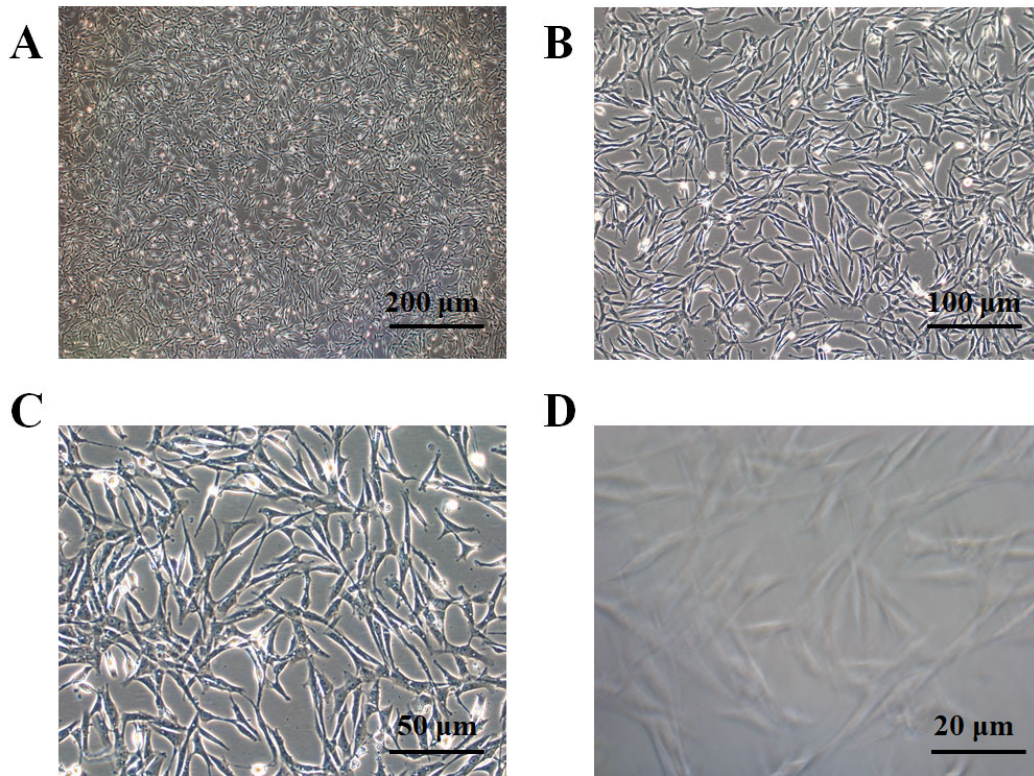
*Supplementary Material*

**NOTCH1 as a negative regulator of avian adipocyte differentiation: implications  
for fat disposition**

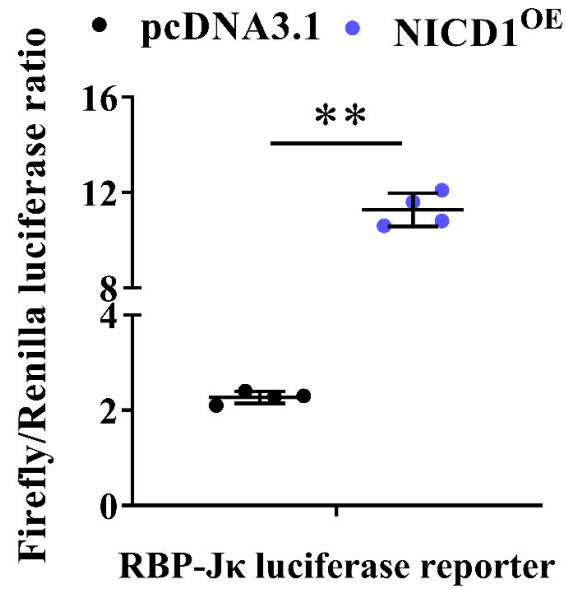
**Zheng Wang<sup>1†</sup>, Yue Su<sup>1†</sup>, Mingyu Zhao<sup>1</sup>, Zhenhua Ma<sup>1</sup>, Jianhui Li<sup>2</sup>, Zhuocheng  
Hou<sup>3</sup>, Huifeng Li<sup>1\*</sup>**

**\* Correspondence:** Huifeng Li, lhftom@sxau.edu.cn

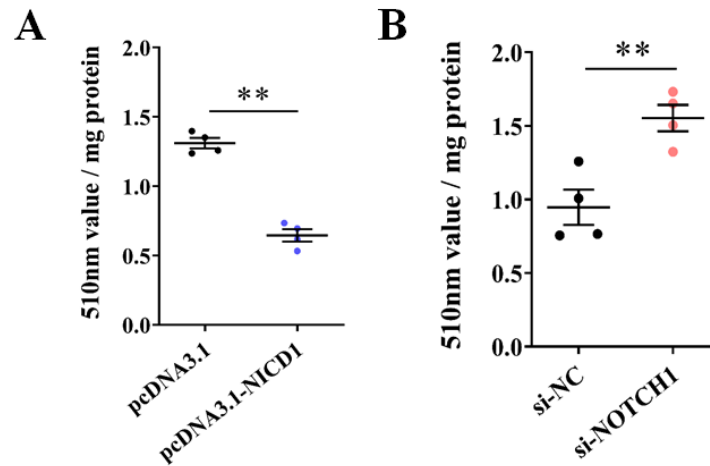
**1 Supplementary Figures**



**Figure S1.** Representative phase contrast image of ICP1 cells approximately 24 h after seeding. (A) at 4× magnification objective. (B) at 10× magnification objective. (A) at 20× magnification objective. (B) at 40× magnification objective.

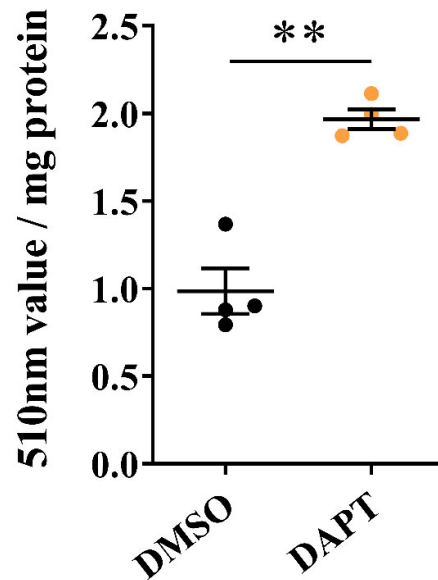


**Figure S2.** NICD1 promoted the relative luciferase activity dependent on RBP-J $\kappa$  site (n=4). Data are shown as mean  $\pm$  SD and significance was determined using Student's *t*-tests. \*\* $P < 0.01$ .

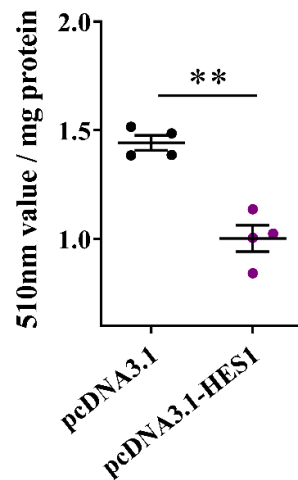


**Figure S3.** Quantification of Oil-Red-O staining after *NOTCH1* overexpression or knockdown or control. (A) Comparison of the lipid droplet content in NICD1 overexpression ICP1 cells and control cells obtained by oil red O staining and

extraction methods (n=4). (B) Comparison of the lipid droplet content in *NOTCH1* knockdown ICP1 cells and control cells (n=4). Data are shown as mean  $\pm$  SD and significance was determined using Student's *t*-tests.  $**P < 0.01$ .



**Figure S4.** Quantification of Oil-Red-O staining after DAPT or DMSO treatment (n=4). Data are shown as mean  $\pm$  SD and significance was determined using Student's *t*-tests.  $**P < 0.01$ .



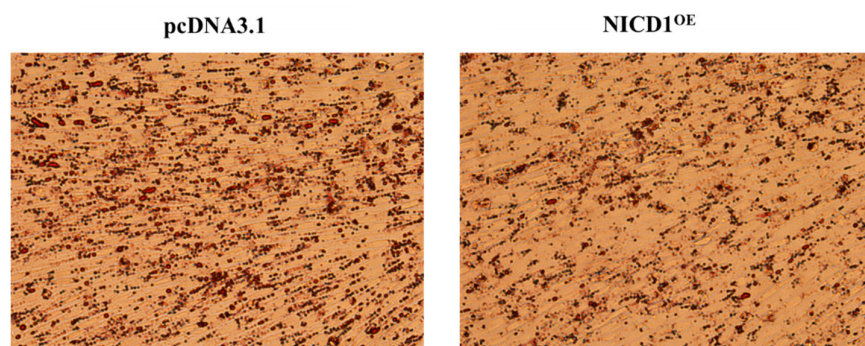
**Figure S5.** Quantification of Oil-Red-O staining after *HES1* overexpression or control. (n=4). Data are shown as mean  $\pm$  SD and significance was determined using Student's *t*-tests. \*\* $P < 0.01$ .

**Table S1.** The putative binding sites of transcription factor *HES1* within 2000 bp upstream region of *cPPAR $\gamma$ 2* transcript (Chr12: 5018144- 5020143).

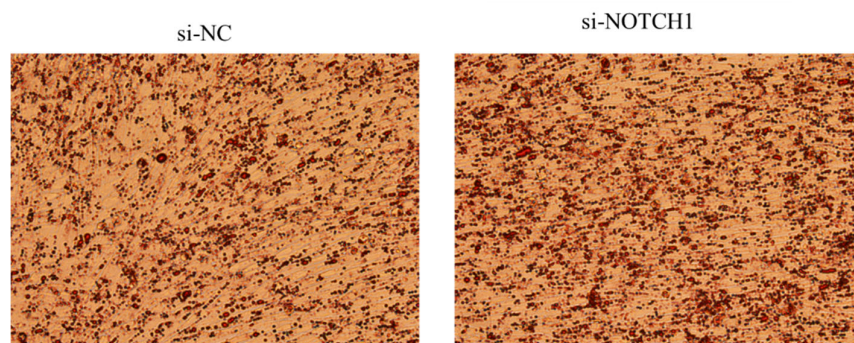
Putative binding sites	Start	End	Strand	Score
GGCGCGTG	5020107	5020114	+	12.92
GGCGCGTGAA	5020107	5020116	+	9.77
GGCGTGTG	5019635	5019642	+	8.44
CGCGCGCG	5019168	5019175	+	8.35
CGCGCGCG	5019168	5019175	-	8.35
TTCACGCGCC	5020107	5020116	-	8.92
GGCGTGTGGG	5019635	5019644	+	8.87
CGCGCGCGGG	5019166	5019175	-	8.77
TTCACGCG	5020109	5020116	-	7.47
GGCGCGAGCC	5019385	5019394	+	8.37

## 2 The original images of staining cells:

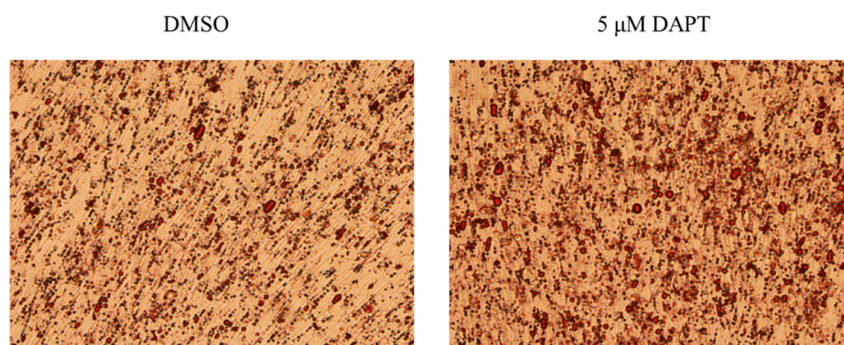
**Figure 3A**



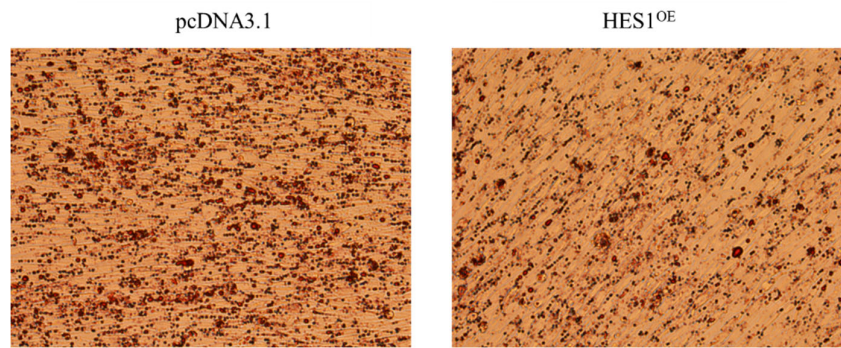
**Figure 3C**



**Figure 4E**



**Figure 5A**



### 3 The original Western blot figures:

Figure 1B

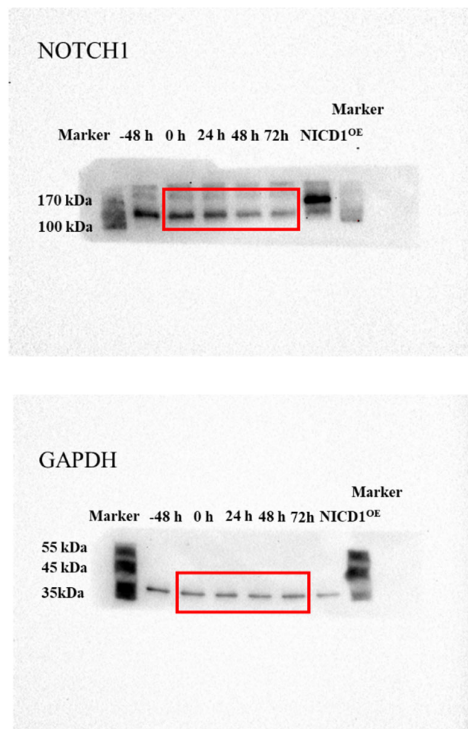
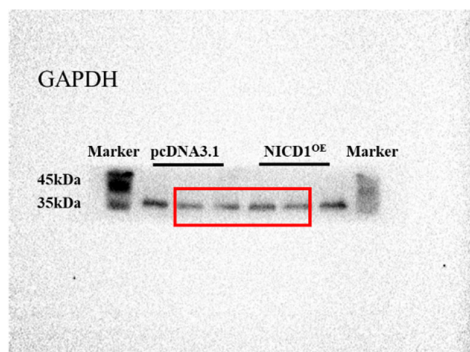
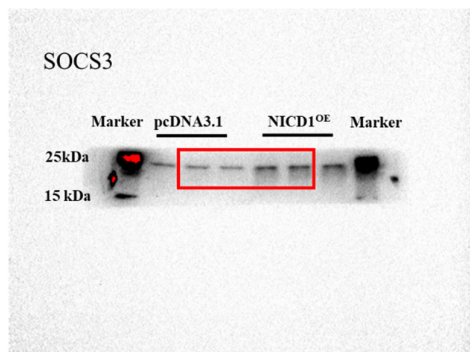
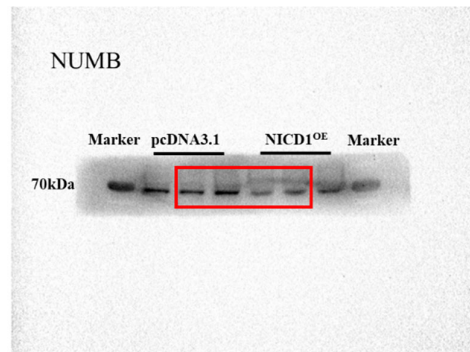
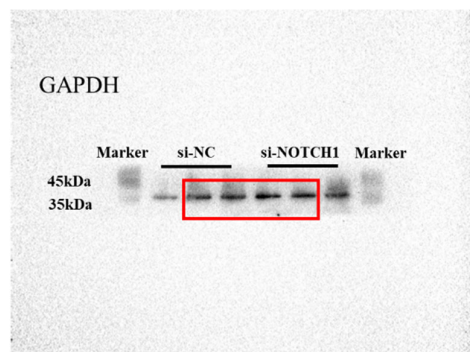
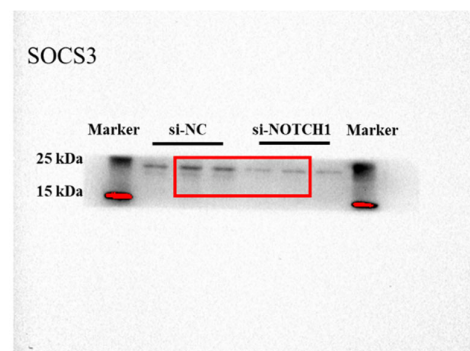
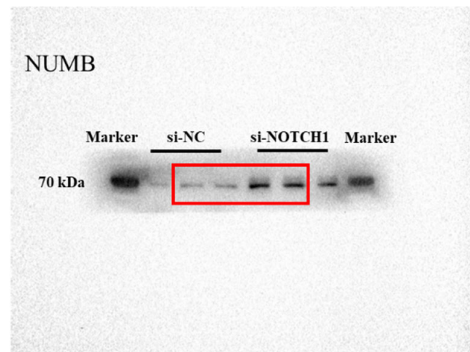
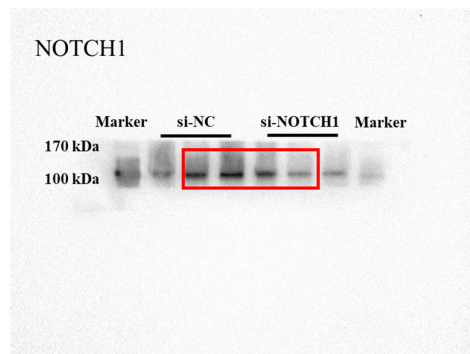


Figure 2A



**Figure 2C**



**Figure 4A**

