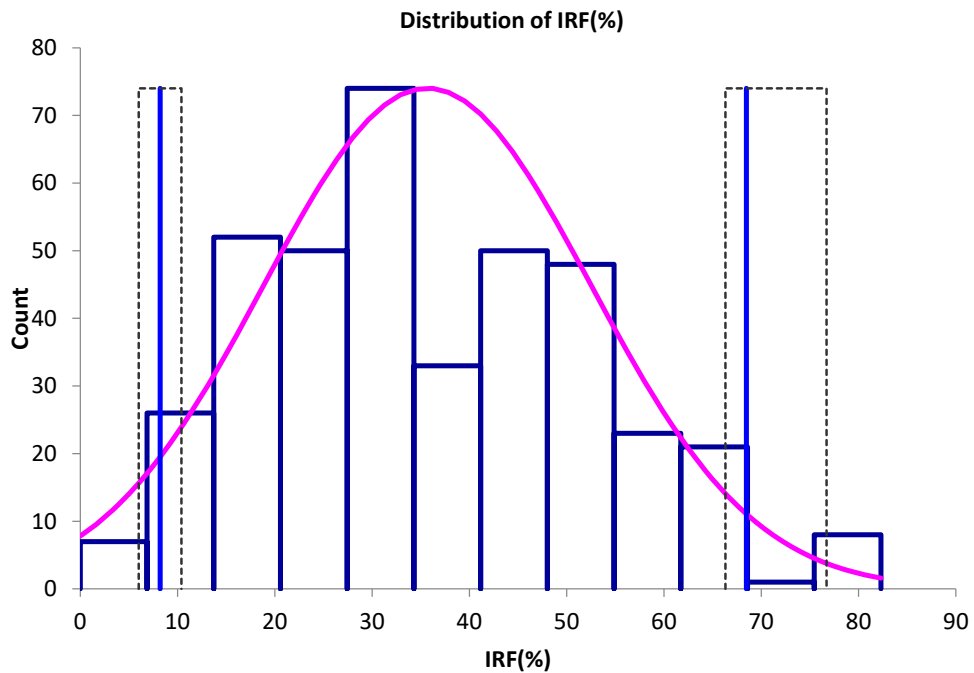


Supplementary Figure S1. Frequency distributions and reference intervals for IRF in healthy dogs. The observed distribution is represented by the vertical black columns, while the red curve is the fitted distribution. Reference limits are drawn as vertical blue lines. Dotted bar surrounding those limits are the 90% confidence intervals.



Supplementary Figure S2. Frequency distributions and reference intervals for IRF in healthy cats. The observed distribution is represented by the vertical black columns, while the red curve is the fitted distribution. Reference limits are drawn as vertical blue lines. Dotted bar surrounding those limits are the 90% confidence intervals.