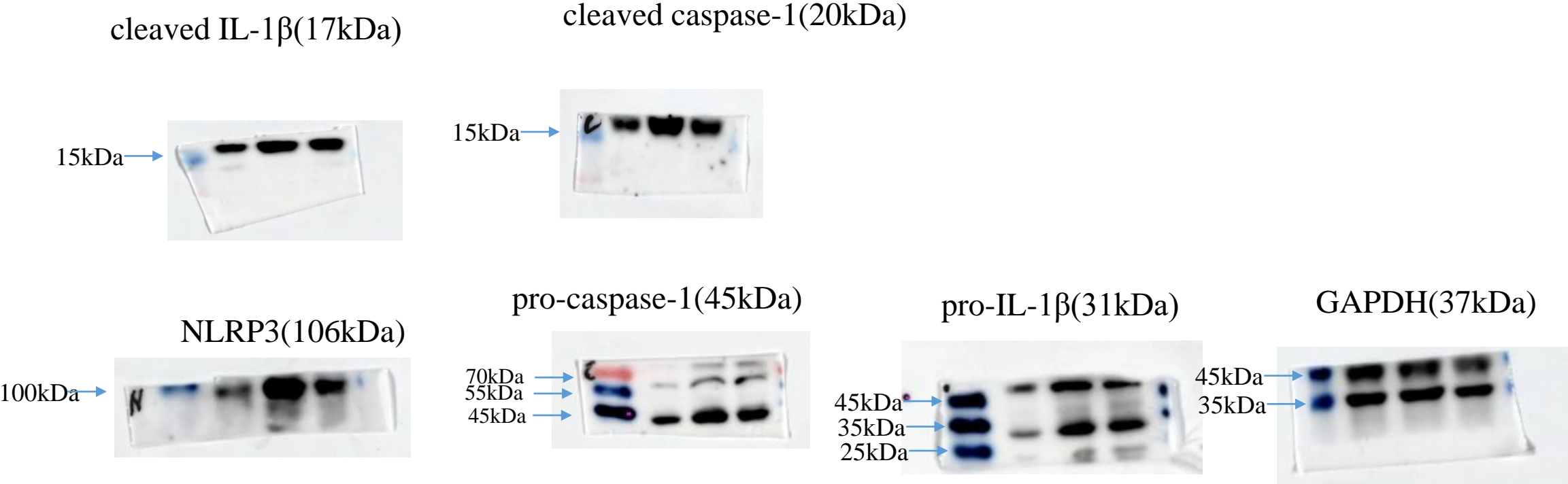


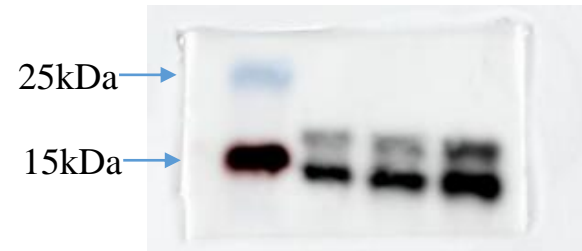
**Supplementary Figure S1.** Western blots raw data showing all bands with molecular weight markers for corresponding figures.

**Figure 2 Melatonin suppresses the NLRP3 inflammasome activation in LPS-stimulated BEND cells**



**Figure 3 melatonin promoting autophagy in LPS-induced BEND cells**

LC3 I (16kDa)  
LC3 II (14kDa)



Beclin1(43kDa)



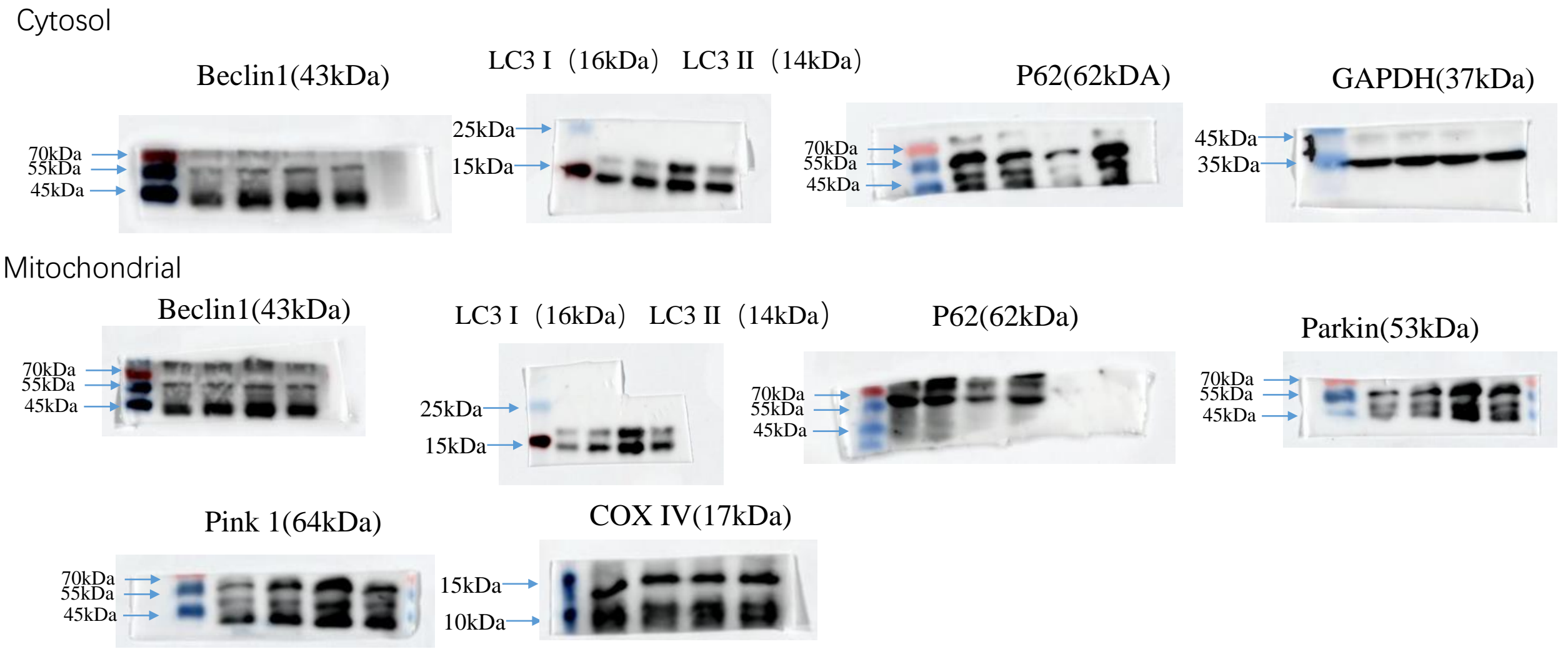
P62(62kDa)



GAPDH(37kDa)

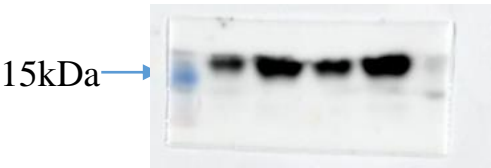


**Figure 4 Melatonin promotes mitophagy and alleviates mitochondrial dysfunction in LPS-induced BEND cells**



**Figure 5 3-MA reverses the inhibitory effect of melatonin on inflammation and mitochondrial dysfunction in LPS-induced BEND cells**

cleaved IL-1 $\beta$ (17kDa)



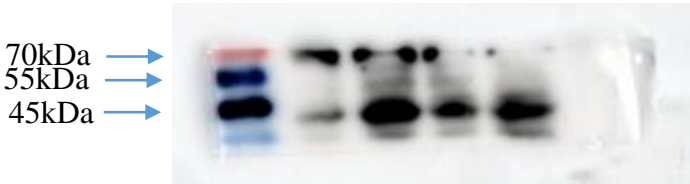
cleaved caspase-1(20kDa)



NLRP3(106kDa)



pro-caspase-1(45kDa)



pro-IL-1 $\beta$ (31kDa)



GAPDH(37kDa)

