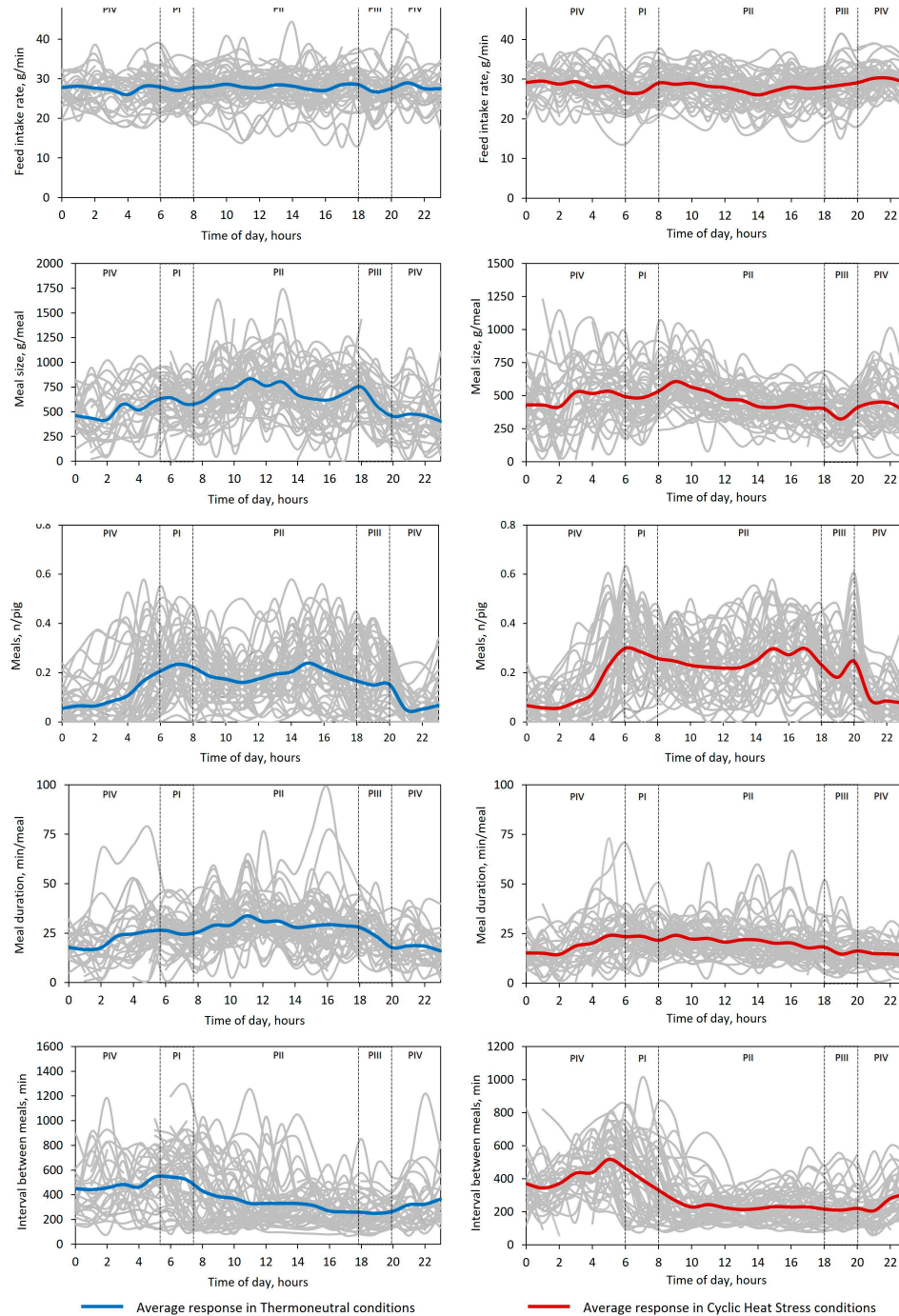


# Feeding Behavior of Finishing Pigs under Diurnal Cyclic Heat Stress

Marllon José Karpeggiane de Oliveira <sup>1</sup>, Marcio Valk <sup>2</sup>, Antônio Diego Brandão Melo <sup>1</sup>, Danilo Alves Marçal <sup>1</sup>, Cleslei Alisson Silva <sup>1</sup>, Graziela Alves da Cunha Valini <sup>1</sup>, Pedro Righetti Arnaut <sup>1</sup>, Joseane Penteado Rosa Gonçalves <sup>1</sup>, Ines Andretta <sup>3</sup> and Luciano Hauschild <sup>1,\*</sup>



**Supplementary Figure S1.** Individual pig behavior profiles of pigs during the experimental period throughout 24 h-day according to ambient temperature (Thermoneutral vs. Cyclic heat stress) and periods of the day: PI (06-08 h); PII (08-18 h); PIII (18-20 h); PIV (20-06 h). The thermoneutrality condition was 24 h at 22°C, while the cyclic heat stress condition was 12 h at 22 °C, 2000-0800 h, and 12 h at 35 °C, 0800-2000 h.