

Table S1. Polymerase chain reaction primers used to verify the 18S and *cox1* genes of *Neofoleyellides* sp.

Gene	Primer	5'-3'
18S	18SF	5'-GAC GGG CAG CTT CCG GAA ACG-3
	18SR	5-CCG CTT TTC TCG AAA CGG CTCA-3'
COXI	COI-intF	5'-TGA TTG GTG GTT TTG GTA A-3'
	COI-intR	5'-ATA AGT ACG AGT ATC AAT ATC-3'

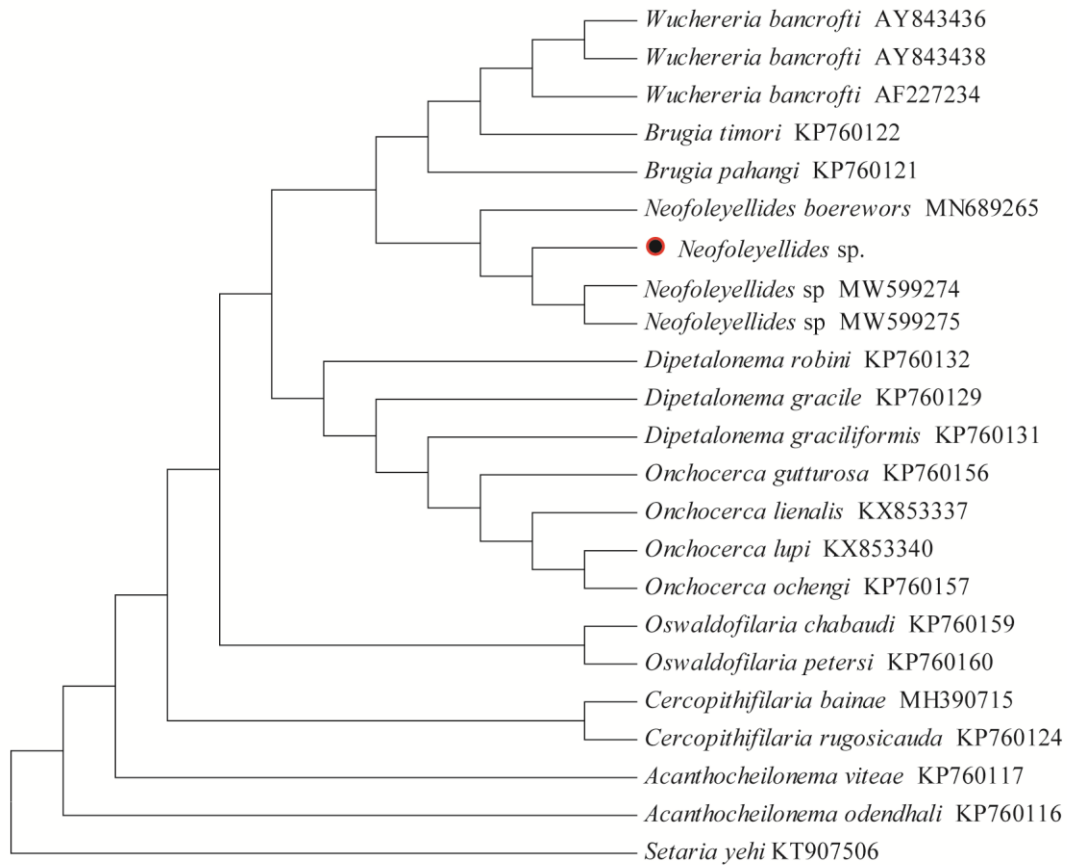


Figure S1. Phylogenetic reconstruction based on the 18S rRNA gene using the maximum likelihood method with *Setaria yehi* as the outgroup. The species sequenced in this study are marked with a red circle.

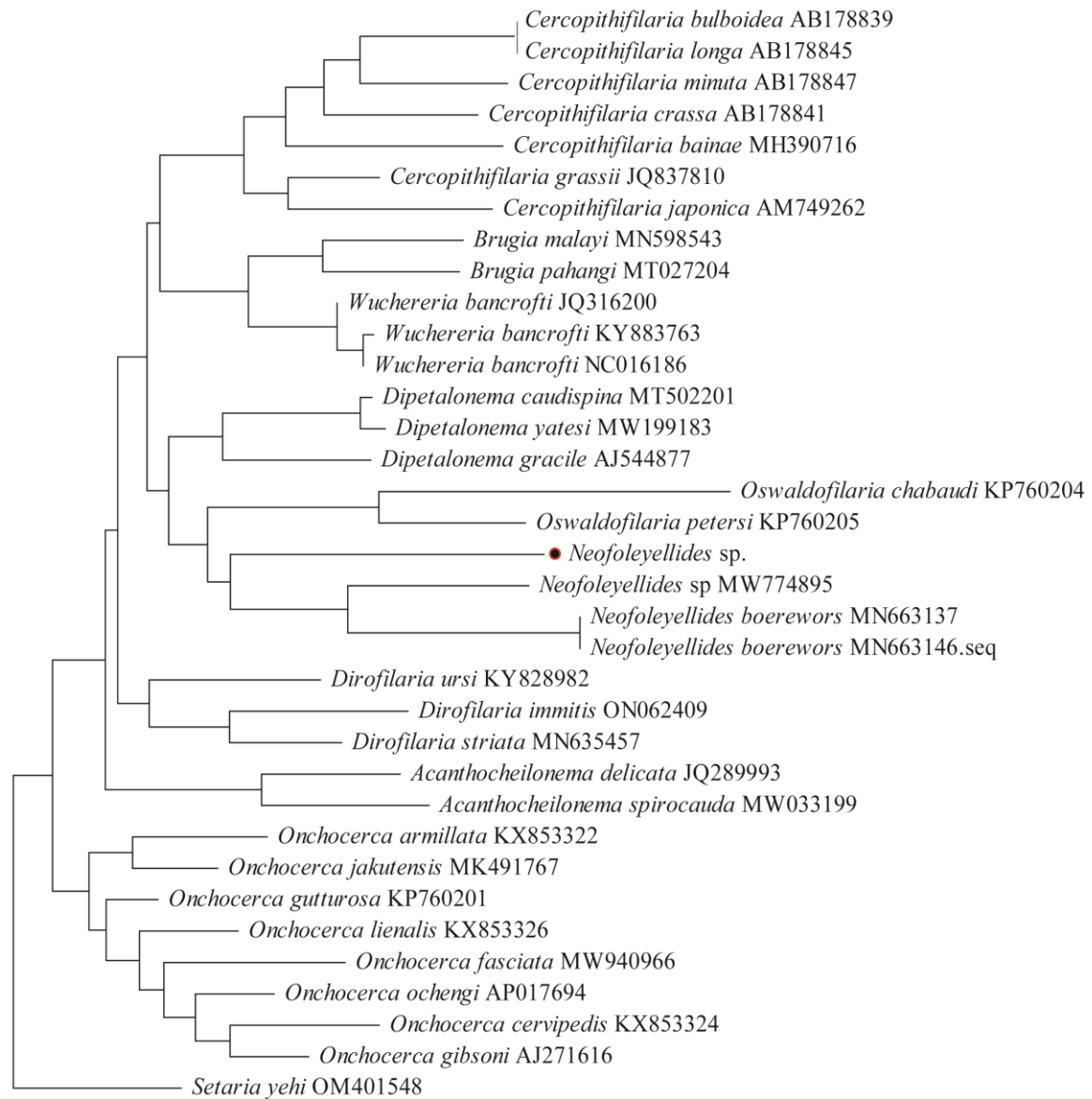


Figure S2. Phylogenetic reconstruction based on the *cox1* gene using the maximum likelihood method with *Setaria yehi* as the outgroup. The species sequenced in this study are marked with a red circle.