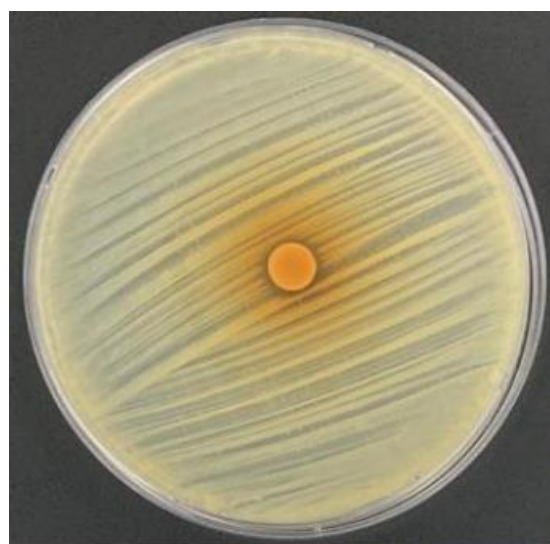
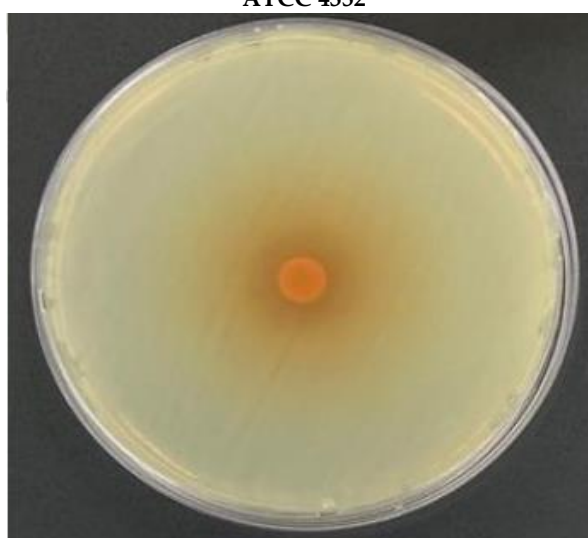


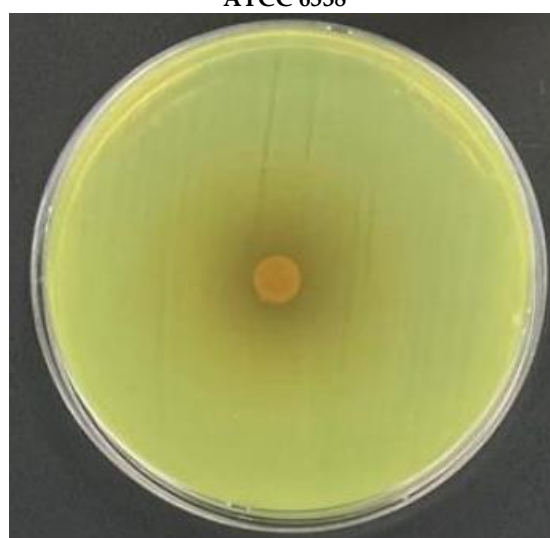
ATCC 4352



ATCC 6538



ATCC 8739



ATCC 10145

Figure S1. Antibacterial activities of Olive leaves against Gram-positive and negative bacteria.
Gram-positive bacteria: a: *Staphylococcus aureus* (ATCC 6538)
Gram-negative bacteria: b: *Escherichia coli* (ATCC 8739), c: *Klebsiella pneumoniae* (ATCC 4352), d: *Pseudomonas aeruginosa* (ATCC 10145)