

**Figure S1.** Mean weekly meteorological data during kharif season of 2018.

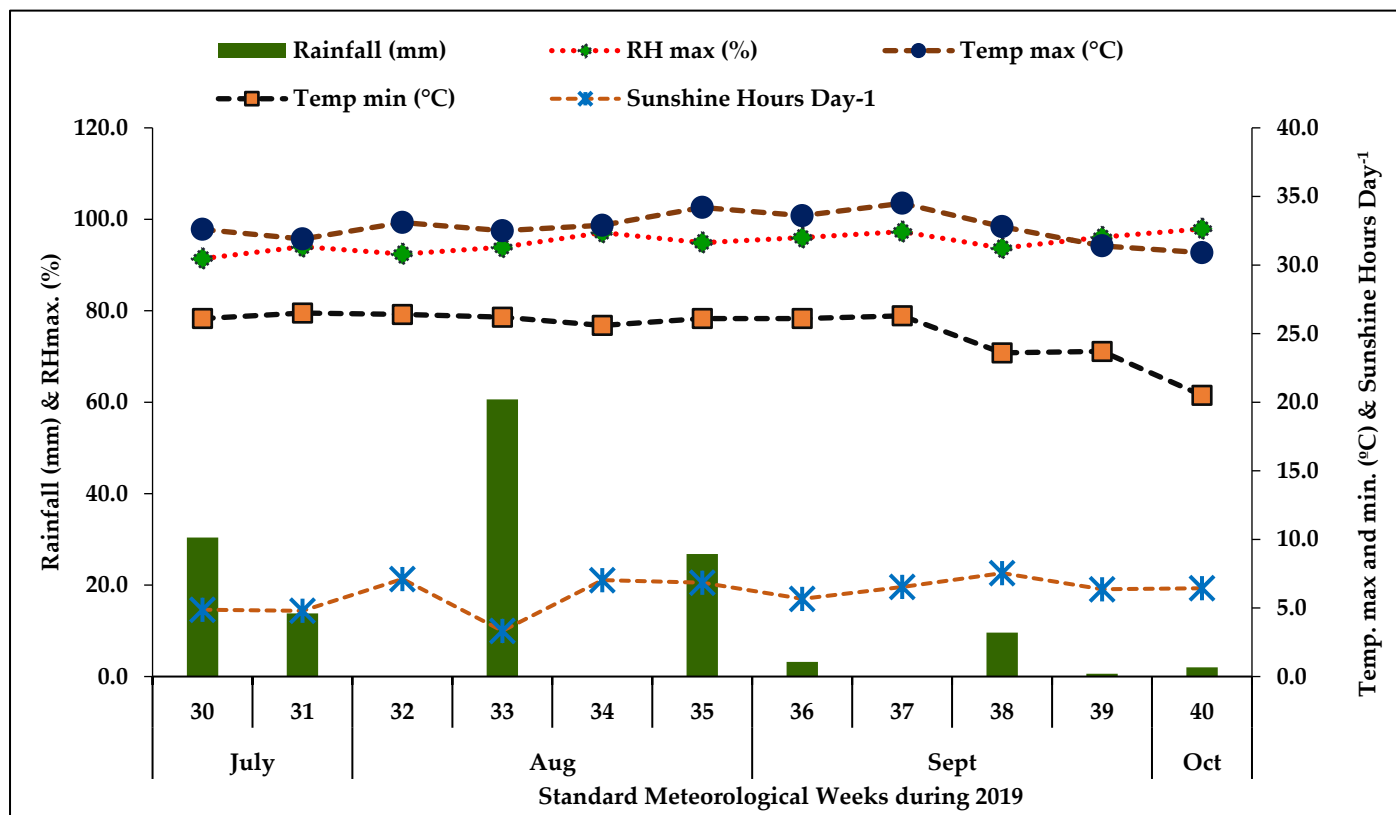


Figure S2. Mean weekly meteorological data during kharif season of 2019.

**Table S1.** Chemical characteristics of FYM used in the experimentation.

Parameters	2018-19	2019-20
pH <sub>1:5</sub>	8.25 ± 0.01	8.31 ± 0.01
EC <sub>1:5</sub> (dS m <sup>-1</sup> )	3.40 ± 0.08	3.36 ± 0.12
Oxidizable OC (%)	11.25 ± 0.09	11.72 ± 0.07
Total carbon (%)	20.78 ± 0.28	20.85 ± 0.19
Total N (%)	0.62 ± 0.07	0.69 ± 0.08
Total P (%)	0.45 ± 0.01	0.46 ± 0.02
Total K (%)	0.82 ± 0.02	0.85 ± 0.03
Ca (g kg <sup>-1</sup> )	27.35 ± 0.15	27.57 ± 0.13
Mg (g kg <sup>-1</sup> )	11.79 ± 0.34	12.02 ± 0.42
Fe (g kg <sup>-1</sup> )	3.21 ± 0.02	3.28 ± 0.03
Zn (mg kg <sup>-1</sup> )	205.3 ± 8.34	221.4 ± 10.24
Mn (mg kg <sup>-1</sup> )	323.0 ± 6.05	332.7 ± 6.38
Cu (mg kg <sup>-1</sup> )	52.6 ± 1.35	57.3 ± 1.51

**Table S2.** Chemical and microbial characteristics of panchagavya used in the experimentation.

Parameters	2018-19	2019-20
<b>A) Physico-chemical properties</b>		
EC <sub>1:5</sub> (dS m <sup>-1</sup> )	6.14 ± 0.06	6.21 ± 0.05
pH <sub>1:5</sub>	4.35 ± 0.04	4.28 ± 0.05
Total N (%)	0.64 ± 0.01	0.65 ± 0.02
Total P (%)	0.10 ± 0.01	0.10 ± 0.01
Total K (%)	0.47 ± 0.03	0.46 ± 0.02
Ca (mg kg <sup>-1</sup> )	121 ± 4.85	127 ± 5.95
Mg (mg kg <sup>-1</sup> )	42 ± 2.54	45 ± 2.35
Fe (mg kg <sup>-1</sup> )	8.75 ± 0.12	8.83 ± 0.10
Zn (mg kg <sup>-1</sup> )	1.05 ± 0.02	1.04 ± 0.01
Mn (mg kg <sup>-1</sup> )	1.48 ± 0.02	1.52 ± 0.04
Cu (mg kg <sup>-1</sup> )	0.62 ± 0.01	0.59 ± 0.01
<b>B) Microbial properties</b>		
Total Bacteria (×10 <sup>5</sup> CFU ml <sup>-1</sup> )	38.2 ± 1.45	40.6 ± 2.18
Total Fungi (×10 <sup>3</sup> CFU ml <sup>-1</sup> )	25.6 ± 1.52	26.8 ± 1.05
Total Actinomycetes (×10 <sup>2</sup> CFU ml <sup>-1</sup> )	18.8 ± 1.12	19.0 ± 1.39
Azotobacter (×10 <sup>2</sup> CFU ml <sup>-1</sup> )	7.0 ± 0.65	7.4 ± 0.42
P solubilizers (×10 <sup>2</sup> CFU ml <sup>-1</sup> )	8.2 ± 0.38	8.0 ± 0.56