

Figure S2



Young riddled hazelnuts



Larvae path on blank nut



Riddled by adults and paths from larvae



Marks from adults and/or larvae



Larvae paths on the basal scar



Larvae paths on the basal scar



Larvae paths on the basal scar



Larvae paths on the basal scar



Larvae paths on the basal scar



Larvae paths on the basal scar with dried larvae



Larvae paths on the basal scar with dried larvae



Larvae paths on the basal scar with dried larvae



Larvae paths on the basal scar with dried larvae



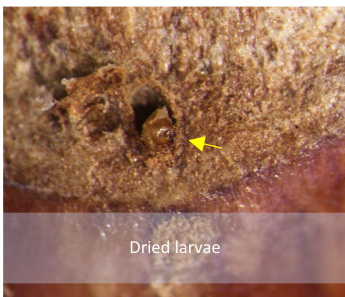
Larvae paths on the basal scar with dried larvae



Larvae paths on the basal scar with dried larvae



Dried larvae



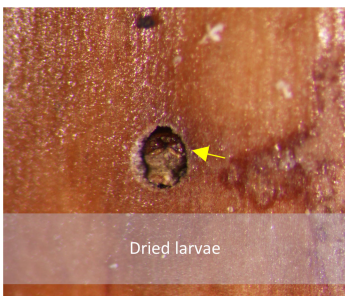
Dried larvae



Larvae paths on the basal scar with dried larvae



Lateral view of larvae paths



Dried larvae



Micropyle was use as point of penetration and exit hole for the larvae