

Supplementary materials

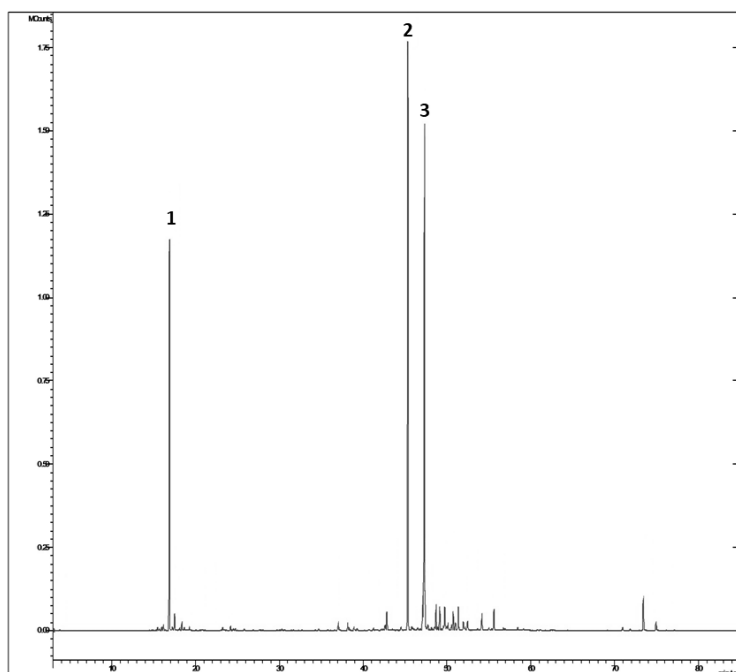


Figure S1. GC-MS chromatogram of the commercial essential oil of hop cones. Main compounds were identified as β -myrcene (1), *trans*-caryophyllene (2), and α -humulene (3).

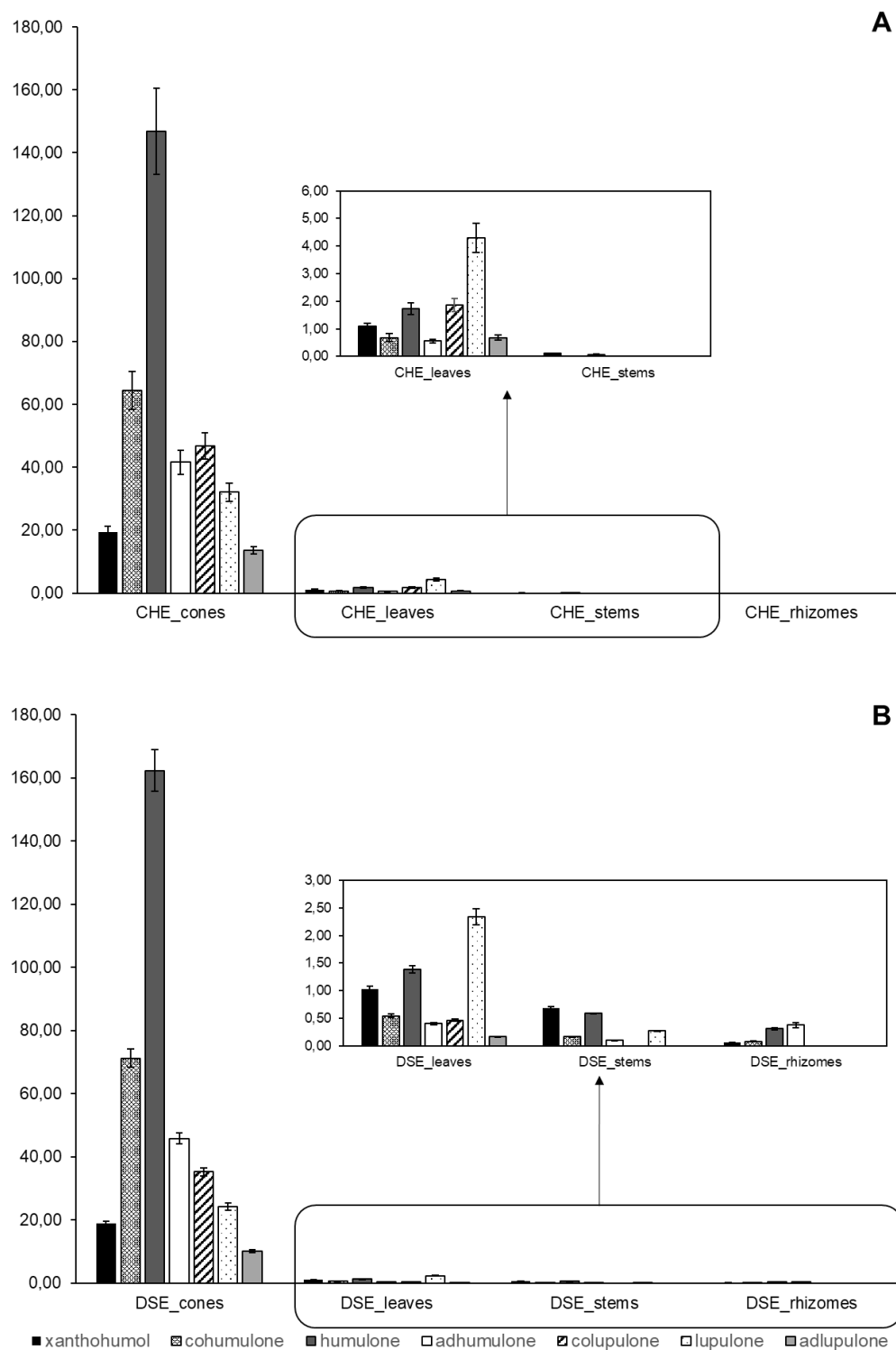


Figure S2. Content (in $\mu\text{g.mg}^{-1}$) of prenylated chalcones and acylphloroglucinols in (A) Crude hydro-ethanolic extracts (CHE) and (B) DCM sub-extracts (DSE) of different hop parts ($n = 3$, mean \pm SD)